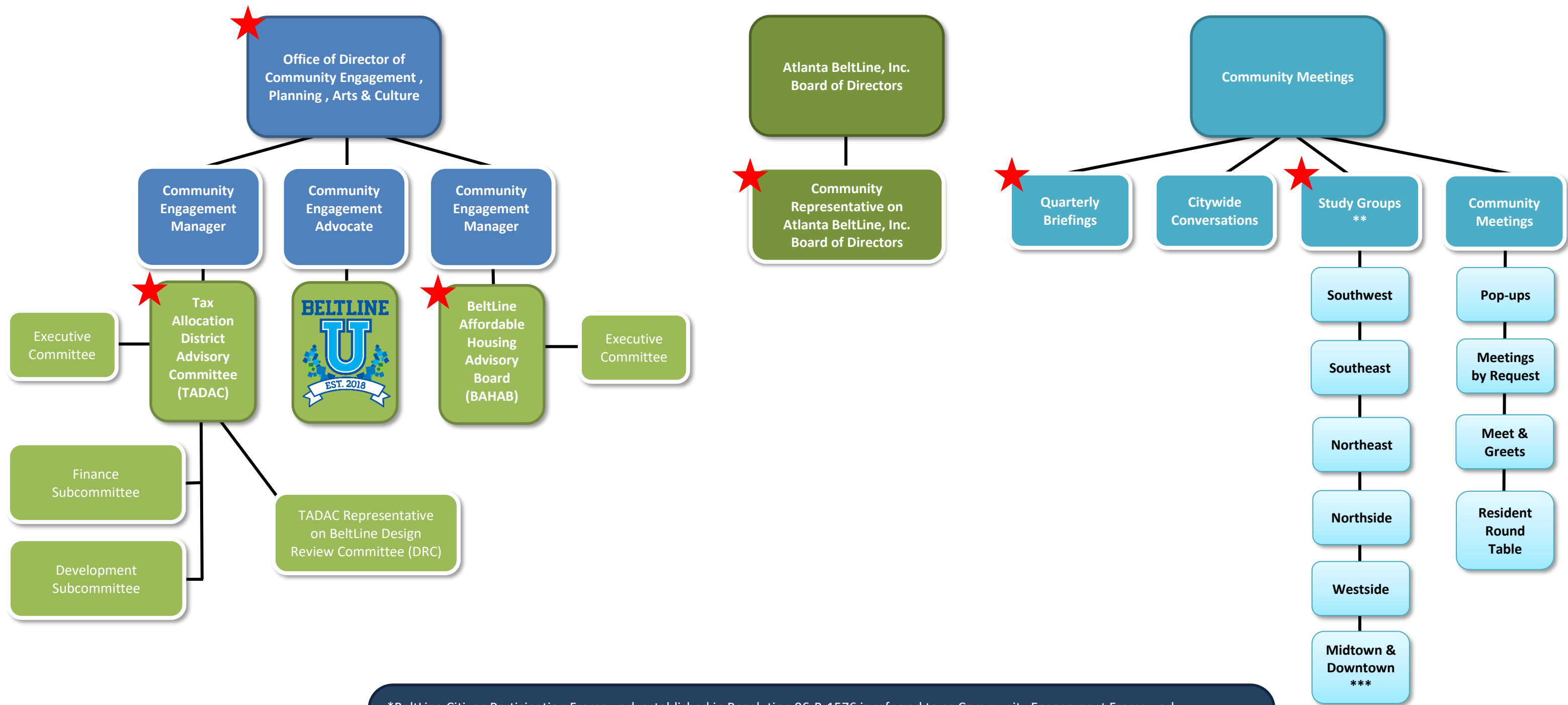


Expanded Atlanta BeltLine Planning & Community Engagement Framework*



*BeltLine Citizen Participation Framework established in Resolution 06-R-1576 is referred to as Community Engagement Framework
 ** Planning Units established in Resolution 06-R-1576 are referred to as Study Groups
 *** Midtown & Downtown Study Groups held as needed for issues related to Crosstown transit routes

★ Red stars indicate community engagement methods that are legislatively mandated and are included in the original "BeltLine Citizen Participation Framework"