



//In Corridor Trail



4 Southwest Corridor Trail



// Southwest Preliminary Design



// Real Estate Acquisition

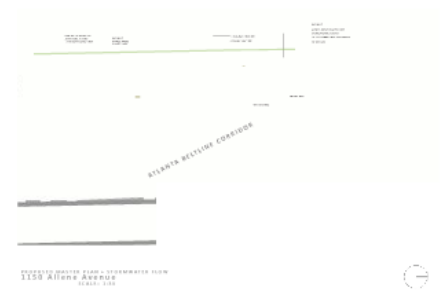
- We may need to acquire some of your property.
- The Constitution of Georgia and the Constitution of the United States provide that private property shall be acquired for public purposes, and:
- That JUST COMPENSATION be paid for all property so acquired.
- We will contact you well in advance of actual negotiations if your property is needed.

Atlanta Office in Redwood and West Peachtree
Acquisition Process Act of 1976 (the Uniform Act)



//Q&A

// Allene Avenue Urban Agriculture Site





// Atlanta BeltLine Citywide Conversation

// October 3, 2013

//Agenda

I. Welcome

II. Atlanta BeltLine Overview

III. In Corridor Trail

IV. Southwest Corridor Trail Project

- Progress To Date
- TIGER Grant Funding

V. Ongoing Studies

- Environmental Review
- Design
- ROW Needs

VI. Q&A

// Atlanta BeltLine Overview

//Where is the Atlanta BeltLine?

- In the heart of the Atlanta region
- Connects many of Atlanta's cultural destinations
- Utilizes historic freight rail rights of way around the center of town





//What IS the Atlanta BeltLine?

- Connects 45 neighborhoods
- 6,500 acre redevelopment area
- 22% of City of Atlanta population lives in the Atlanta BeltLine planning area
- 8% of the City's land mass is inside the Atlanta BeltLine TAD
- 40% increase in Atlanta's parkland
- 46 miles of streetscape improvements

Overview

These are the key elements that will be developed over the life of the Atlanta BeltLine Program

22 Miles of pedestrian friendly light rail transit

33 Miles of multi-use trails

1,300 Acres of Parks

5,600 Units of Affordable Housing

1,100 Acres of Brownfields remediated

Public Art

Historic Preservation



// The Atlanta BeltLine: Key Elements



Parks and Arboretum



Trails



Transit &
Transportation
Infrastructure



Jobs & Economic
Development



Affordable Workforce
Housing



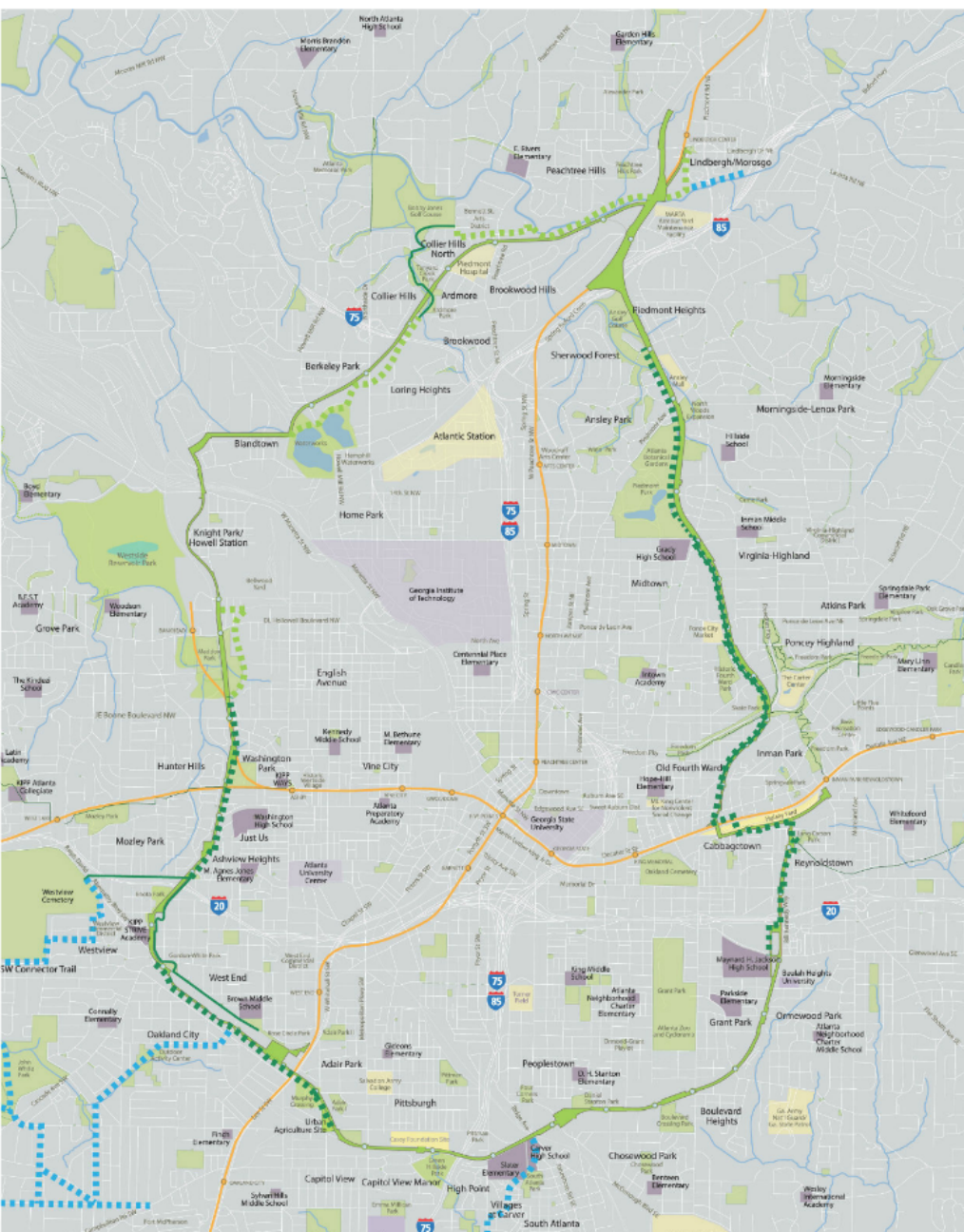
Streetscapes &
Public Art



Historic Preservation



Environmental
Clean-up



// An Opportunity for Significant Impact



D. H. Stanton Park

- 150 Bayview Ave. SE, Atlanta, GA 30315
- Re-developed vacant structure & acres available for public use
- First emergency medical park in the City of Atlanta
- Amenity include a little league baseball diamond along with large multi-use athletic fields
- New playground with subsoil and a commissioned public work of art by Robert Roberg



Boulevard Crossing

104 Highland Ave. SE, Atlanta, GA 30315-2102

Park opened in Fall of 2010

- Five acres of new green space
- More than 20 acres of land initially required for the park by Trust for Future Land
- Excess-sitting equals an idea to bring over-owners through partnership with Trees Atlanta
- Solar lamps installed to conserve energy
- Organic landscaping techniques employed to reduce maintenance costs
- More park space planned to connect the north and south boundaries of the corridor



Historic Fourth Ward Park

680 Dallas Street, Atlanta, GA 30308

17 new acres of green space

- 3-acre lake provides a beautiful, natural gathering place while also serving as a storm water detention basin
- Open, positive lawn
- Modern playground
- Splashpad
- Outdoor amphitheater



Historic Fourth Ward Park Skate Park

830 Wiloughby Way NE, Atlanta, GA 30312

Atlanta's first public skatepark

- Tony Hawk Foundation contributed \$25,000 towards the skatepark construction
- Large, multi-use athletic field + play ground
- Solar photovoltaic panels offset roughly 50 percent of the park's energy costs
- Underground cistern for all non-potable water
- Quick access to the Eastside Trail

Trails



West End Trail

West End Trail is a 1.5-mile trail in the West End neighborhood.



Tanyard Creek Trail

Tanyard Creek Trail is a 1.5-mile trail in the Tanyard Creek neighborhood.



Southwest Connector

Southwest Connector is a 1.5-mile trail in the Southwest neighborhood.



Eastside Trail

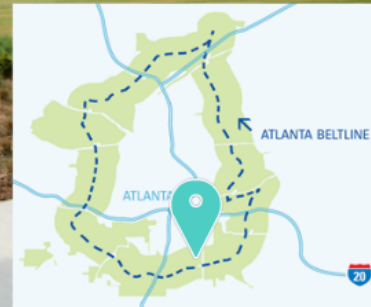
Eastside Trail is a 1.5-mile trail in the Eastside neighborhood.



D. H. Stanton Park

150 Boynton Ave. SE, Atlanta, GA, 30315

- Reclaimed space features 8 acres available for public use
- First energy-cost neutral park in the City of Atlanta
- Amenities include a little league baseball diamond along with large, multi-use athletic fields
- New playground with splashpad and a commissioned public work of art by Robert Witherspoon





Boulevard Crossing

504 Englewood Ave. SE, Atlanta, GA, 30315-2502

- Park opened in Fall of 2011
- Five acres of new greenspace
- More than 20 acres of land initially acquired for the park by Trust for Public Land
- Kudzu-eating goats on site to limit overgrowth through partnership with Trees Atlanta
- Solar lamps installed to conserve energy
- Organic landscaping techniques employed to reduce maintenance costs
- More park space planned to connect the north and south boundaries of the corridor

The 17-acre Historic Fourth Ward Park with its two-acre lake is the result of years of collaboration by the city, the community, businesses and nonprofits. Atlanta Mayor Kasim Reed officially dedicated this park on June 18, 2011.



Historic Fourth Ward Park

680 Dallas Street, Atlanta, GA 30308

17 new acres of greenspace

2-acre lake provides a beautiful natural gathering place while also serving as a storm water detention basin

- Open, passive lawns
- Modern playground
- Splashpad
- Outdoor amphitheater





Historic Fourth Ward Park Skate Park

830 Willoughby Way NE, Atlanta, GA 30312

- Atlanta's first public skatepark
- Tony Hawk Foundation contributed \$25,000 towards the skatepark construction
- Large, multi-use athletic field + play ground
- Solar photovoltaic panels offset roughly 50 percent of the park's energy costs
- Underground cistern for all non-potable water
- Quick access to the Eastside Trail



2-acre lake provides a beautiful natural gathering place while also serving as a storm water detention basin

- Open, passive lawns
- Modern playground
- Splashpad
- Outdoor amphitheater



- Large, multi-use athletic field + play ground
- Solar photovoltaic panels offset roughly 50 percent of the park's energy costs
- Underground cistern for all non-potable water
- Quick access to the Eastside Trail

Trails

2017



West End Trail

Westview Drive south of I-20 to West Marietta Street



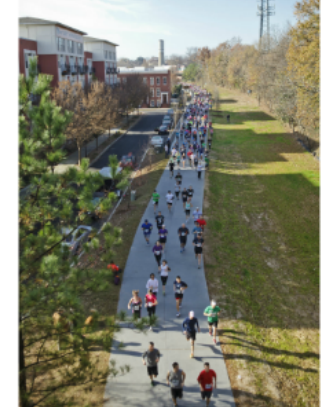
Tanyard Creek Trail

Colonial Homes Drive to Ardmore Park



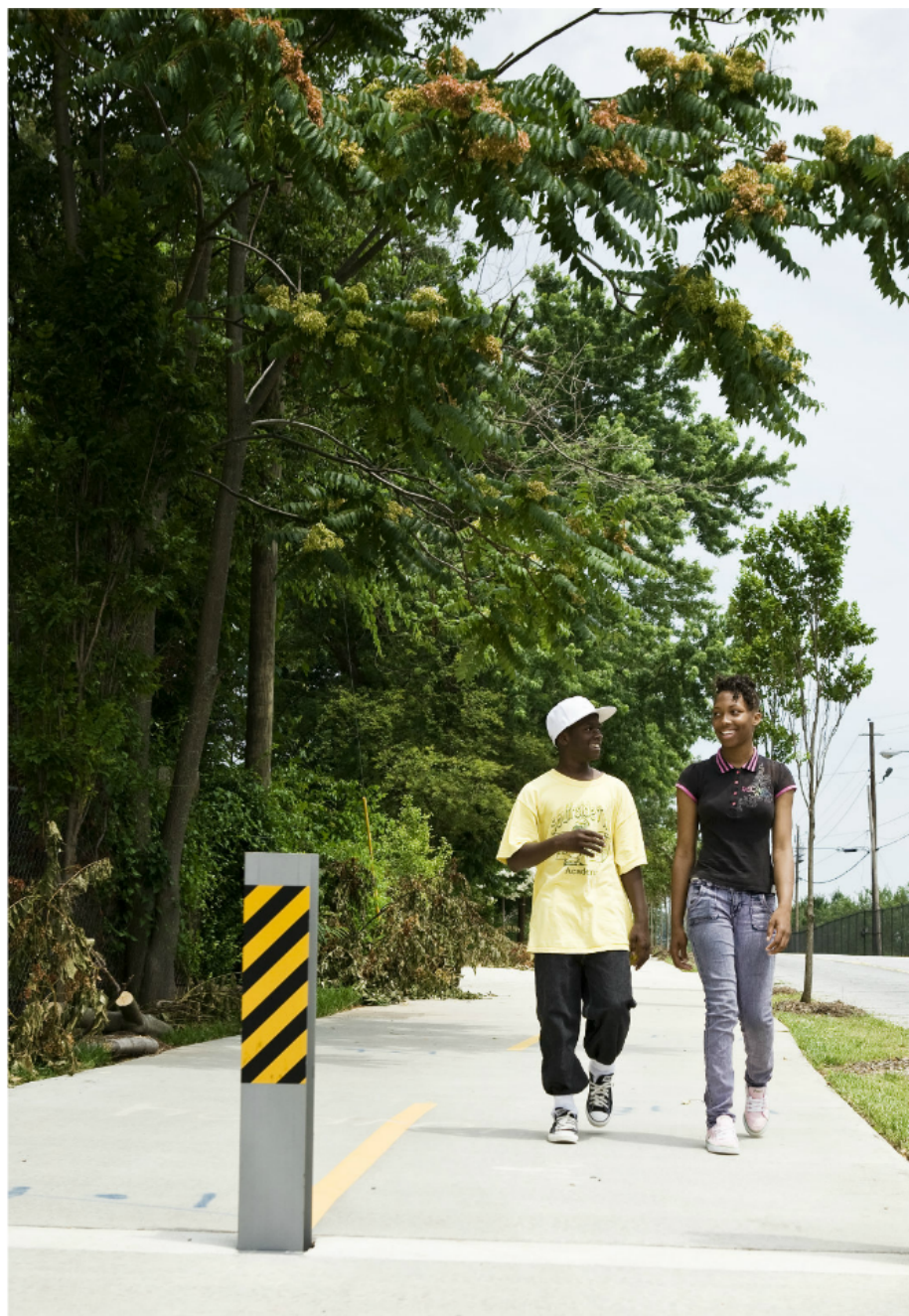
Southwest Connector

2257 Bollingbrook Drive Atlanta, GA 30311
Connects the Lionel Hampton Trail to Westwood Ave.



Eastside Trail

Irwin Street to the intersection on 10th Street and Monroe Drive



West End Trail

Westview Drive south of I-20 to West Marietta Street



Tanyard Cr

Colonial Homes Drive to Ardm



Tanyard Creek Trail

Colonial Homes Drive to Ardmore Park



Southwest Connector

2257 Bollingbrook Drive Atlanta, GA 30311

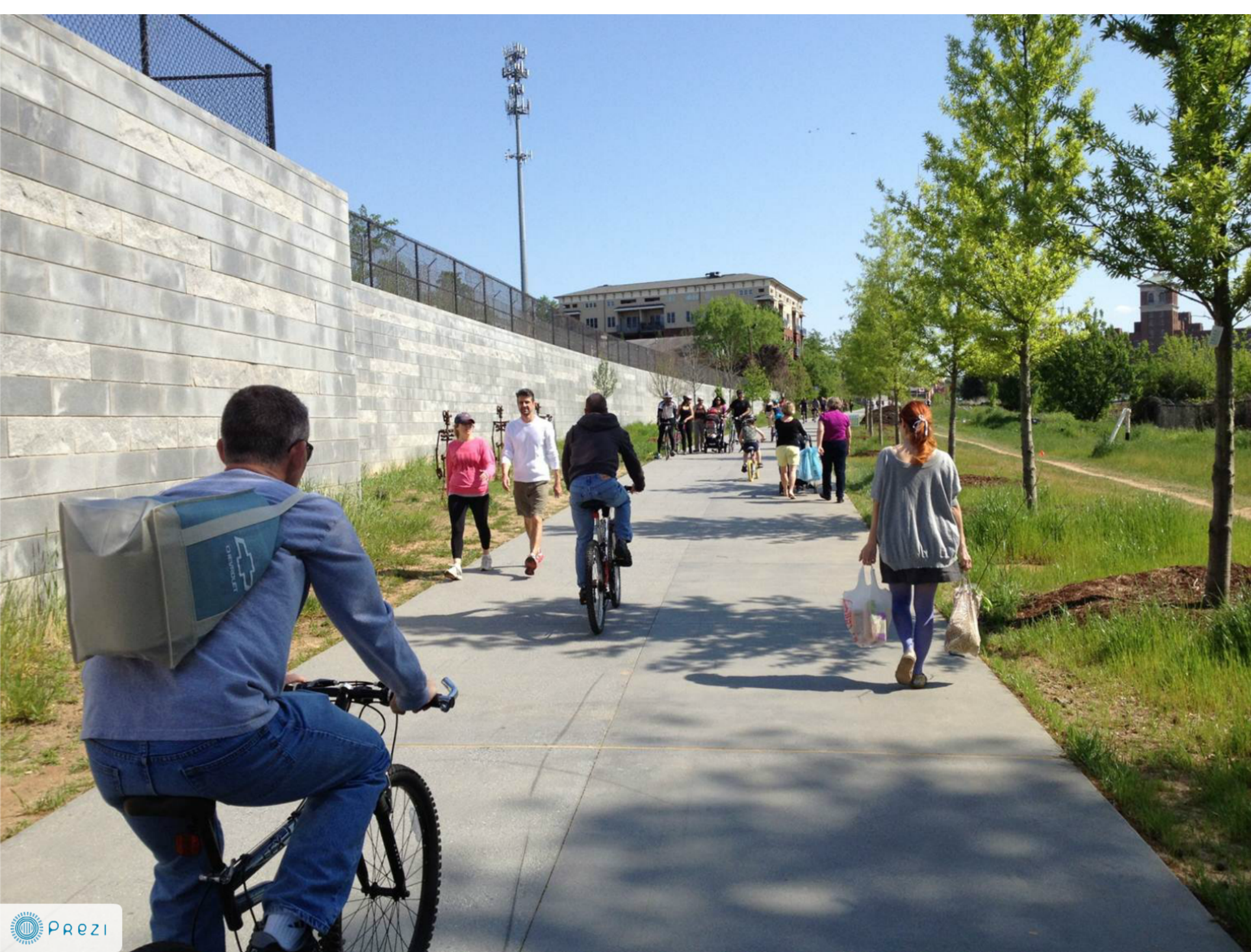
 Perez Connects the Lionel Hampton Trail to Westwood Ave.



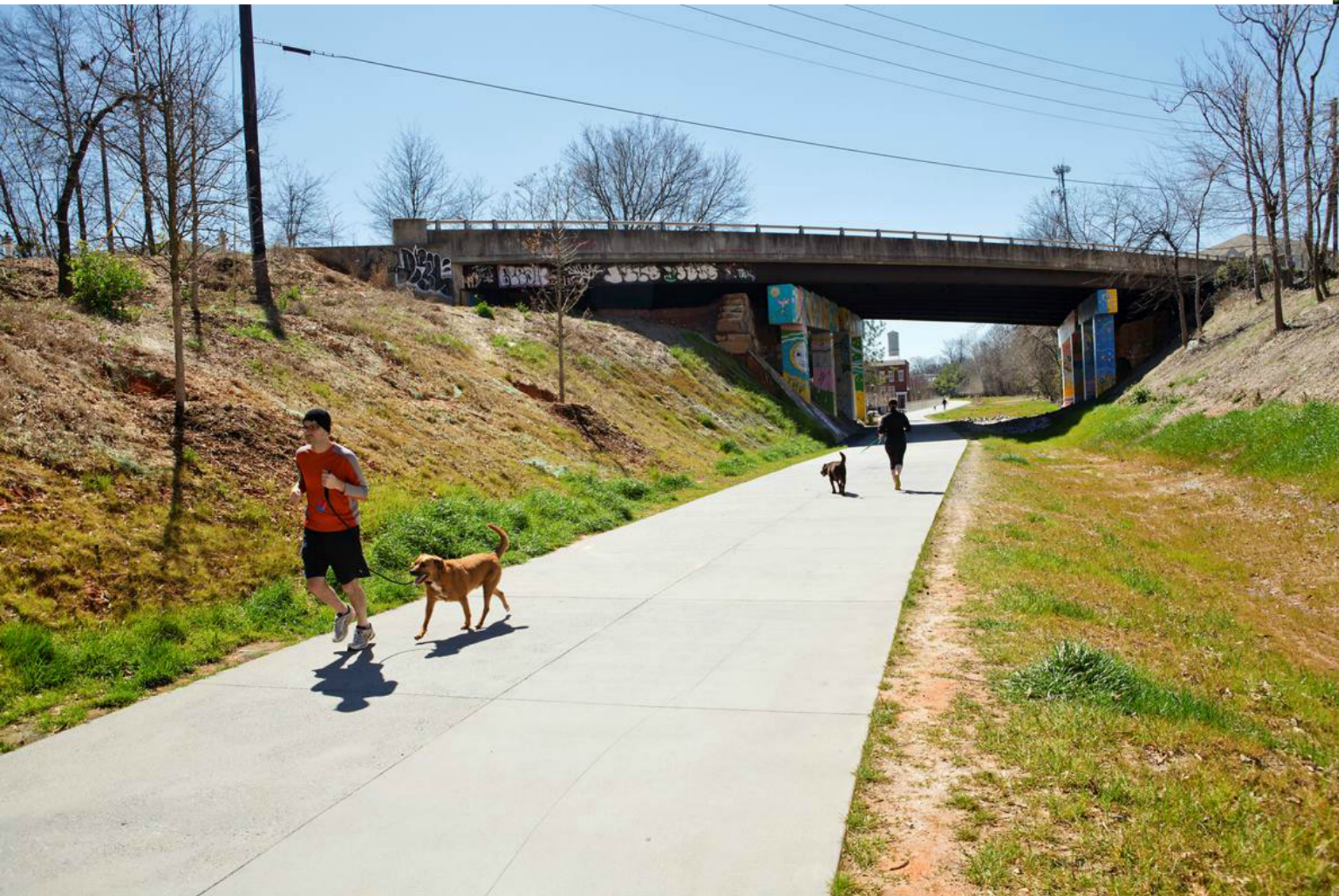
Eastside Trail

Irwin Street to the intersection on 10th Street and Monroe Drive

//In Corridor Trail









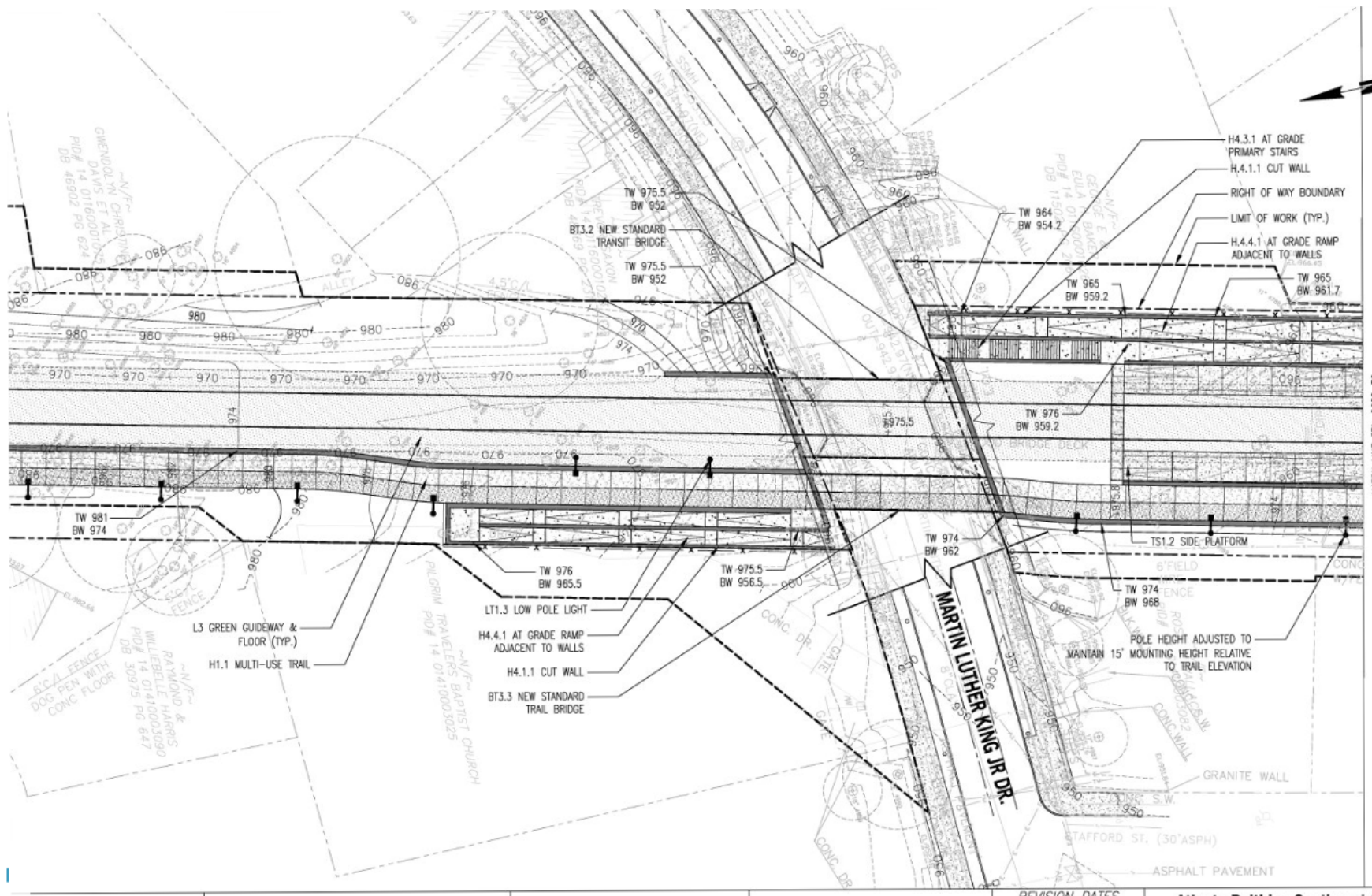




// Southwest Corridor Trail Project

//Progress to Date

April 2013 - SW Study Group Presentation of SW Corridor Design (See Wall)



// Southwest Preliminary Design



// Awarded TIGER V Grant

Provides \$18 million towards the total \$43 million needed for Southwest Atlanta BeltLine Corridor Trail cost

2.5 miles of multi-use trails within the Atlanta BeltLine corridor

16 accessible points of entry

Safe routes and connections to four local schools

Connections from neighborhoods to four parks

Will include trail lighting and cameras



40% increase in Atlanta's parkland

//Ongoing Studies

Environmental & Engineering Studies Began to Determine

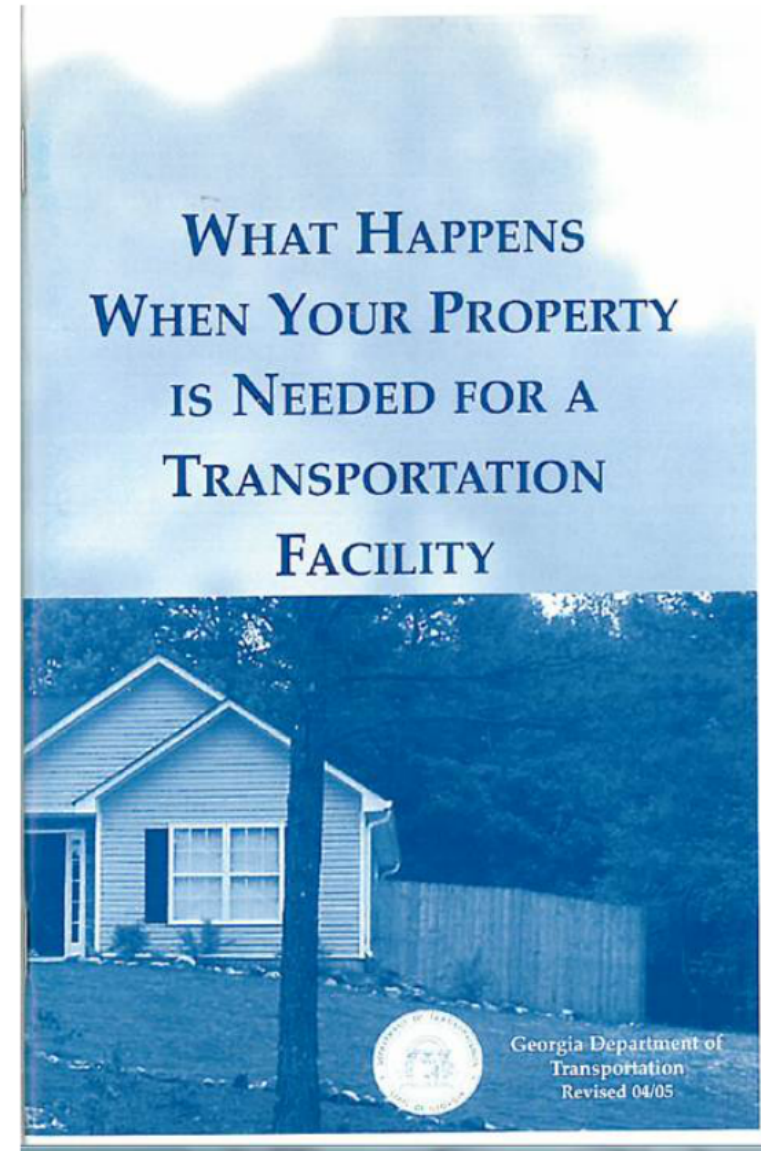
- Engineering parameters
- ROW Needs
- Environmental Impacts
- Advance Design
- Community Engagement Planning



// Real Estate Acquisition

- We may need to acquire some of your property.
- The Constitution of Georgia and the Constitution of the United States provide that private property may be acquired for public purposes, and,
- That JUST COMPENSATION be paid for all property so acquired.
- We will contact you well in advance of actual negotiations if your property is needed.

Reference: Uniform Relocation and Real Property Acquisition Policies Act of 1970 (The Uniform Act)



//Q&A