

Southside Corridor Design

September 13, 2016



@atlantabeltline



@atlantabeltline



@atlantabeltline



Atlanta
BeltLine®

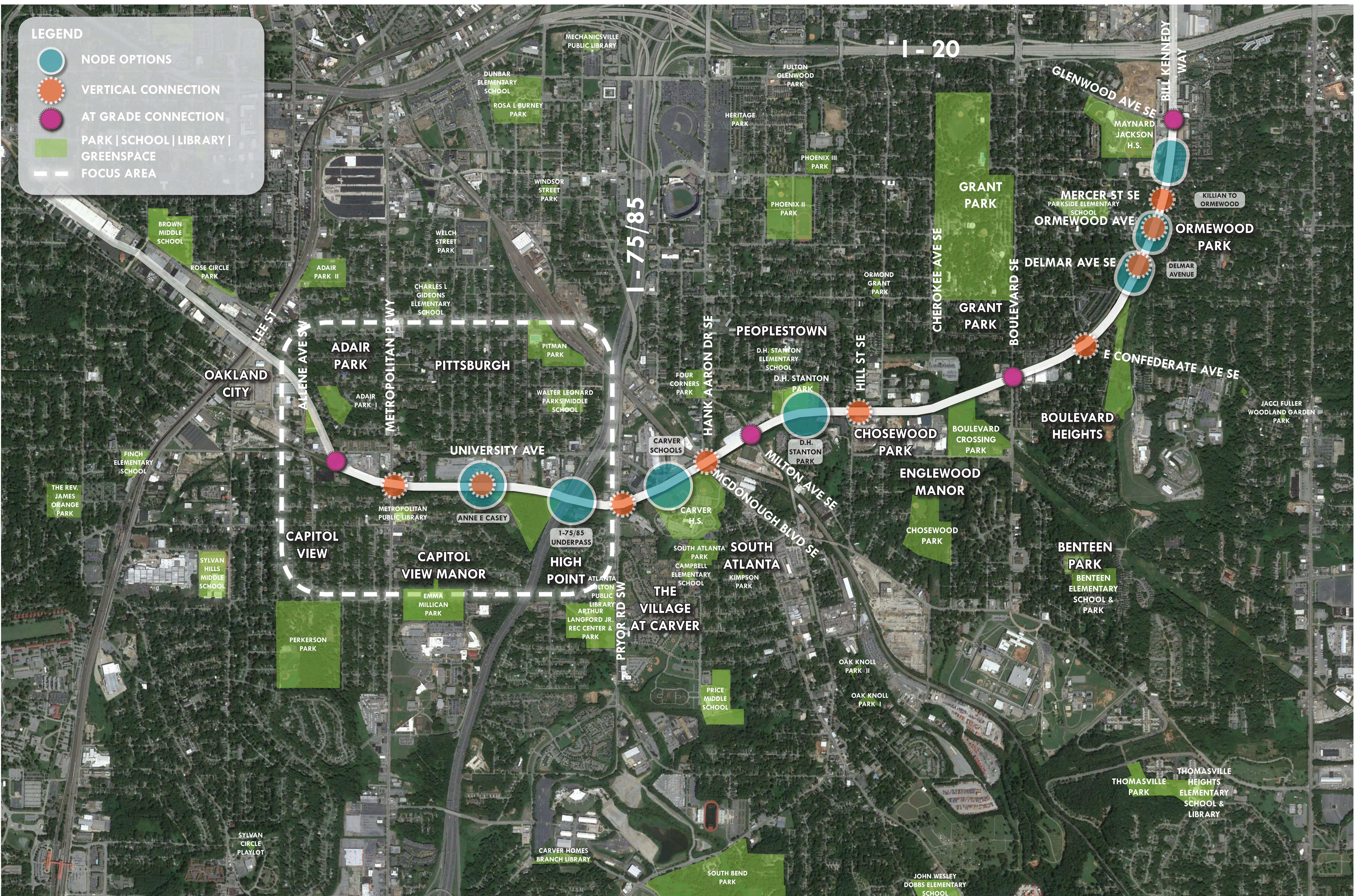


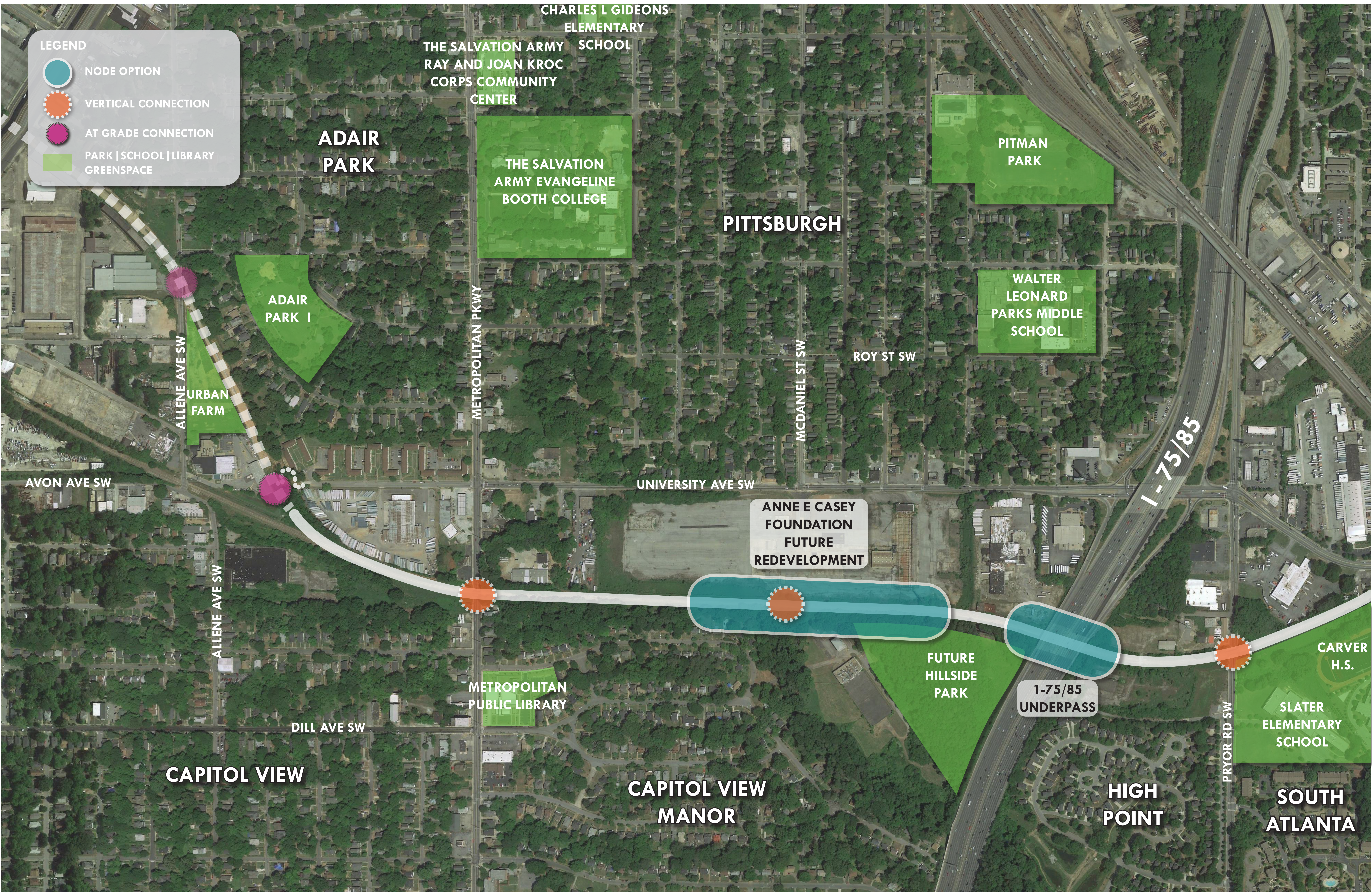
Southside Trail



- Includes 4-mile trail between University Ave & Glenwood Ave
- Design to include lighting, retaining walls, vertical connections, storm drainage, signage/wayfinding, and bridges
- Federally Funded Project, following GDOT Design Process
- Design to be complete in 18-24 months followed by construction
- Design and Community Outreach began in Summer 2016









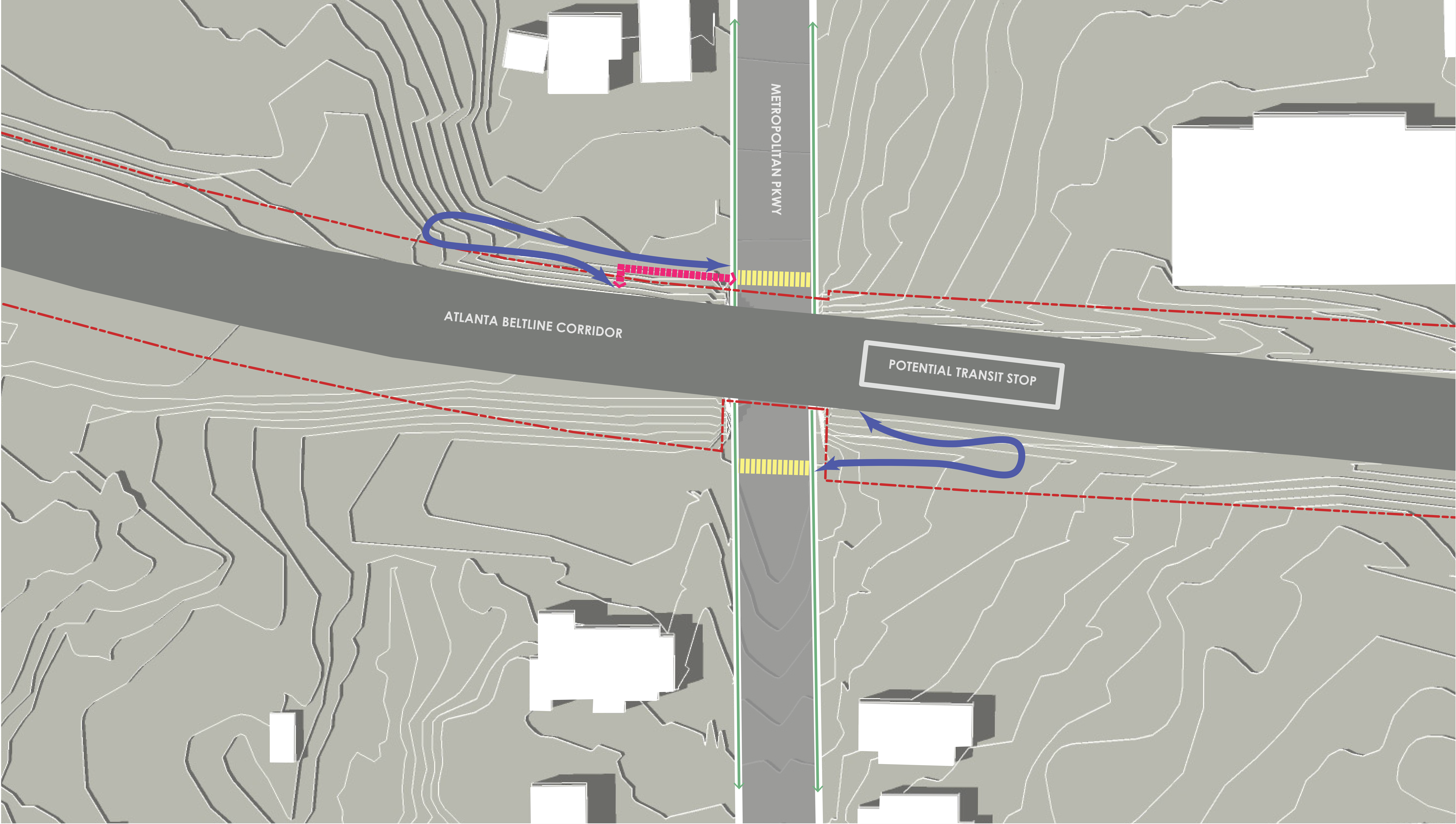




LEGEND

- BIKING - DEDICATED LANES
- BIKING - GOOGLE MAP CYCLE ROUTES
- BIKING - PLANNED FUTURE IMPROVEMENT
- PUBLIC TRANSIT - BUS
- BUS STOP
- FUTURE STREET CAR
- MARTA RAIL
- VERTICAL CONNECTION OPPORTUNITY
- AT GRADE ACCESS OPPORTUNITY
- PLANNED ROAD CONNECTION





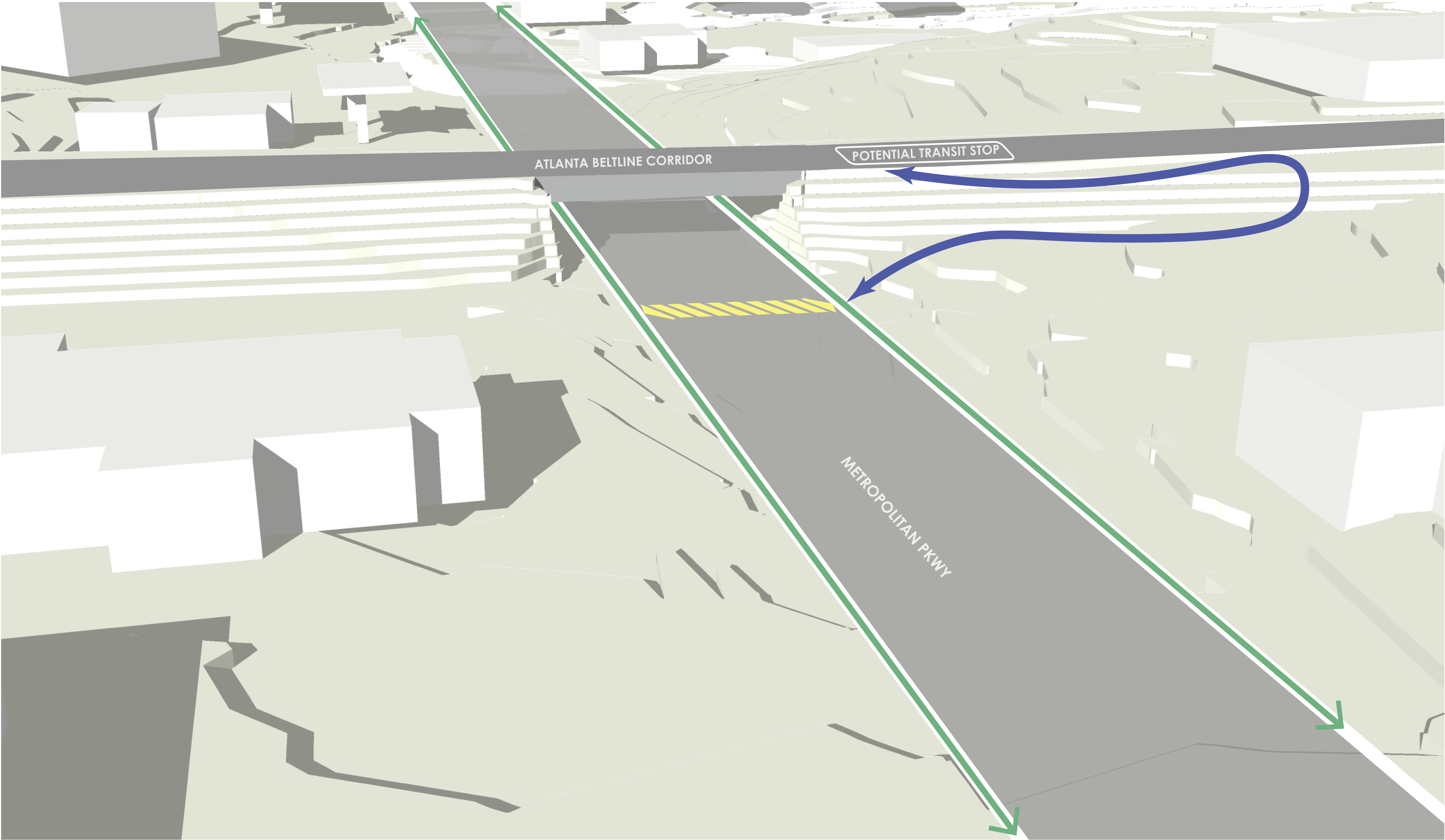
- STREET LEVEL SIDEWALK
- STAIRS
- ACCESSIBLE RAMP
- ACCESS POINT
- RIGHT OF WAY



SOUTHSIDE TRAIL
METROPOLITAN VERTICAL ACCESS PLAN VIEW

SEPTEMBER 2016



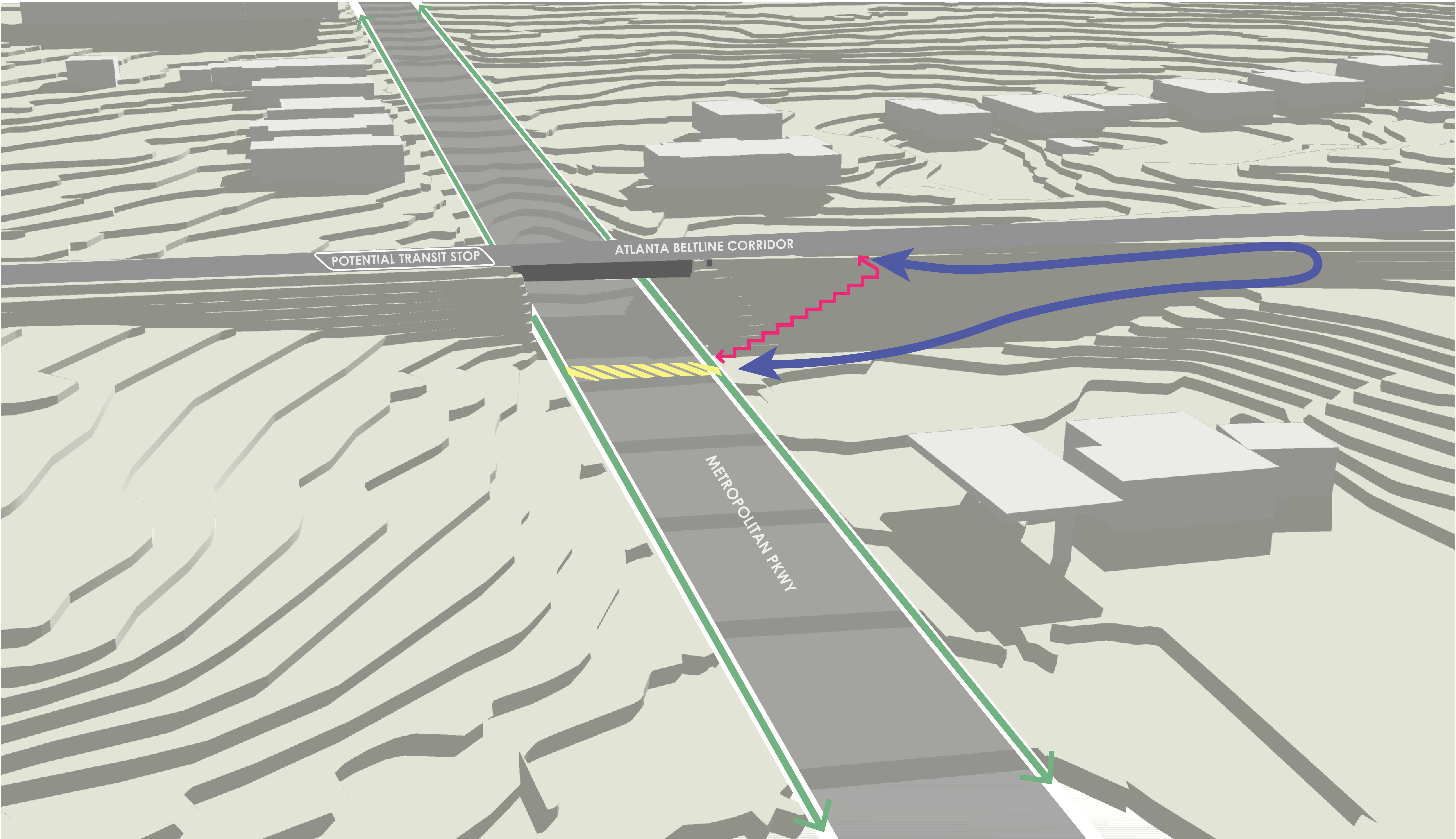


- STREET LEVEL SIDEWALK
- ACCESSIBLE RAMP
- ACCESS POINT



SOUTHSIDE TRAIL
METROPOLITAN VERTICAL ACCESS PERSPECTIVE LOOKING NORTH
SEPTEMBER 2016





- STREET LEVEL SIDEWALK
- STAIRS
- ACCESSIBLE RAMP

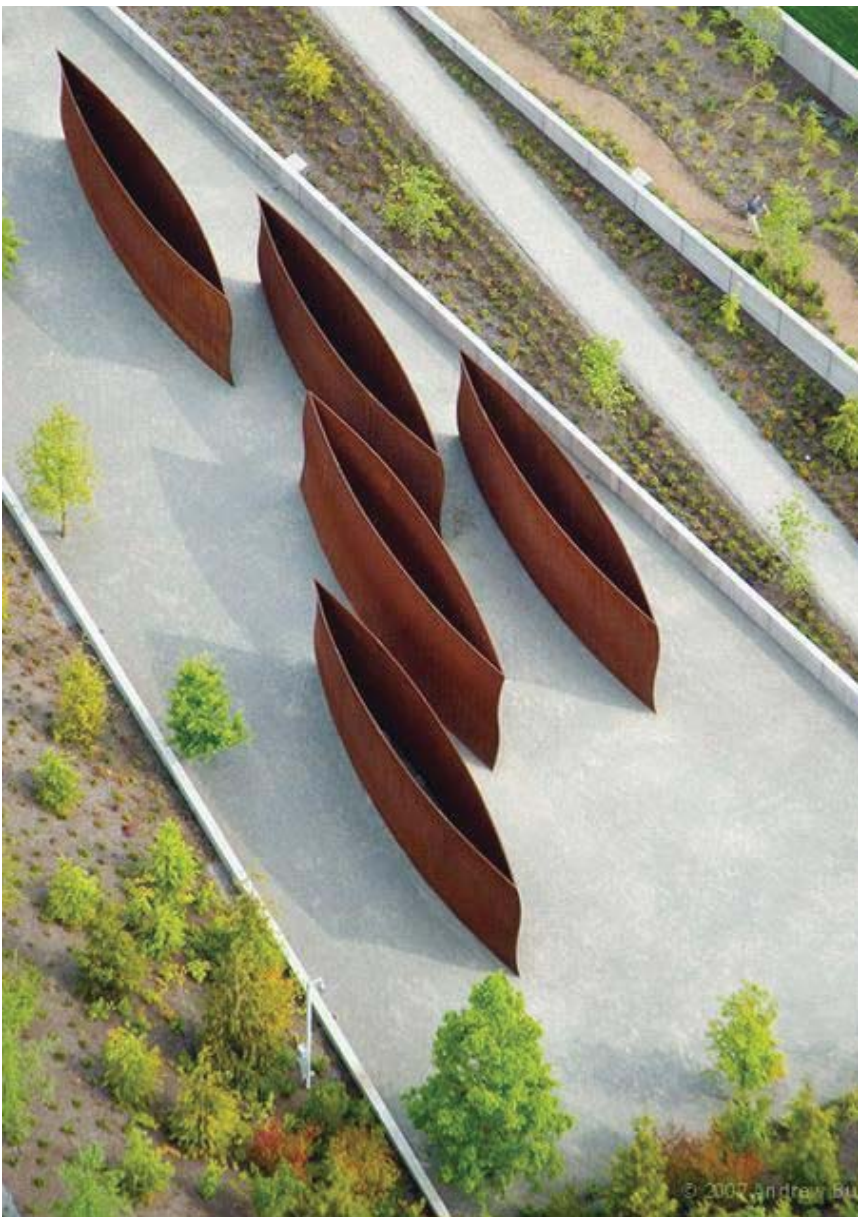
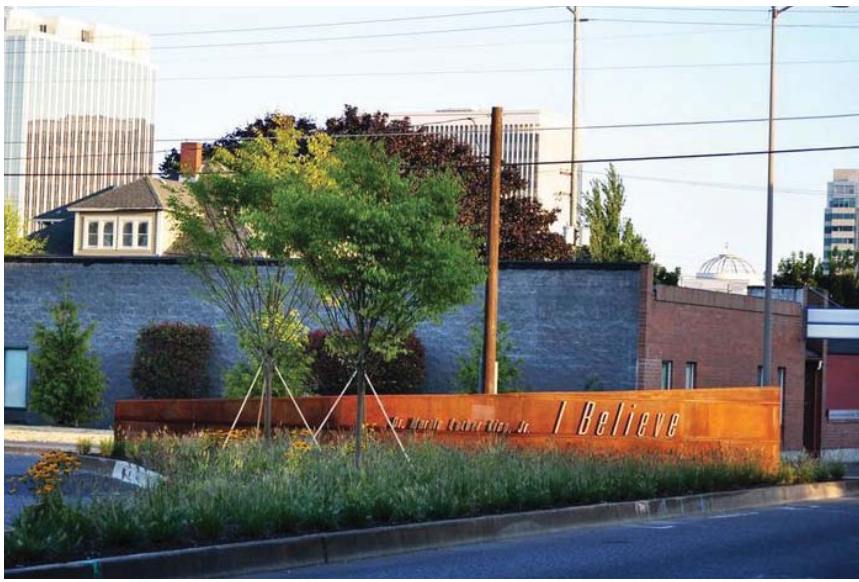
NODE

A place of special **INTERPRETIVE**, **CULTURAL**, or **NATURAL SIGNIFICANCE**

A **FOCAL POINT** for nearby communities or commerce - **A MEETING PLACE**

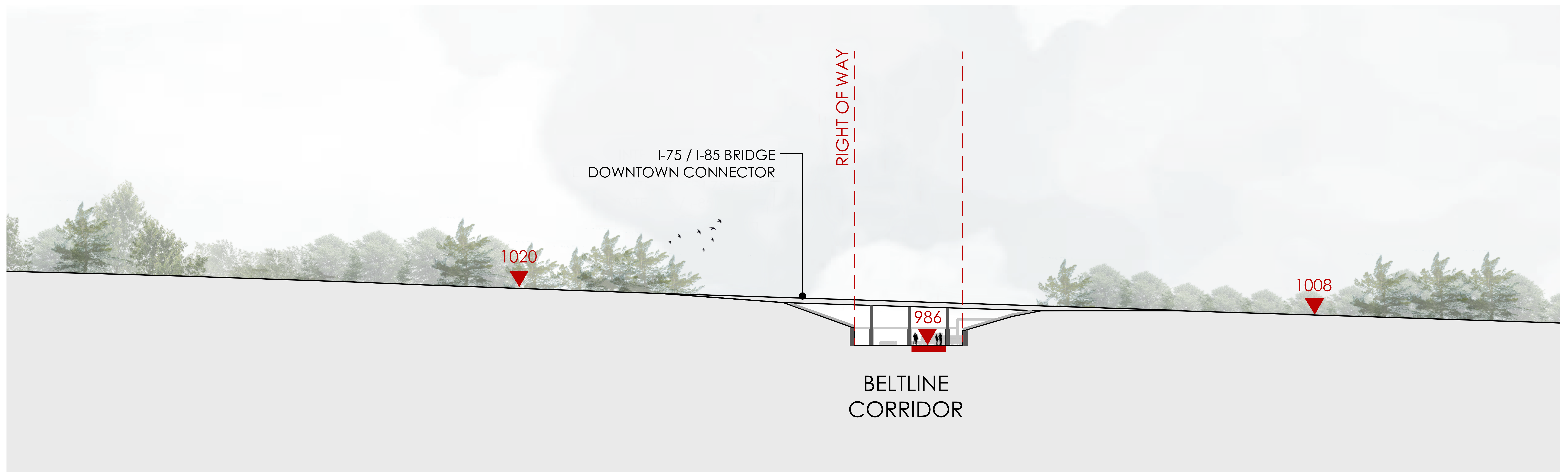
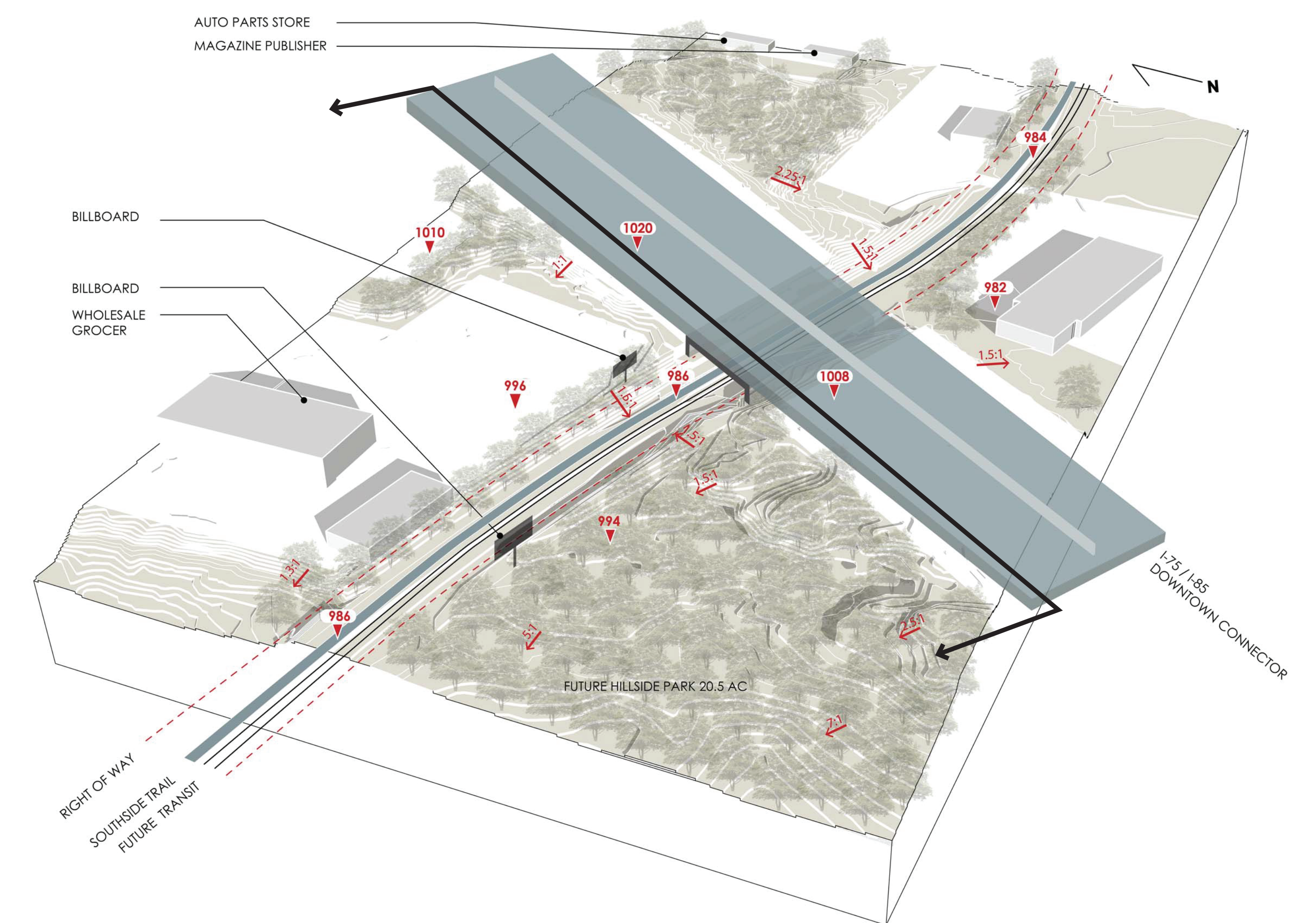
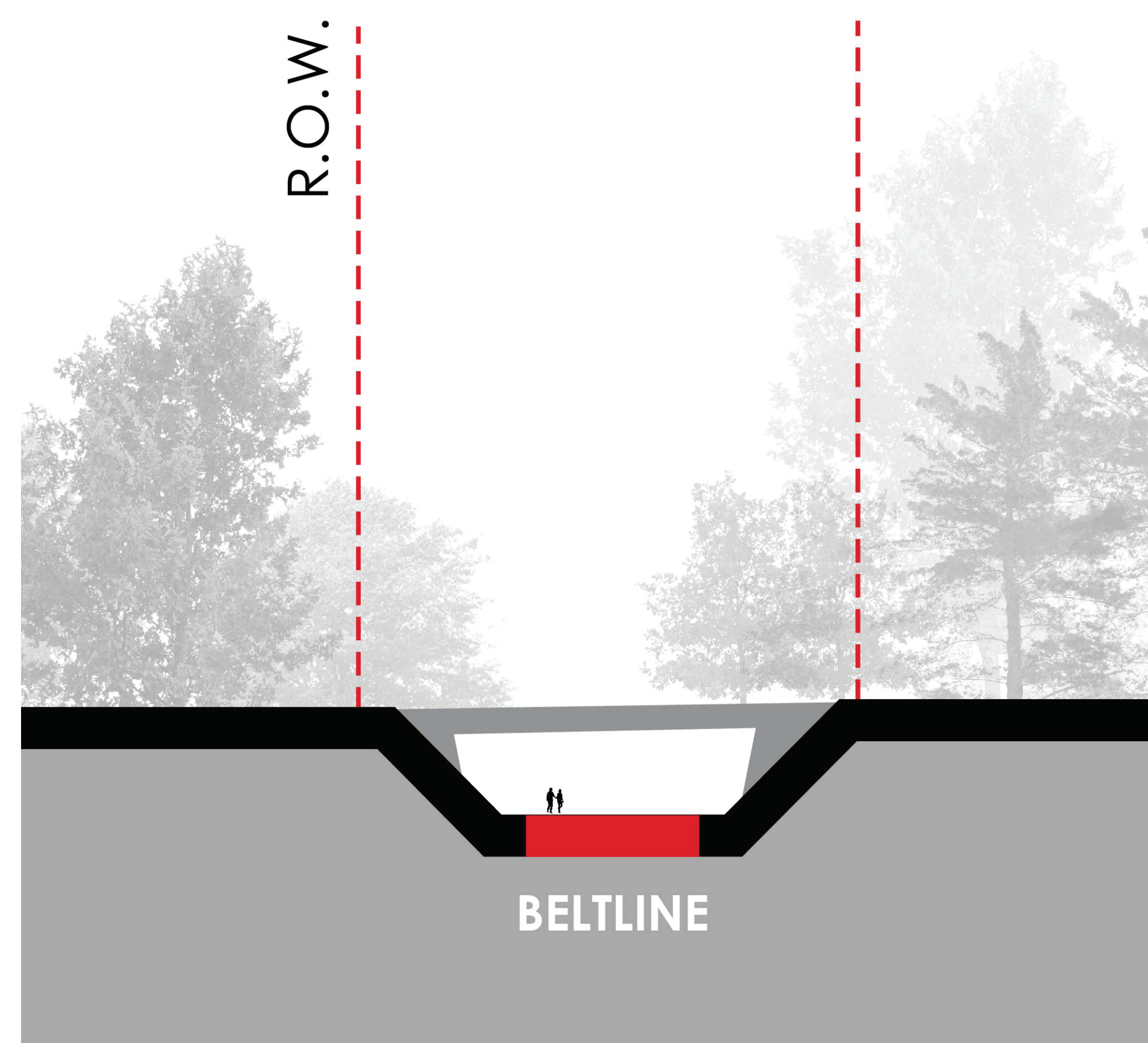
A place that offers **SPECIAL VIEWS**, **VISTAS**, or **EXPERIENCES**

A place that contains **SUFFICIENT LAND AREA** for the development of the above

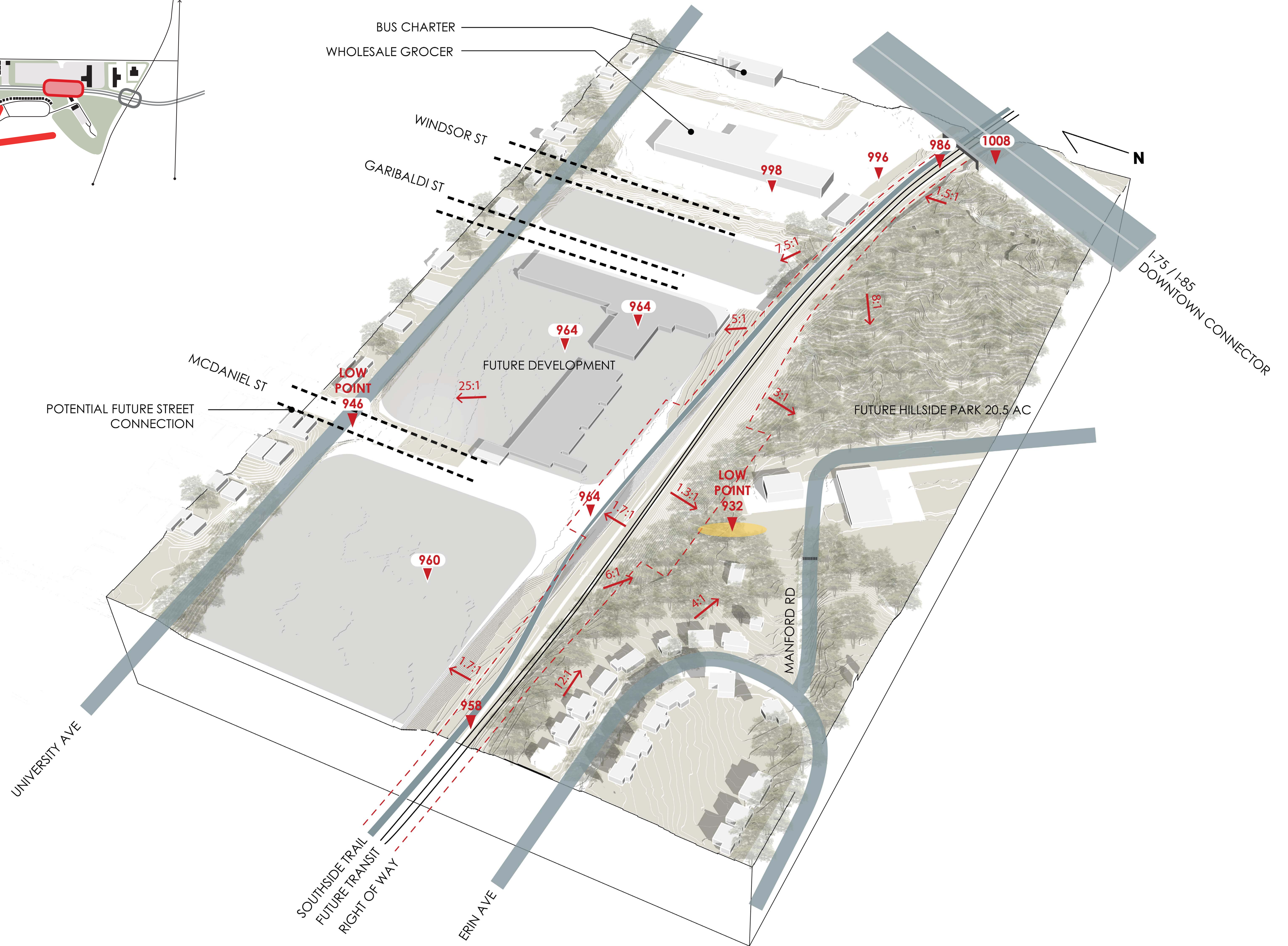
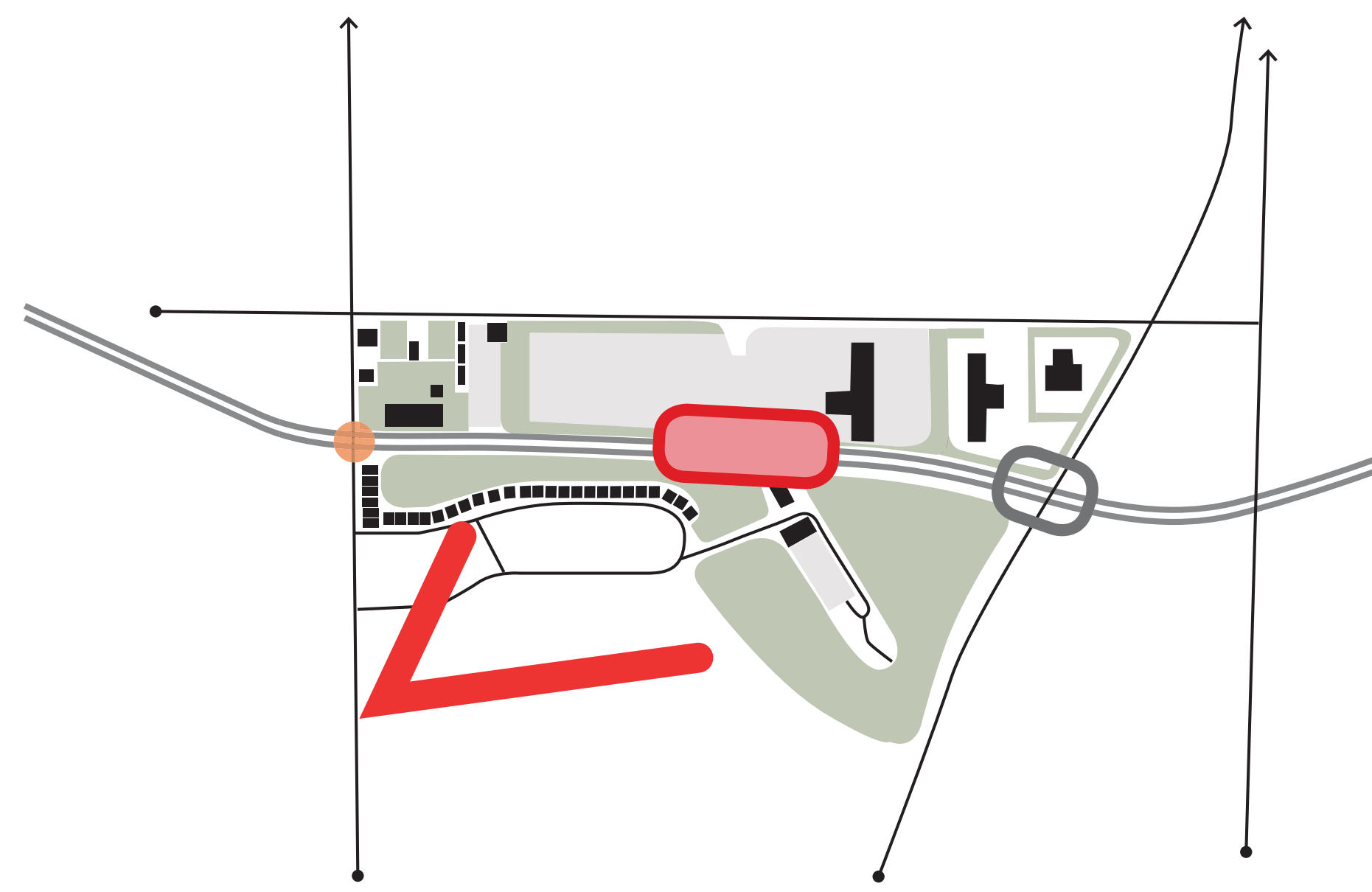


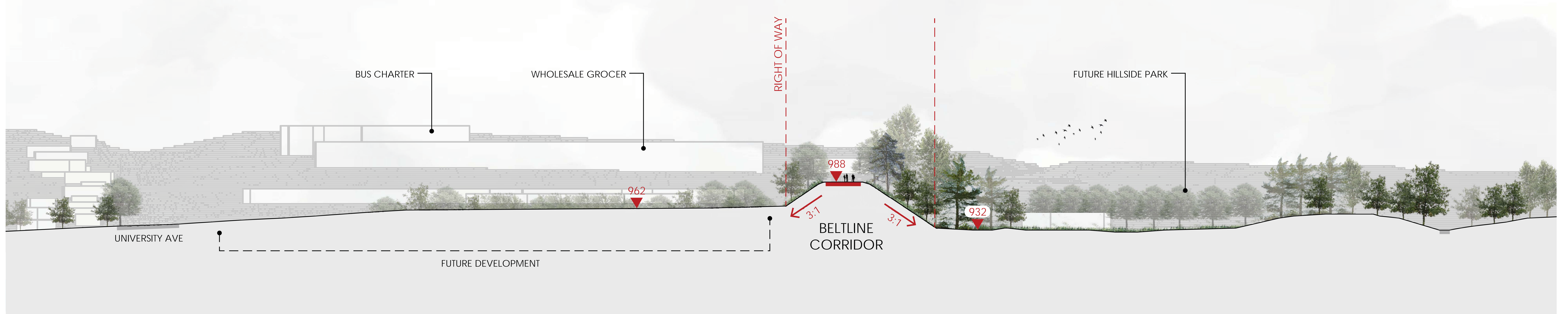
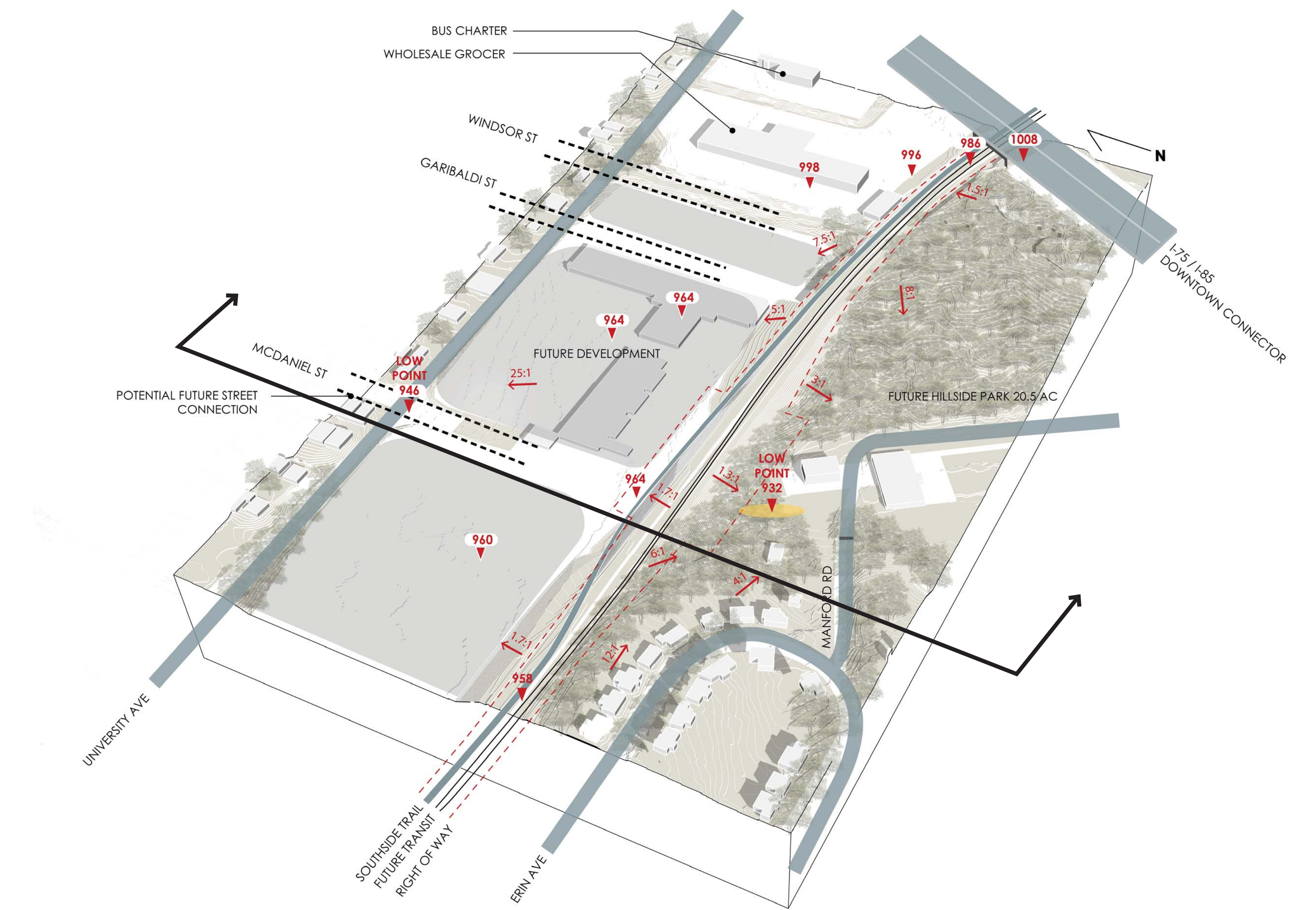
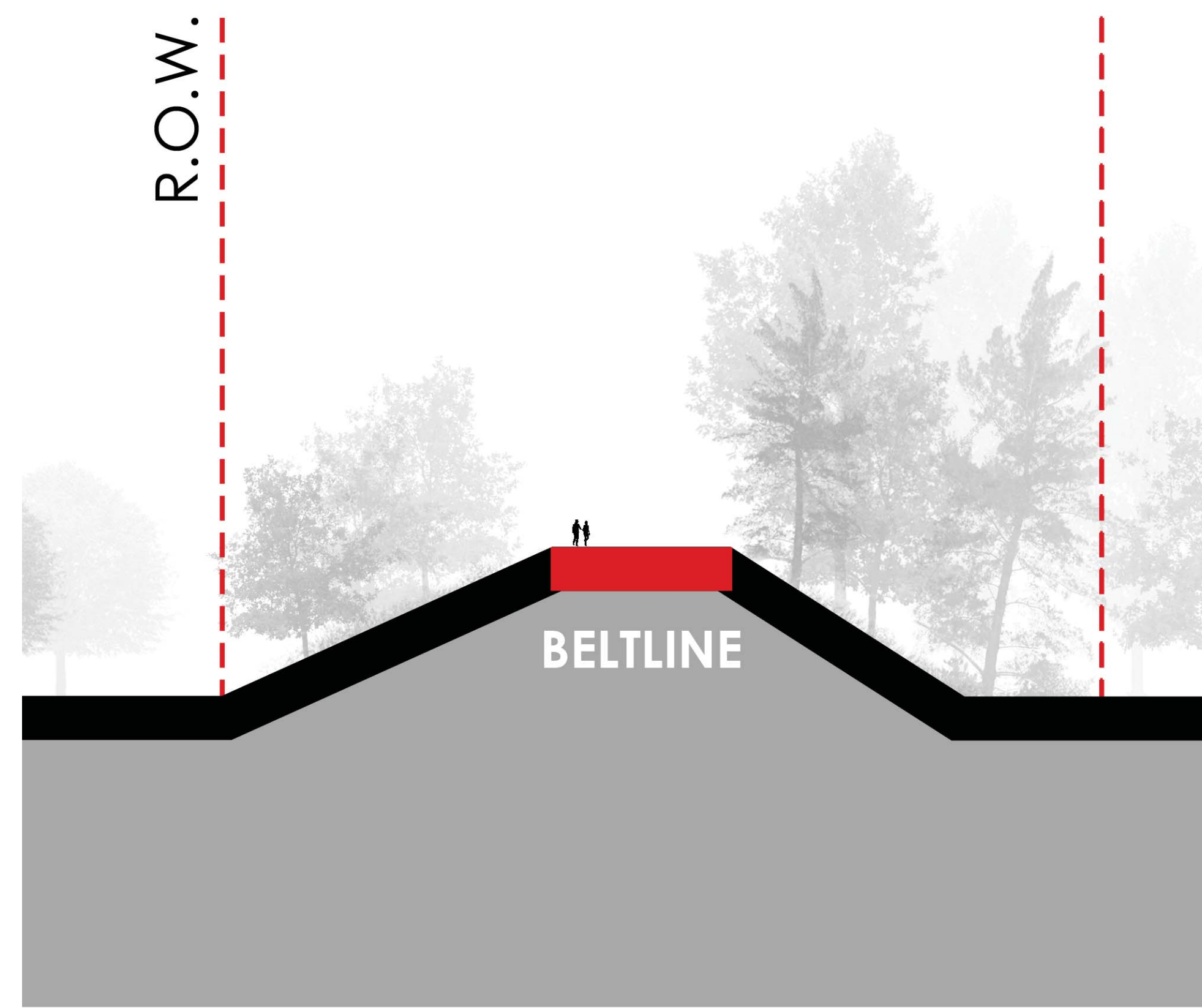


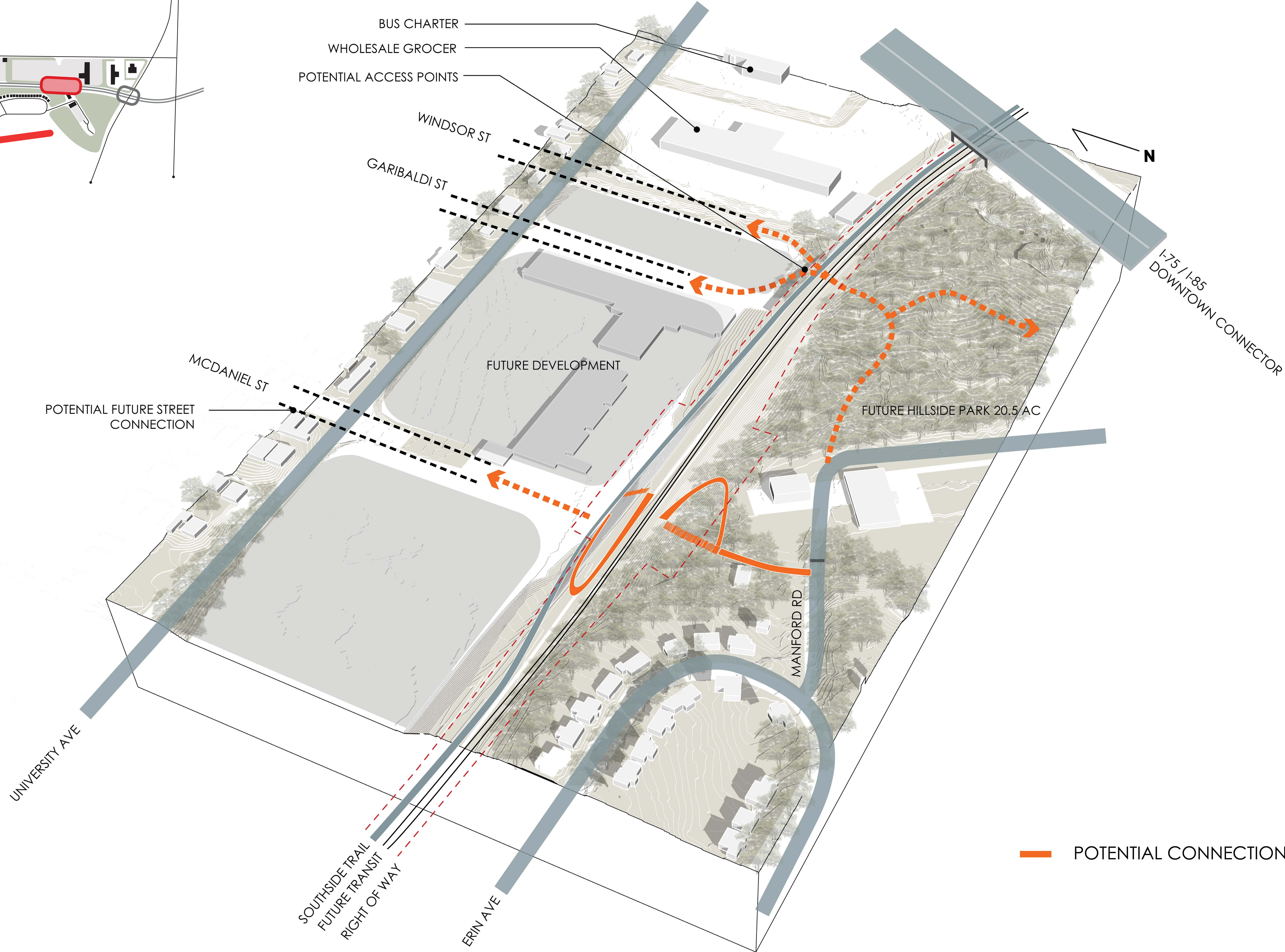
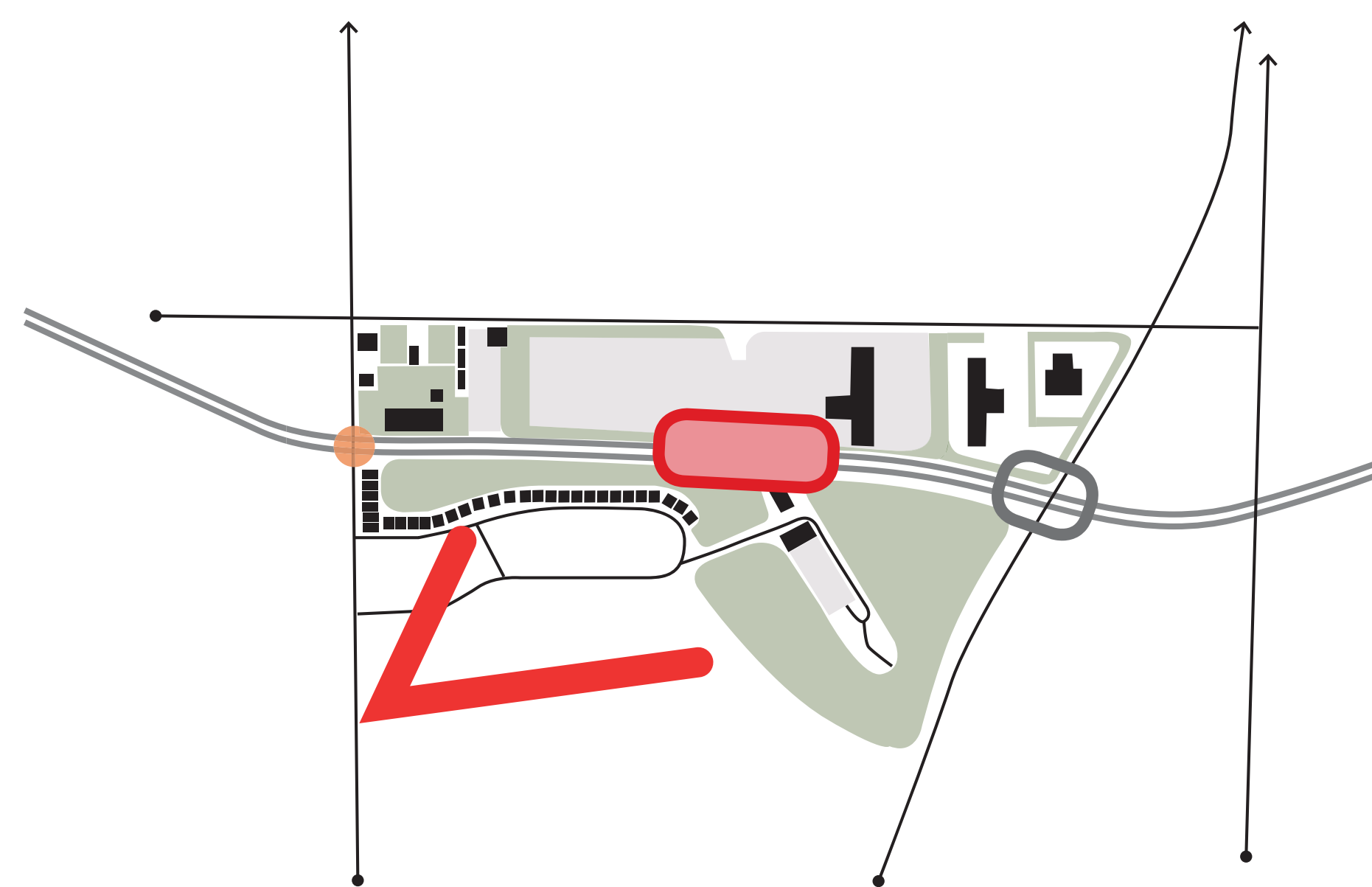


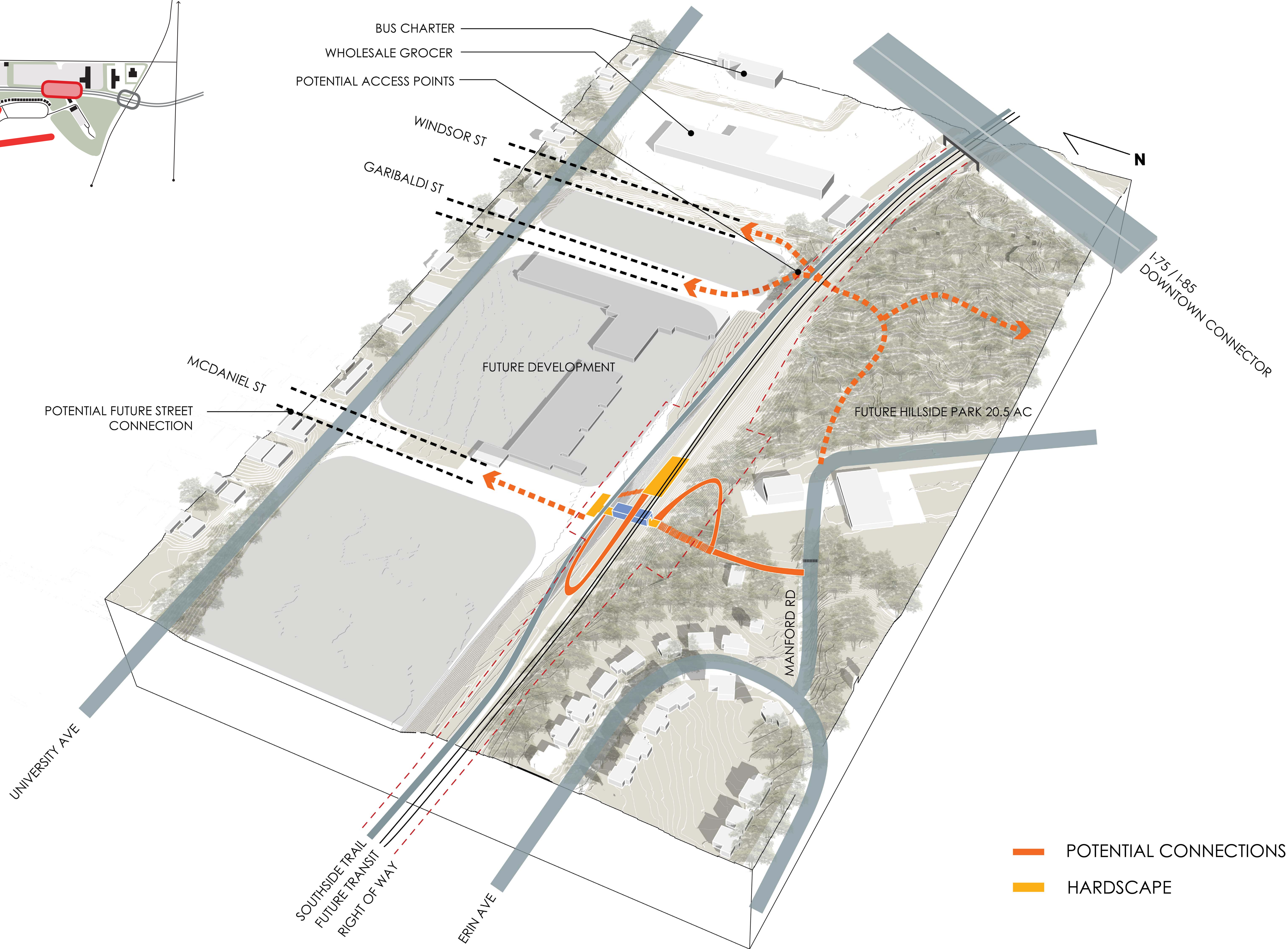
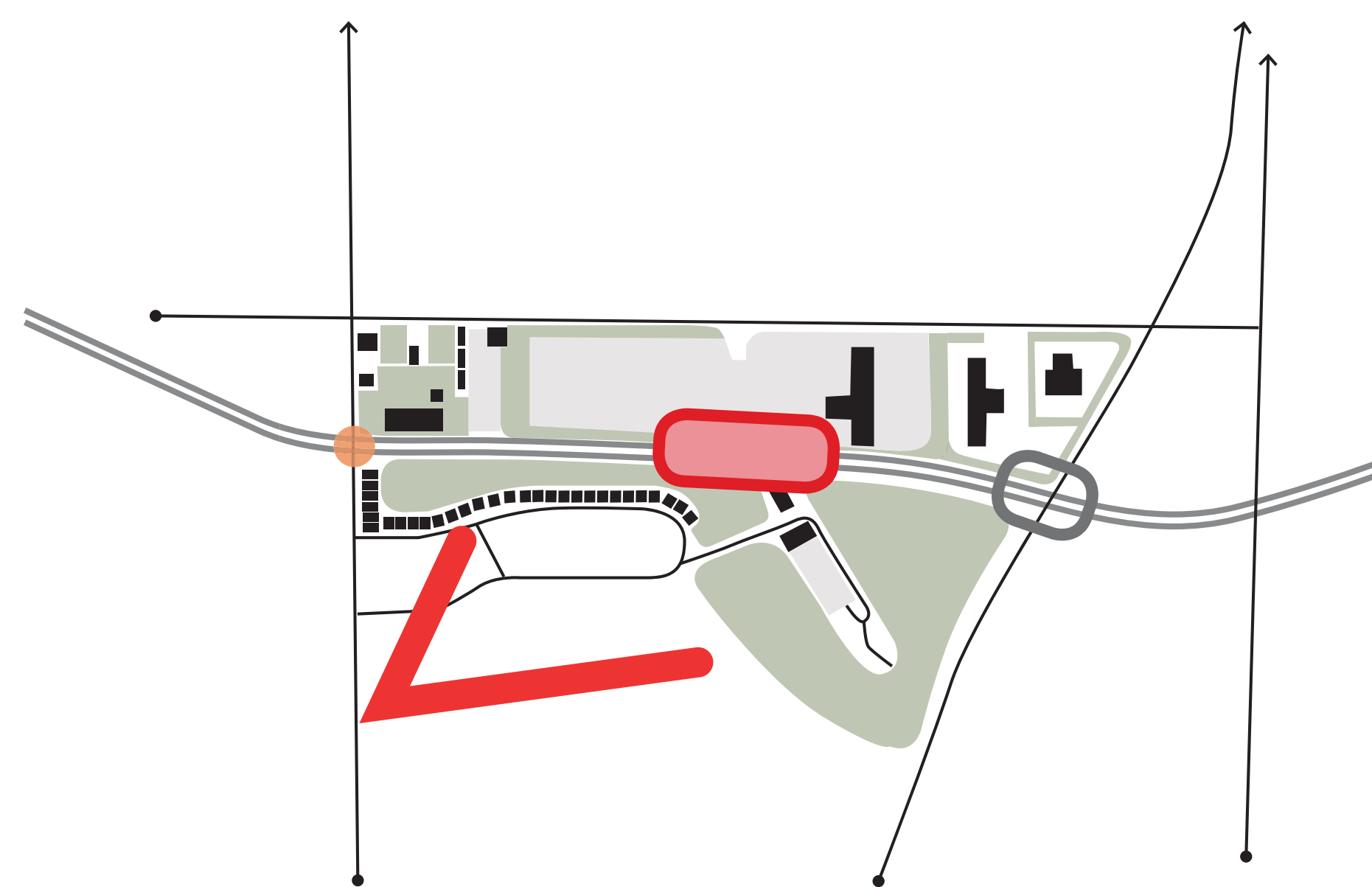


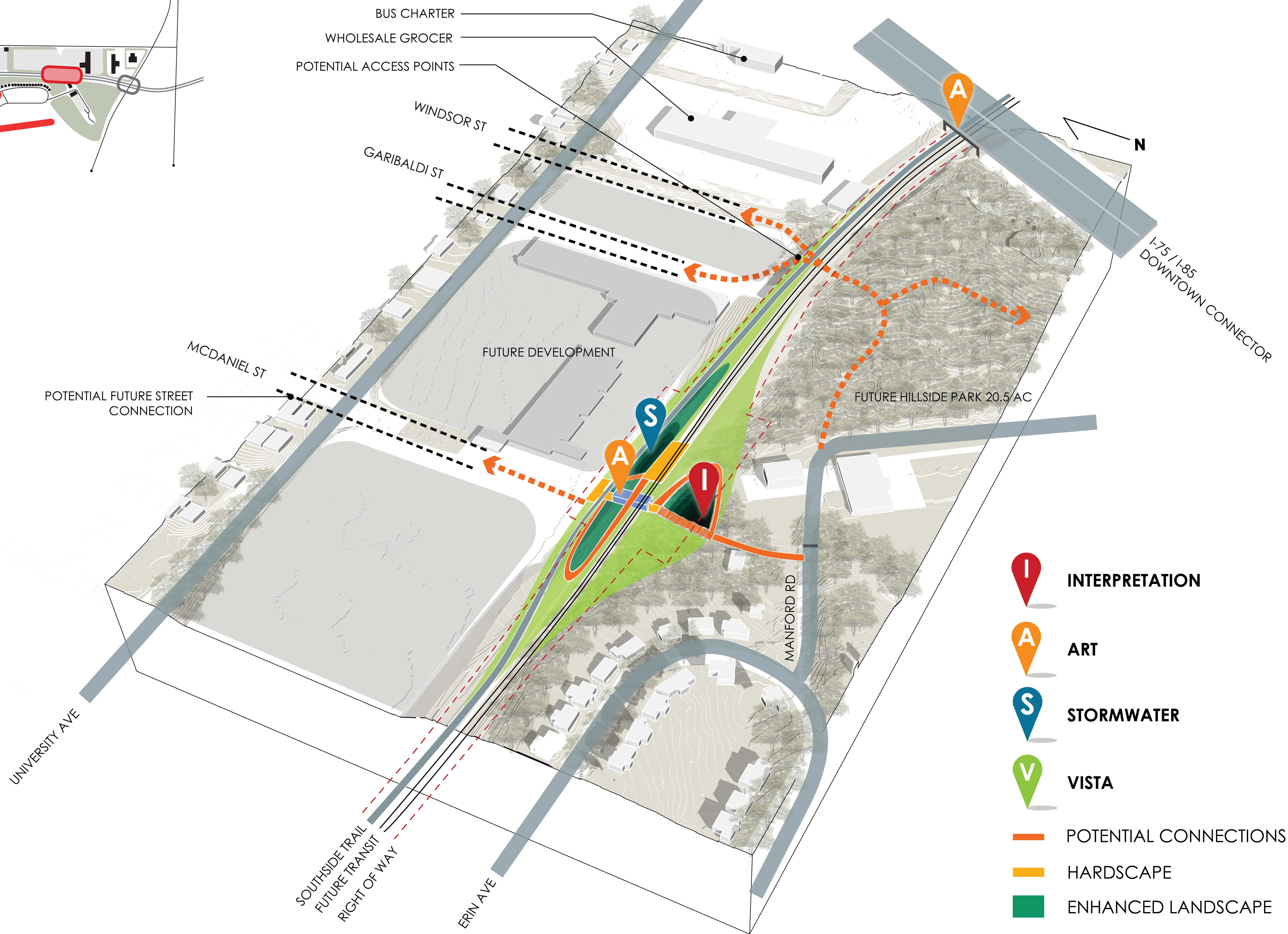
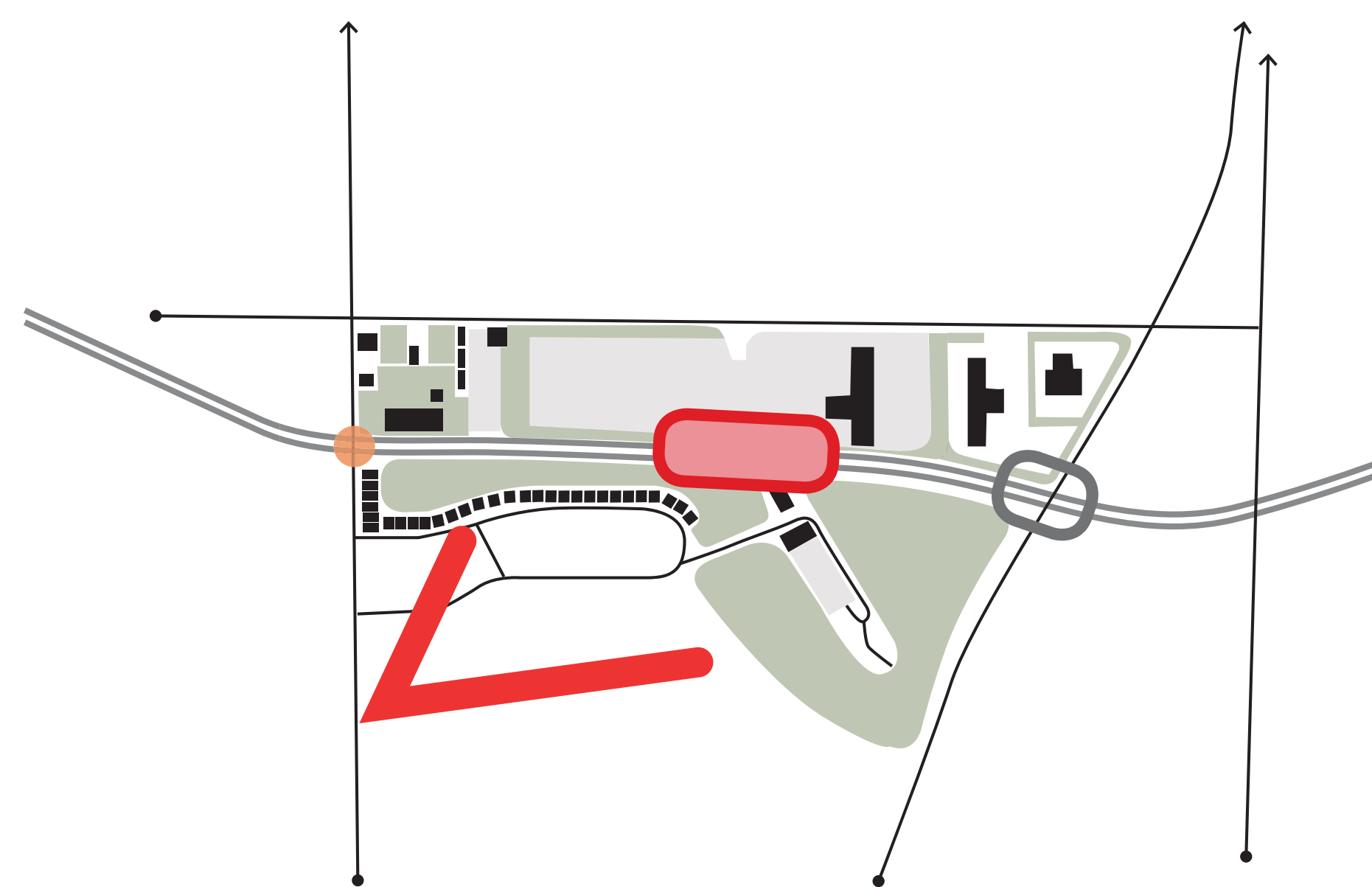












BREAKOUT SESSION

WE WANT YOUR FEEDBACK ON...

- Prioritization of access points along ENTIRE corridor
- Vertical connection concepts at grade crossing - Metropolitan Pkwy
- Node opportunities - Pryor Road to University Ave.