

PERKINS
+ WILL

SOUTHEAST ATLANTA BELTLINE CORRIDOR DESIGN

ABCD – Analysis



ABCD – Design Drivers



CHARACTER



MULTI-RE-USE



THRESHOLD



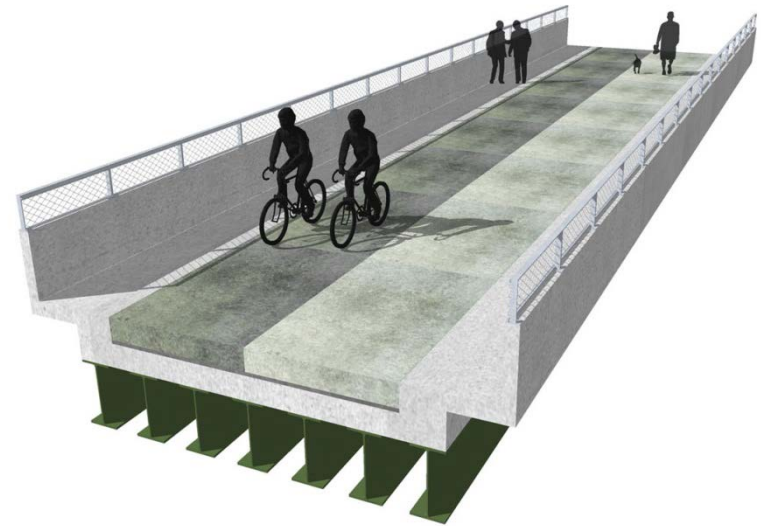
PERFORMANCE



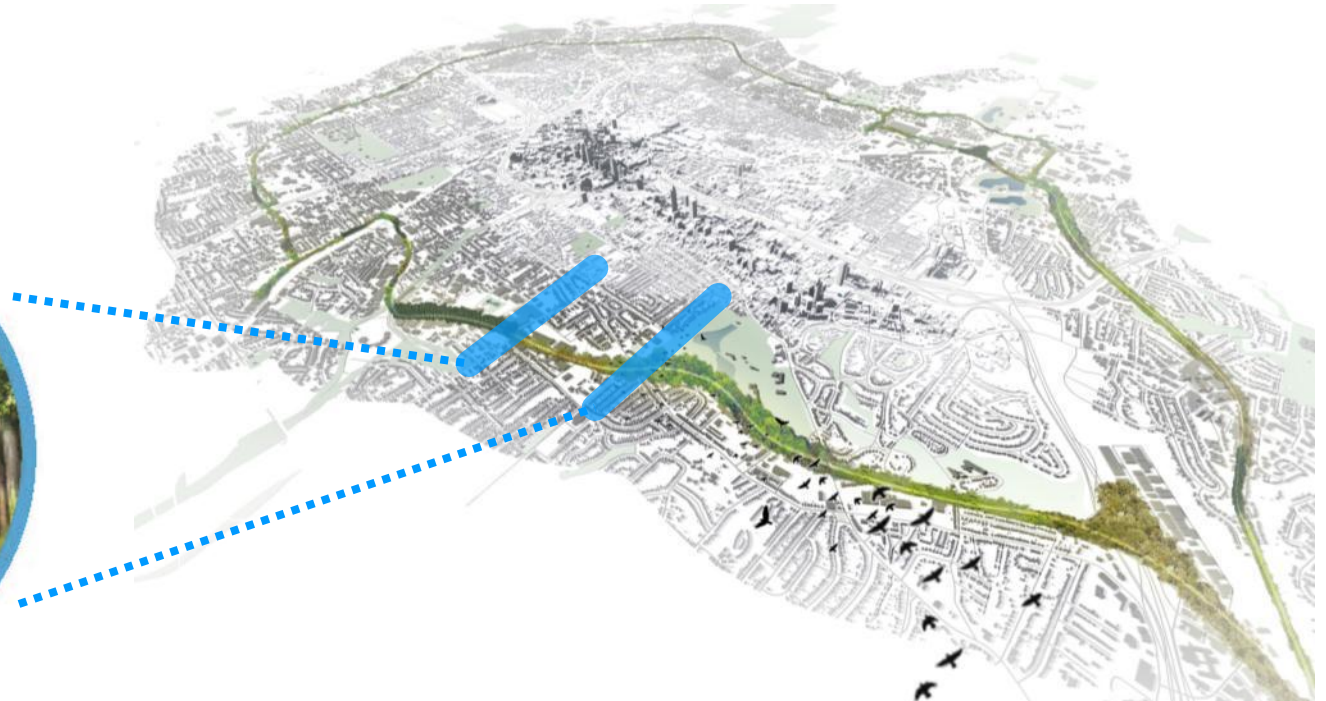
PHASED BUILDOUT



ABCD – Design Framework



ABCD – Preliminary Design



ABCD – Future Design Work



1

2

3

4

5

Analysis Typical Conditions

Track Position



Edges + Adjacencies



Street Connections



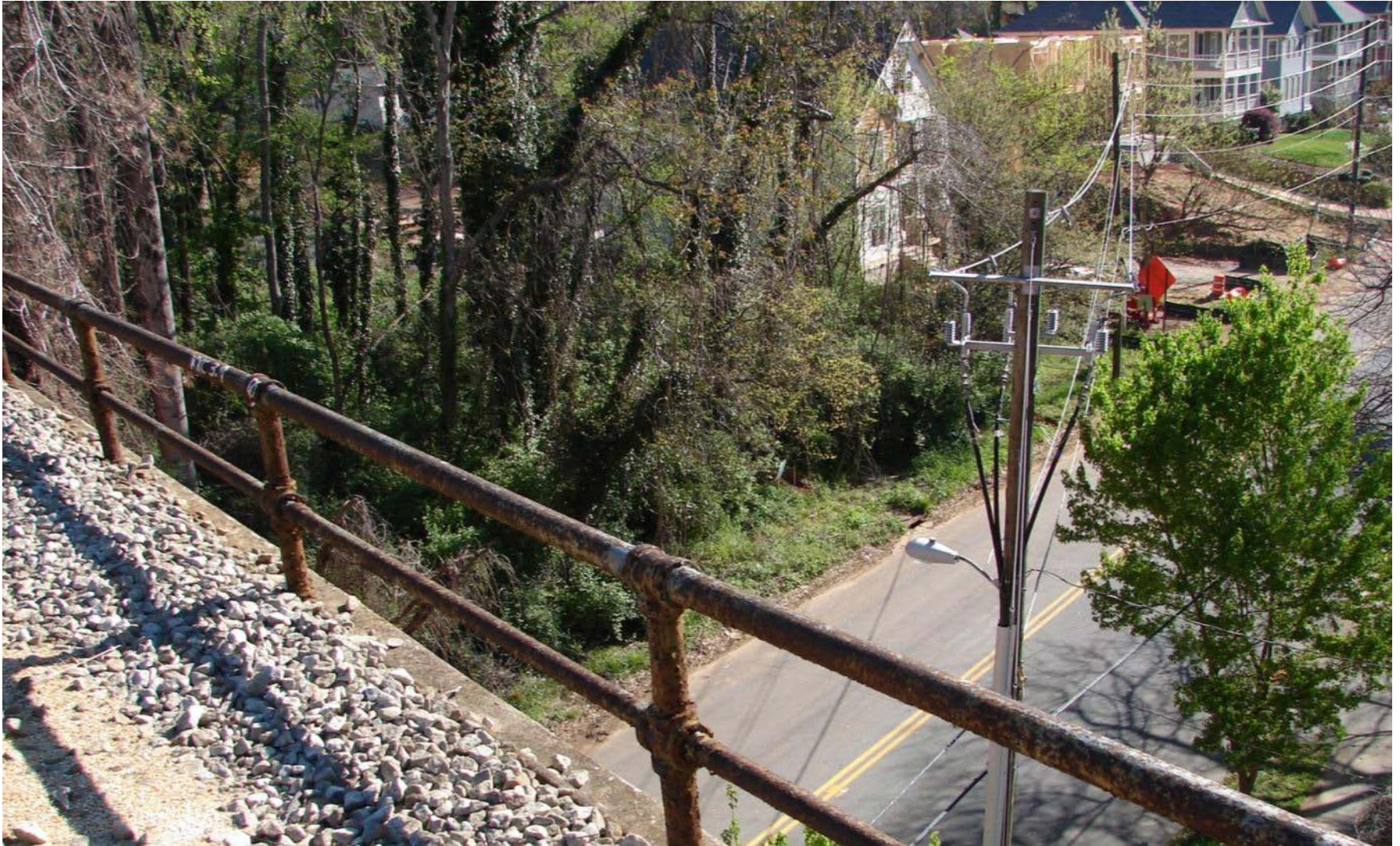
Natural Systems + Character



Alignment, Structures + Landform



Physical Context



Track Tectonics



Analysis
Program

Transit



Trail



Public Space



ANALYSIS

Conditions

Program



DESIGN

Design Drivers

Design Framework

Design Drivers



CHARACTER

- Interpret and evoke its origin as a series of railroad corridors;
- Cultivate its sense of adventure, discovery and informality;
- Respect its unique landscape and historical features.



MULTI-RE-USE

- Transform it for a new set of infrastructure and a signature public meeting ground;
- Promote both mobility and destination;
- Design for changing interpretation of spaces and elements over time.



THRESHOLD

- Design a coherent public space, unchallenged by private adjacencies;
- Convert its back-door condition to be more fully accessible;
- Reconcile its goal of clarity with confusing adjacencies and existing conditions.



PERFORMANCE

- Support existing habitat and the generation of biodiversity;
- Optimize its performance through a sustainable approach to energy, water, light and materials;
- Where possible, contribute to broader sustainability goals and opportunities beyond its right-of-way.



PHASED BUILDOUT

- Design for incremental buildout of segments and features;
- Define ecologically strategic investments;
- Ensure that its amenities are equitably distributed and that it will meet future demands.



Design Framework

PERKINS
+ WILL

22 MILES OF VARIETY
22 MILES OF CONTINUITY

Design Framework

22 Miles of Variety

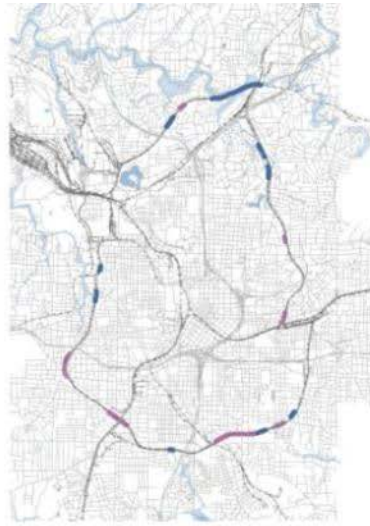
Variety – Existing



Variety – Existing



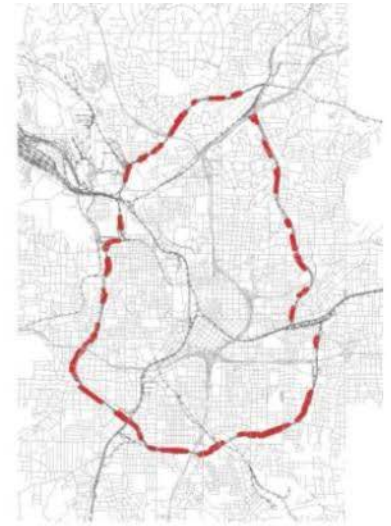
Neighborhood framework



Waterways + stormwater



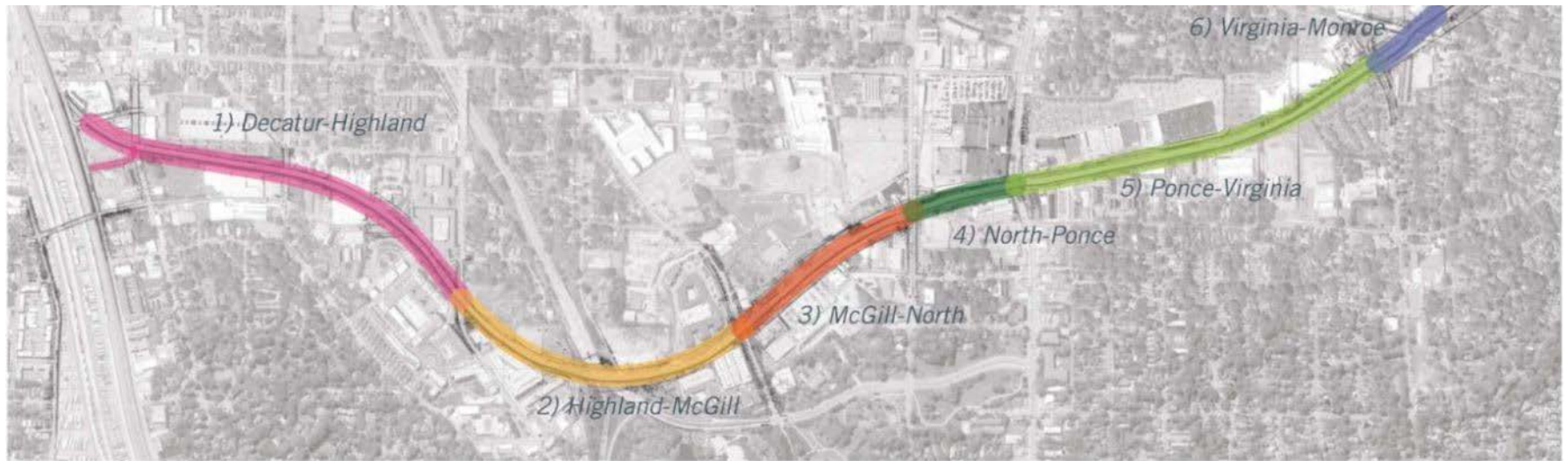
Tree canopy



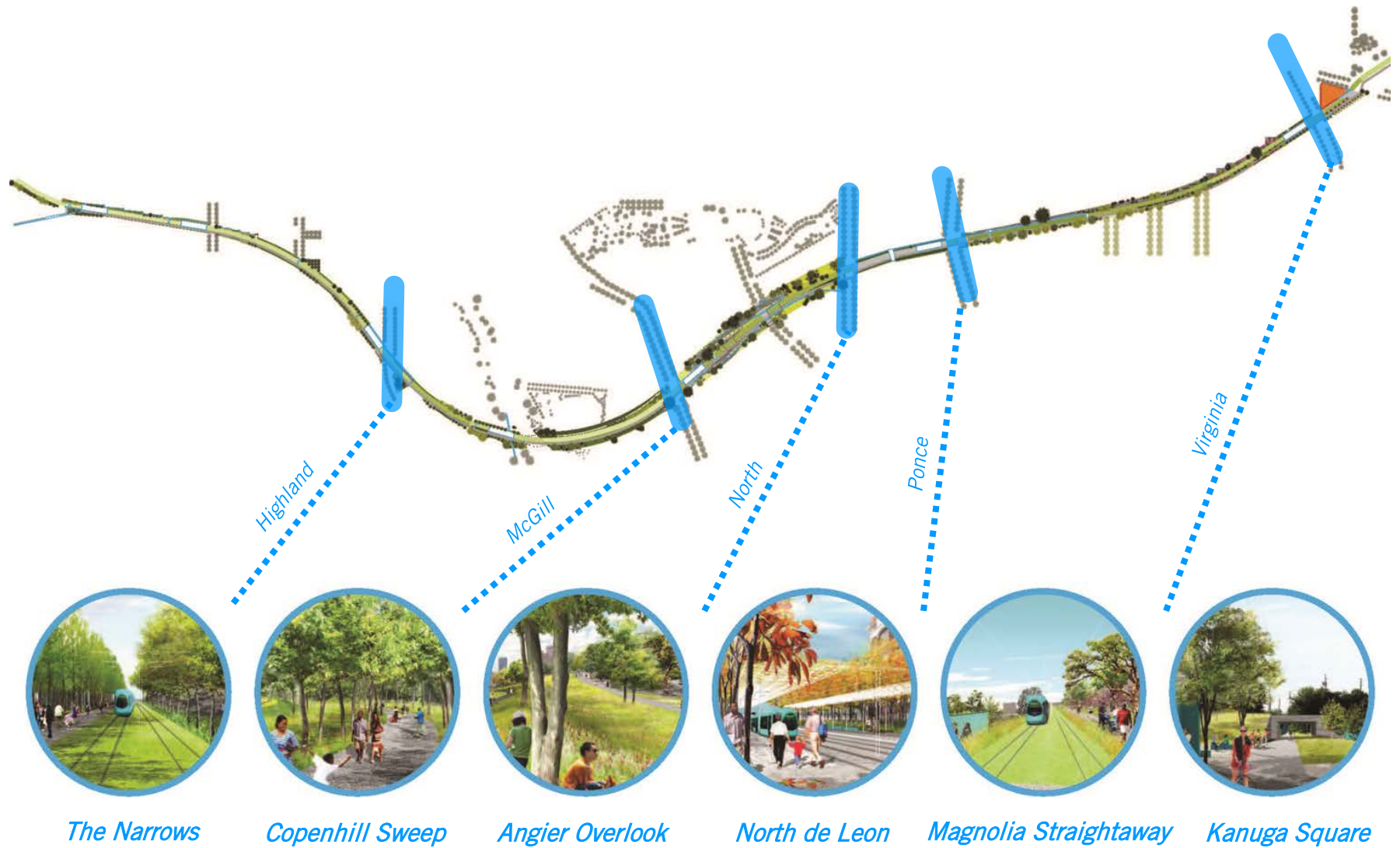
Railroad landforms

- **NATURAL SYSTEMS** - waterways, stormwater challenges, tree canopy, etc.
- **PHYSICAL FORMS** - bridges, embankments, other landforms
- **HISTORICAL + CULTURAL CONDITIONS** - artifacts, historic context
- **CITY FRAMEWORK** - skyline views, connecting streets, communities, parks, schools, etc.

Variety – Proposed



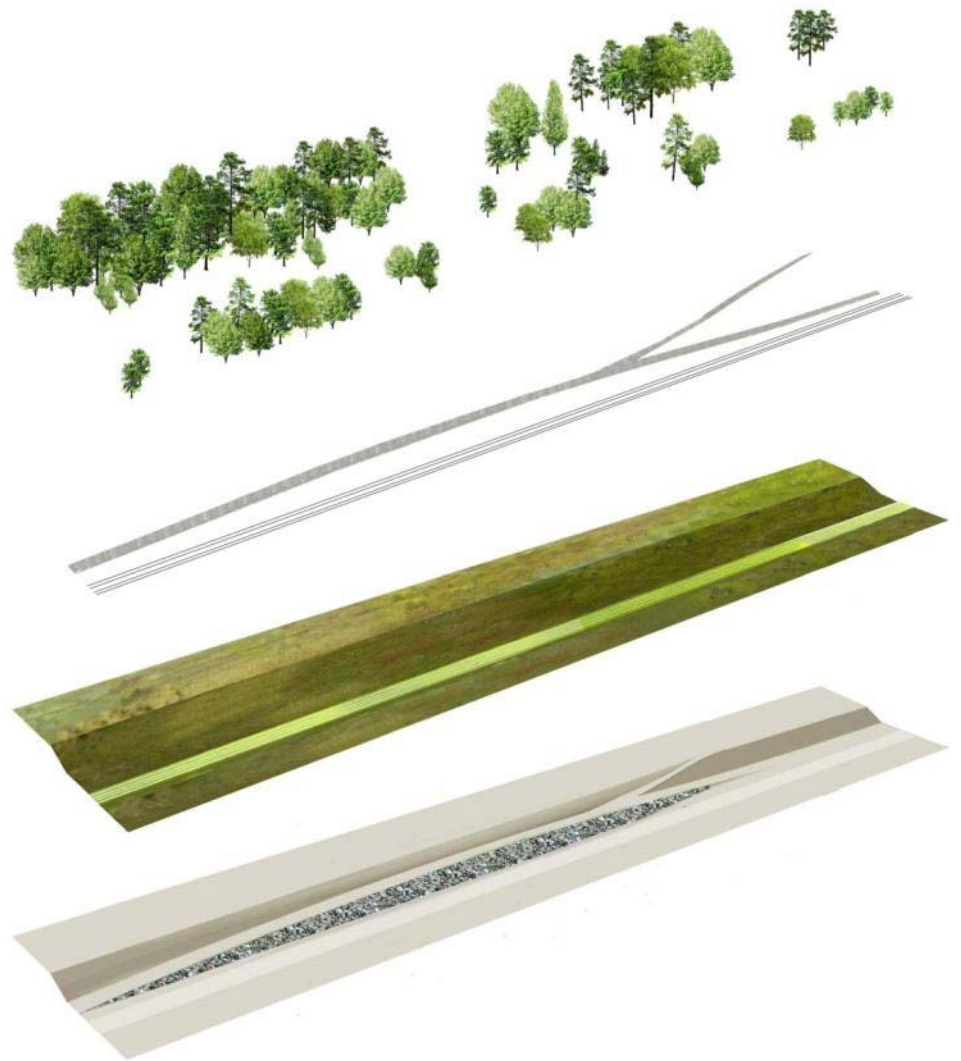
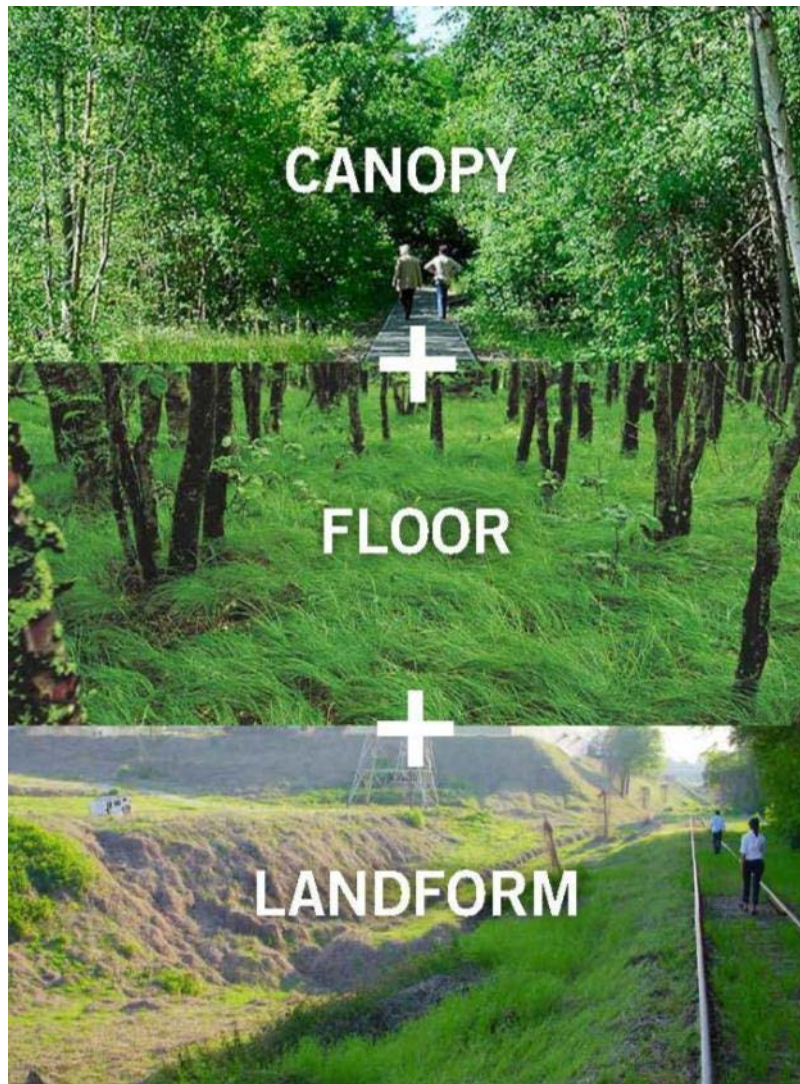
Variety – Character Rooms



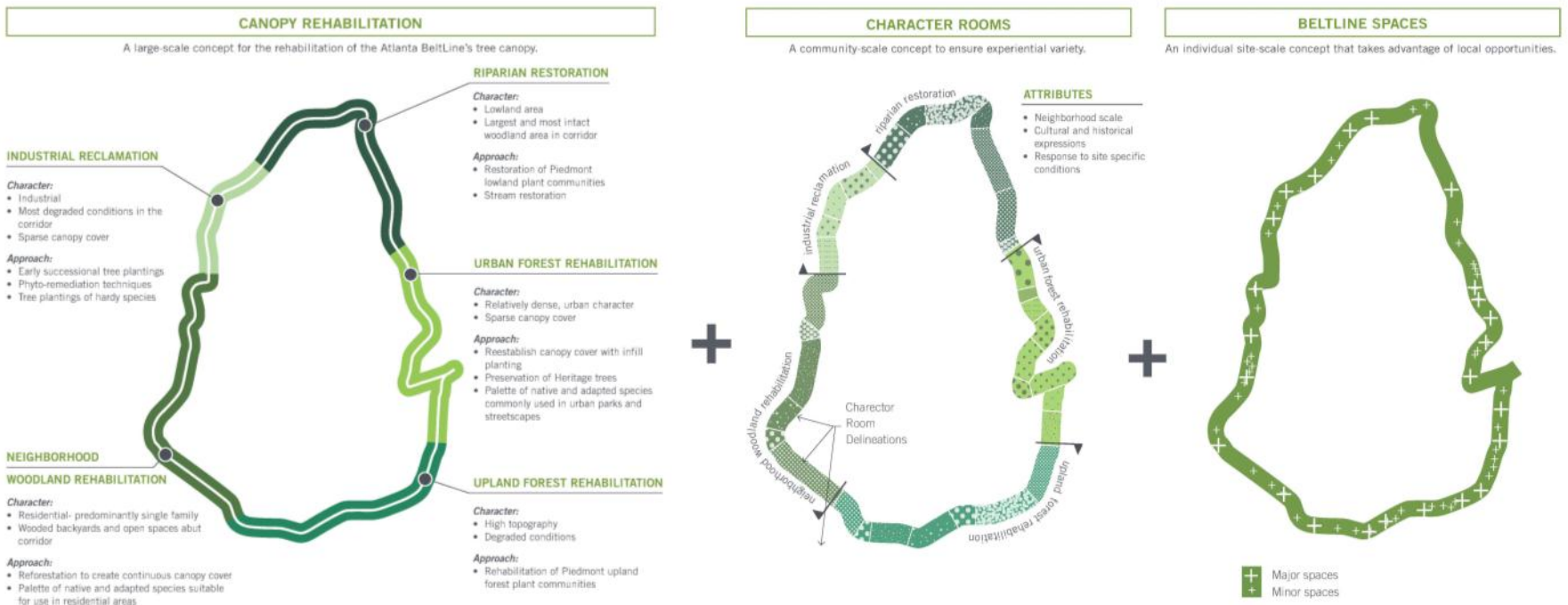




A Site-Specific, Layered Framework



A Big-Scale, Layered Canopy



Canopy Rehabilitation

Quercus alba
white oak



Quercus coccinea
scarlet oak



Quercus velutina
black oak



Quercus stellata
post oak



Quercus prinus
chestnut oak



Carya alba
mockernut hickory



Carya glabra
pignut hickory



Carya ovalis
red hickory



Pinus echinata
shortleaf pine



Cornus florida
flowering dogwood



Ulmus alata
winged elm



Ilex opaca
american holly



Oxydendrum arboreum
sourwood



Cercis canadensis
redbud



Amelanchier arborea
downy serviceberry



Viburnum acerifolium
maple leaf viburnum



Hamamelis virginiana
witch-hazel



Viburnum rafinesquianum
downy arrowwood



Euonymus americanus
strawberry bush



Vaccinium stamineum
deerberry

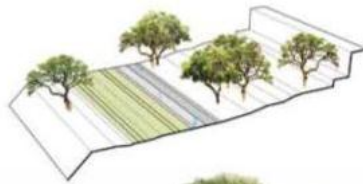


Vaccinium pallidum
lowbush blueberry

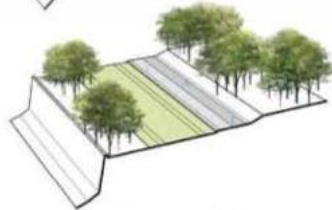


Character Rooms

L1
SPECIMENS + CLEARINGS



L2
FOREST CLUMPS



L3
ALLÉE



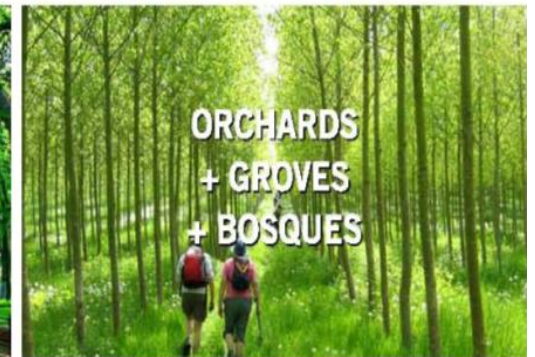
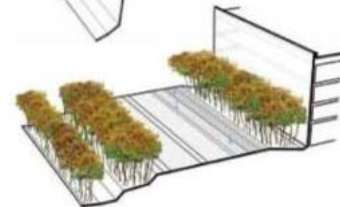
L4
ORCHARDS + GROVES + BOSQUES



L5
FLOWERING UNDERSTORY



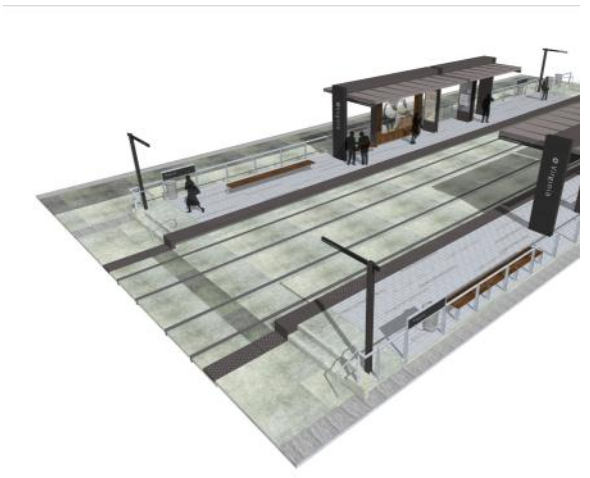
L6
THICKETS



BeltLine Spaces



Green Guideway & Floor

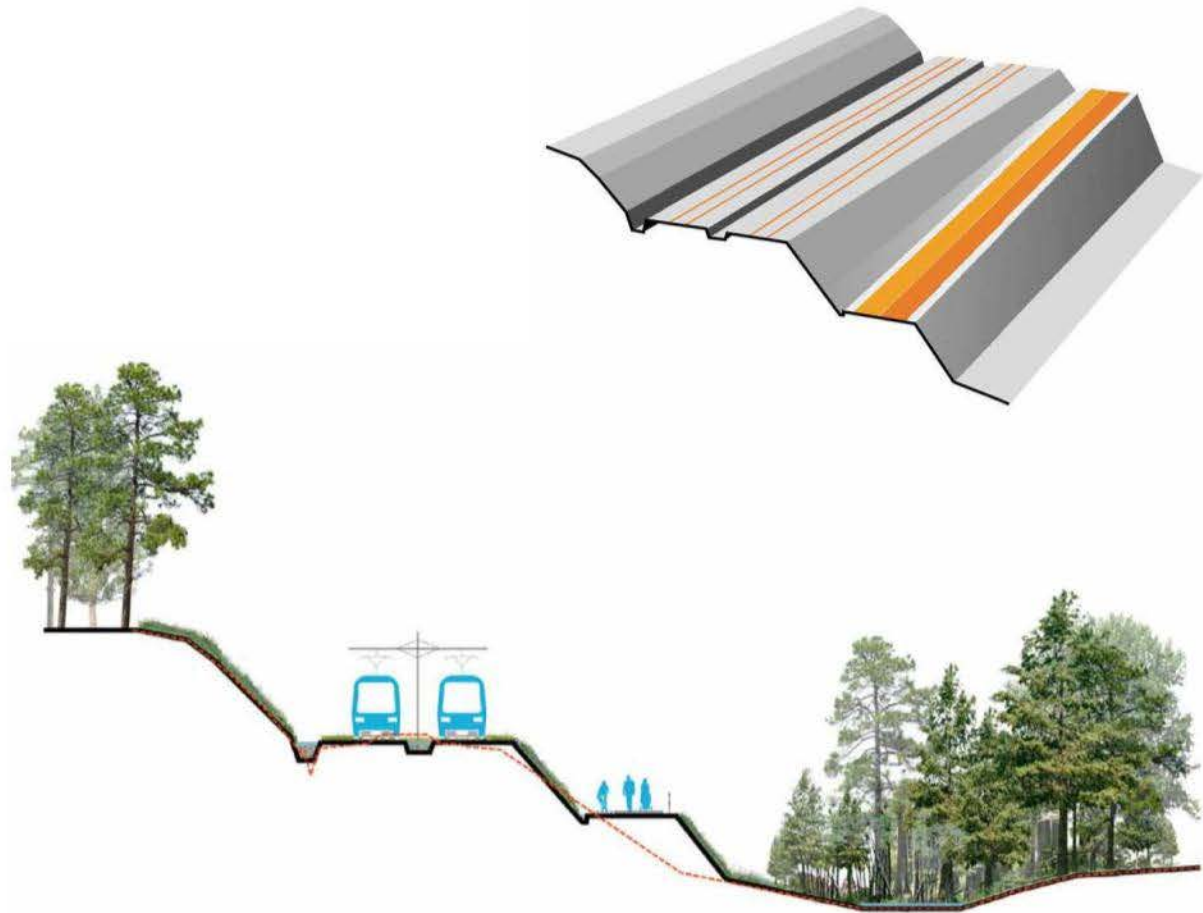


landscape
design

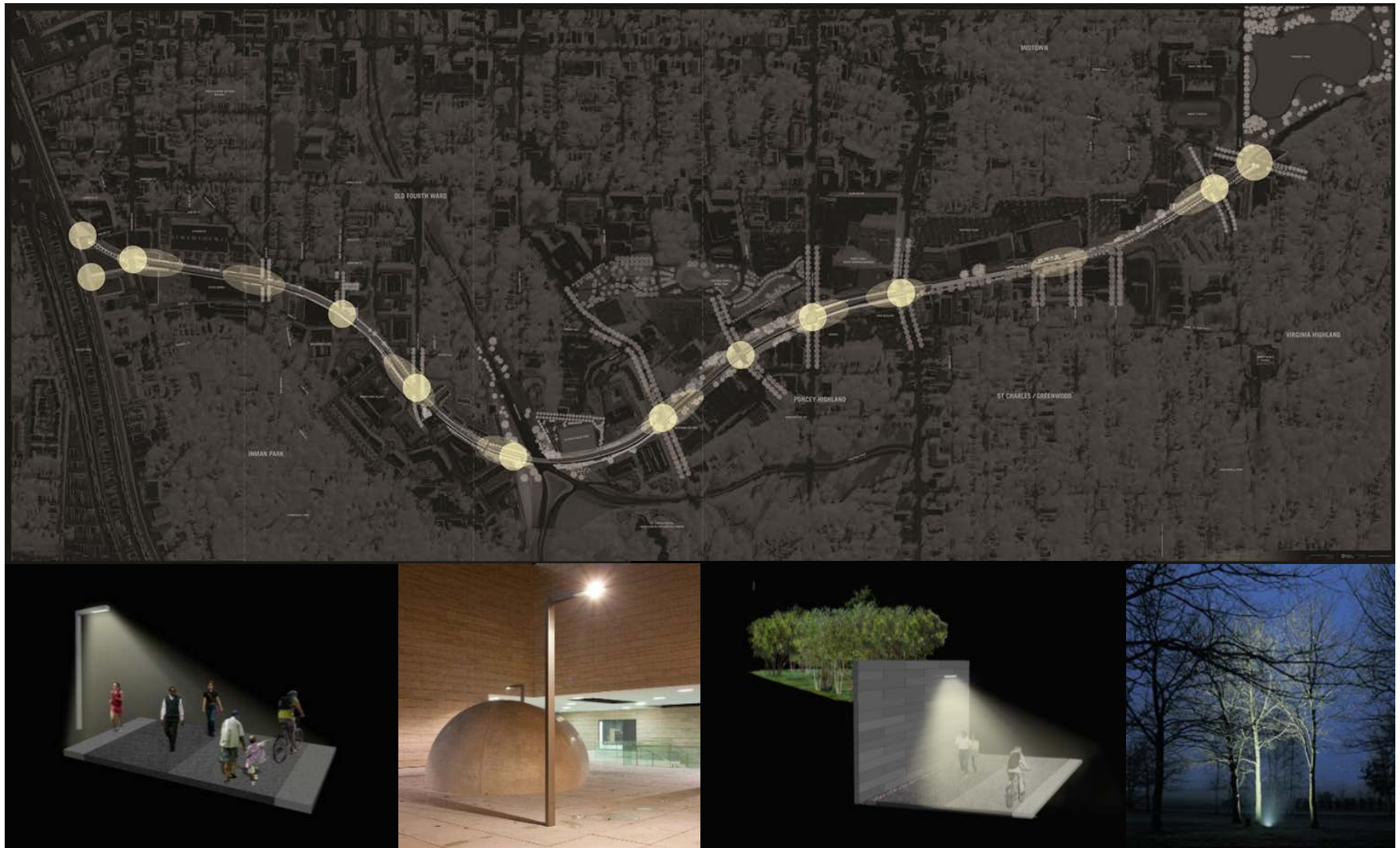
LANDFORMS & STORMWATER CAPACITY

L5.2 Embankments

In portions of the corridor that have steep grades or side slopes, extensive grading will be necessary to assemble the transit guideway and trail surfaces. Stormwater collection will be essential on both the up-slope and down-slope sides of the guideway and trail. The resulting earthwork should be efficient but graceful and provide a smooth experience for users entering, leaving or traveling the Atlanta BeltLine.



Lighting – A Glowing Rhythm of Light



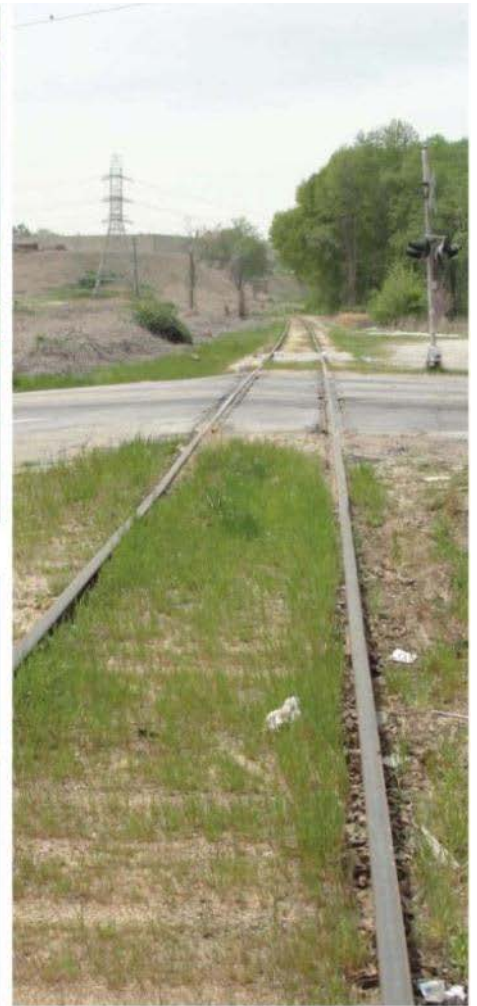
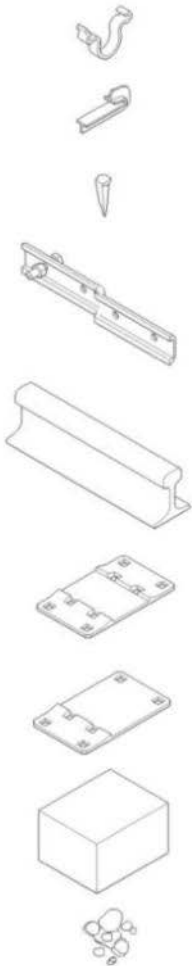
Public Art – Large & Small Scales



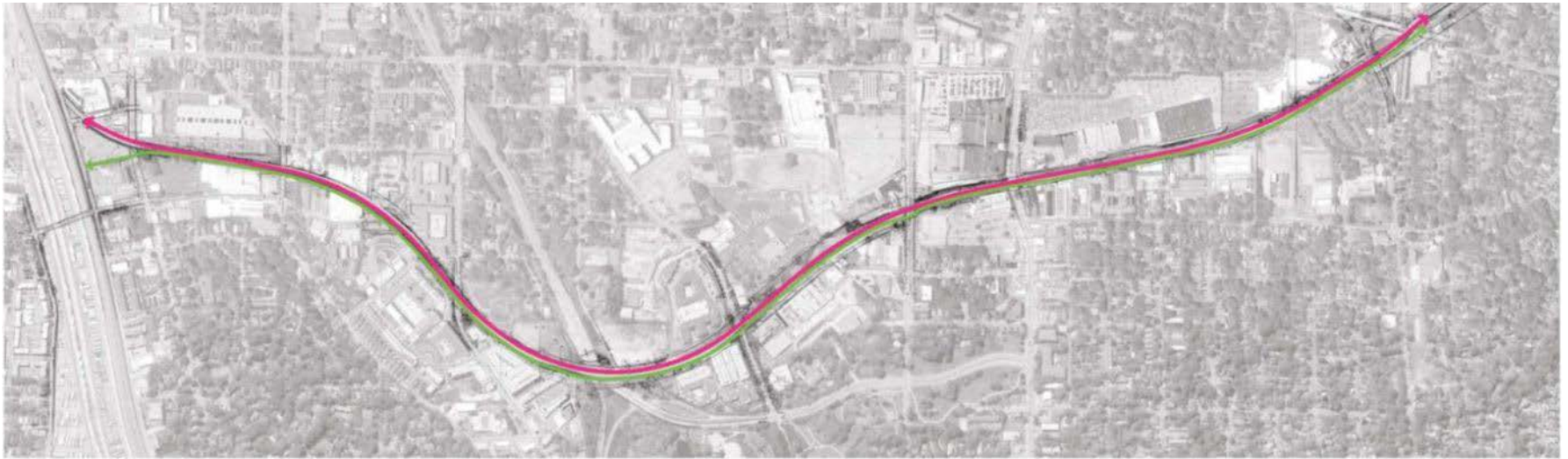
Design Framework

22 Miles of Continuity

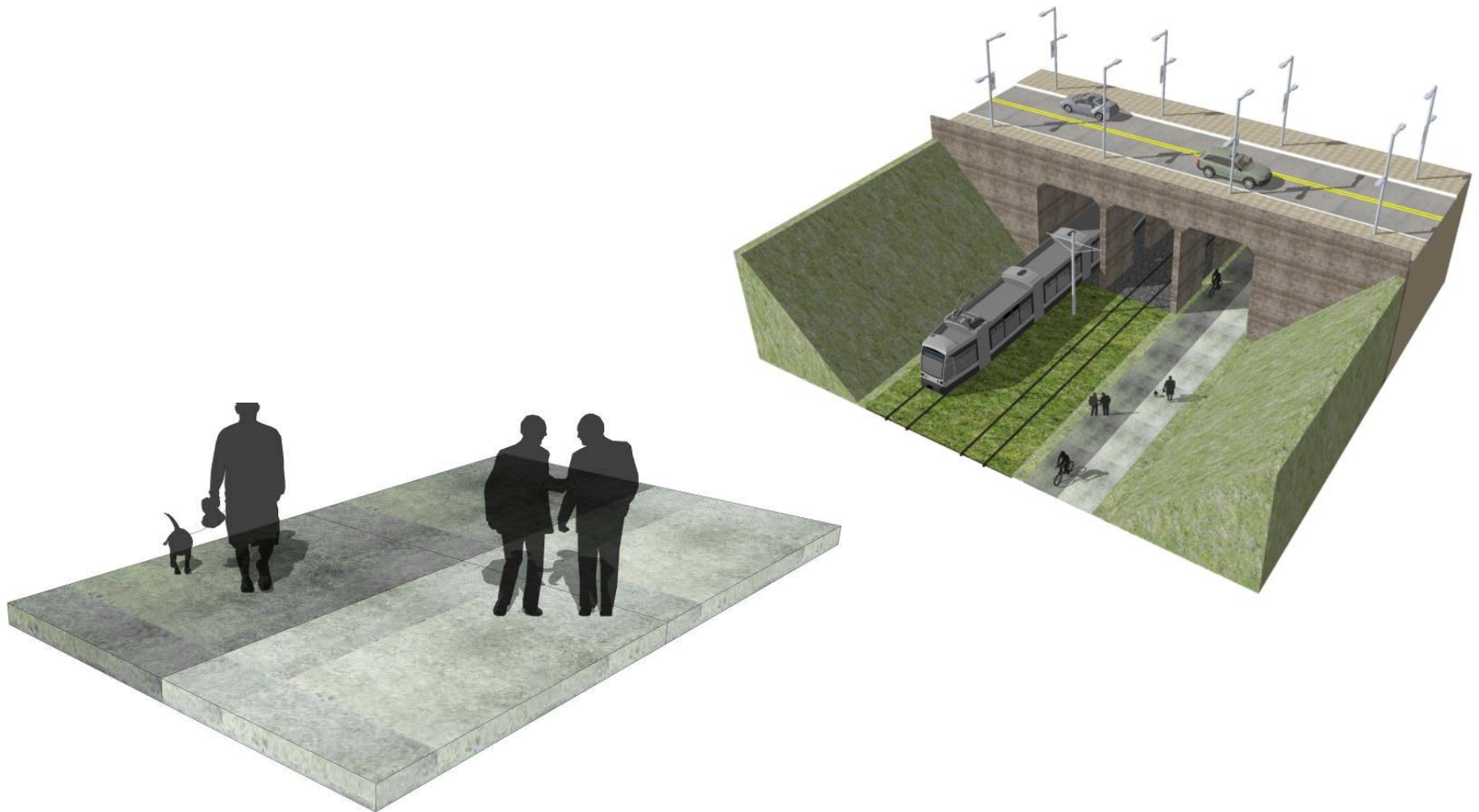
Continuity – Existing



Continuity – Proposed



Hardscape



Bridges & Tunnels



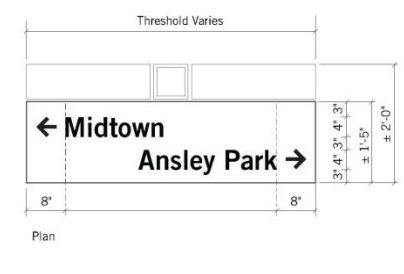
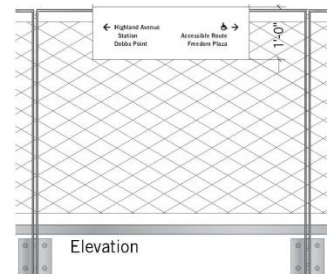
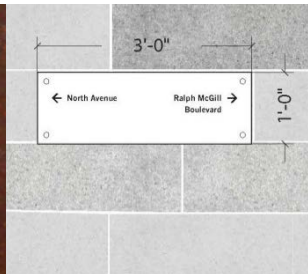
Walls



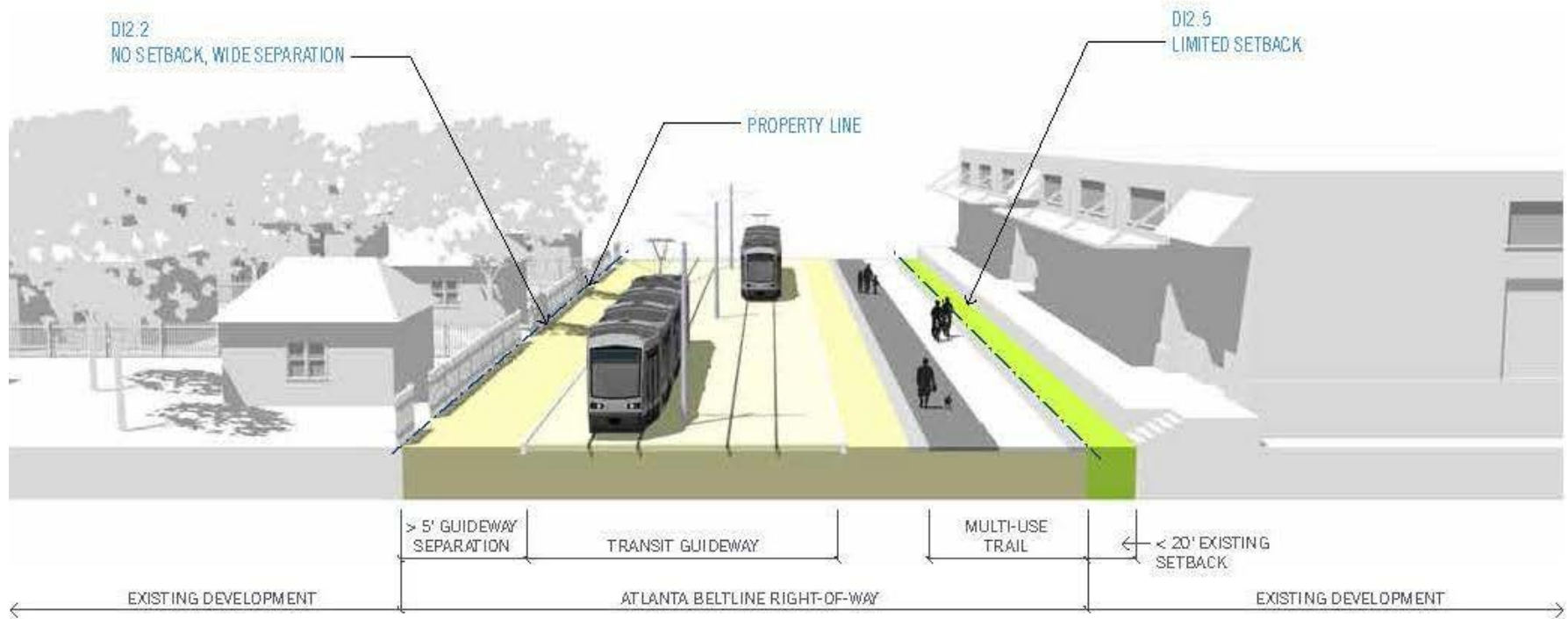
Transit Stations



Signage + Wayfinding



Development Interface

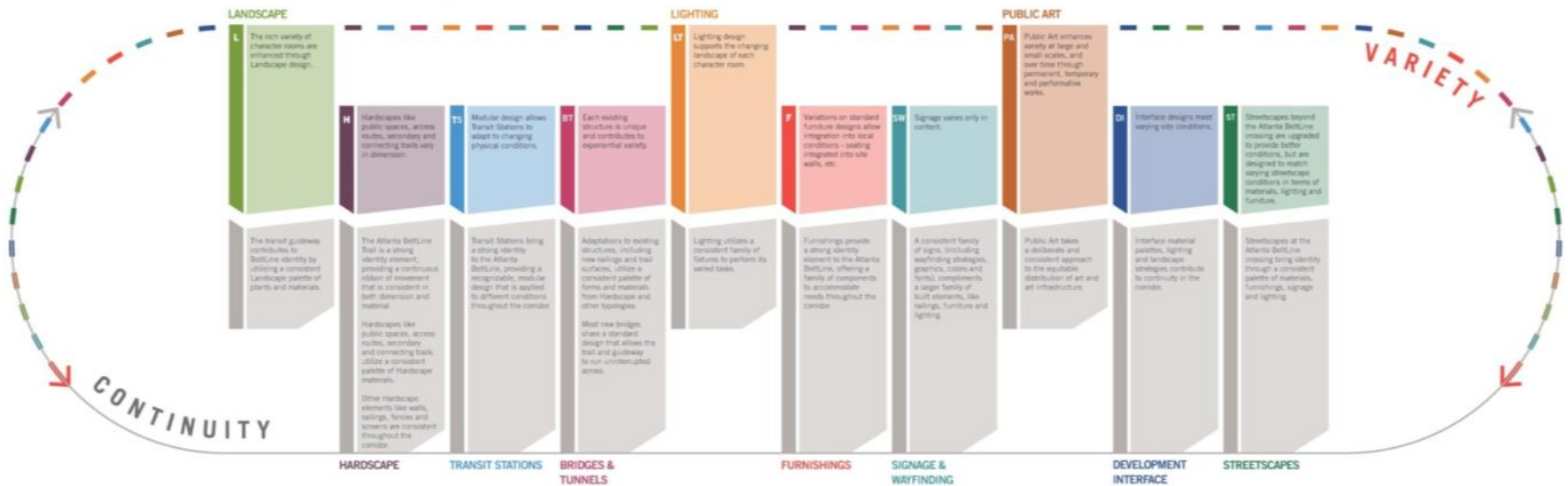


Streetscapes



At-Grade Crossings

Design Framework



Southeast Corridor Design





MURPHY'S CROSSING



FREEDMEN'S PROSPECT



CEDAR GLADE



THE BIG SQUEEZE

A photograph of a railroad track curving through a grassy field. The track is made of metal rails and wooden ties, with gravel ballast. The surrounding area is overgrown with green grass and weeds. In the background, there are industrial buildings and a rocky hillside under a clear sky.

STANTON SWING



INTRENCHMENT RIDGE

RED REACHES





GLENWOOD SPLIT