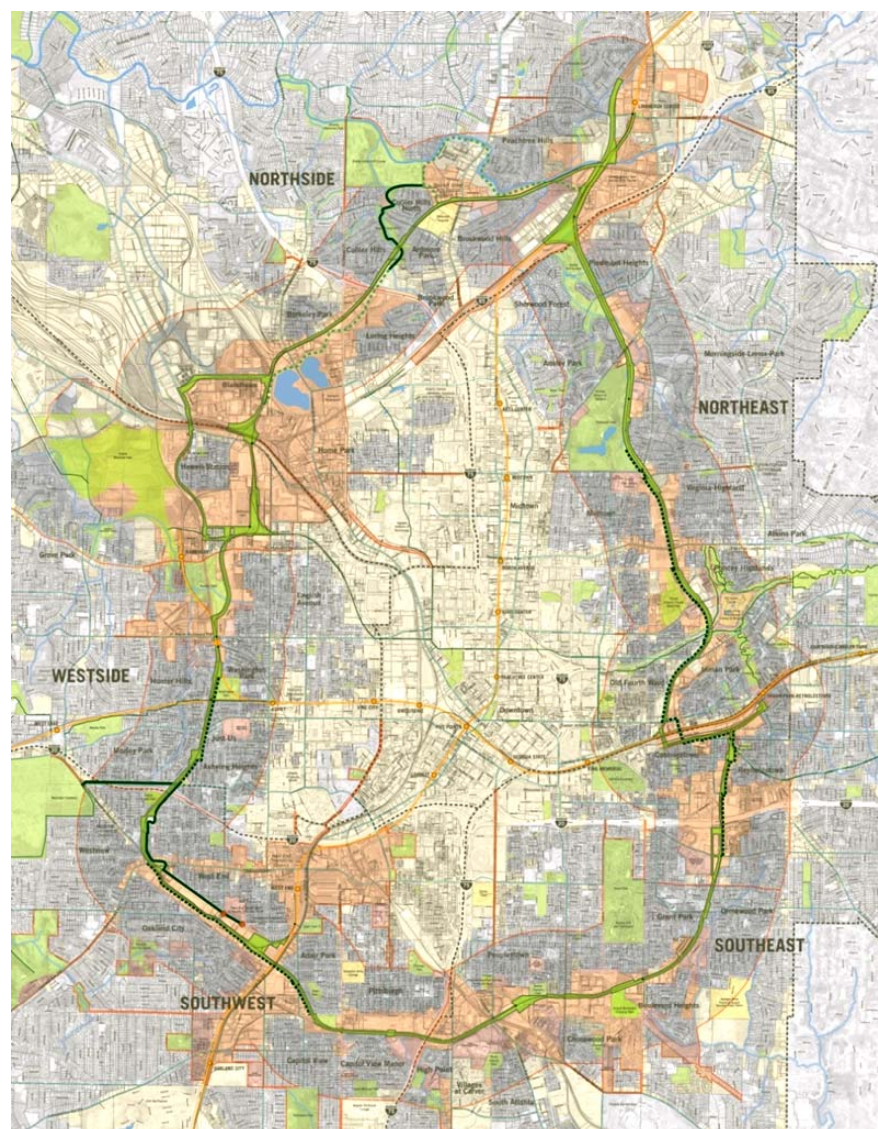


Atlanta BeltLine

Northeast Study Group
Eastside Trail



August 12, 2010

WHAT IS THE ATLANTA BELTLINE?



Transit
22-mile loop



Parks
1300 + new acres



Trails
33 miles



Jobs & Economic Development
20 areas, 30k jobs



Affordable & Workforce Housing
5,000 Units



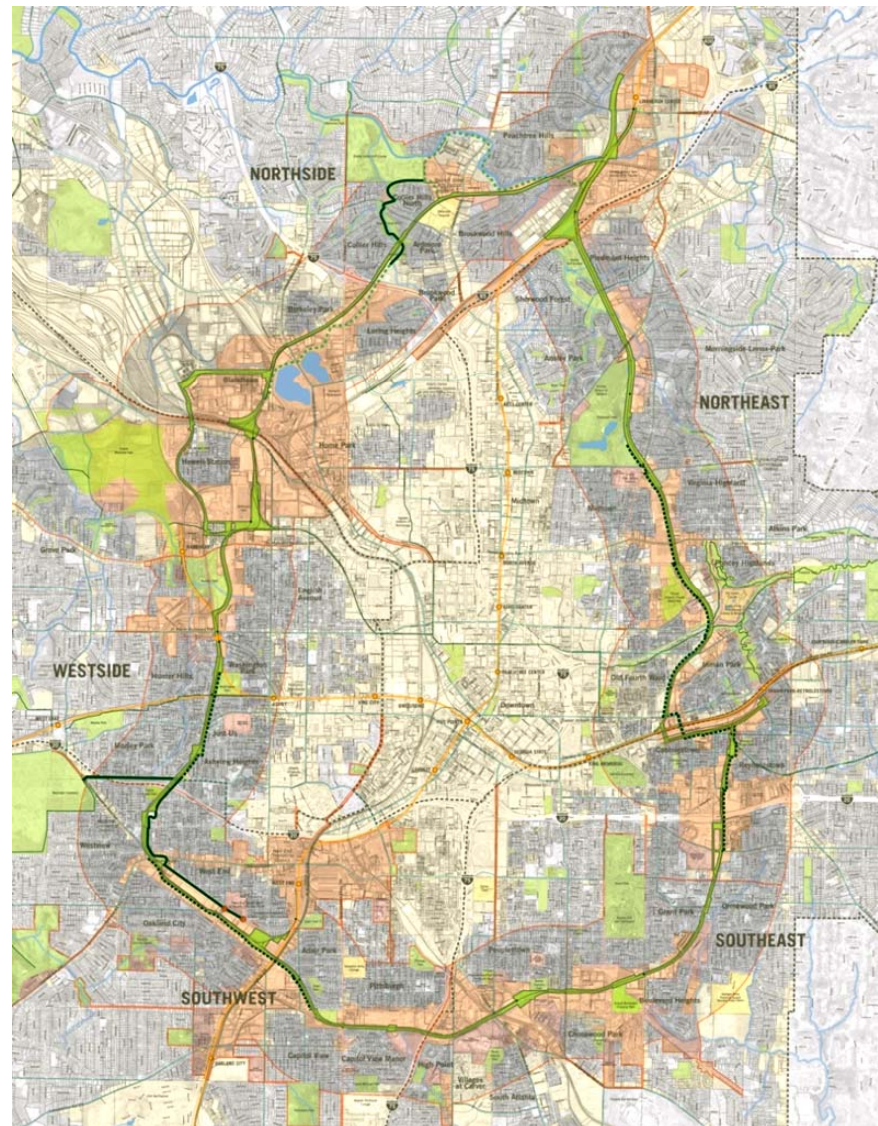
Existing Communities & Historic Preservation



Public Art & Streetscapes



Environmental Clean-up
1100 + acres



DESIGN CHARACTER OF EASTSIDE TRAIL



The Gateway

The Straight-Away

The Square

The Overlook

The Arc

The Allee



EXISTING CONDITIONS ANALYSIS



THE ALLEE – EXISTING

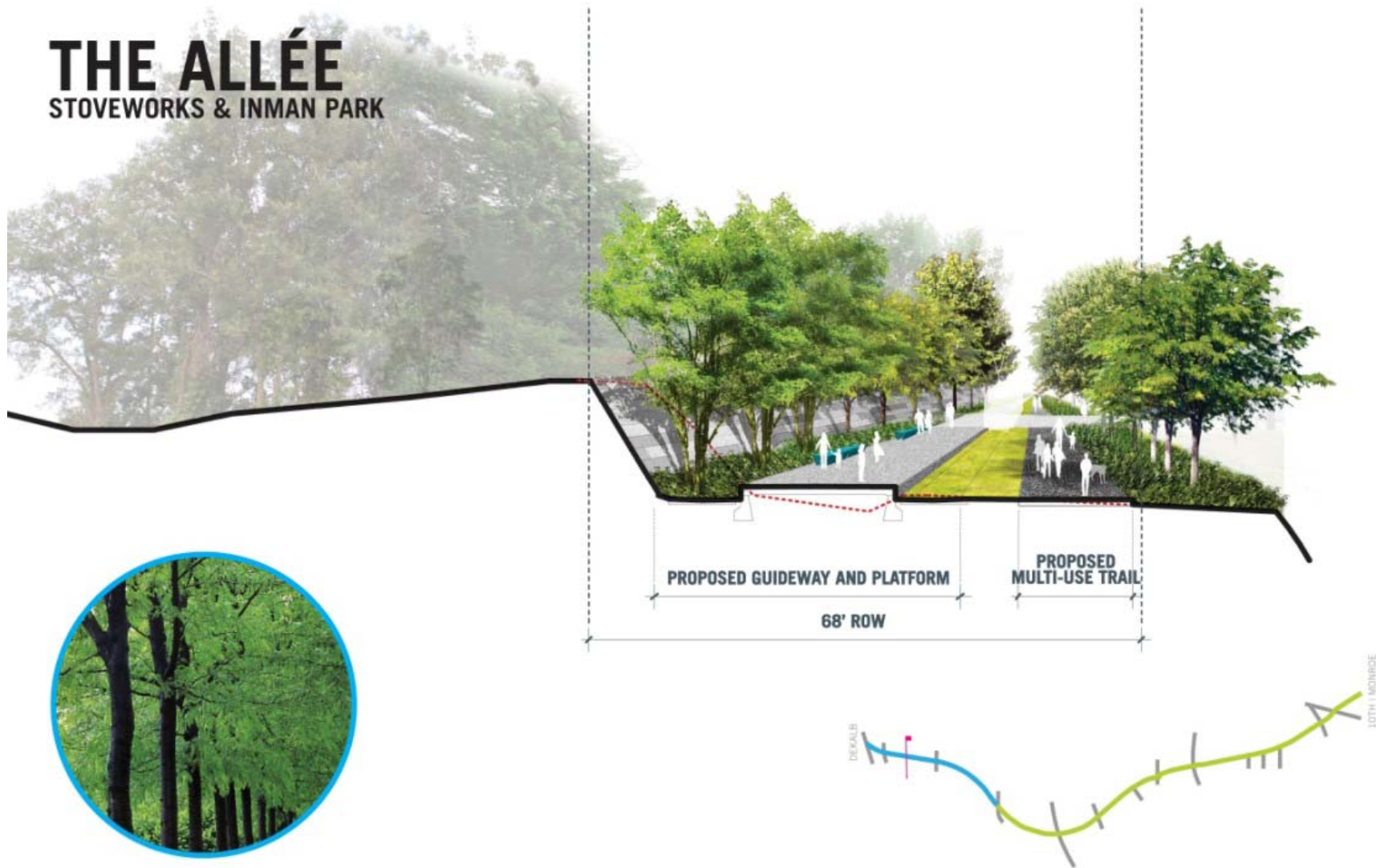


Facing south just south of Irwin Street

THE ALLÉE – DEKALB AVENUE TO HIGHLAND AVENUE



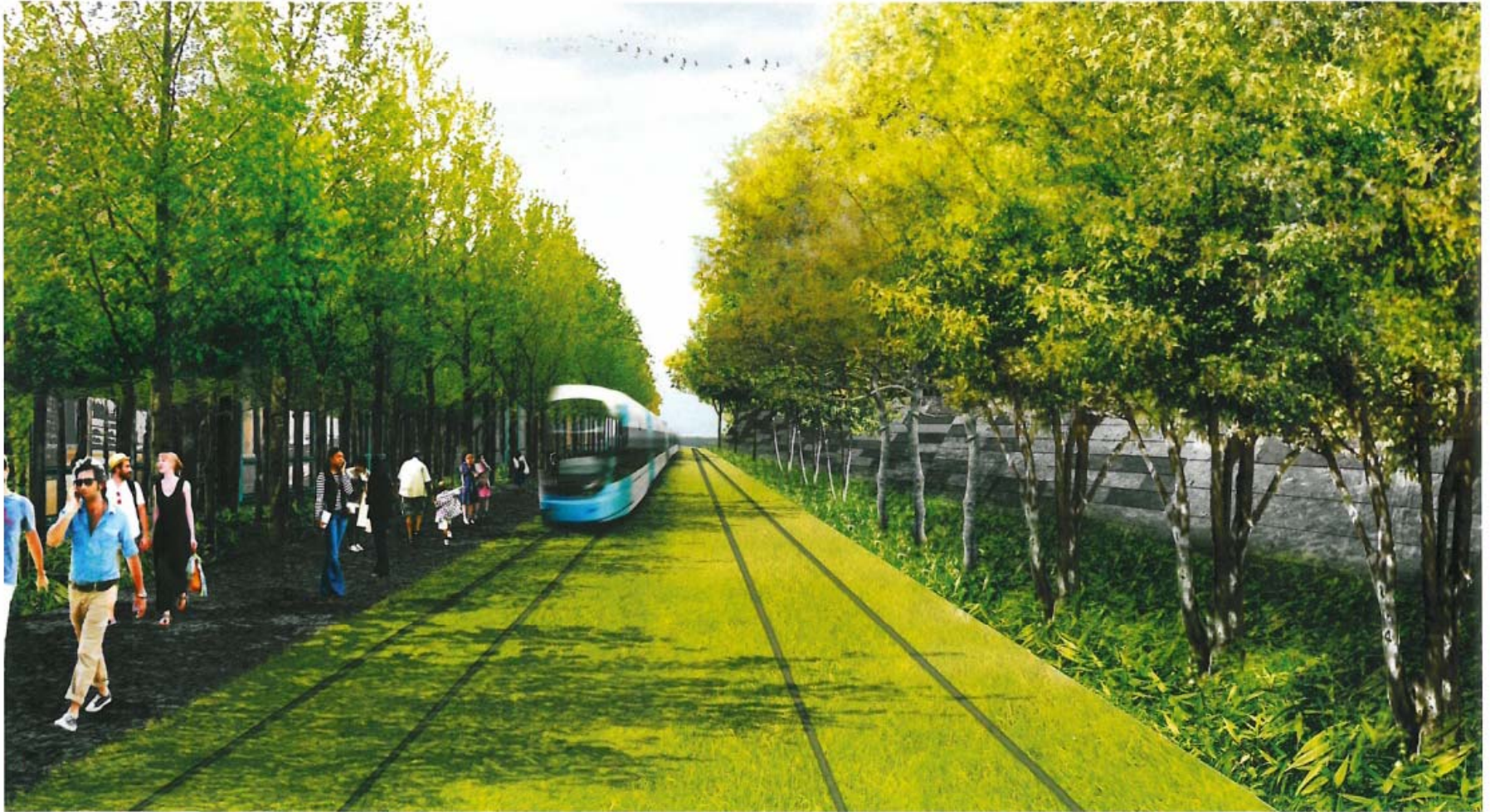
THE ALLÉE STOVEWORKS & INMAN PARK



THE ALLÉE – TRAIL DEVELOPMENT



THE ALÉE – TRAIL & TRANSIT



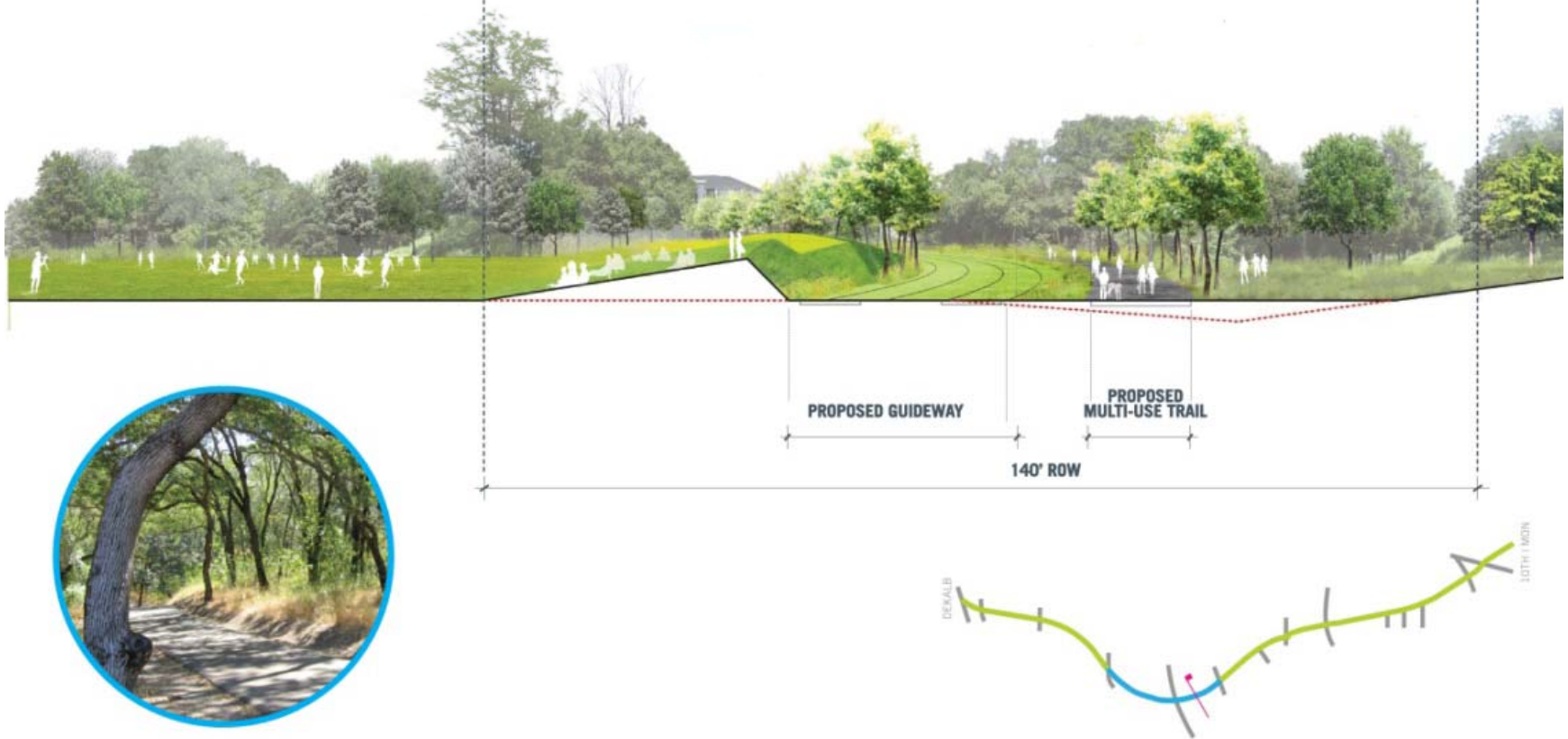
THE ARC – EXISTING



Facing north between Freedom Parkway and Ralph McGill Boulevard near Block Lofts

THE ARC – HIGHLAND AVENUE TO MCGILL BLVD

THE ARC FREEDOM PARKWAY & COPENHILL



THE ARC – TRAIL DEVELOPMENT



THE ARC – TRAIL & TRANSIT



THE OVERLOOK – EXISTING



Facing north just north of Ralph McGill Boulevard next to Historic Fourth Ward Park

THE OVERLOOK – MCGILL TO NORTH



THE OVERLOOK – TRAIL DEVELOPMENT



THE OVERLOOK – TRAIL & TRANSIT



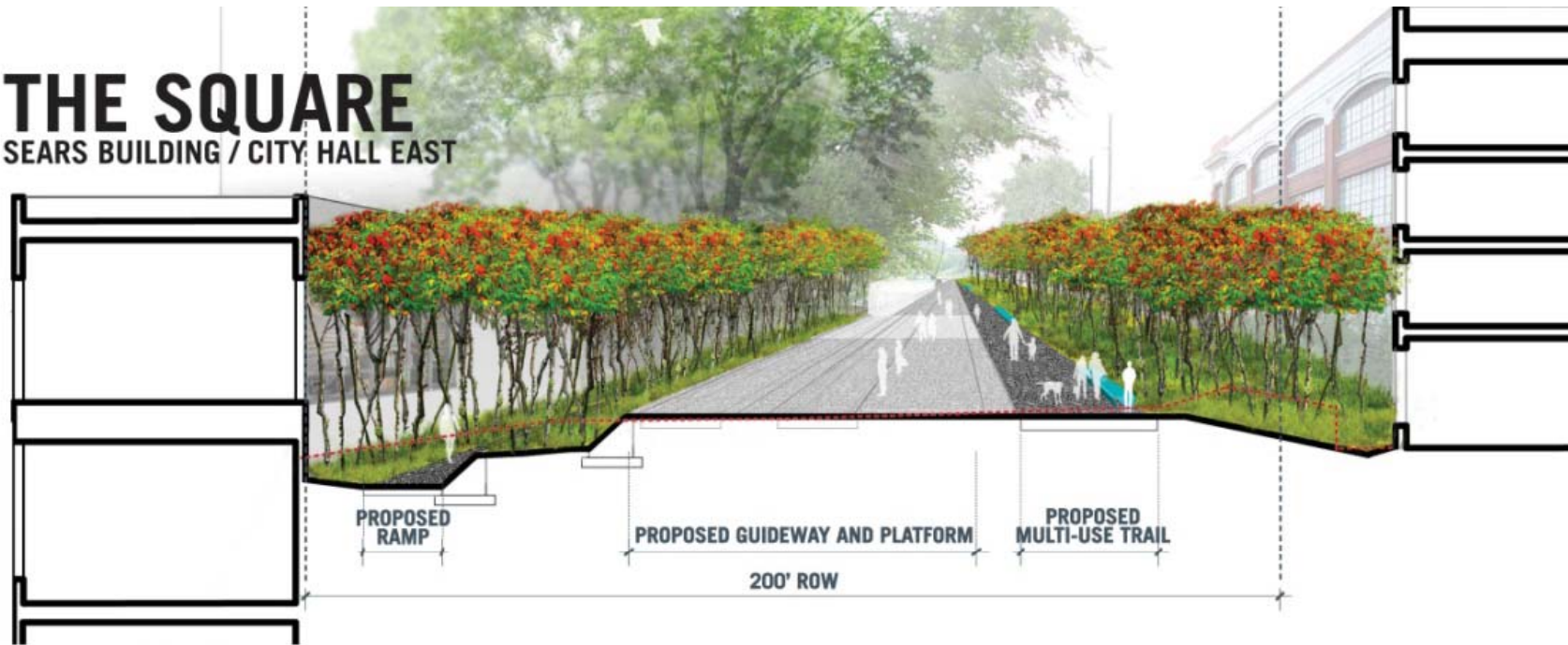
THE SQUARE – EXISTING



Facing north between City Hall East and Ford Factory Lofts

THE SQUARE – NORTH TO PONCE DE LEON

THE SQUARE SEARS BUILDING / CITY HALL EAST



THE SQUARE – TRAIL DEVELOPMENT



THE SQUARE – TRAIL & TRANSIT

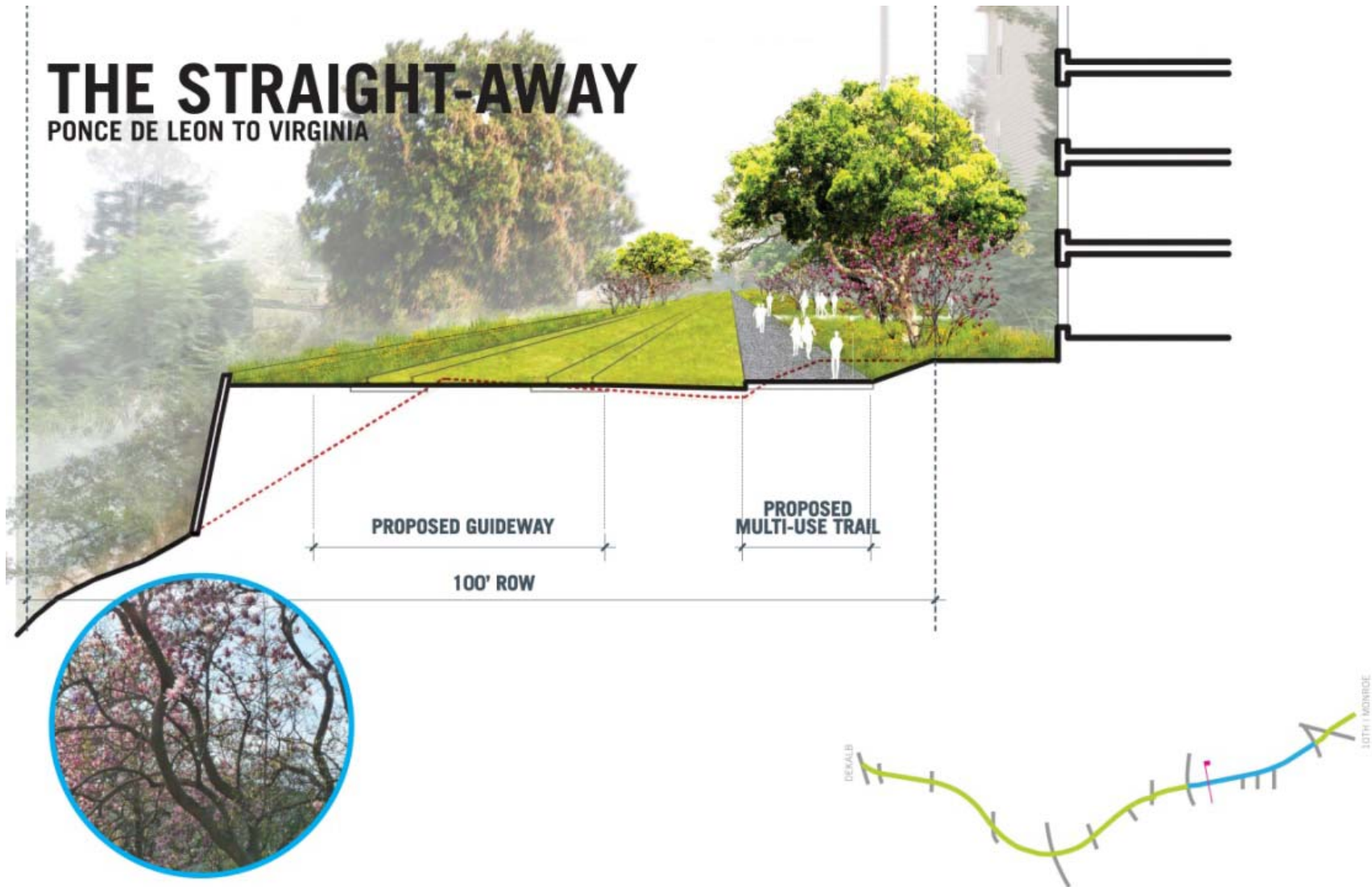


THE STRAIGHT-AWAY – EXISTING



Facing north from Ponce de Leon Avenue

THE STRAIGHT-AWAY – PONCE DE LEON TO VIRGINIA



THE STRAIGHT-AWAY – TRAIL DEVELOPMENT



THE STRAIGHT-AWAY – TRAIL & TRANSIT

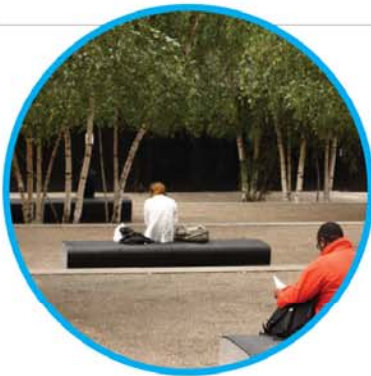


THE GATEWAY – EXISTING



Facing south from 10th and Monroe

THE GATEWAY – VIRGINIA TO 10TH/MONROE



THE GATEWAY – TRAIL DEVELOPMENT



EASTSIDE TRAIL



The Gateway

The Straight-Away

The Square

The Overlook

The Arc

The Allee

