



// Atlanta BeltLine, Inc. Update

*Quarterly Briefing
November 3, 2015*

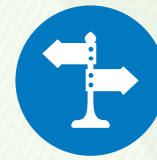
// Agenda



- Welcome
 - Vice President & Chief Operating Officer, Clyde Higgs
- Trails update
 - Westside Trail
 - Eastside Trail extension
 - Southeast Corridor design
 - Northside Trail spur
- Art on the Atlanta BeltLine update
- Arthur Langford Park
- Other updates
- Infrastructure bond projects



// Trails: Westside Trail



Atlanta
BeltLine

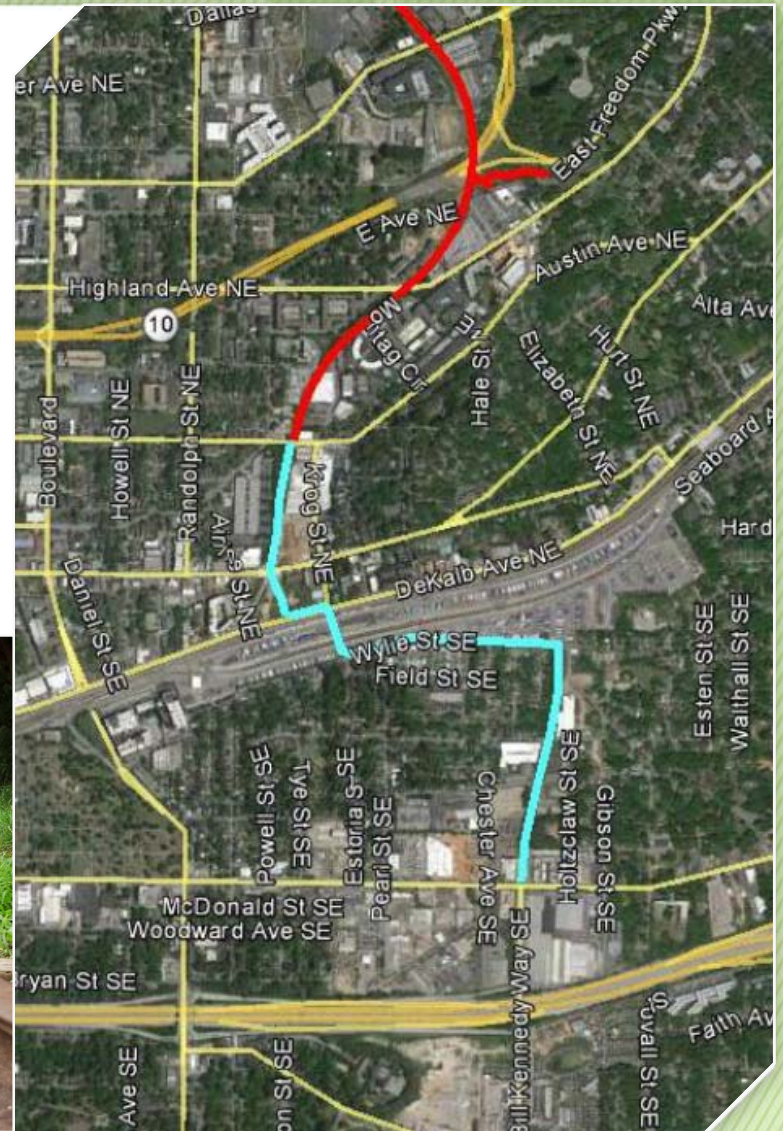
- Westside Trail construction is fully funded and underway
- 3-mile trail will connect 4 schools and 4 parks
- 14 access points
- Vertical connections
- Preparation for future transit



// Trails: Eastside Trail extension



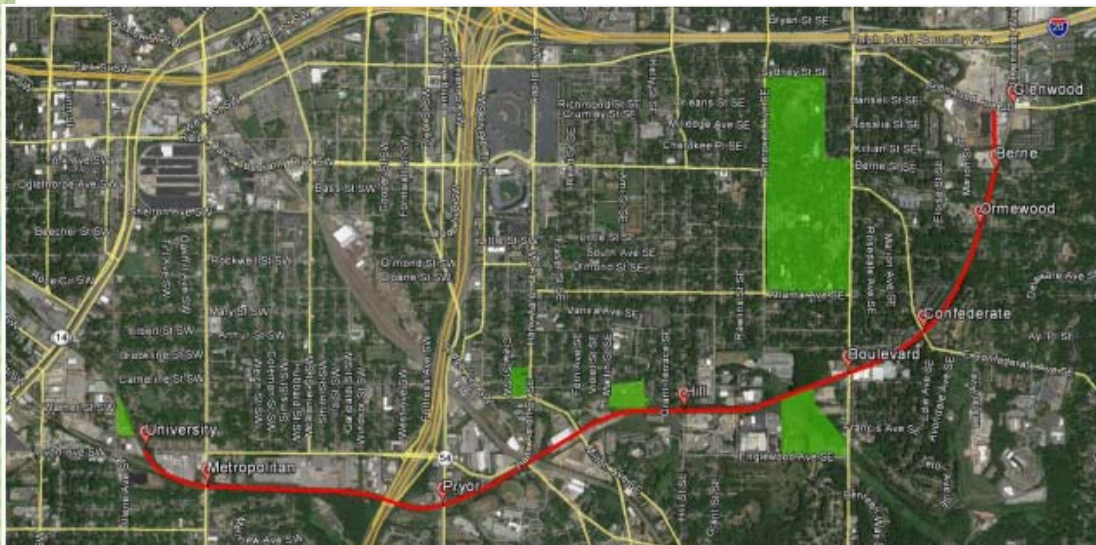
- Contractor negotiations are underway with work anticipated to start in late 2015/early 2016
- Construction completion 18 months after start



// Trails: Southeast Corridor



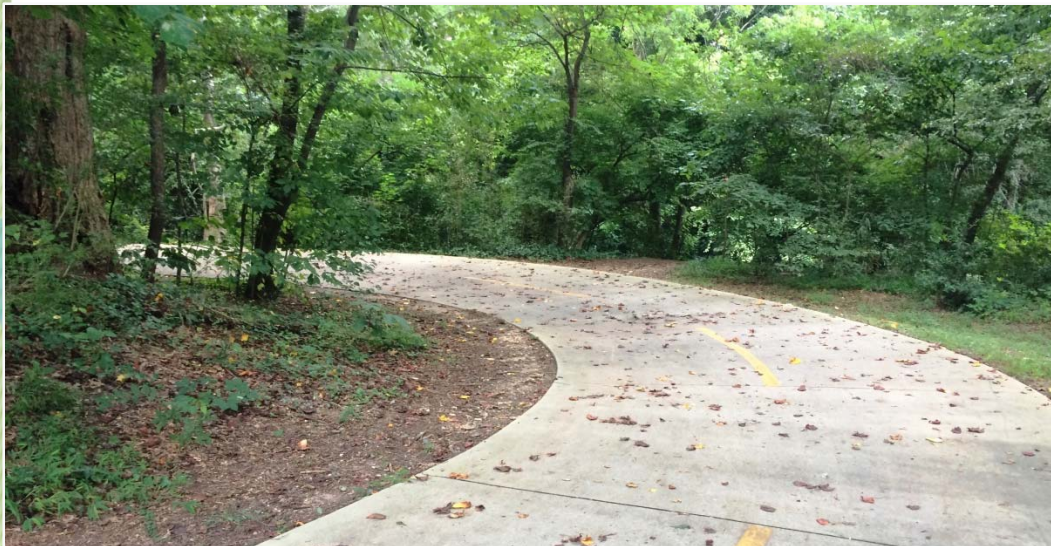
- RFQ for design & engineering due 11/12
- Includes 4-mile trail between University Ave & Memorial Dr
- Design to include lighting, retaining walls, vertical connections, storm drainage, signage/wayfinding, and bridges



// Trails: Northside Spur Trail



- PATH Foundation
- One-third mile spur
- Connects Northside Trail to Bitsy Grant Tennis Center & Northside Drive



// Art on the Atlanta BeltLine



- Year 6
- 100+ projects
- 60,000 at the Lantern Parade



// Parks: Arthur Langford Park



// Other updates: Murphy Crossing RFP



- Jobs Related Economic Feasibility Analysis of Murphy Crossing and the Surrounding Area
- Prioritized Recommendations for Short, Mid and Long Term Activation
- Neighborhood Workforce Analysis
- Analysis of economic development scenarios
- Case studies of other national models
- Framework for Site Preparation
- RFP due November 12



// Other updates: Sculpture on Eastside Trail

- Call for monumental sculpture on Eastside Trail
- Up to \$25,000 funding available from Schrager Family Foundation
- All themes will be considered
- Site at Angier Springs access, across from the Gateway
- RFP due November 16



// Other updates: Art Master Plan



- Comprehensive art master plan
- Support livable communities with increased creative activity
- Transformative potential of a linear gallery space
- Improve connectivity and access to cultural amenities
- Total \$150,000 budget
- \$50,000 from National Endowment for the Arts
- RFP to be posted mid-November



// Other updates: ABI Workday



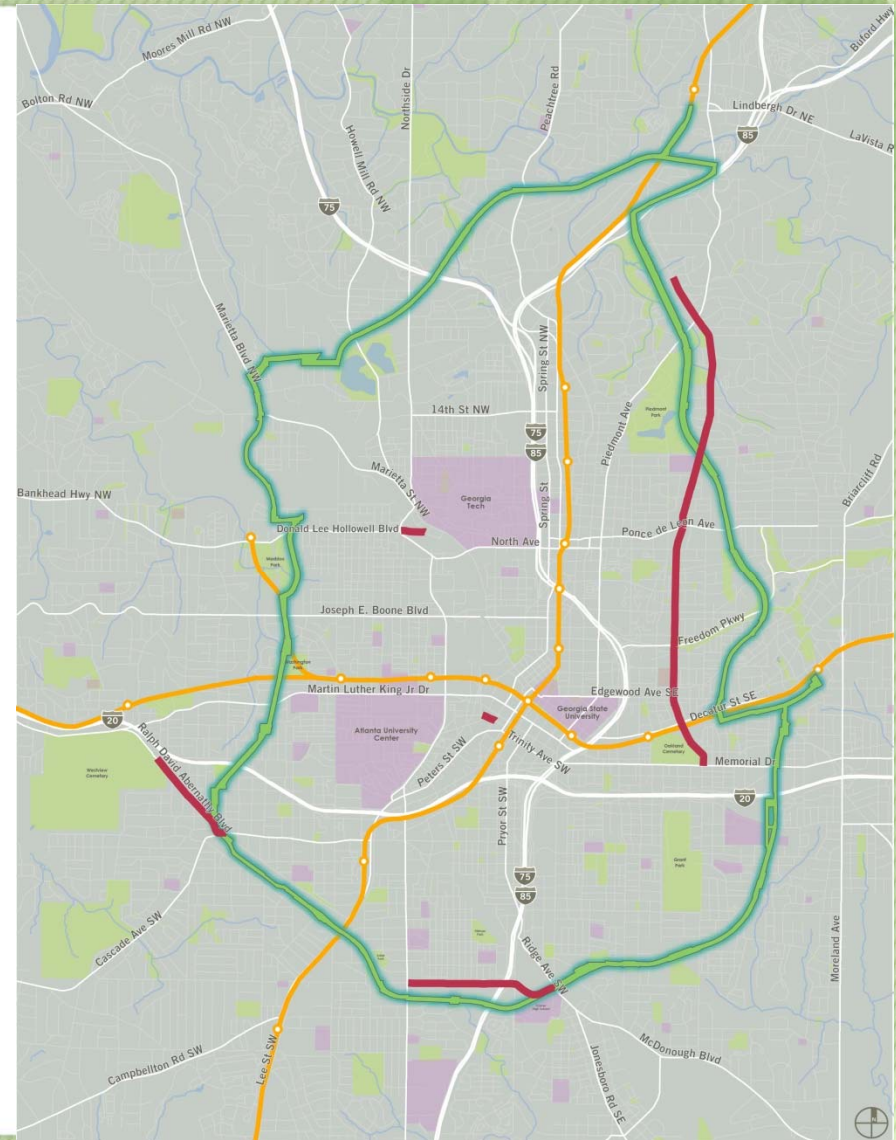
- Atlanta BeltLine, Inc. & Post Properties
- Second workday for the two organizations
- More than 100 employees volunteered
- Northeast hiking trail from Park Tavern to Evelyn Street
- Focused on cleaning trash, clearing brush & invasives
- Improved visibility between park and trail



// Infrastructure Bond Projects



- Implementation agent for city
- Project list:
 - Bankhead Avenue Bridge
 - Nelson Street Bridge
 - Monroe Drive Boulevard
 - University Avenue
 - Ralph David Abernathy Boulevard





// Atlanta BeltLine Partnership: History & Overview

Chuck Meadows
Rob Brawner

// The Partnership's Origins



- Grass roots community building
- Corporate and philanthropic leadership
- Established non-profit partners



Ryan Gravel and Cathy Woolard,
Friends of the BeltLine

Atlanta Committee for Progress



Ray Weeks, founding
Chairman of the Board



THE
TRUST
for
PUBLIC
LAND

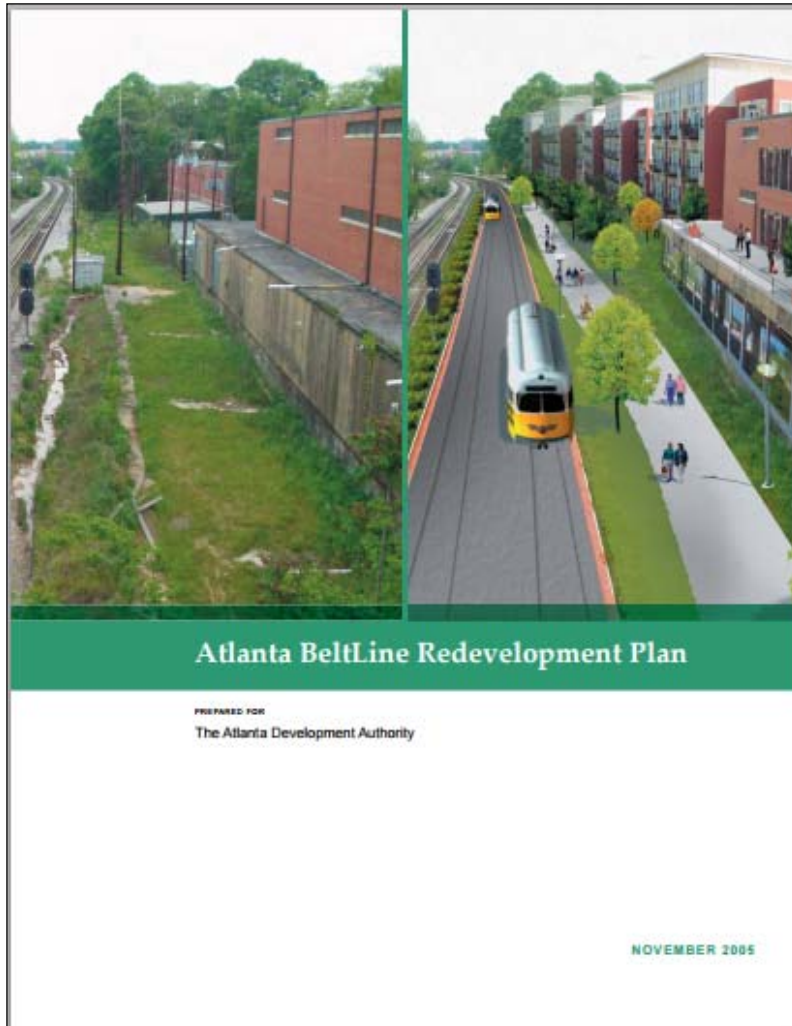


// Early Achievements



Bellwood Quarry

// Early Achievements



ADA

Atlanta Development Authority

ATLANTA BELTLINE PROJECT

Plan of Work for 2006-2010 Budget

July 5th, 2006

ATLANTA
BELTLINE
INC.

Fulfill, protect, and preserve the Atlanta BeltLine Vision by raising funds and building partnerships that enable the Atlanta BeltLine project, engage the public and empower residents in surrounding neighborhoods.

Enable the Atlanta BeltLine project

- \$54+ million raised since 2007 to support Atlanta BeltLine implementation
- \$275 million left to raise by 2030 to support completion of the Atlanta BeltLine

// The Power of Partnerships



THE JAMES M.
COX
FOUNDATION

ROBERT W. WOODRUFF
FOUNDATION

THE ARTHUR M. BLANK
FAMILY FOUNDATION



KAISER PERMANENTE®

Coca-Cola



**WELLS
FARGO**



**GEORGIA
POWER**
A SOUTHERN COMPANY



// The Three E's: Enable



- West End Trail
 - \$2.3 million philanthropic investment from capital campaign
 - Built by our partners at the PATH Foundation
 - First Atlanta BeltLine trail – located in southwest Atlanta



- Historic Fourth Ward Park and Skatepark
 - \$17.1 million philanthropic investment from capital campaign
 - Early land acquisition completed by our partners at the Trust for Public Land



// The Three E's: Enable



- Northside Trail and Southwest Atlanta BeltLine Connector
 - Facilitated dialogue with surrounding communities
 - Built by our partners at the PATH Foundation



// The Three E's: Enable



- Stanton Park and Urban Farm
 - Investment from capital campaign created park entrance and Arthur M. Blank Family Foundation funded softball field
 - \$1.7 million philanthropic investment in land for Urban Farm and State Farmers Market



// The Three E's: Enable



- Eastside Trail and Gateway
 - \$9.9 million philanthropic investment from capital campaign
 - Made the Atlanta BeltLine real for 1+ million annual users



// The Three E's: Enable



Westside Trail: \$10 million matching funds for TIGER V grant

Engage the public

- Educate people about the Atlanta BeltLine
- Activate parks and trails
- Mobilize advocates

// The Power of Partnerships



hands**on**atlanta

THE
TRUST
for
PUBLIC
LAND



// The Three E's: Engage



25,000+ have taken Atlanta BeltLine tours

// The Three E's: Engage



14,000+ volunteer hours through Adopt-the-Atlanta BeltLine

// The Three E's: Engage



11,000+ race participants

// The Three E's: Engage



7,500+ have joined free fitness classes

// The Three E's: Engage



Thousands have enjoyed our outdoor festivals

Empower residents in surrounding neighborhoods

- Health
- Housing
- Economic Opportunity

// The Power of Partnerships



Atlanta ContactPoint
empowering you to play



**DEPARTMENT OF
PARKS AND RECREATION**



KAISER PERMANENTE®



ATLANTA REGIONAL COMMISSION



**SOCCER
IN THE STREETS**
ESTABLISHED 1989



// The Three E's: Empower



Aligning dozens of partners to measure and improve health outcomes in Atlanta BeltLine communities.

// The Power of Partnerships



// The Three E's: Empower



Formed the Atlanta Land Trust Collaborative in December 2009 to create permanent affordability in Atlanta BeltLine neighborhoods

// The Power of Partnerships

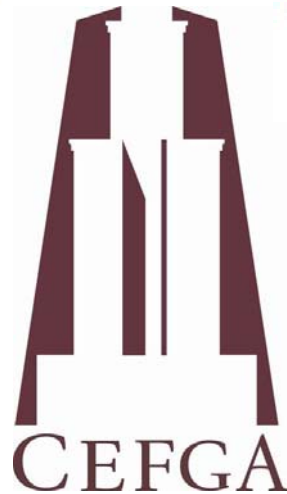


ATLANTA
CareerRise

New Hope
enterprises



ATLANTA WORKFORCE
AWDA
DEVELOPMENT AGENCY



Georgia **DOL**
DEPARTMENT OF LABOR



// The Three E's: Empower



Atlanta BeltLine Workforce Partnership in Healthcare recognized by President Obama as one of 35 model programs in the country

// The Three E's: Empower



Graduates from Westside Works are building the Westside Trail

// Join us!



See a partnership opportunity?

Contact us at:

404-446-4404

chuck@atlblp.org

Support us at: www.beltline.org/member