

# The Atlanta BeltLine

Quarterly Briefing  
September 21, 2017



@atlantabeltline



@atlantabeltline



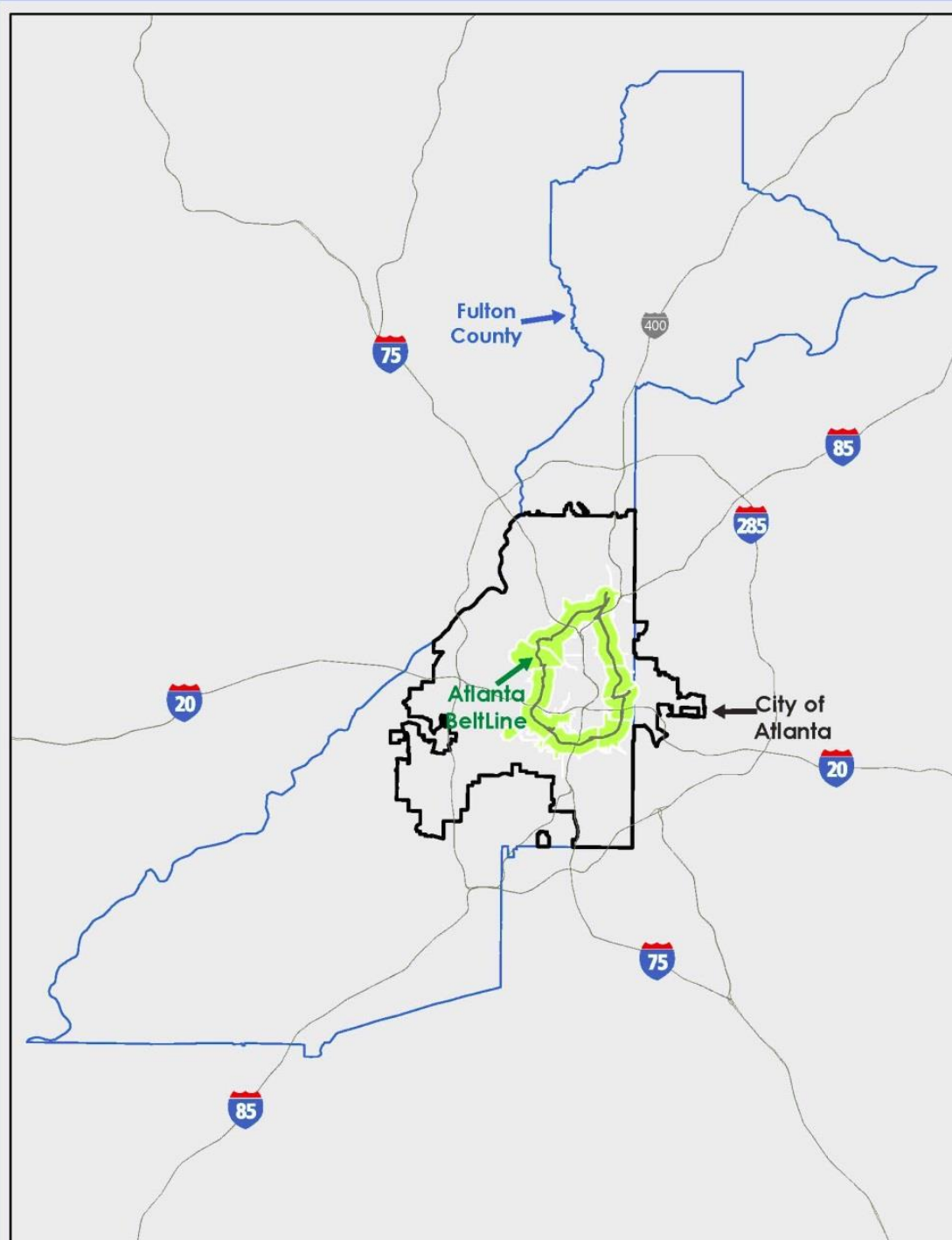
@atlantabeltline



Atlanta  
BeltLine®



- Framework for a multi-use and transit corridor in the heart of the region
- Links many of Atlanta's historical landmarks and cultural destinations
- Connects four historic rail corridors



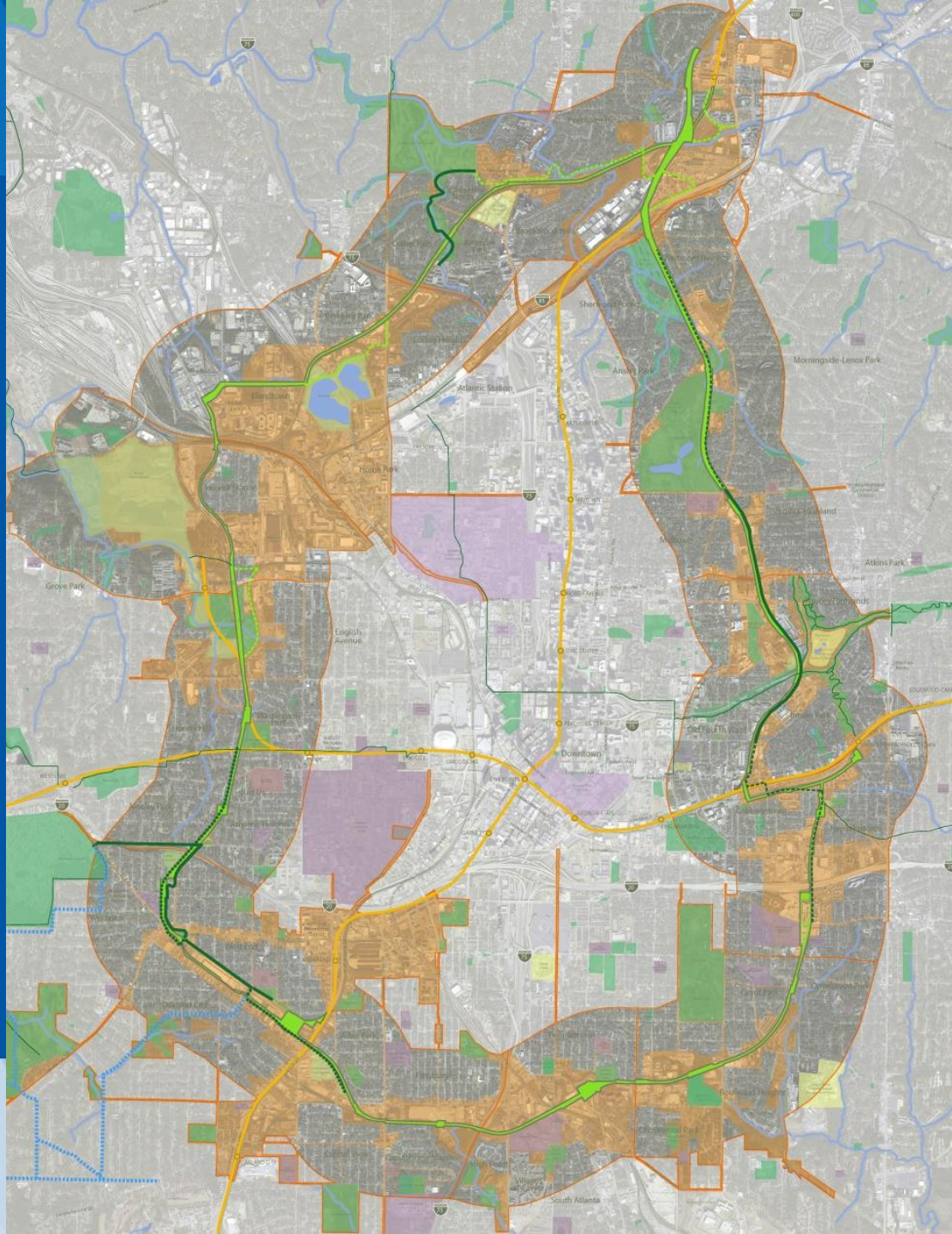


- The Atlanta BeltLine TAD

 Area: 6,500 acres

 Part of Total Planning area: 15,000 acres

- 22% of the City of Atlanta population is within the planning area
- 19% of the City's land is within the planning area





# Bringing 45 neighborhoods Together



**22**  
MILES  
of transit



**1,100**  
ACRES  
of environmental  
clean-up



**46**  
MILES  
of streetscapes and  
complete streets



**\$10-20B**  
in economic  
development  
**30,000** **48,000**  
permanent construction  
jobs jobs



**33**  
MILES  
of urban trails



**28,000**  
new housing units  
**5,600**  
affordable units



**1,300**  
ACRES  
of new greenspace  
**700**  
ACRES  
of renovated greenspace

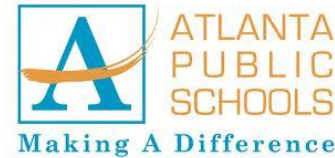


**CORRIDOR-  
WIDE**  
public art,  
historic preservation,  
and arboretum



# Organizational Structure

*Project Sponsors*



*Public  
Redevelopment Authority  
(TAD oversight)*



*Private  
Non-profit Redevelopment  
Corporation  
(Implementation Agent)*



*Private Non-profit  
501c3 Partner*



# Strategic Partnerships





# Trails Update



*Westside Trail at White Street*



# Allene Avenue



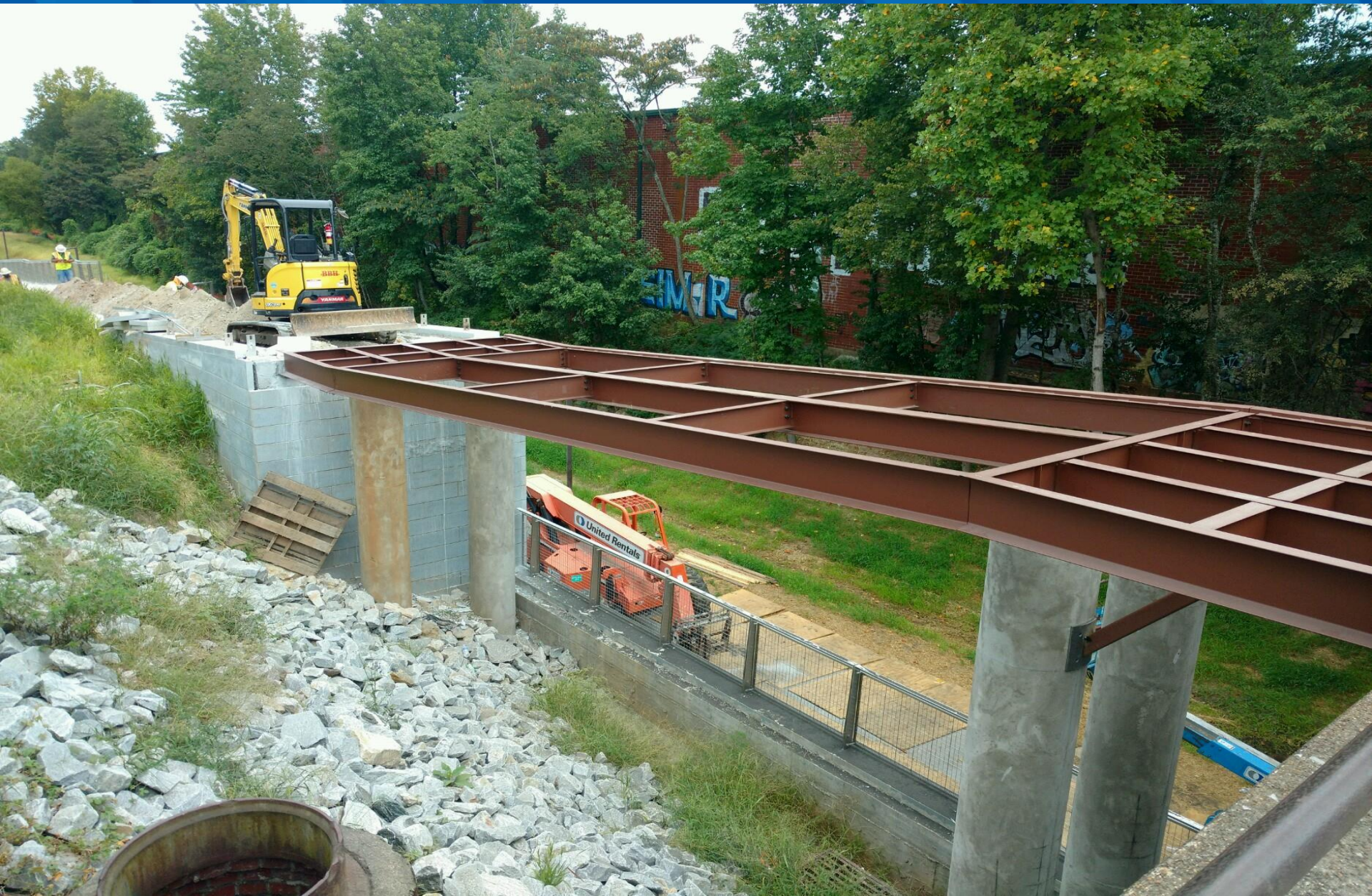


# Lawton Street





# Lee Street Bridge





# MLK North Sidewalk



# Irwin to Edgewood



- Installing of landscape ongoing
- Lights, final punchlist items, and cameras expected by to be completed early Fall





# Kirkwood Ave.



- Temporary road crossing in place with Rapid Flashing Beacons in early Fall



Atlanta  
BeltLine®

# Design Update



*Bike riders on  
North Avenue Bridge*



# Enota Park Design

- 8 acre parcel between Lucile Ave. and I-20
- RFP for design posted today
- National Park Service awarded \$600,000 toward the construction of the active recreation area



# Planning Update



Atlanta  
BeltLine®

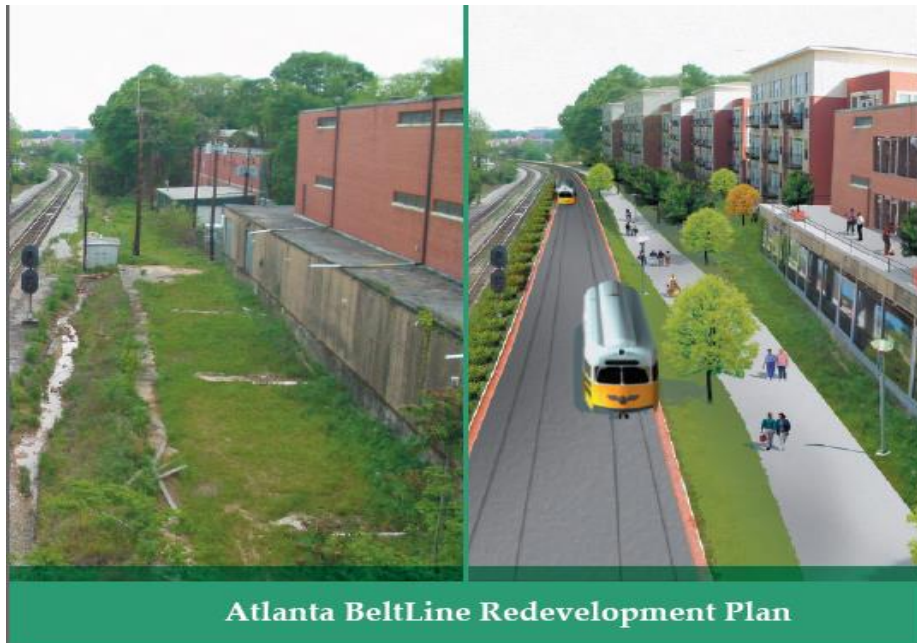
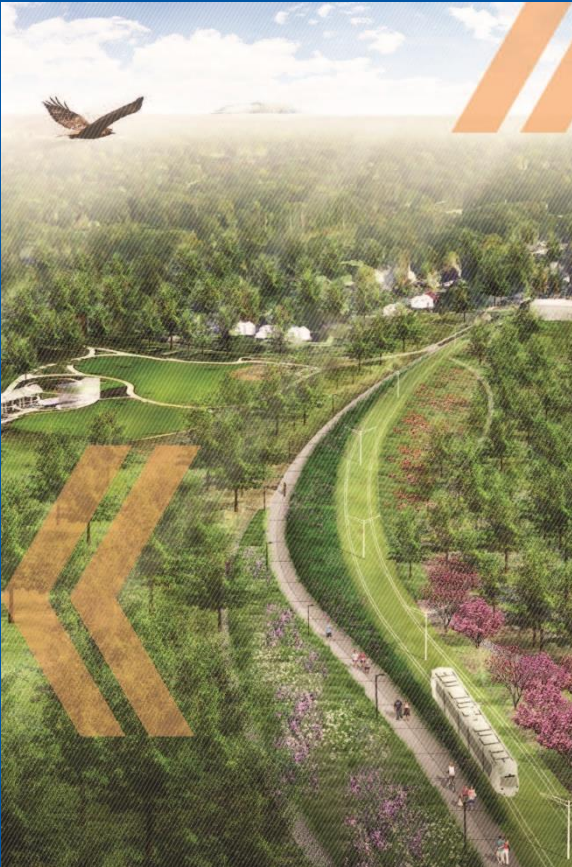


*Quarterly Briefing June 2017*



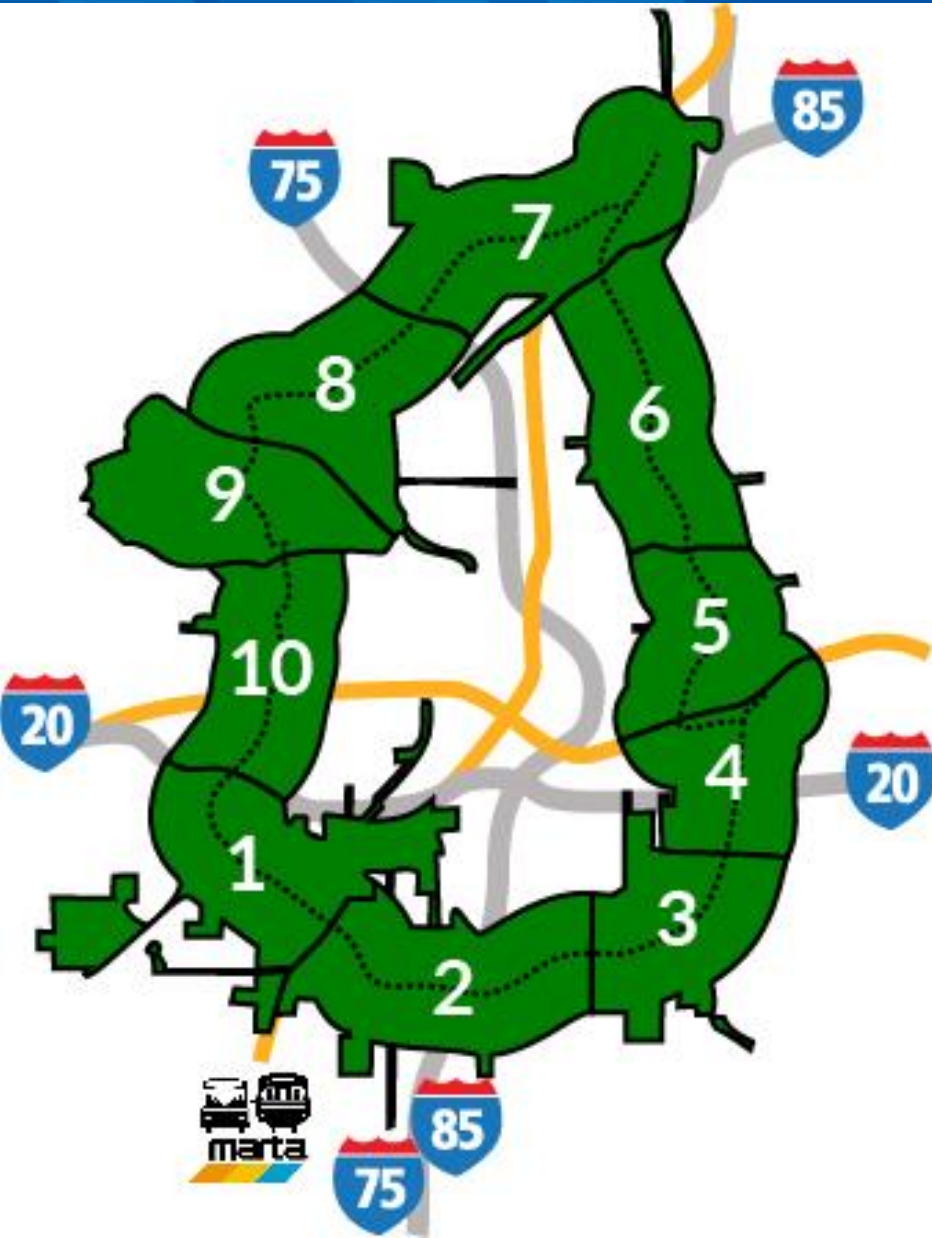
# Subarea Master Plan

- Subarea plans adopted between 2009-2012
- Goal - To implement the Redevelopment Plan goals in the context of each unique geographic area
- Purpose – To guide growth for vibrant, livable mixed-use communities by applying best management practices for transit oriented development, mobility, green space, and alternative modes of transportation.





# Master Plan Update Schedule



- Multi-year effort by ABI with support of Consultants
- (Draft) Schedule
  - Phase 1: 2, 3, 10 (2017)
  - Phase 2: 1, 8, 9 (2018)
  - Phase 3: 4, 5, 7 (2019)
  - Phase 4: 6 (2020)

Phase 1	Phase 2	Phase 3	Phase 4
2017	2018	2019	2020
SA – 2	SA - 1	SA – 5	SA – 6
SA – 3	SA – 8	SA – 7	
SA - 10	SA – 9	SA - 4	

# Art on the Atlanta BeltLine



- September – November
- Largest public art display in Atlanta's history
- Biggest temporary public art exhibition in the South
- Hundreds of artists including muralists, sculptors, craftspeople, photographers, performers and musicians





# Art on the Atlanta BeltLine



- Eighth year of exhibition
- Grown more than 50% since inception
- 70,000+ attendance at annual Lantern Parade





# Art on the Atlanta BeltLine



- Performance series showcases local, national, international talent
- Variety of disciplines: improvisational theatre to opera, from traditional African dance to circus arts and everything in between!





# Art on the Atlanta BeltLine



September 23-24:  
Gordon White  
Park

- Saturday @ 2 p.m.
- Sunday @ 4 p.m.

See brochure for lineup!





# Art on the Atlanta BeltLine



October 7-8:  
Historic Fourth  
Ward Park

- Saturday @ 1:15 p.m.
- Sunday @ 2 p.m.

See brochure for lineup!





# Art on the Atlanta BeltLine



- Exhibition Firsts:
  - Tiny Doors on Westside Trail
  - Andrew Catanese
  - Yasin Jalal





# Northeast Interim Hiking Trail





# Eastside Trail





# Westside Trail





# Westside Trail





# Westside Trail





# Westside Trail





# Westside Trail





# Art on the Atlanta BeltLine



Community  
Conversation:

Art Placed on  
bridge over  
Martin Luther  
King Jr. Drive





# Art on the Atlanta BeltLine



- What went Wrong?

1. Art work placed on the MLK Bridge was racially insensitive
2. Need for more diversity on the selection panel for Art on the Atlanta BeltLine
3. No one from Atlanta BeltLine “eye-balled” the piece prior to or after installation
4. Delegated the review and selection of panels for this particular piece to another art group



# Art on the Atlanta BeltLine



- What we heard from you so far...
- Include representation from NPU's as a part of the art selections.
- Improve outreach to African American artist with a focused search to invest and curate Atlanta African American artist.
- Consider sponsoring an Art Contest for all Atlanta Westside schools connected to the Westside Trail.
- Featured artist could do workshops with the students as well as supporting the schools' art program. The students artwork would be displayed at the schools at an event to celebrate community sponsored by the Atlanta Beltline.





# Art on the Atlanta BeltLine

- We are still listening.

- Friday, September 8<sup>th</sup> – Community & Stakeholders Meeting
- Thursday, September 21<sup>st</sup> – Third Quarterly Briefing of 2017
- Thursday, September 28<sup>th</sup> – AoAB Listening Session
  - 7:00 pm – 8:00 pm
  - KIPP STRIVE Primary – Multipurpose Room
  - 1425 Ralph David Abernathy Blvd SW
  - Atlanta, GA 30310
- ABI will review and internally discuss what has been heard and will return to the community to report out on procedural changes and inform the community what those changes might be, and receive reactions to that.



# Thank you!



*The future Southside Trail*



@AtlantaBeltLine // [engage@atlbeltline.org](mailto:engage@atlbeltline.org)



# The Atlanta BeltLine Partnership

Quarterly Briefing  
September 21, 2017

## Westside Program Highlights



@atlantabeltline  
@atlantabeltlinepartnership



@atlantabeltline



@atlantabeltline

Atlanta  
BeltLine  
Partnership



Atlanta  
BeltLine





# Atlanta BeltLine Partnership

- **Enable** the Project
- **Engage** the Public
- **Empower** the Residents





# Engage the Public

## Official Atlanta BeltLine Tours

- Bus Tours
    - IHG-sponsored tours
  - Bike Tours
  - Walking Tours
    - Coming soon to the Westside Trail
- [BeltLine.org/Tours](http://BeltLine.org/Tours)

**IHG**<sup>®</sup>  
Foundation



**TREES**  
**ATLANTA**

Atlanta  
BeltLine  
Partnership



**Atlanta  
BeltLine**





# Engage the Public

## Run.Walk.Go! Race Series

- Record participation (800+) for July 15 Westside 5K
  - Eastside 10K on December 2
    - Early bird registration available through June 15
- [BeltLine.org/Races](http://BeltLine.org/Races)



Atlanta  
BeltLine  
Partnership



Atlanta  
BeltLine®



# Engage the Public

## Boulevard Crossing Park Play Day

- Trained coaches provide instruction across a variety of sports and activities
- Free fitness classes and demonstrations
- Healthy eating options
- Games, music and more
- Sat., Sept. 29, 2-6 pm
- [BeltLine.org/PlayDay](http://BeltLine.org/PlayDay)





# Empower the Residents

## Equitable Development & Affordable Housing

- Free homeowner empowerment workshops
  - Next workshop: Tues., Oct. 17, 6:30-8:30 pm at Habitat for Humanity
- Resource guide for existing homeowners
- The Power of “We” Thought Leadership series in Saporta Report
- [BeltLine.org/Homeowner-Empowerment-Workshops](http://BeltLine.org/Homeowner-Empowerment-Workshops)



Atlanta  
BeltLine  
Partnership



Atlanta  
BeltLine®





# Empower the Residents

## Developing Solutions to the Affordable Housing Challenge

- Implementing these solutions will require broad, sustained partnerships between the private sector, philanthropy, government, policy makers, and local citizens

### **Best practices from other cities include:**

1. Responsibility, measurement, and accountability for a city-wide housing strategy
2. Prioritizing long-term affordability and preserving existing affordability
3. Sustained and predictable funding
4. Policies that require new residential developments to allocate a certain percentage of units to affordable housing.
5. Anti-displacement tools (e.g. property tax relief and owner-occupied rehab and anti-eviction support)



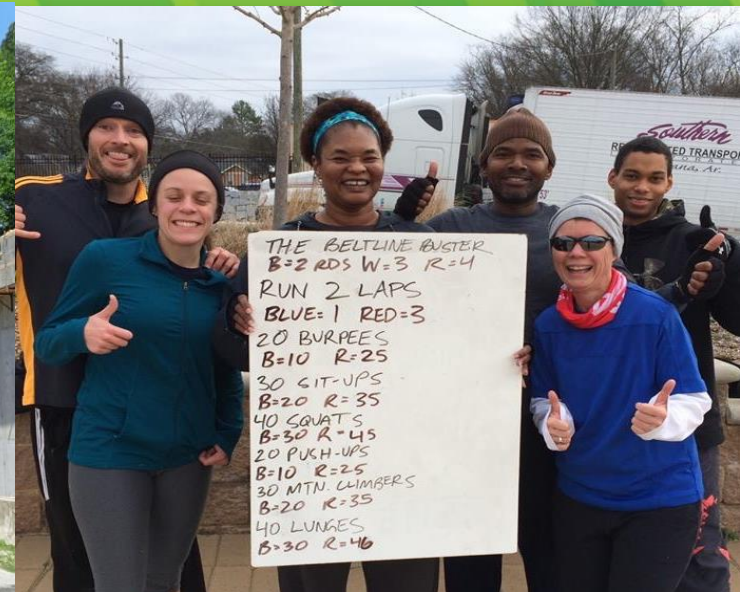


# Empower the Residents

## Improving Health Outcomes

- Westside Trail Community Health Grant Program
- \$500K investment by **Kaiser Permanente** to support health programming along Westside Trail
- Grantees to be announced at Sept. 29 Westside Trail ribbon-cutting event
- Developed in partnership with a community advisory group

➤ [BeltLine.org/Healthgrants](https://BeltLine.org/Healthgrants)





Thank you! Please stop by our table!



info@atlblp.org // 404-446-4404