

The Atlanta BeltLine

Quarterly Briefing
September 26, 2016



@atlantabeltline



@atlantabeltline



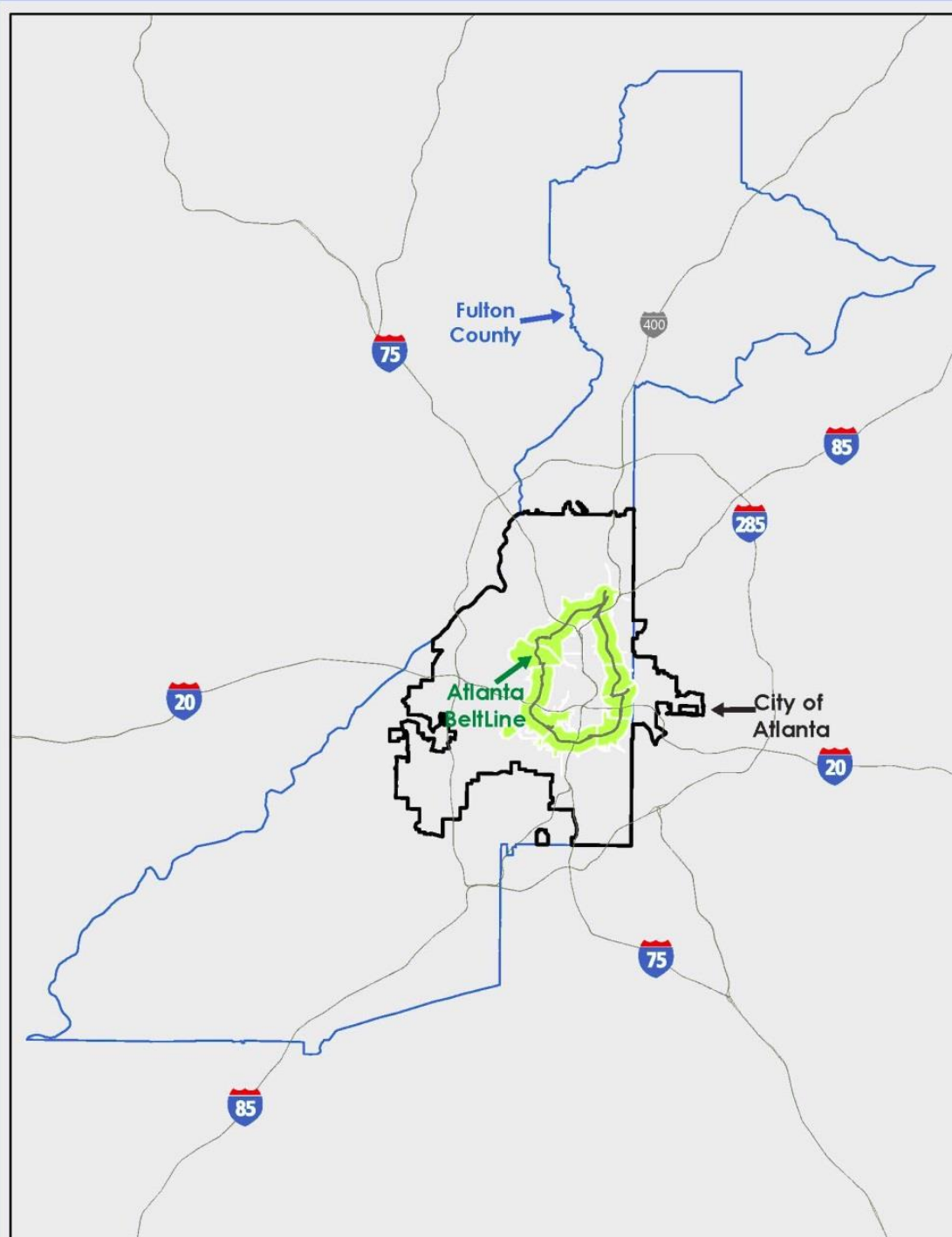
@atlantabeltline



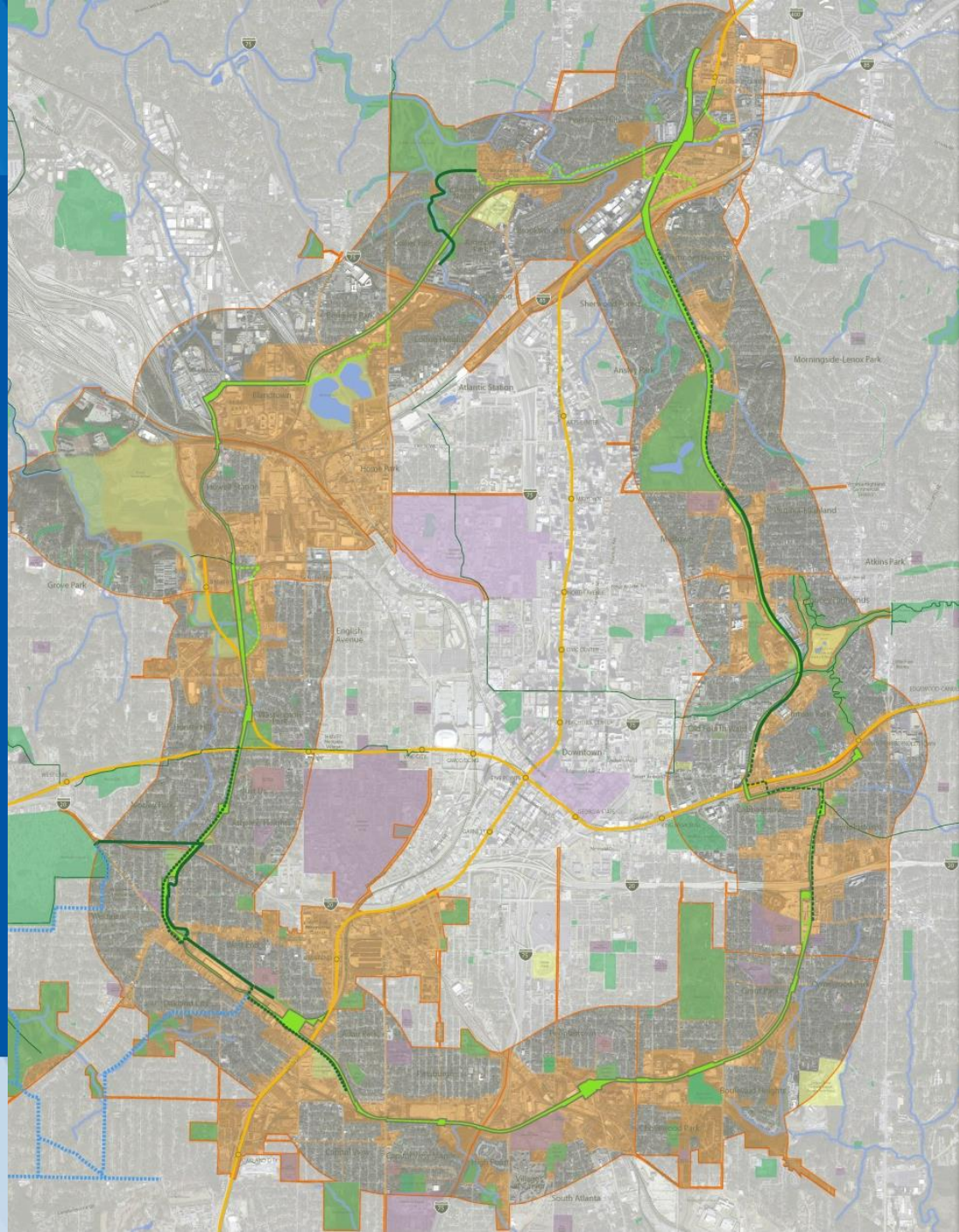
Atlanta
BeltLine®



- Framework for a multi-use and transit corridor in the heart of the region
- Links many of Atlanta's historical landmarks and cultural destinations
- Connects four historic rail corridors



- Unites 45 neighborhoods
- 15,000 acre Planning Area includes:
 - One-mile wide area
 - 6,500 acre TAD
 - 22% of the City of Atlanta population
 - 19% of the City's land



22 miles, connecting 45 neighborhoods



22
MILES
of transit



1,100
ACRES
of environmental
clean-up



46
MILES
of streetscapes and
complete streets



\$10-20B
in economic
development
30,000 permanent
jobs **48,000** construction
jobs



33
MILES
of urban trails



28,000
new housing units
5,600
affordable units



1,300
ACRES
of new greenspace
700
ACRES
of renovated greenspace



**CORRIDOR-
WIDE**
public art,
historic preservation,
and arboretum

Organizational Structure



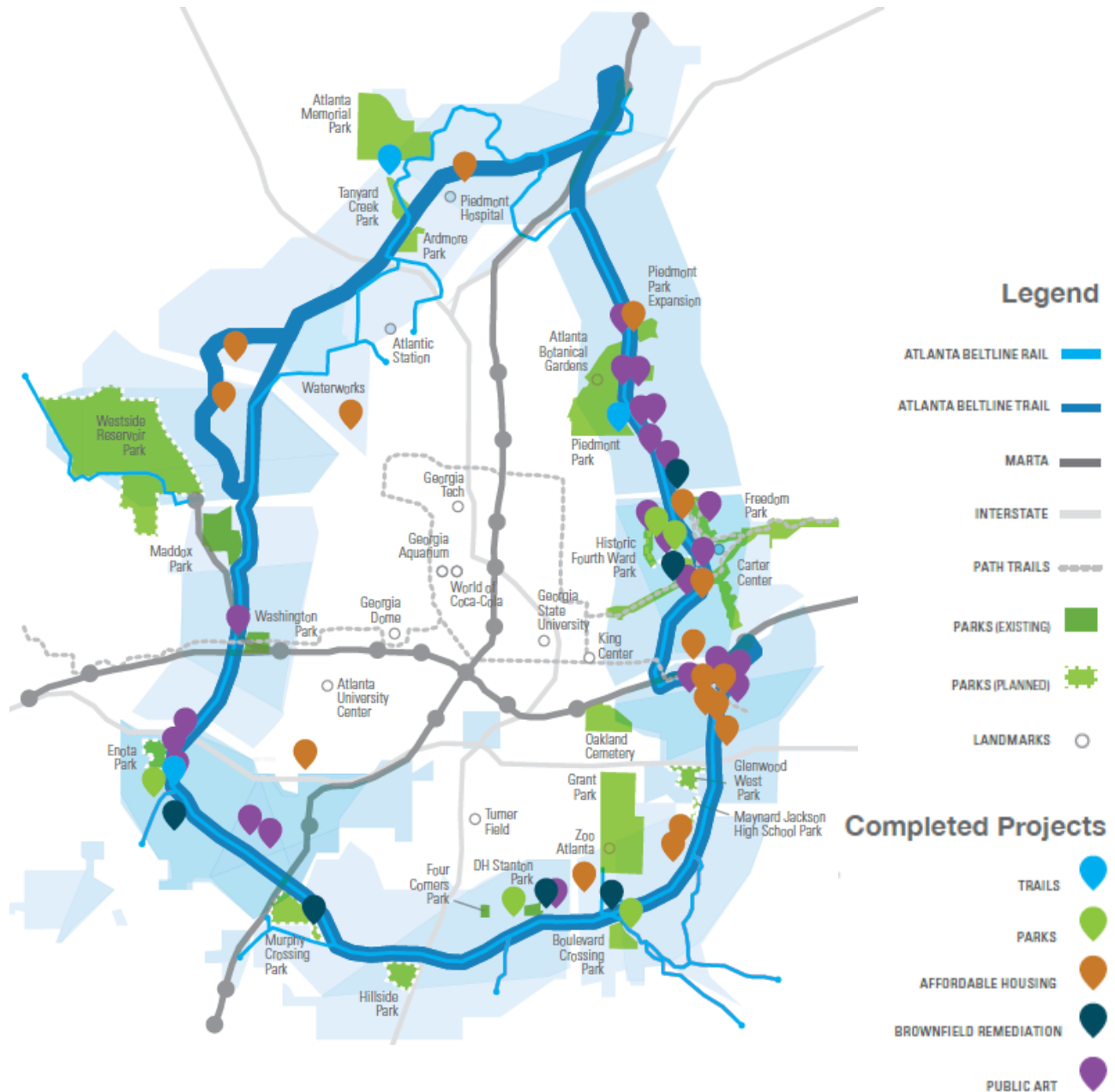
Strategic Partnerships



ATLANTA REGIONAL COMMISSION



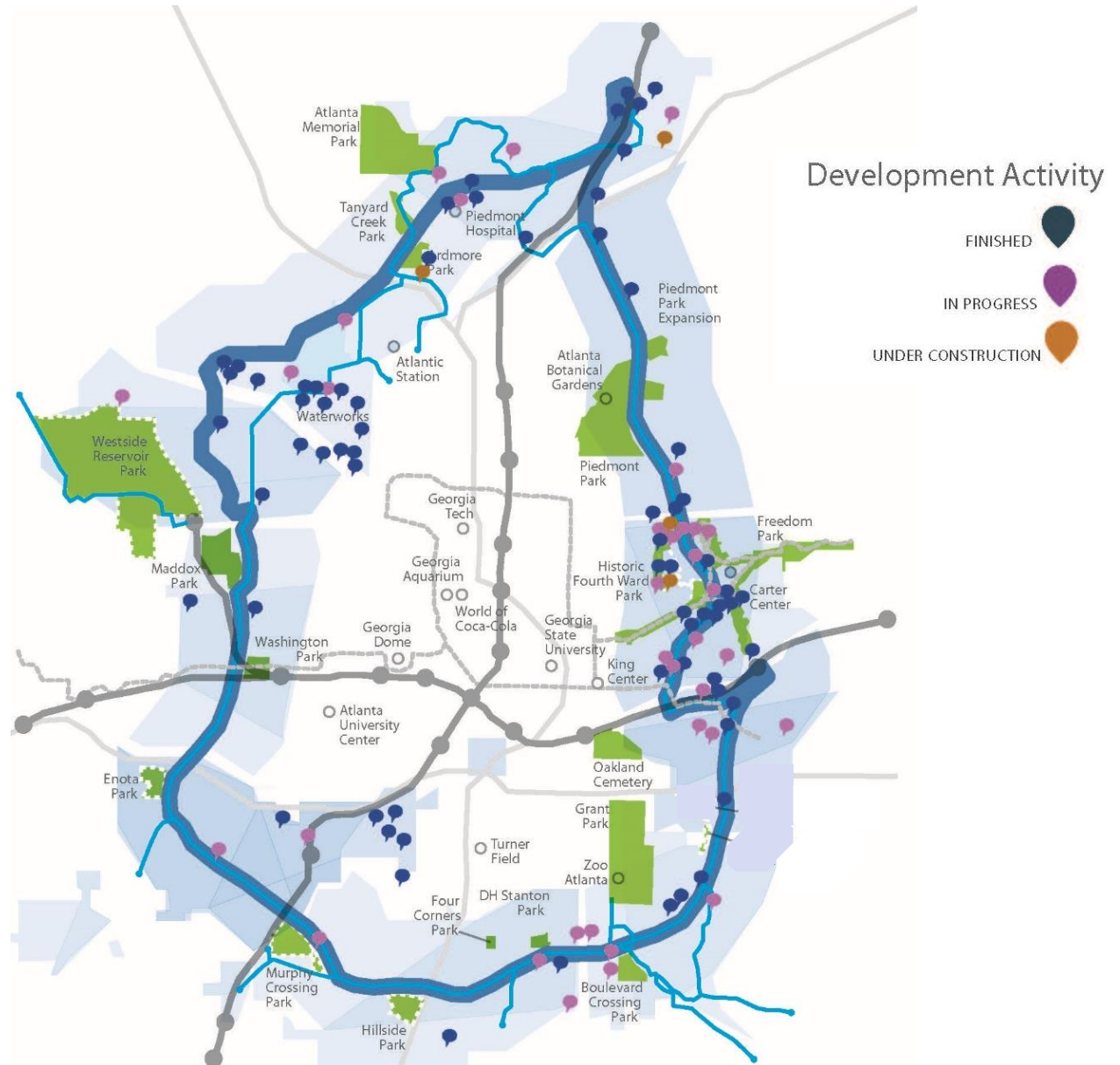
Total
investment
to date:
\$449 million



Private development is following public/private investment:

- Over 110 projects complete or underway within Planning Area* valued at over \$3 billion
- 15,483 new residential units completed
- Nearly 2 million SF of new commercial space completed
- Roughly 7 to 1 return on investment through 2015

** Projects larger than 10 dwelling units or 10,000 square feet*



MARTA Sales Tax Referendum



Atlanta BeltLine Quarterly Meeting
September 26, 2016

MARTA Sales Tax

- Purpose is to significantly expand MARTA transit service
- Receipts projected at \$2.5 billion (2016\$) over life of the tax
- Project list approved
 - MARTA Board of Directors (May)
 - City of Atlanta City Council (June)
- Referendum on November 8

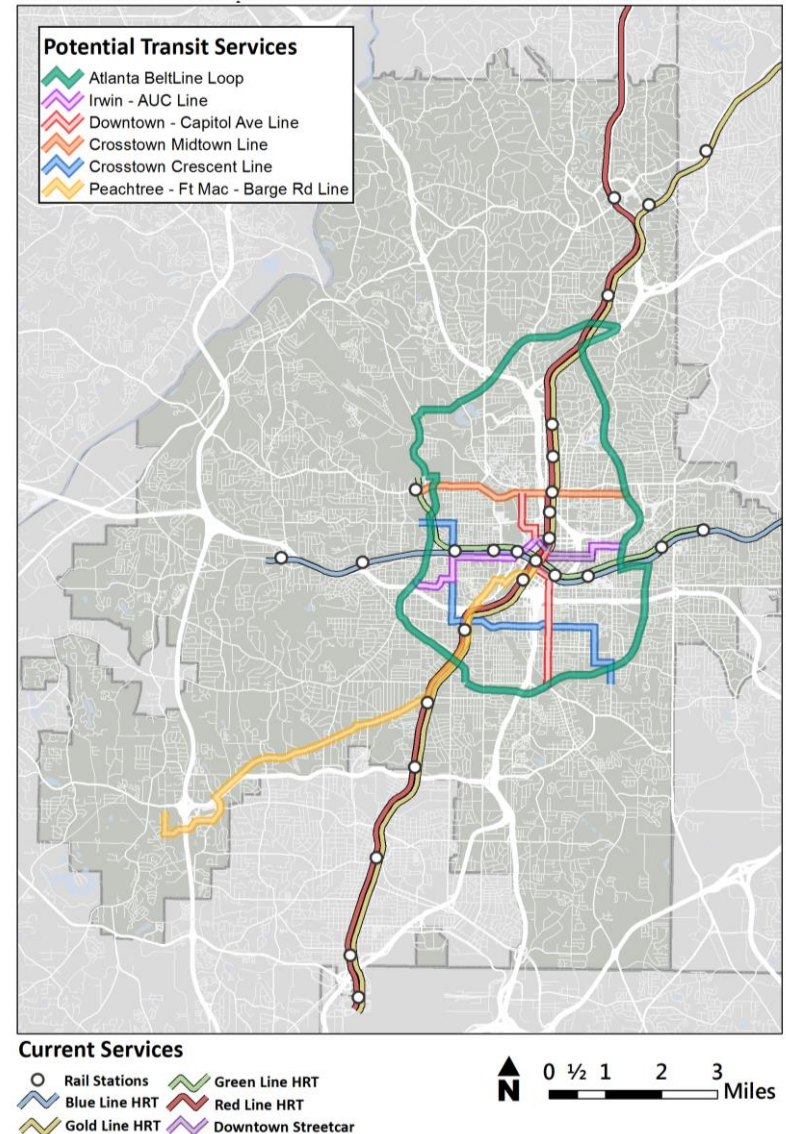


Potential High Capacity Improvements

■ City of Atlanta

Light Rail Transit

- Atlanta BeltLine Loop
- Irwin – AUC Line
- Downtown – Capitol Ave Line
- Crosstown Midtown Line
- Crosstown Crescent Line
- Peachtree – Ft Mac – Barge Rd Line
- “S” Concept – Murphy Crossing – Armour Yard via AUC and Eastside Trail

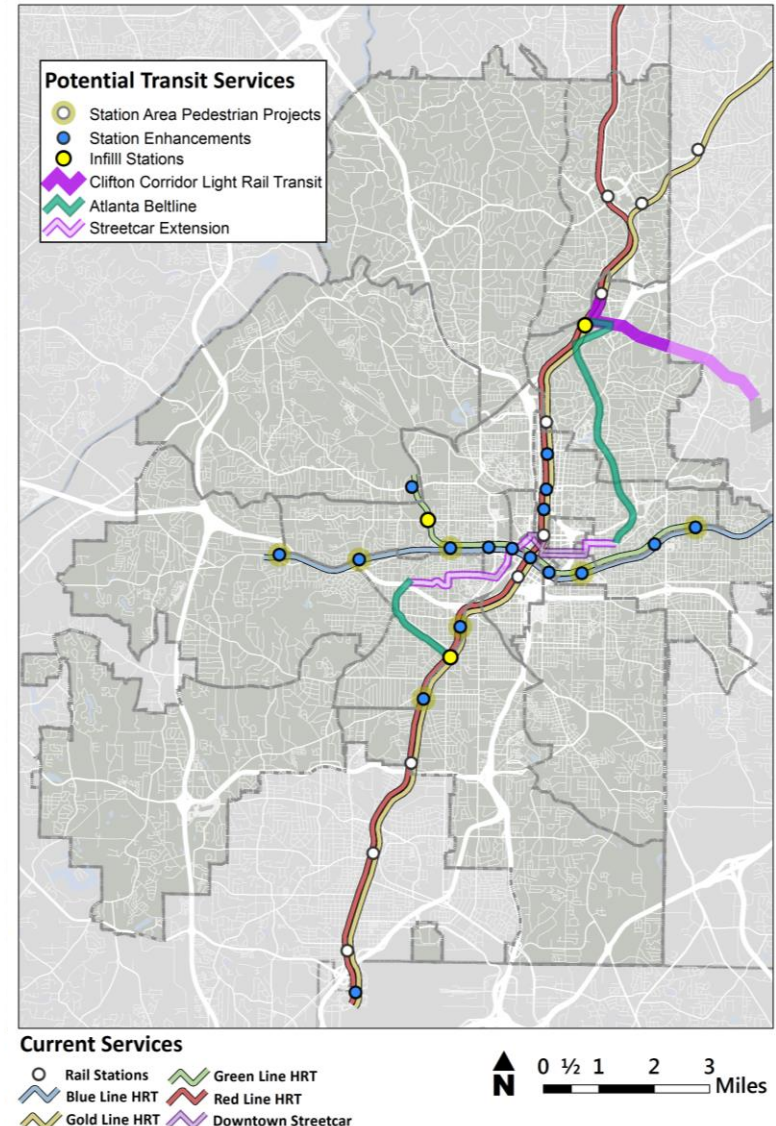


Potential High Capacity Improvements

City of Atlanta

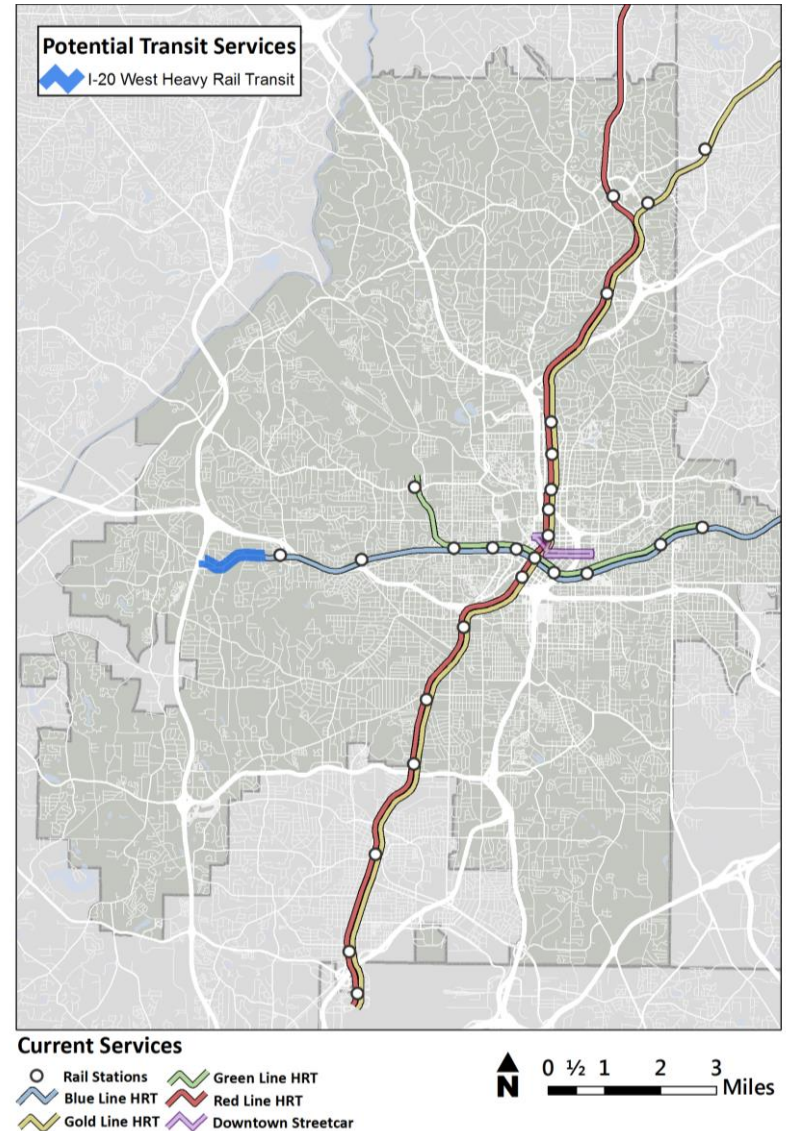
Light Rail Transit

- Atlanta BeltLine Loop
- Irwin – AUC Line
- Downtown – Capitol Ave Line
- Crosstown Midtown Line
- Crosstown Crescent Line
- Peachtree – Ft Mac – Barge Rd Line
- “S” Concept – Murphy Crossing – Armour Yard via AUC and Eastside Trail



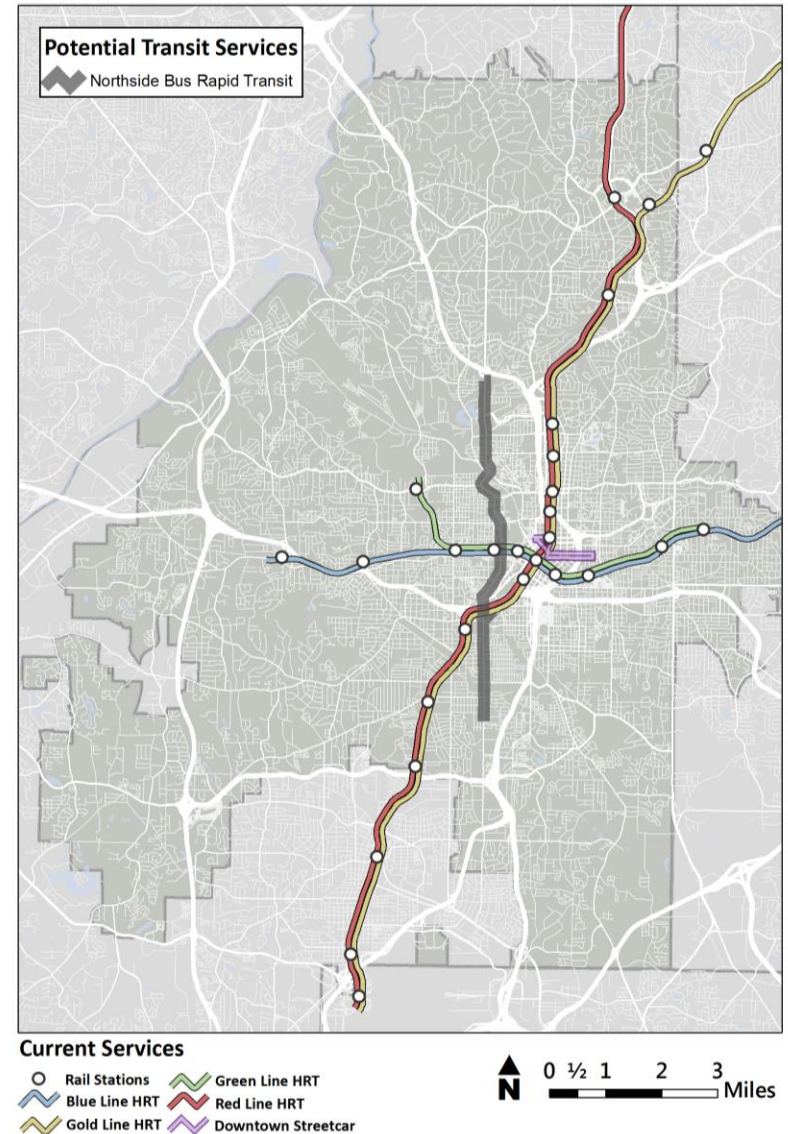
Potential High Capacity Improvements

- I-20 West Heavy Rail Transit



Potential High Capacity Improvements

- Northside Drive Bus Rapid Transit



Potential High Capacity Improvements

Multi-Jurisdictional Projects

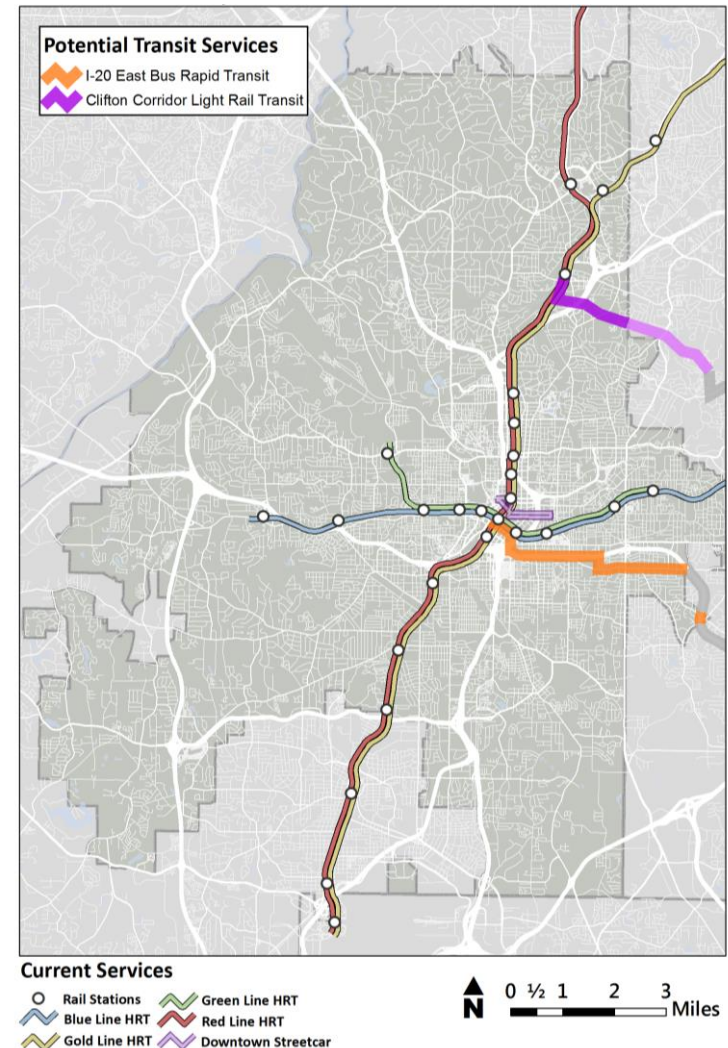
- Clifton Light Rail Transit*



- I-20 East Bus Rapid Transit*

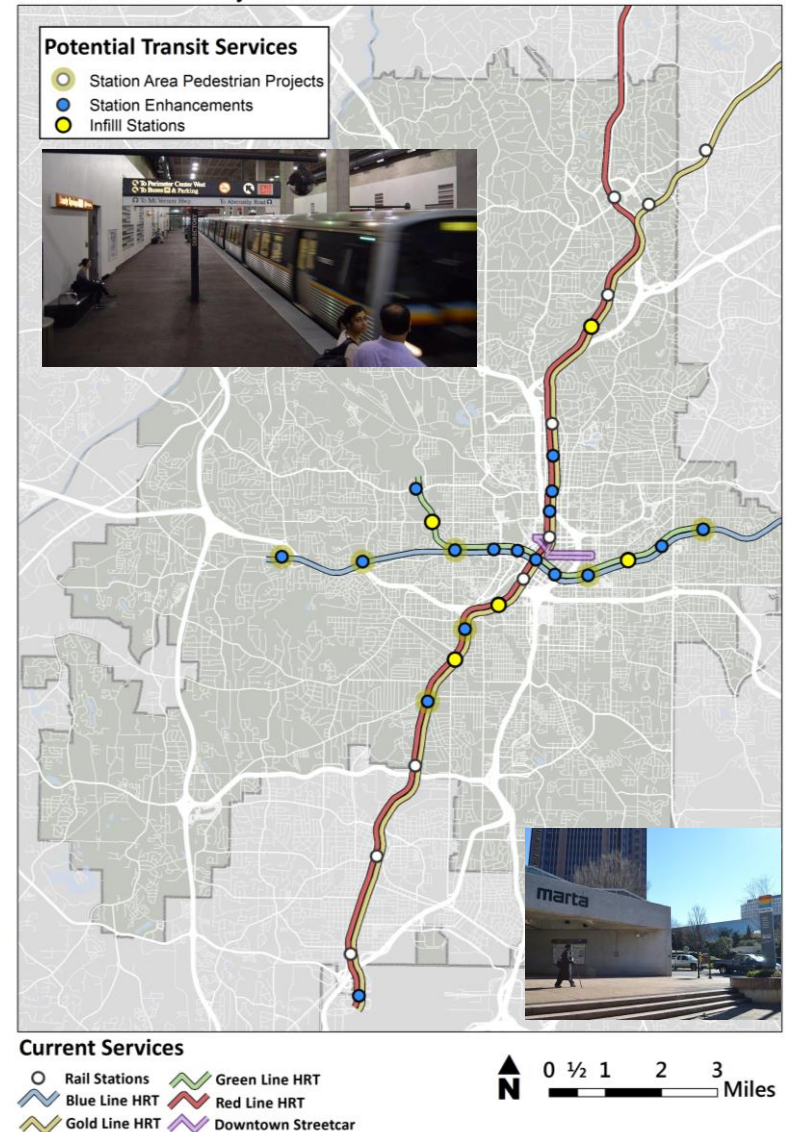


* Contingent upon funding agreement with other jurisdictions for capital, operations and maintenance.



Potential High Capacity Improvements

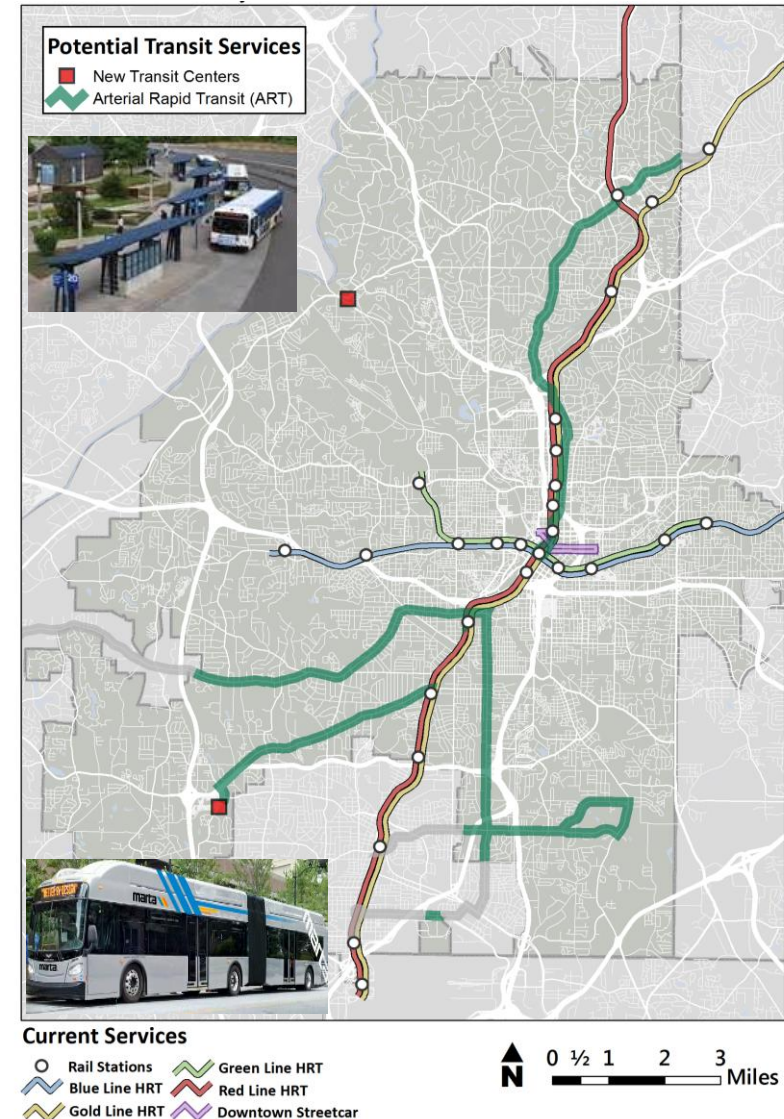
- Station enhancements at City of Atlanta rail stations
 - Station rehabilitation
 - Aesthetics/maintenance
 - Signage/wayfinding
 - Pedestrian/bicycle/ADA
- Capacity improvements
 - Infill (new) stations
 - Armour
 - Boone
 - Hulsey/Krog St.
 - Mechanicsville
 - Murphy Crossing
 - Additional railcars
 - Blue/Green capacity improvements



Potential Bus Service Improvements

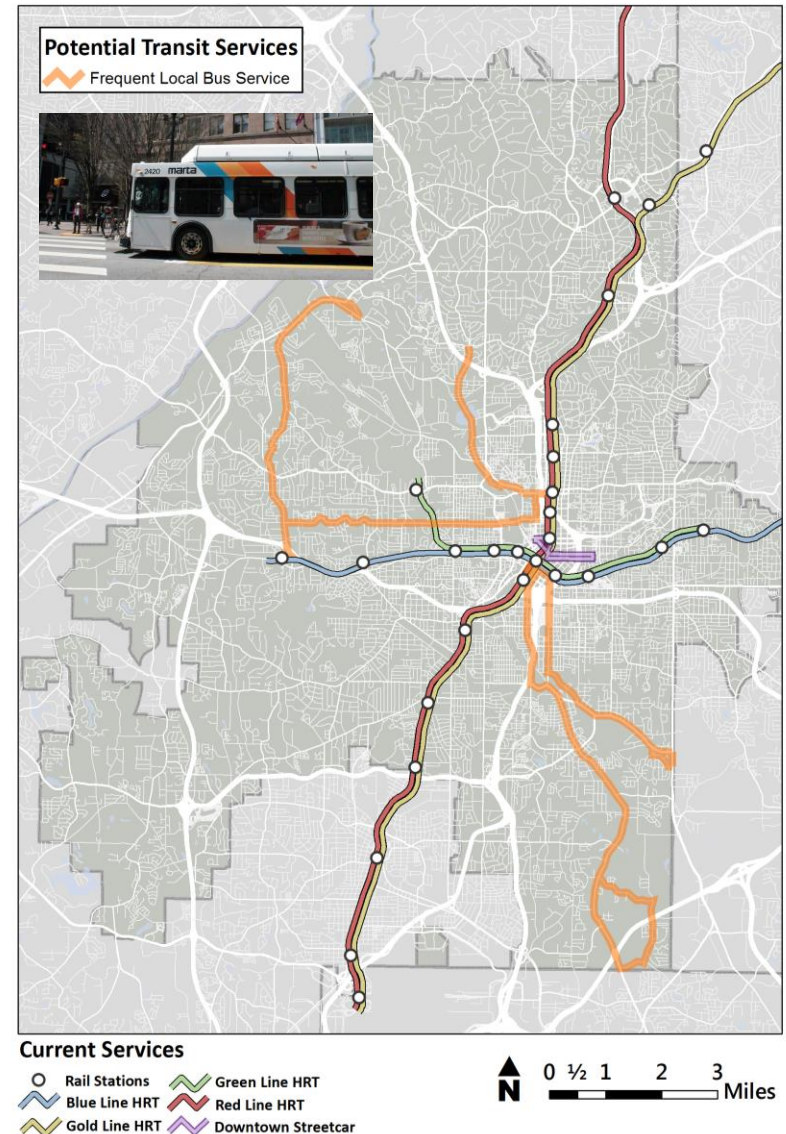
- Five (5) Arterial Rapid Transit Routes
 - Campbellton - Greenbriar Mall to Oakland City
 - Cascade - Fulton Industrial Blvd to West End
 - Cleveland - Jonesboro Rd and Browns Mill Rd to East Point
 - Metropolitan - West End to College Park
 - Peachtree - Brookhaven to Five Points

- Two (2) Transit Centers
 - Greenbriar - Greenbriar Mall
 - Moores Mill - Bolton Rd and Marietta Blvd

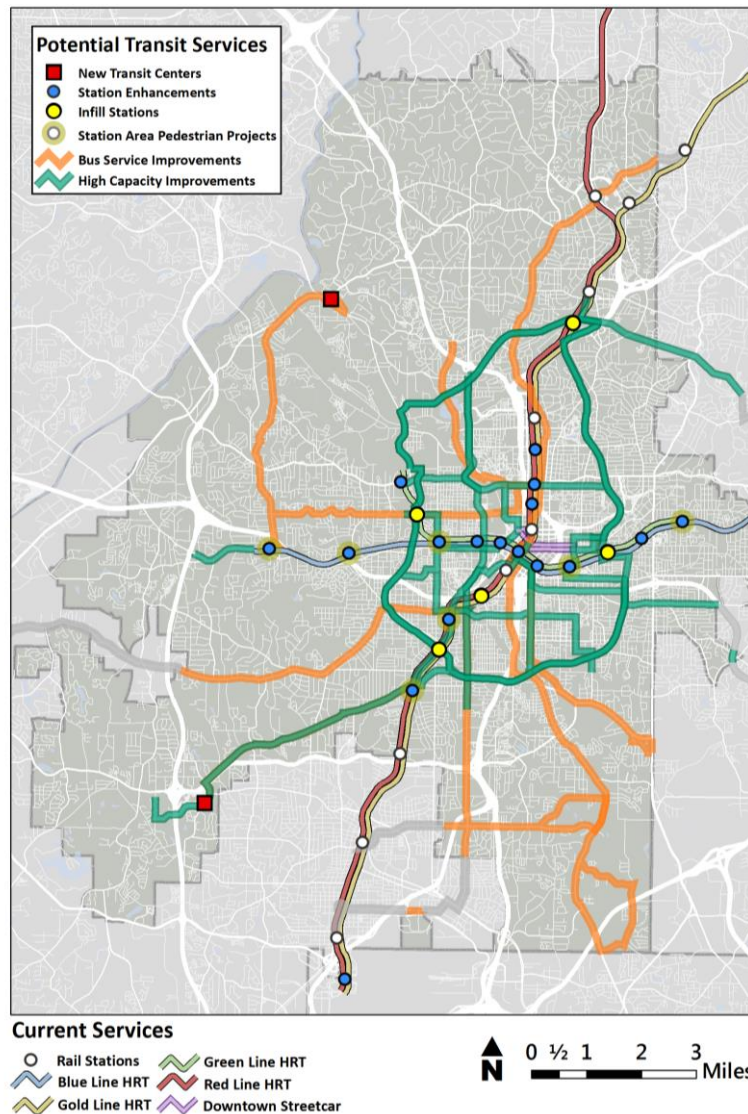


Potential Bus Service Improvements

- **Frequent Local Service**
 - 15-minute peak; 30-minute off-peak service on Routes 12, 49, 51, 55 and 60
- **Supporting Local Service**
 - Increased service during off-peak to include midday, nights and weekends on selected routes
- **Community Circulator Service**
 - New neighborhood-friendly and activity center-oriented circulator routes
 - Specific community circulator routes to be determined as demand warrants



Potential Program Summary



Survey Results

- Four community meetings
 - May 25 and 26, June 1 and 2

Very Important	Somewhat Important	Neutral	Not Important	Not at all Important
5	4	3	2	1

- How important is it to you to fund the following transit projects?

Project	Score	Percent
Increase the frequency of existing bus routes	4.5	60%
Expansion of Atlanta Streetcar/light rail, including the Atlanta BeltLine loop	4.4	70%
Introduce new bus routes and community circulator service	4.1	33%
Introduction of bus rapid transit on Northside Dr and Metropolitan Pkwy	3.9	28%
Extension of heavy rail west from HE Holmes Station to I-285	3.4	24%



Potential MARTA Program Summary

Potential Program	Estimated Capital Cost (Base Year \$ in Millions)			Estimated O&M Cost (Base Year \$ in Millions)	
	Local Share	Federal Share	Total	Annual O&M Cost	O&M Cost Over 20 Years
High Capacity Improvements	\$3,237	\$2,993	\$6,230	\$134	\$3,211
Bus Service Improvements	\$65	N/A	\$65	\$35	\$833
Pedestrian Improvements	\$12	N/A	\$12	N/A	N/A
Total Estimated Cost	\$3,314	\$2,993	\$6,307	\$169	\$4,044

Next Steps

Activity	Target Date
Public education effort	August – October
Referendum vote	November 8
Amendment to the RTCAA (with a positive MARTA referendum vote)	November – December

City of Atlanta TSPLOST



On November 8, 2016, Atlanta voters will have the opportunity to cast their ballots for two ballot referenda authorizing investment in transit and transportation infrastructure.

The City of Atlanta has proposed a special purpose local option sales tax for transportation – a TSPLOST – for four-tenths of a penny or an additional 4 cents on a \$10 purchase. This TSPLOST will generate approximately \$300 million over a five-year period to fund significant and expansive transportation projects citywide.

1

The City of Atlanta proposed TSPLOST project list is a smart, equitable approach to the city's long-term mobility and connectivity needs.

2

The projects were chosen through a rational process premised on a comprehensive strategy, long-standing priorities, project-readiness, ability to leverage current capital spending and the Renew Atlanta bond program.

3

The projects maximize federal, state and business community partnerships to build more, build smarter.

4

The projects will add to Atlanta's economic competitiveness and will benefit residents, employers, employees and visitors across the City.

5

Accountability and transparency are built into the project list and implementation plan.



TSPLOST PROJECTS INCLUDE:

✓ Complete Streets	\$75,398,139
✓ Sidewalks and Streetscapes	\$69,611,838
✓ Atlanta Beltline/Multi-use Trails	\$65,900,000
✓ Signal Coordination	\$40,000,000
✓ Street, Capacity and Vehicular Improvements	\$37,797,500
✓ Multi-Use Trails	\$18,475,152
✓ Neighborhood Greenways	\$4,107,013
✓ Project Scoping and Engineering Studies	\$4,000,000
✓ Relay Bike Share	\$3,000,000
✓ Partnership and Matching Funding	\$40,000,000

Project Total	\$358,289,641
Five (5) percent program management	\$17,914,482
One (1) percent State of Georgia	\$3,762,041
TOTAL	\$379,966,165

If approved, 94 percent of all Atlanta residents and 98 percent of the city's jobs will be within a half-mile of a TSPLOST, MARTA or Renew Atlanta bond transportation or infrastructure project.



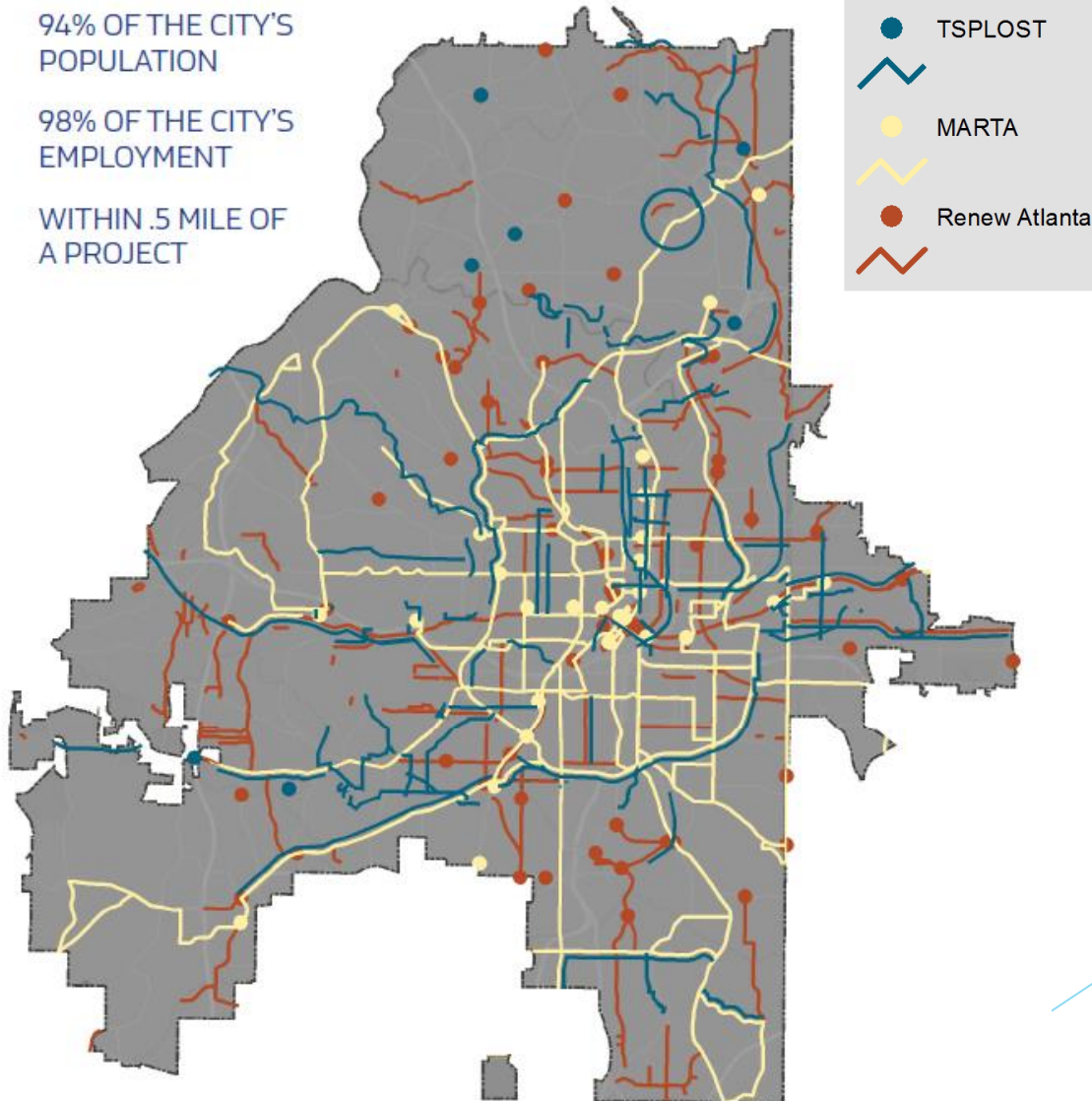
A STORY OF CONNECTIVITY

RENEW ATLANTA & PROPOSED MARTA, TSPLOST PROJECTS

94% OF THE CITY'S
POPULATION

98% OF THE CITY'S
EMPLOYMENT

WITHIN .5 MILE OF
A PROJECT



Atlanta BeltLine Etiquette

July 26 – Meeting to identify trail safety challenges and proposed solutions.
Participants:

- Path Force
- PATH Foundation
- PEDS
- Atlanta Bicycle Coalition
- Atlanta BeltLine Partnership
- City of Atlanta Chief Bicycle Officer
- Atlanta Regional Commission
- Georgia Bikes
- Atlanta BeltLine, Inc.



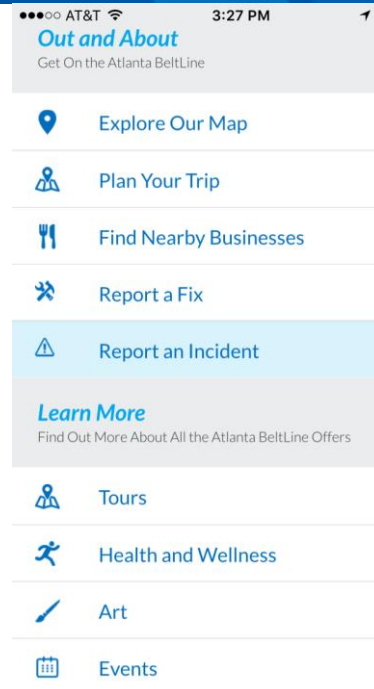
Atlanta BeltLine Etiquette

- Key issues
 - Trail capacity
 - User expectations for behavior
 - Reporting trail incidents
- Recommendations
 - Informational Video
 - Etiquette Cards for Bike Rental/Friendly Businesses
 - App Upgrade for Incident Reporting to gather Data
 - Enhanced Signage



Get On the Atlanta BeltLine

With trails, parks, an arboretum, and endless amazing scenery, the Atlanta BeltLine has something to offer everyone! The Atlanta BeltLine is linking neighborhoods and transforming the way people get around. It's time for you to GET ON, and experience the place where Atlanta comes together.



REPORT AN INCIDENT

Have you experienced an incident (related to trail design / blind curve, speed concerns / trail etiquette, or wayfinding and signage confusion) out on an Atlanta BeltLine trail? We encourage you to share details on this form so that we can track and resolve any safety issues.

If your incident is a medical emergency or involves criminal activity, please call 911 and get the appropriate medical or police assistance before reporting it to us.

Name (required)

Email (required)

Describe the location of the incident you experienced



- > Slow down
- > Stay to the right
- > Pass on the left
- > Call "left" or ring your bell when passing on your bike

- > Step off the trail to stop
- > Walk only in twos, side-by-side
- > Clean up after your pet
- > Maximum 6-foot leashes on pets
- > Keep children close

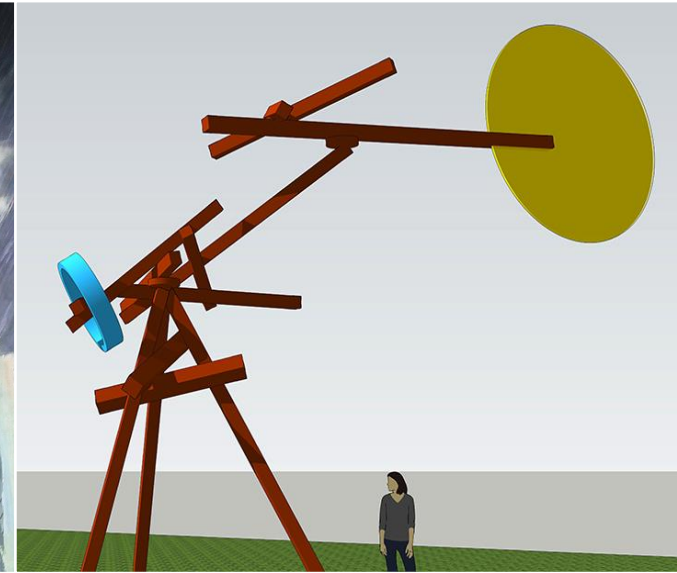
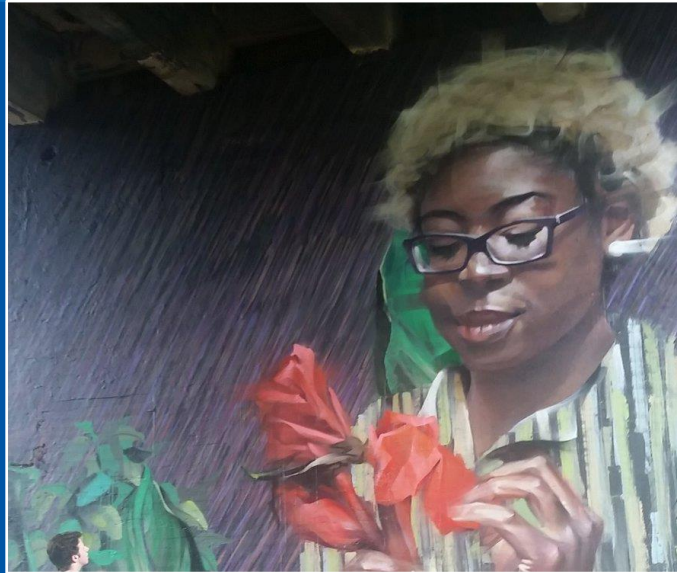
For health or physical safety-related issues, please call 911. Please notify Atlanta BeltLine, Inc. of all other issues by using the "report an incident" feature in our app or on our website (beltline.org/etiquette) or by calling 404-477-3003.



History of Art on the Atlanta BeltLine



- **September – November**
- Largest public art display in Atlanta's history
- Hundreds of artists including muralists, sculptors, painters, mosaic artists, performers and musicians



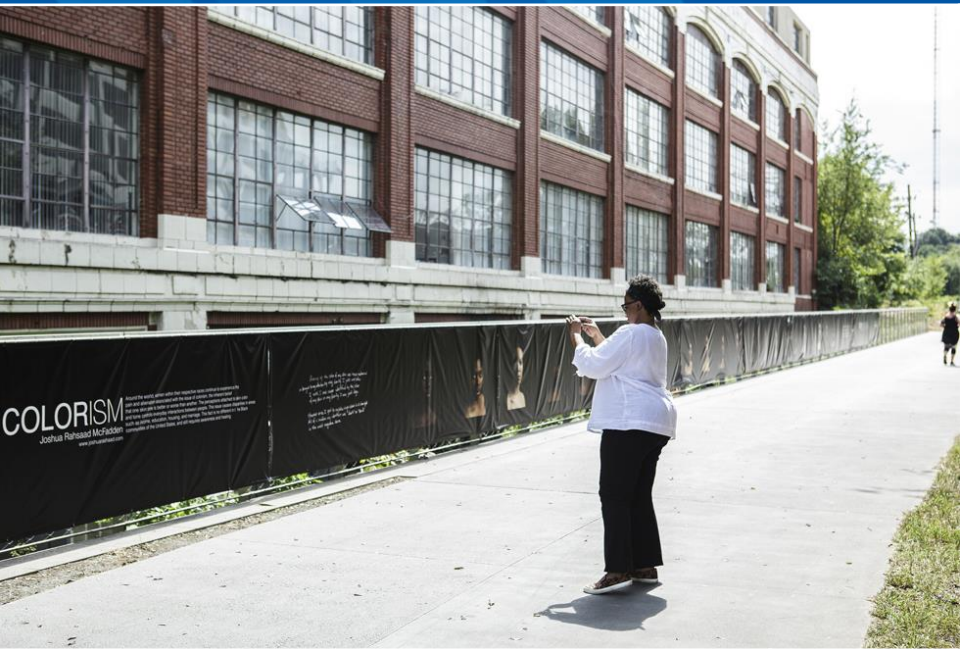
History of Art on the Atlanta BeltLine



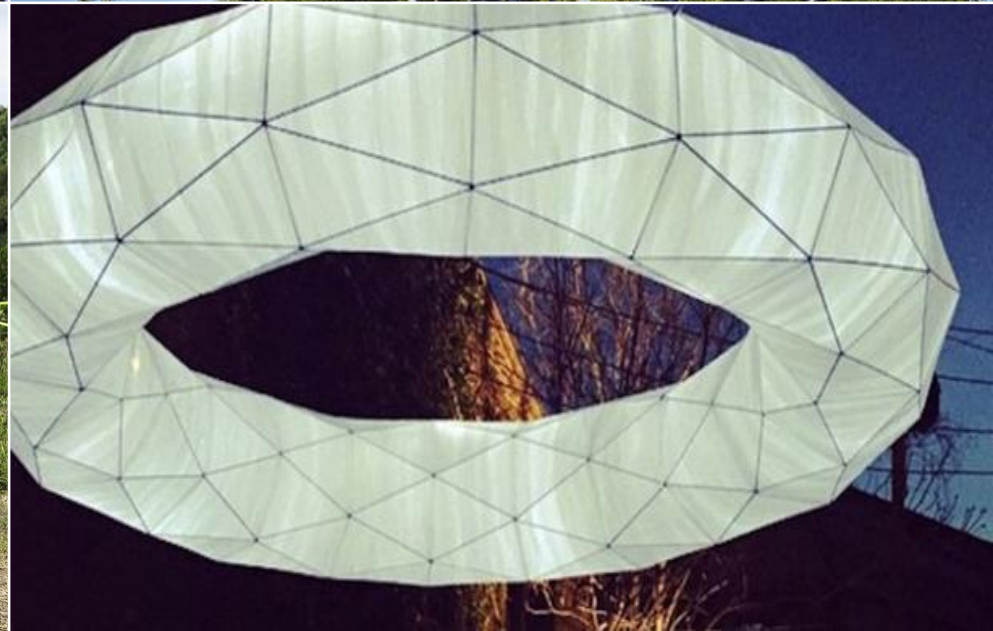
- Year 7: Nearly 100 works of art, and three weekends of performance
- Many artists returning for 3rd, 4th, & 5th years
- Since inception, the project has grown more than 40%
- 2015 Lantern Parade kicked off the exhibition with more than 60,000 participants



Engaging the Community



Engaging the Artist

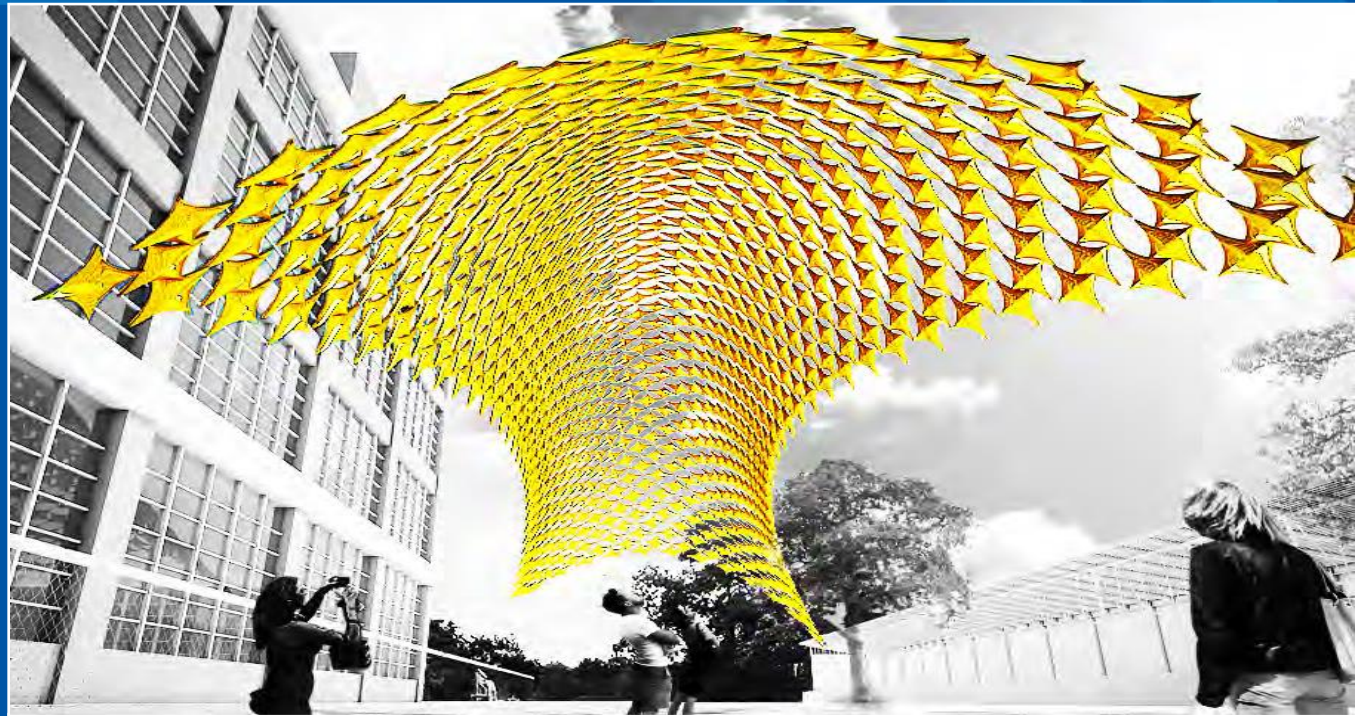


Art on the Atlanta BeltLine 2016



Performances:

- Oct 1: Gordon White Park
- Oct 2: Historic Fourth Ward Park
- Oct 8: Historic Fourth Ward Park
- Oct 9: Piedmont Stage and Reynoldstown



2016 Art on the Atlanta BeltLine sponsors

art on the
ATLANTA BELTLINE

Google fiber



WELLSTAR
Atlanta
Medical Center



FULTON COUNTY
arts & culture

MailChimp

Georgia
COUNCIL
for the
Arts

ART WORKS.

**National
Endowment
for the Arts**
arts.gov



90.1 FM
WABE
Atlanta's NPR Station

**NEW
CHURCH**

Westside Trail



- Construction is on schedule and within budget
- 3-mile trail will connect 4 schools and 4 parks
- 14 access points
- Vertical connections
- Preparation for future transit



Westside Trail



- Stormwater system between Langhorn/ Enota Park complete
- Bridge over MLK complete – handrails to be added
- Ramp/stairs at Lawton/Donnelly will be complete this fall
- Trail pouring between Allene and University and between MLK and Washington Park to begin in early fall



Eastside Trail Extension



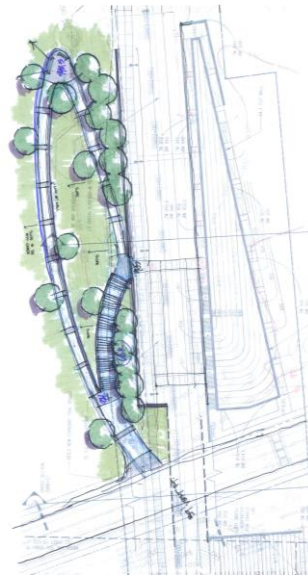
- Water line and ADA ramp work on the south side of Wylie wrapping up in a few weeks
- Work on the north side of Wylie to allow for trail, lighting, and trees/ plantings beginning early fall
- Work in the Krog Tunnel will begin in early fall to install pavers & railings



Southside Trail Design



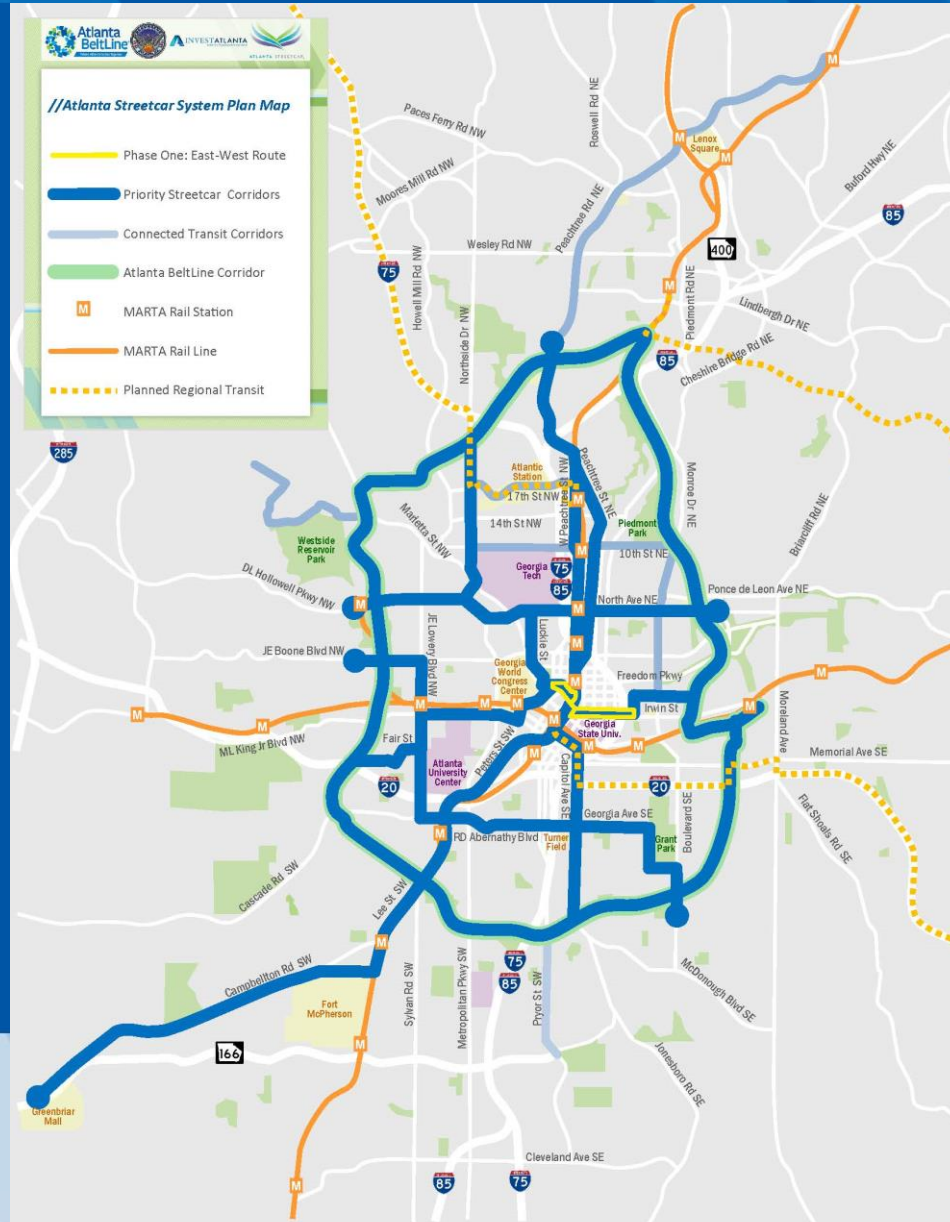
- 4-miles, University Ave to Glenwood Ave
- 18-24 month Design Process
- Wrapping Up Concept Phase Fall 2016
- Return to community mid-2017



Streetcar System Plan



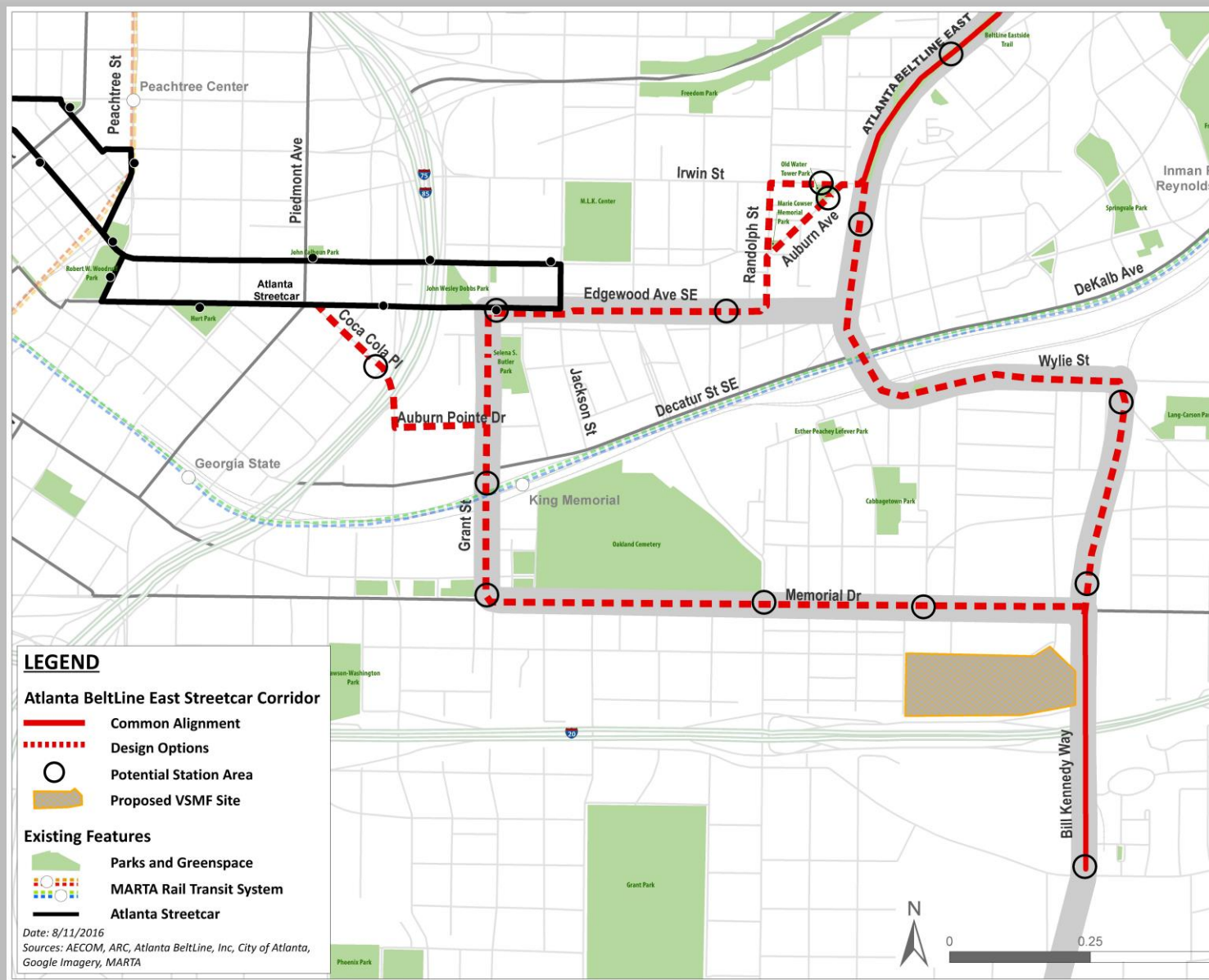
- Atlanta BeltLine planning area overlaps with SSP
- SSP focuses on the Atlanta BeltLine and connectivity with MARTA and the City's core
- Policy framework for 50+ miles of streetcar service
- City Council adopted in December 2015



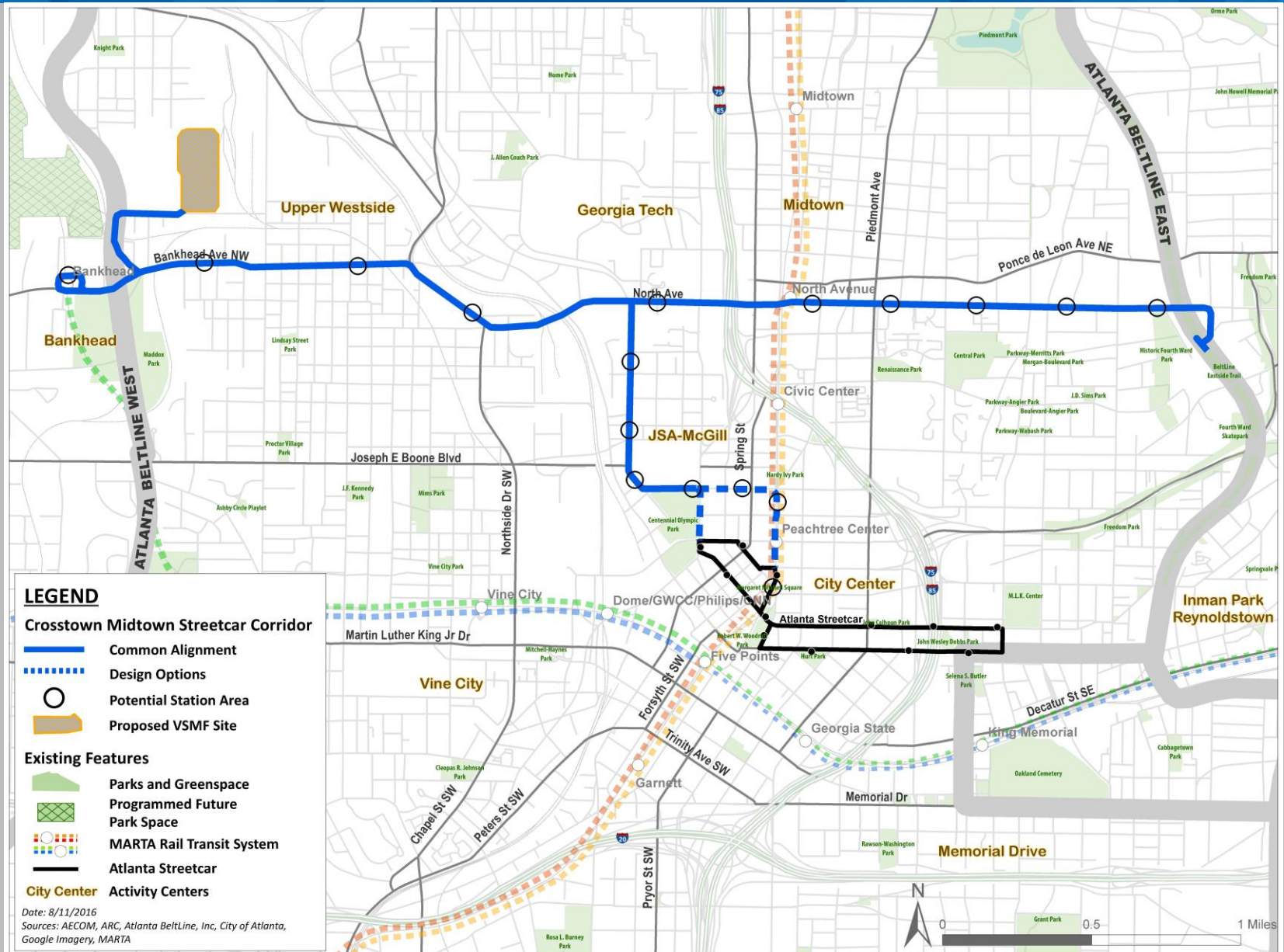
Atlanta BeltLine West



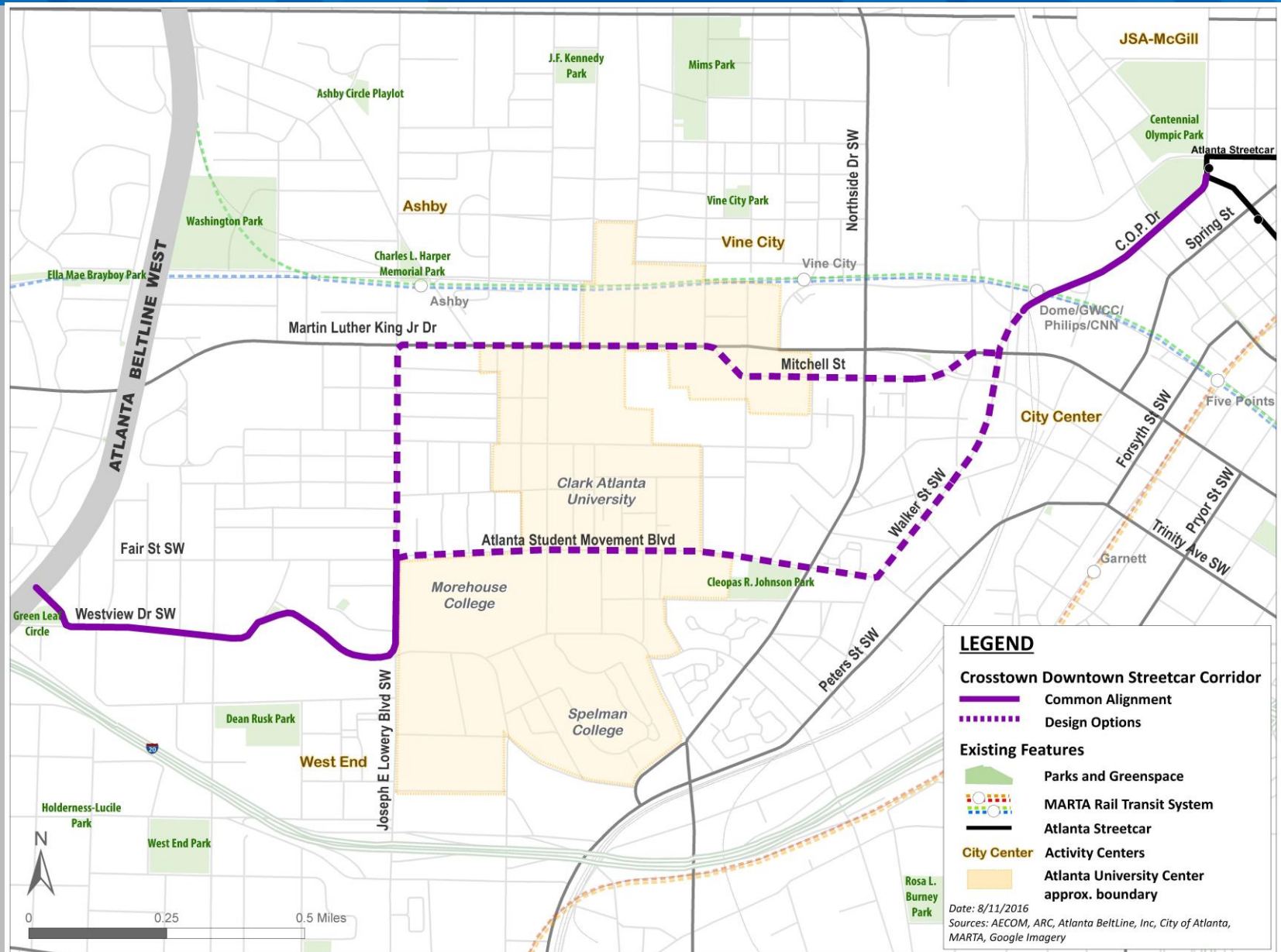
Atlanta BeltLine East



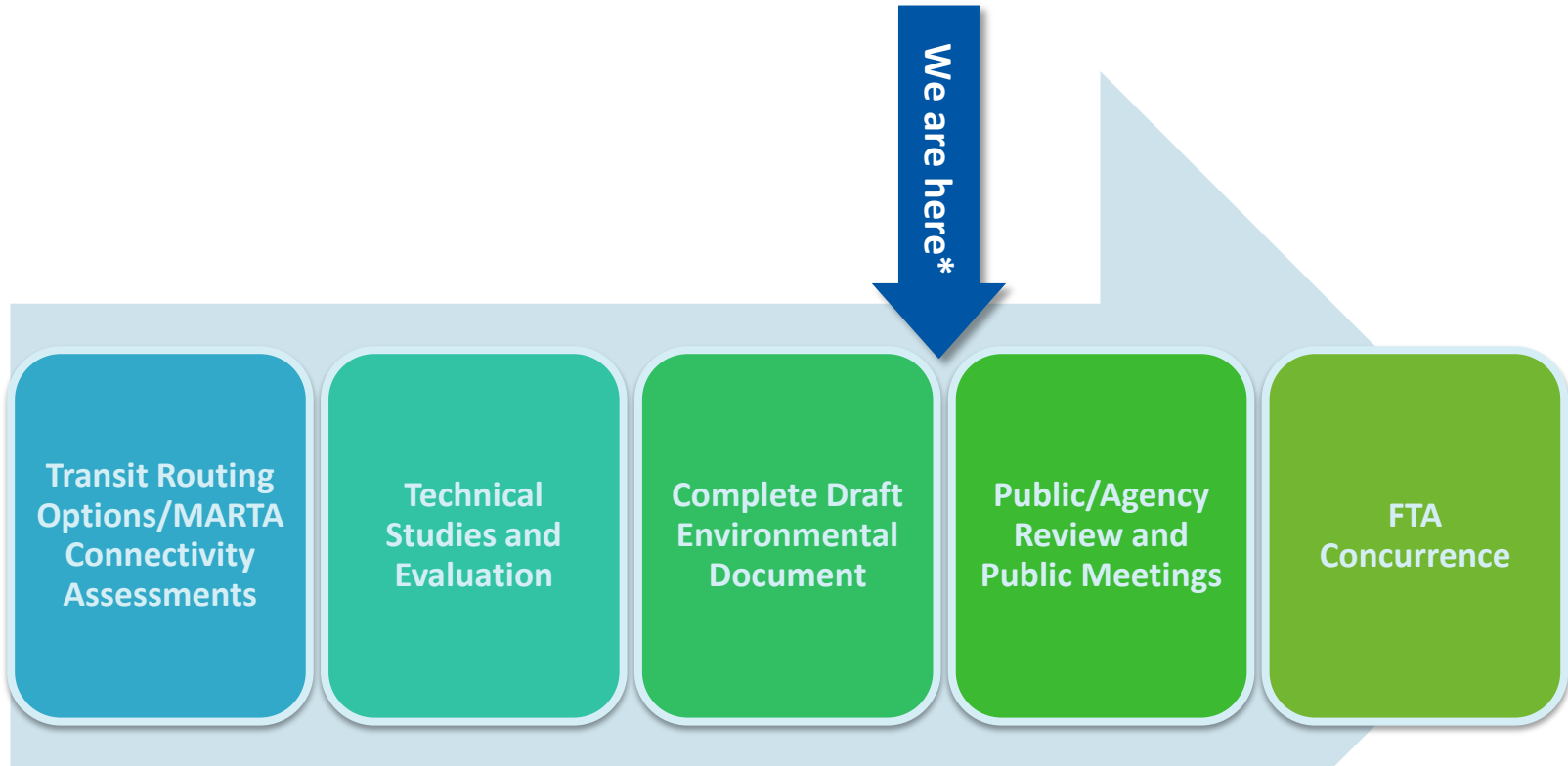
Crosstown Midtown



Crosstown Downtown

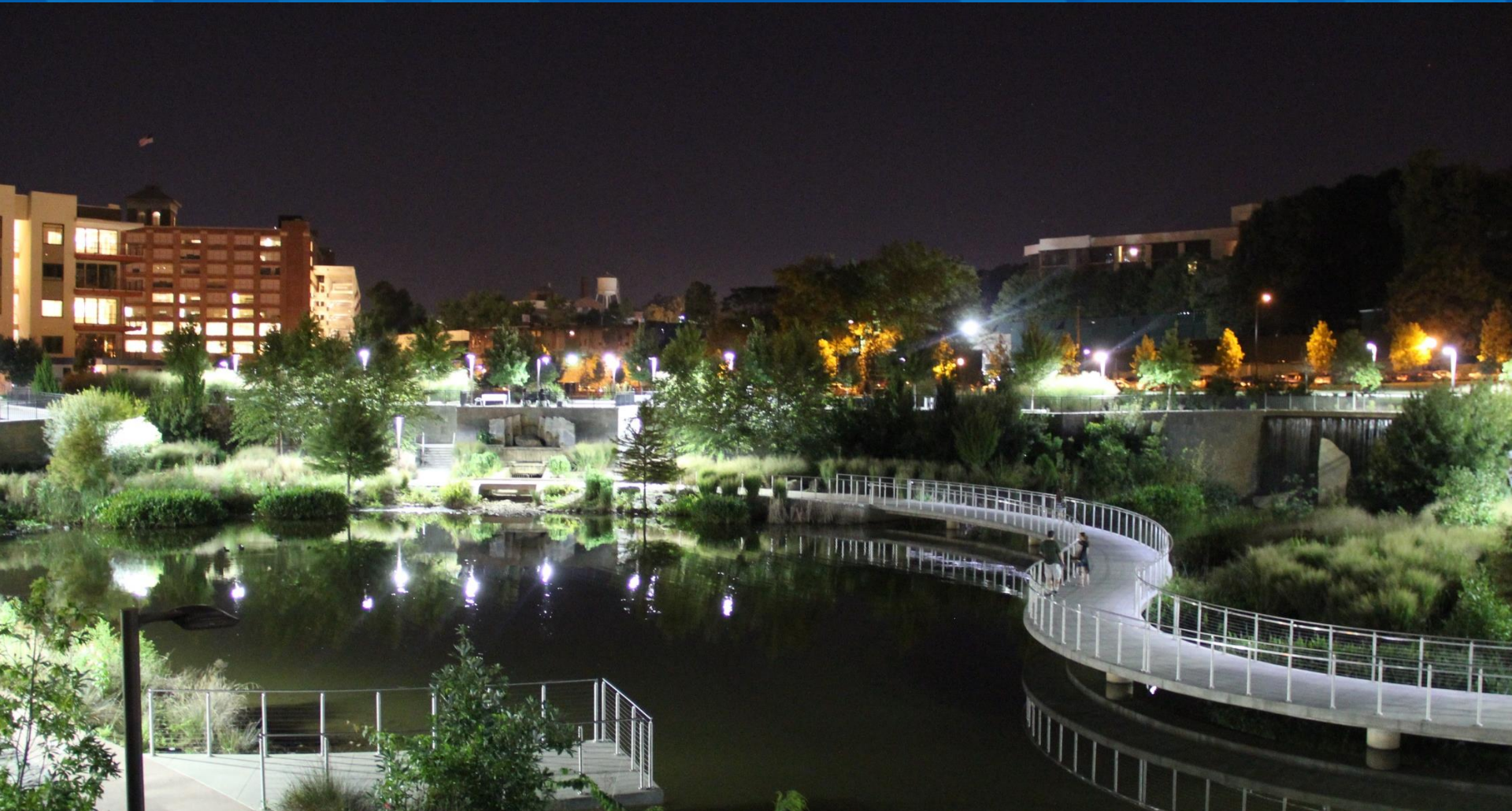


Milestone Schedule



*Technical studies are now starting for the Crosstown Downtown corridor

Thank you!



@AtlantaBeltLine // engage@atlbeltline.org

Atlanta BeltLine Partnership

Quarterly Briefing
September 26, 2016



@atlantabeltline



@atlantabeltline



@atlantabeltline

Atlanta
BeltLine
Partnership



Atlanta
BeltLine®



Old Fourth Ward Fall Fest

Presented by XFINITY

Free, two-day celebration centered around the Lantern Parade

Live music, lantern workshops, food trucks, Kids & Pet Zones

~ 10,000 attendees in the festival's second year

Presented by:

xfinity

Atlanta
BeltLine
Partnership



Atlanta
BeltLine



Health and Wellness

Creating a healthier quality of life for residents of Atlanta BeltLine neighborhoods and users of Atlanta BeltLine parks and trails.



Westside Trail Community Health Grant Program

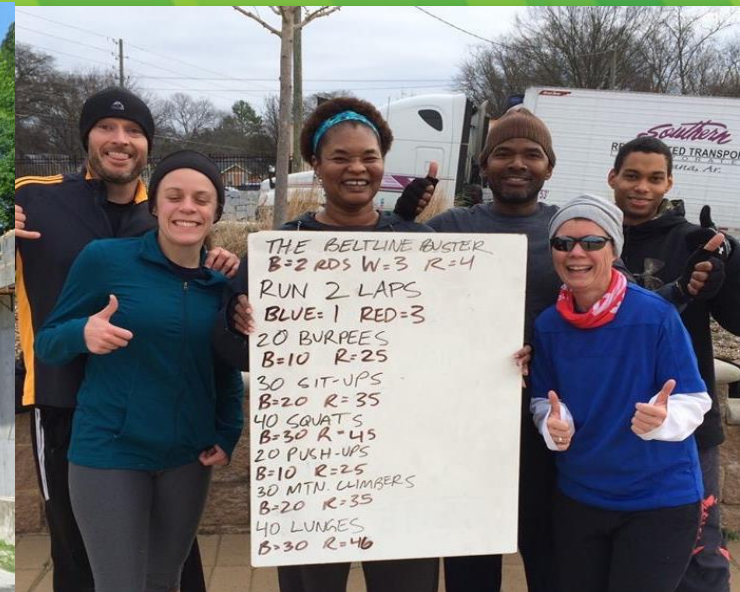
\$500K investment by Kaiser Permanente to improve health outcomes in communities along the Westside Trail

- One-year grants up to \$30K
- Two-year grants up to \$100K

Short application
deadline: October 17



→ beltline.org/healthgrants



Free Fitness Classes

Promoting the use of parks and trails to support an active, healthy lifestyle

→ beltline.org/fitsignup

Sponsored by:



2016 YTD: 235 Classes, 12,000+ participants

Bike Tour Relaunch

Eastside tours on
1st/3rd Saturdays

Westside tours on
2nd/4th Sundays

Bike rentals available

Sponsored by
Mountain High
Outfitters

→ beltline.org/tours



Atlanta
BeltLine
Partnership



Atlanta
BeltLine®

Westside 5K & Play Day

Held July 16 at West
End Park

530+ participants of
all fitness levels

Part of the
Run.Walk.Go! Race
Series

Presented by:



Atlanta
BeltLine
Partnership



Atlanta
BeltLine

Upcoming Events

Boulevard Crossing Park Play Day

- Sat. Oct. 8, 2-6 p.m.
 - In partnership with Atlanta Contact Point
- beltline.org/playday



Atlanta BeltLine Eastside 10K

- Sat. Dec. 3, 10 a.m.
 - Starts at Stoveworks
 - Inaugural Eastside "No-K"
- beltline.org/races



Free Homeowner Workshops

2-hour workshops
delivered by Home Place
Consulting

- October 17 @ 10:30am
- October 27 @ 6pm
- November 5 @ 10am

Help residents take
advantage of available
resources to stay in their
homes or evaluate
opportunities if they are
considering selling

→ empower@atlblp.org

→ 404-446-4410



Atlanta
BeltLine
Partnership



Atlanta
BeltLine®

Fall Volunteer Days on the Atlanta BeltLine

September - November

Weeding, invasive plant and litter removal, tree care, graffiti and sticker removal

All four paved trails plus interim hiking trails

In partnership with Park Pride and Trees Atlanta

Details coming soon at beltline.org/adopt



Atlanta
BeltLine
Partnership



Atlanta
BeltLine®



TREES
ATLANTA

Become a Member

Join the Atlanta BeltLine Partnership as a member.

- Moves the Atlanta BeltLine project forward
- Builds support
- Strengthens communities

→ beltline.org/member



AUGUST 2010



OCTOBER 2012



FUTURE

**MEMBER
DISCOUNT CARD**



**Atlanta
BeltLine®**
Where Atlanta Comes Together



Atlanta
BeltLine
Partnership



**Atlanta
BeltLine®**

Atlanta
BeltLine
Partnership



**Atlanta
BeltLine®**
Where Atlanta Comes Together

JOIN THE
**ATLANTA BELTLINE
PARTNERSHIP**

TSPLOST & MARTA Sales Tax

We have an unprecedented opportunity to ensure the future of the Atlanta BeltLine

- Voter Registration Deadline: Oct. 11
- Early Voting Period: Oct. 17 – Nov. 4
- “Don’t Stop at the Top!”



Atlanta
BeltLine
Partnership



Atlanta
BeltLine®

Thank you!



info@atlblp.org // 404-446-4404