

Atlanta BeltLine, Inc.

Quarterly Briefing

Agenda

- Welcome & Open House
- ABI CEO Update
- Transit Update
- Atlanta BeltLine Partnership Update
- Q&A

December 14, 2010

Atlanta BeltLine, Inc.

Quarterly Briefing

Agenda

- Welcome & Open House
- ABI CEO Update
- Transit Update
- Atlanta BeltLine Partnership Update
- Q&A

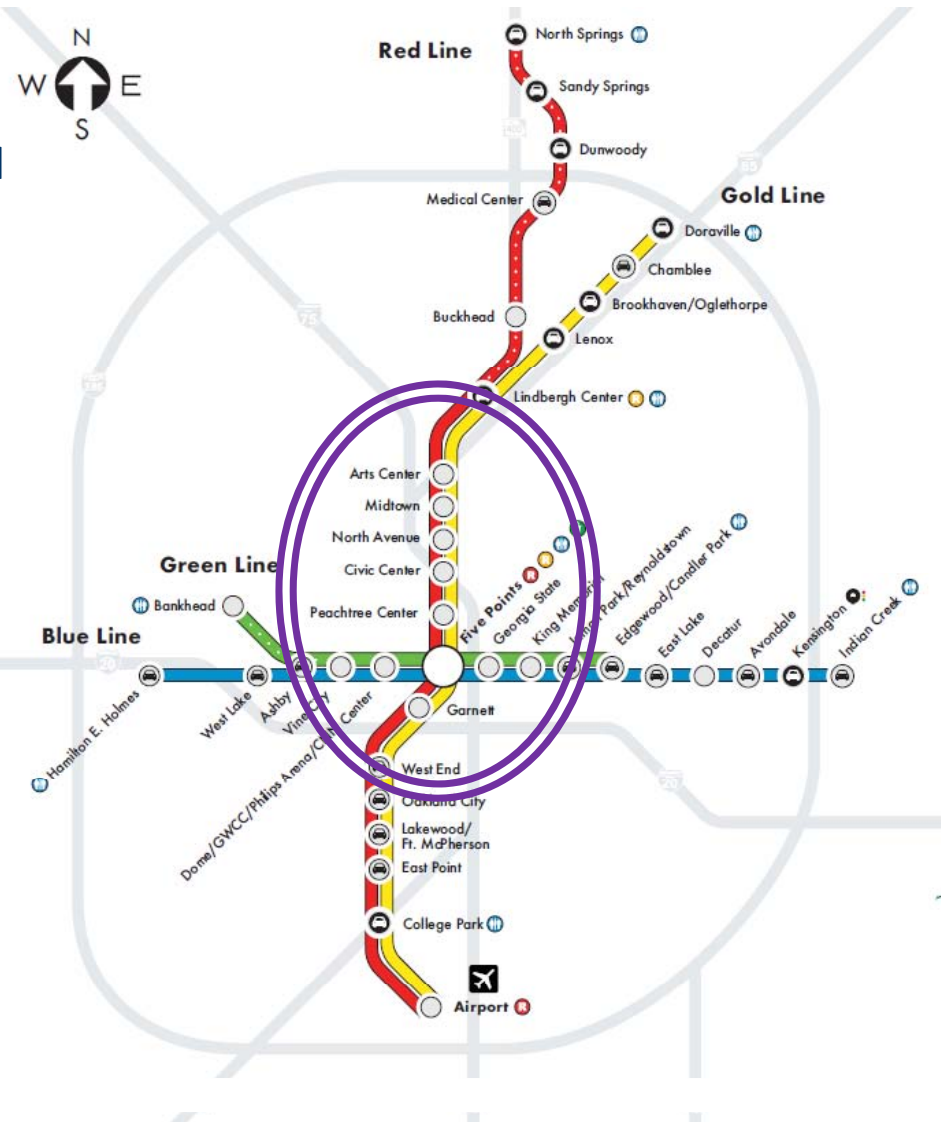
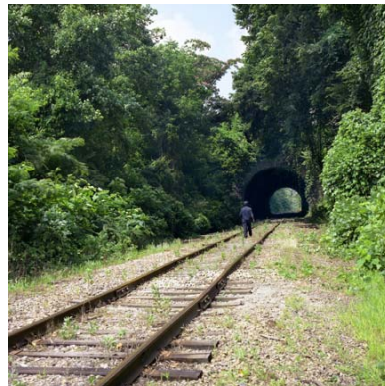
December 14, 2010

ABI CEO Update

What Is The Atlanta BeltLine?



The Atlanta BeltLine is in the heart of the Atlanta region & utilizes historic freight rail ROW circling the City.



ABI CEO Update

Where Is The Atlanta BeltLine?

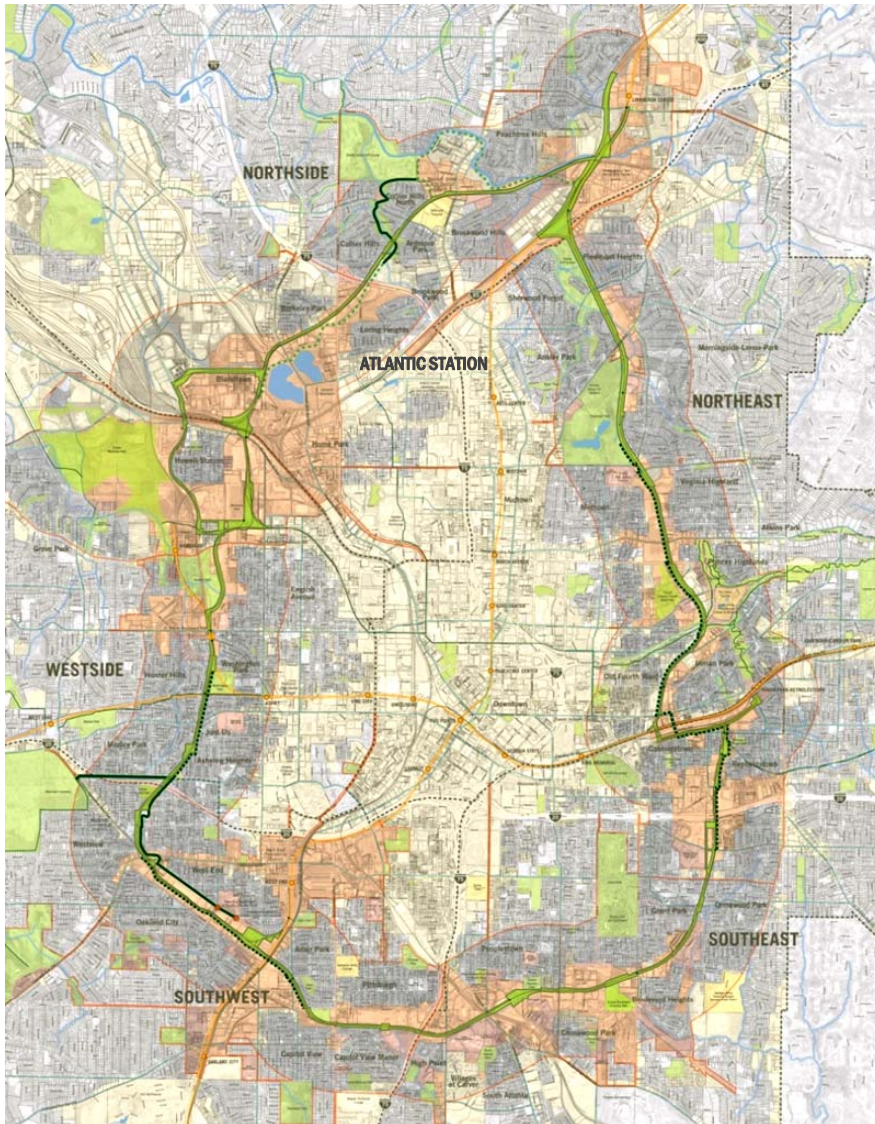


- **Inside** the Perimeter
- **2 – 3 miles** from Downtown Core



ABI CEO Update

Where Is The Atlanta BeltLine?



- Connects **45 neighborhoods**
- **6,500 acre** redevelopment area
- **22% of City of Atlanta population** lives in the Atlanta BeltLine planning area
- **8% of the City's land mass** is inside the Atlanta BeltLine TAD
- **40% increase** in Atlanta's parkland

ABI CEO Update

What Is The Atlanta BeltLine- Key Elements



Transit
22-mile loop



Parks
1300 + new acres



Trails
33 miles



Jobs & Economic Development
20 areas, 30k jobs



Affordable & Workforce Housing
5,000 Units



Existing Communities & Historic Preservation



Public Art & Streetscapes



Environmental Clean-up
1100 + acres

Greenspace & Trails

Progress Update








- Over **280 acres** have been acquired for greenspace along the Atlanta BeltLine
- In 2011, three new parks will open
- **3.3 miles** of permanent trail completed (10% of entire system)
- **7 miles of hiking trails** completed
- **2.5 miles** of permanent trail under construction (Eastside Trail)



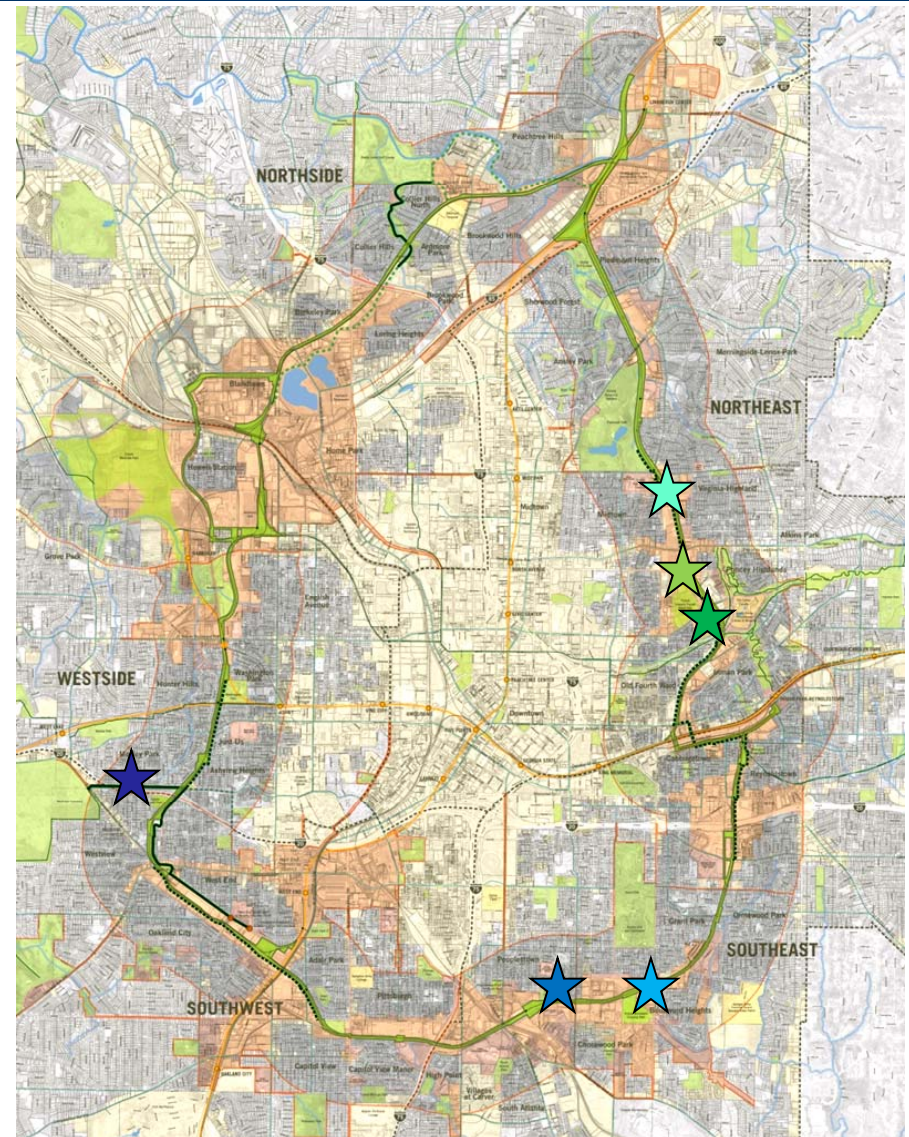
Northside Trail

Construction Update

- Eastside Trail 
- Historic Fourth Ward Park 
- Skate Park (Cox Parcel) 
- Boulevard Crossing Park 
- D.H. Stanton Park 

Recently Completed:

- West End Trail Phase II Opened in June 



Parks

Historic Fourth Ward Park



Parks

D.H. Stanton Park



- Renovation and expansion of an existing 8-acre City park
- Funded by Park Opportunity Bonds, a grant from the Blank Foundation and the Capital Campaign
- City's first energy-neutral park
- Completion early 2011



Parks

Boulevard Crossing Park Phase I



- Opening Spring 2011



***Boulevard Crossing – Trees Atlanta's Kudzu Eating Goats
October, 2010***

Trails

West End Trail



- Approximately 2.4-mile multi-use trail
- Connects historic West End neighborhood to Westview Cemetery
- Funded by PATH Foundation with Federal TE Grant
- Phase I opened 10/08; Phase II opened 06/10



May 2009



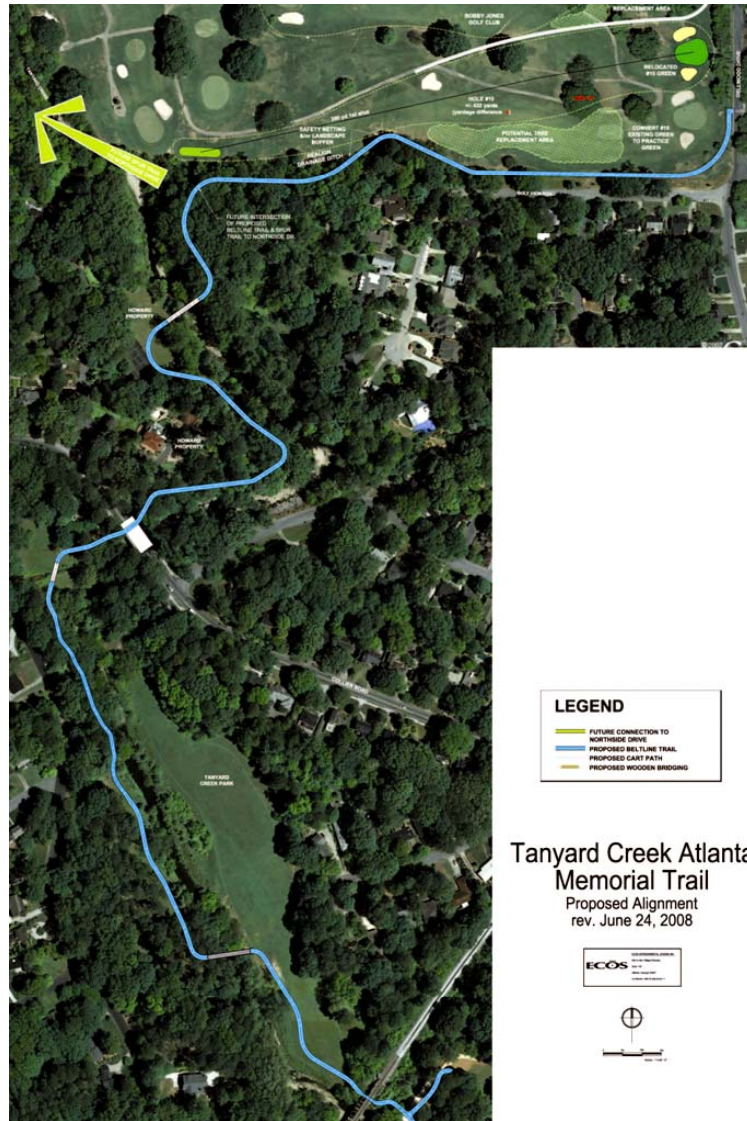
March 2008

Trail: Rose Circle Park



Trails

Northside BeltLine Trail



- Approximately 0.9-mile multi-use trail
- Opened to the public April 2010
- Tanyard Creek Park, Howard Park and Bobby Jones Golf Course in Buckhead
- Funded by PATH Foundation with Federal TE Grant



Trails

East Side Trail



- Approximately 2.5-mile multi-use trail
- Connects Piedmont Park with the Inman Park neighborhood
- Funded by Sarah & Jim Kennedy/PATH Foundation and Kaiser-Permanente Foundation
- Construction underway

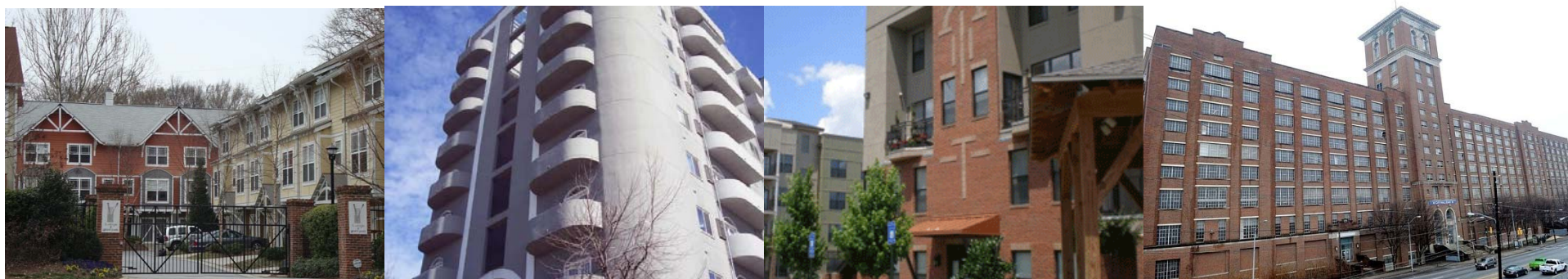


Affordable Housing

Progress to Date



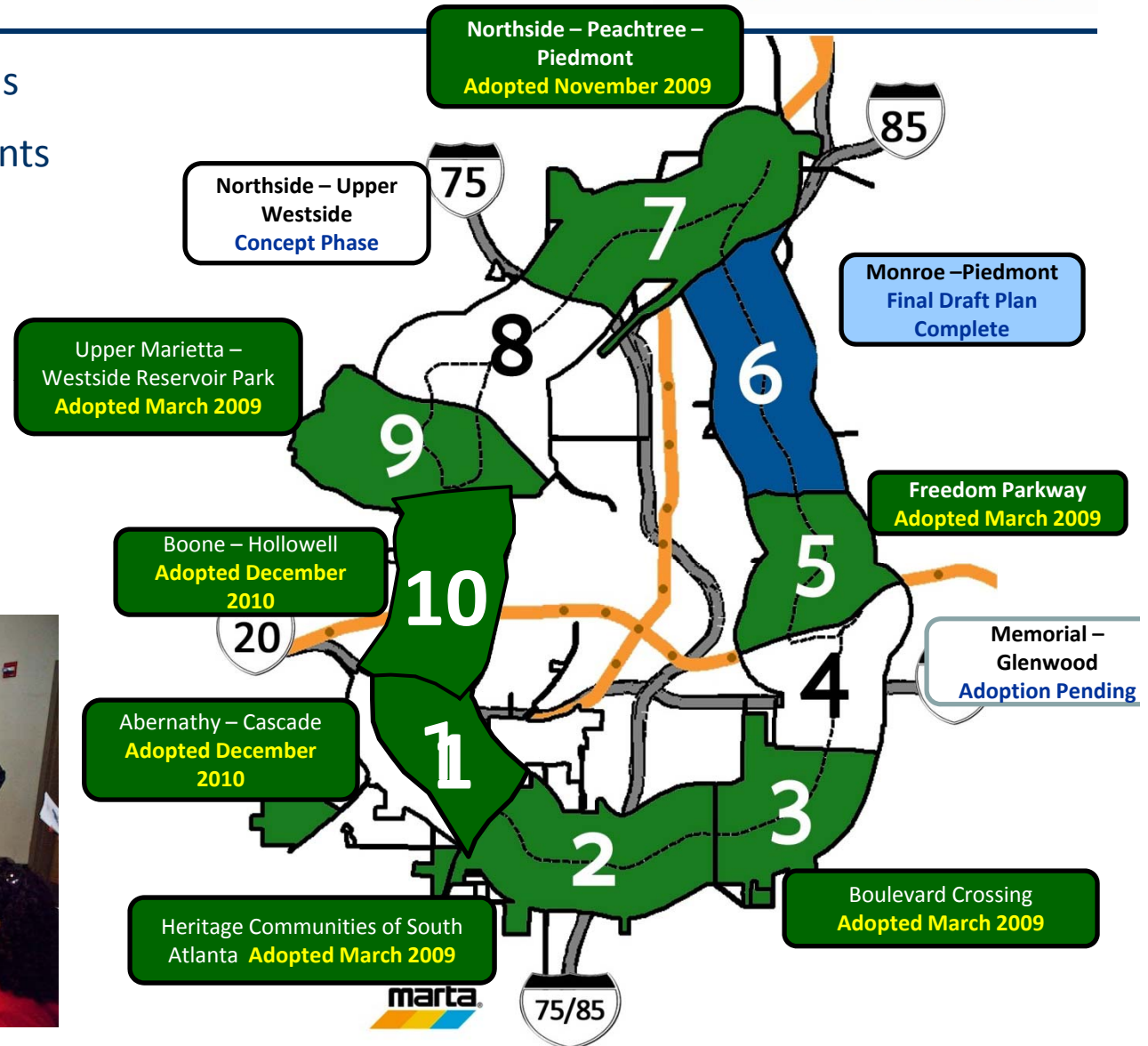
- Committed funds to create 131 units
 - 32 downpayment assistance closings
 - Committed funds to approx. 100 rental units (Phoenix House and City Hall East)
- 43% committed or expended
- Challenges: Market
- Property acquisition funds targeted towards higher land price areas
- Strategy work
 - Aff. housing inventory with BAHAB
 - Financing Mixed Income TOD



Master Planning

Subarea Master Plans

- Land Use recommendations
- Transportation improvements
- Park Master Plans
- 7 of 10 plans adopted
- Expected adoption of all 10 plans by the end of Q3 2011



Community Benefits

Jobs Program & Guiding Principles



- **Connecting residents to Atlanta BeltLine construction jobs**
 - Training
 - Partnership with AWDA (Atlanta Workforce Development Agency)
 - Trainees will receive NCCER and OSHA Certification
 - Opportunity to **COMPETE** for Atlanta BeltLine funded construction jobs
 - First class graduated March 2010
 - Construction Monitoring
 - Agreement created to ensure compliance
 - Started with Stanton Park in Peoplestown
- **Community Benefits Guiding Principles**
 - 18 month community engagement process
 - Adopted by City Council Summer 2010



Art on the Atlanta BeltLine

Atlanta's New Public Space



- Atlanta BeltLine's First Temporary Public Art Exhibition-
- Largest in City of Atlanta's History
- June - October 2010



Atlanta BeltLine, Inc.

Quarterly Briefing

Agenda

- Welcome & Open House
- ABI CEO Update
- Transit Update
- Atlanta BeltLine Partnership Update
- Q&A

December 14, 2010

Atlanta BeltLine, Inc.

Quarterly Briefing

Agenda

- Welcome & Open House
- ABI CEO Update
- Transit Update
- Atlanta BeltLine Partnership Update
- Q&A

December 14, 2010

ATLANTA BELTLINE PARTNERSHIP

2010 Year in Review



Awareness, Education & Ownership

Launched Two New Programs:

- Adopt-the-Atlanta BeltLine
- Atlanta BeltLine Ambassadors



Educated Thousands of Residents

- More than 2,000 participants on tours
- 1,500+ people heard Atlanta BeltLine 101
- Info at more than 55 festivals and events

Expanded On-Line Following

- More than 180,000 visits to beltline.org
- More than 5,000 fans on Facebook
- 10,000+ recipients of enews

Connected People through Events

- 10+ ground breakings, openings, and other special events
- Continued annual events (Braves Night, Bike Tour, Earth Day Clean-Up)



ATLANTA BELTLINE PARTNERSHIP

2010 Year in Review



Atlanta BeltLine Capital Campaign

- \$35.7 million raised from 100+ donors
- \$24.3 million spent or committed to parks and trails

Addressing Social Impacts

- Atlanta Land Trust Collaborative
- Connecting residents to employment opportunities

What's new for 2011?

- Atlanta BeltLine Racing Series
- More openings of parks and trails
- Fostering healthier communities
- Atlanta BeltLine Partnership Annual Campaign



Atlanta BeltLine, Inc.

Quarterly Briefing

Agenda

- Welcome & Open House
- ABI CEO Update
- Transit Update
- Atlanta BeltLine Partnership Update
- Q&A

December 14, 2010