

Atlanta BeltLine, Inc.

Quarterly Briefing

Agenda

- Welcome & Open House
- ABI CEO Update
- Community Engagement Report
- Design & Construction Update
- Public Art Update
- BeltLine Partnership Update
- Q&A

March 4, 2010

Atlanta BeltLine, Inc.

Quarterly Briefing

Agenda

- Welcome & Open House
- ABI CEO Update
- Community Engagement Report
- Design & Construction Update
- Public Art Update
- BeltLine Partnership Update
- Q&A

March 4, 2010

Atlanta BeltLine, Inc.

Quarterly Briefing

Agenda

- Welcome & Open House
- ABI CEO Update
- Community Engagement Report
- Design & Construction Update
- Public Art Update
- BeltLine Partnership Update
- Q&A

March 4, 2010

COMMUNITY ENGAGEMENT UPDATE

Community Benefits Principles Development



BeltLine
Atlanta Connected

Date	Forum	Purpose
August 2009	Citywide Conversation (11 th)	Community Education on Community Benefits (CB) & introduce/launch the development & decision-making process
October 2009	Study Group Mtgs – Round 1	Brief recap CB education & process; present existing input on principles to date to jumpstart the brainstorming & prioritization exercise for CB principles development
November 2009 - January 2010	ABI, TADAC, & Working Group preparation & planning meetings	Organize & process input for finalization of principles
January - March 2010	Small Group Stakeholder Engagement	Vet final draft of CB principles with stakeholders (TADAC CB Committee) including a developer focus group
Spring 2010	Study Group Mtgs – Round 2	Validate final principles w/community
Spring 2010	Citywide Briefing	Brief community on final outcomes of CB principle development process that informs CB policy to be approved by ABI/ADA & council
Summer 2010	ABI/ADA Board Mtgs & CD/HR Committee Mtg	City Council to approve principles & policy

COMMUNITY ENGAGEMENT UPDATE

Community Benefits Principles Development



BeltLine
Atlanta Connected

Draft Principles Developed by category:

- Housing
- Transportation
- Transportation (Non Vehicular)
- Greenspace/Environmental
- Multi-use Development
- Business/Economic Development
- Green
- Public Safety
- Neighborhood & Civic Life
- Land Use/Zoning
- Technology
- Appearance

COMMUNITY ENGAGEMENT UPDATE

Master Planning



BeltLine
Atlanta Connected



- Kick-off meetings for Subarea Master Plans 1, 4, 8, & 10 in January/February 2010 well attended
- Kick-off included community education on the what & why of the BeltLine, Master Planning, Transit-supportive Density, and Connectivity
- Upcoming meetings: Concepts Phase

Get involved in Subarea Master Planning near you!

COMMUNITY BENEFITS JOBS PROGRAM



BeltLine
Atlanta Connected

- Connecting residents to BeltLine construction jobs
- Training
 - Partnership with AWDA (Atlanta Workforce Development Agency)
 - Started in mid February
 - 23 trainees; 11 already placed with the Department of Public Works
 - Trainees will receive NCCER and OSHA Certification
 - Opportunity to **COMPETE** for BeltLine funded construction jobs
- Construction Monitoring
 - Agreement created to ensure compliance
 - Starting with Stanton Park in Peoplestown



Atlanta BeltLine, Inc.

Quarterly Briefing

Agenda

- Welcome & Open House
- ABI CEO Update
- Community Engagement Report
- Design & Construction Update
- Public Art Update
- BeltLine Partnership Update
- Q&A

March 4, 2010

DESIGN & CONSTRUCTION UPDATE

Historic Fourth Ward Park Construction



BeltLine
Atlanta Connected



September '09



February '10

DESIGN & CONSTRUCTION UPDATE

Historic Fourth Ward Park Construction



BeltLine
Atlanta Connected



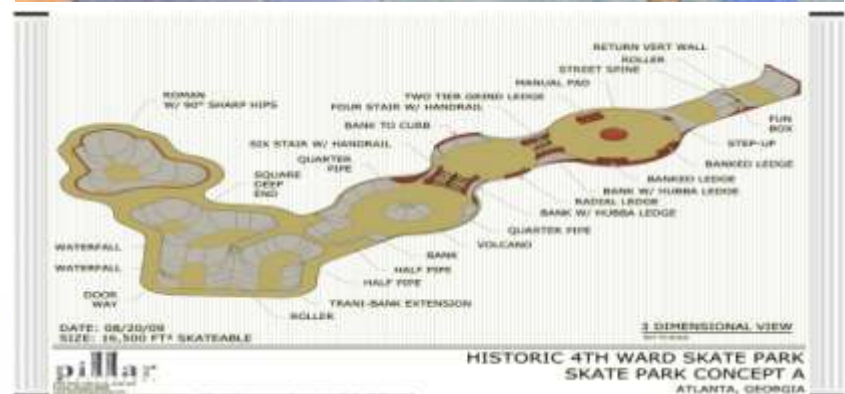
February '10

DESIGN & CONSTRUCTION UPDATE

Historic Fourth Ward Park - Phase II



BeltLine
Atlanta Connected





12

D.H. Stanton Park



INDEX

© 2005 Pearson Education, Inc. All rights reserved.

October 22, 2009 Site Plan

DESIGN & CONSTRUCTION UPDATE

Atlanta Memorial Trail



- 0.9-mile multi-use trail
- Currently under construction
- Connects Ardmore Park, Tanyard Creek Park, Howard Park and Bobby Jones Golf Course in Buckhead
- Supervised by PATH Foundation
- Open to Public April 2010



Atlanta Memorial Trail, February 2010

DESIGN & CONSTRUCTION UPDATE

West End Trail Phase II



- Approximately 1.4-mile multi-use trail
- Currently under construction
- Connects West End Trail Phase I at RDA Boulevard to Westview Cemetery
- Supervised by PATH Foundation
- Open to Public in June 2010



Atlanta BeltLine, Inc.

Quarterly Briefing

Agenda

- Welcome & Open House
- ABI CEO Update
- Community Engagement Report
- Design & Construction Update
- Public Art Update
- BeltLine Partnership Update
- Q&A

March 4, 2010

PUBLIC ART UPDATE

D.H. Stanton Park



SCALE: 1"=20'-0"



incentive

ECOS

© 2005 Blackwell Publishing Ltd, *Journal of Internal Medicine* 258: 103–110

D.L. STANTON PARK

October 22, 2006 Site Plan

PUBLIC ART UPDATE

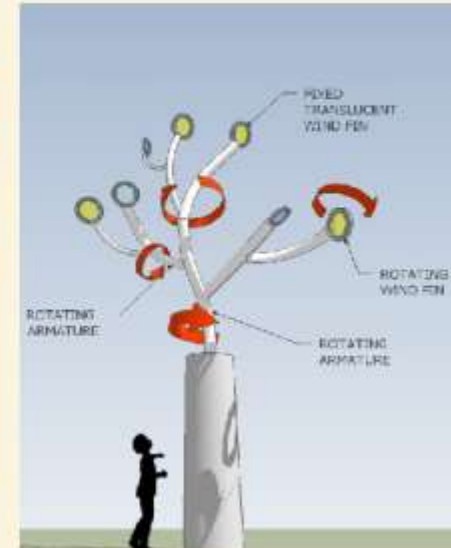
D.H. Stanton Park



BeltLine
Atlanta Connected



The Promise of Peopletown This proposed kinetic artwork is designed to serve as a focal point of the dramatic canopied entrance to Daniel Stanton Park and as the centerpiece of the water playscape plaza itself. The stainless steel sculpture will be centrally located, elevated, and move in a constant state of transformation and symphony of light to fully engage the viewer. As a public art piece it speaks to the progressive vision of ABL, the architects, and most importantly the community of Peopletown. Bearing the "fruit" of promise and optimism, the abstracted, modern tree of life sculpture is befitting to a youth-centered park that will nurture the next generation of future leaders of the Peopletown community.



As representative of an expansive artwork, the sculpture will aim to encourage interaction with children in the play environment. The refractory rainbow of color traversing the plaza will surely beckon children to chase the dancing light and prisms. It is also anticipated the movement of the artwork will be initiated not solely by wind power but also hand-driven by an interactive mechanism when the winds are still.

A PROPOSAL FOR D.L. STANTON PARK

robert witherspoon



PUBLIC ART UPDATE

D.H. Stanton Park

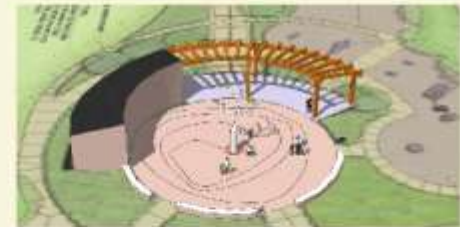
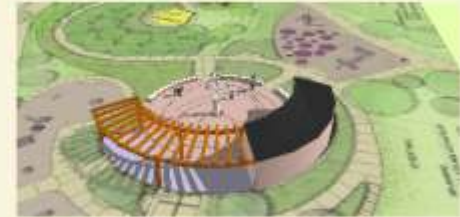


BeltLine
Atlanta Connected



Site specific, the artwork will identify with the built environment of Daniel Stanton Park on a multitude of levels. It is designed to relate to all ages while simultaneously encouraging play. The artwork is informed by the colorful water playscape and the spiraling trails and playscapes throughout the park. Physics, light, and movement all interact to bring this sculptural centerpiece to life. Activated by natural elements of wind and light, it is complimentary to the park's alternative energy theme and solar panels featured on the entrance path.

The proposed sculpture will be ornamented with colorful laminated "lexan" plastic discs. The vibrant discs will be made from a specialized plastic 100 times stronger than glass and virtually shatterproof. Therefore, the sculpture will be built to withstand the elements and most types of vandalism, including impact. I consider art maintenance and longevity a serious priority.



THE PROMISE OF PEOPLESTOWN

robert witherspoon



ART ON THE BELTLINE

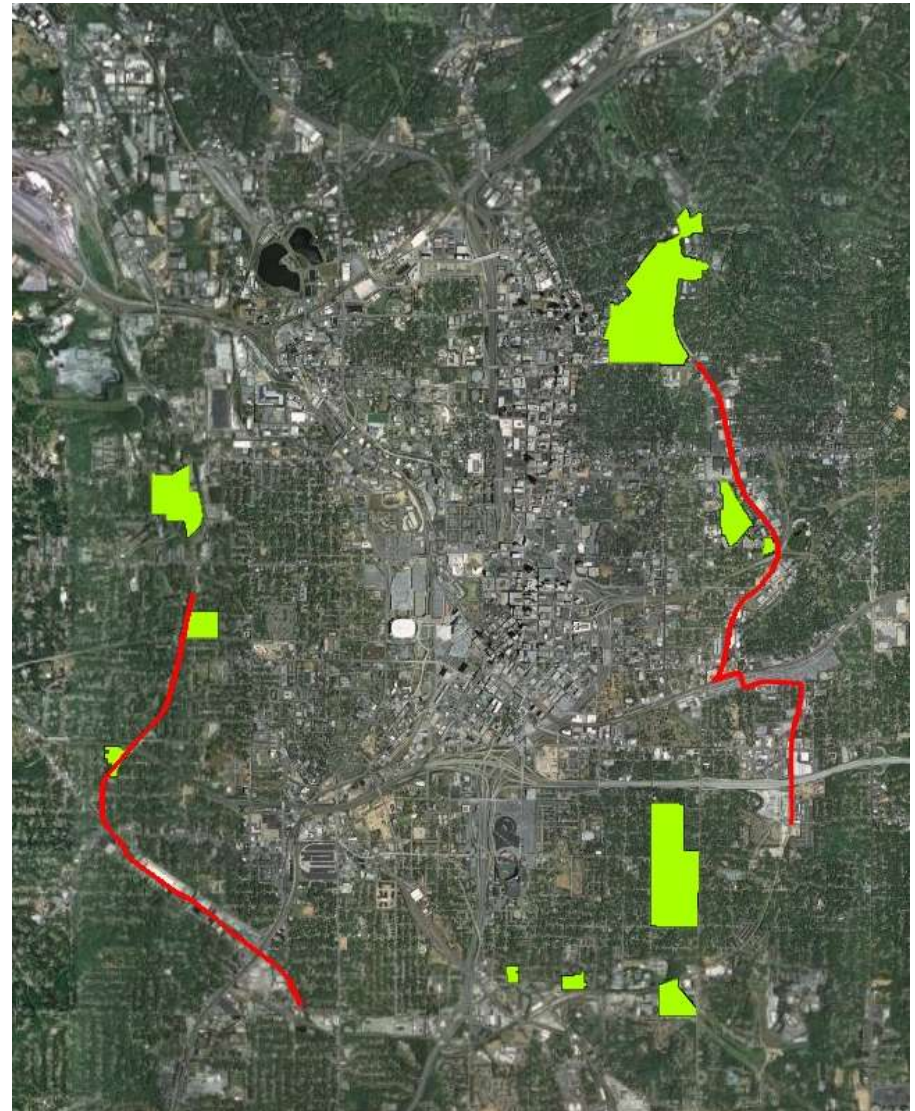
Temporary Art Project on Hiking Trails



BeltLine
Atlanta Connected



- Volunteer Advisory Committee and Working Group
- Representatives from Arts community and neighborhoods
 - Fulton County Arts Council
 - Office of Cultural Affairs
 - WonderRoot
 - Eyedrum
 - SCAD
 - FLUX Projects
 - MAPAC
 - MAACC
- 30-40 Temporary Art Installations & Performances
- May – October 2010



ART ON THE BELTLINE

Temporary Art Project on Hiking Trails



BeltLine
Atlanta Connected



ART ON THE BELTLINE

Call for Artists



BeltLine
Atlanta Connected

Submissions due March 12, 2010 at 4 pm!

art.beltline.org



request for
proposals



- + details +
- + Visual and sculptural installations, performance art, interactive works, and more!
- + June - October
- + 30 - 40 temporary works will be awarded and installed throughout eight miles of the BeltLine corridor
- + Award levels of \$1000, \$3000, and \$5000
- + Submission deadline: March 12
- + Walking tours of the BeltLine corridor every Saturday at 12 noon
- + Visit art.beltline.org for more information

Atlanta BeltLine, Inc.

Quarterly Briefing

Agenda

- Welcome & Open House
- ABI CEO Update
- Community Engagement Report
- Design & Construction Update
- Public Art Update
- BeltLine Partnership Update
- Q&A

March 4, 2010

BELTLINE PARTNERSHIP

Update – March 2010



BeltLine
Atlanta Connected

- BeltLine Capital Campaign
- Awareness & Education
 - BeltLine Ambassadors
 - Student Engagement
 - Community Events
 - beltline.org
 - Festivals
 - Tours
 - Speakers Bureau
- Addressing Social Impacts
 - Atlanta Land Trust Collaborative



Atlanta BeltLine, Inc.

Quarterly Briefing

Agenda

- Welcome & Open House
- ABI CEO Update
- Community Engagement Report
- Design & Construction Update
- Public Art Update
- BeltLine Partnership Update
- Q&A

March 4, 2010