

Transit Route Options and MARTA Connectivity Assessment – Wrap-Up

Atlanta BeltLine East and
North Avenue/Luckie Street
Citywide Conversation August 21, 2014



- **Open House (30 minutes)**
- **Today's Agenda:**
 - Community Engagement background
 - Provide overview of design options/routes to be evaluated in Environmental Assessments
 - Questions & Answers
 - Next steps
- **Adjourn**

Citywide Conversation

How we have engaged the community to date



Atlanta
BeltLine



ATLANTA STREETCAR

Participation – Provide your input during the Open House

Guidance – Provide input for potential benefits and impacts for streetcar along these routes

Feedback – Ask questions and provide comments after the presentation

Support – Receive a schedule outlining project timeline

Project Schedule

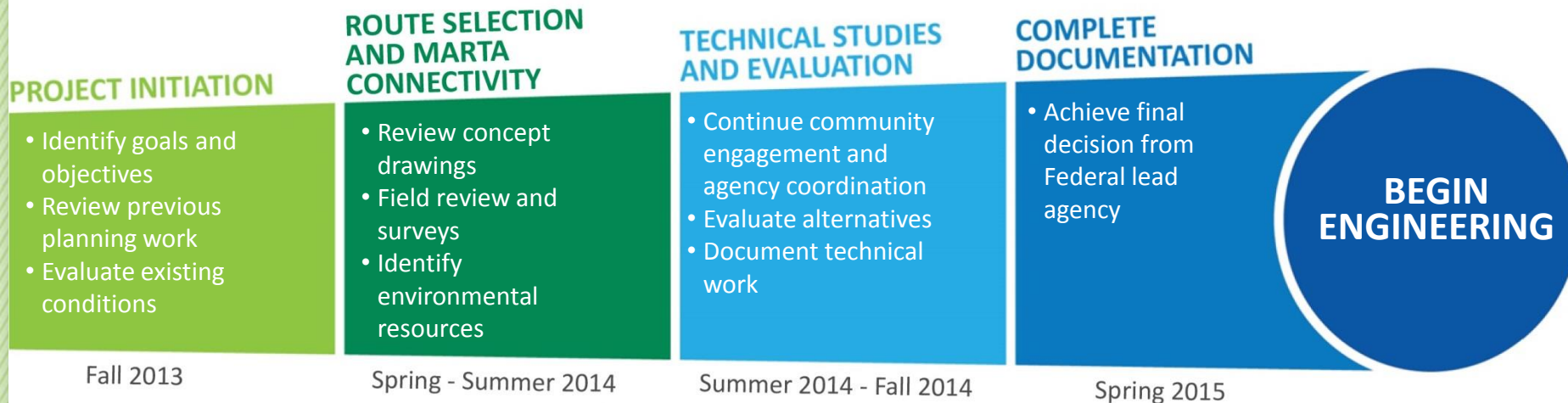
Environmental Review Process Timeline



Atlanta
BeltLine



ATLANTA STREETCAR

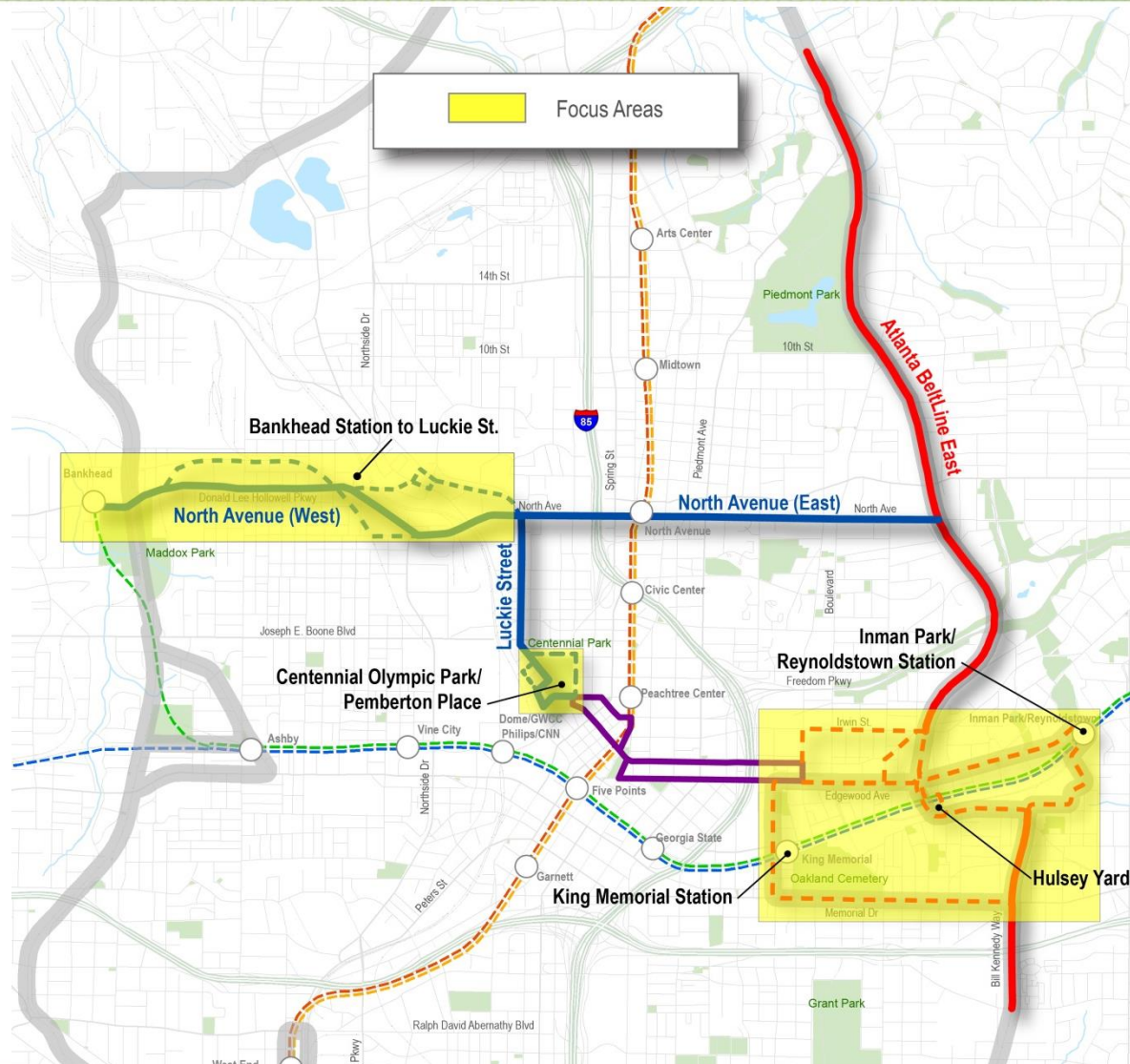


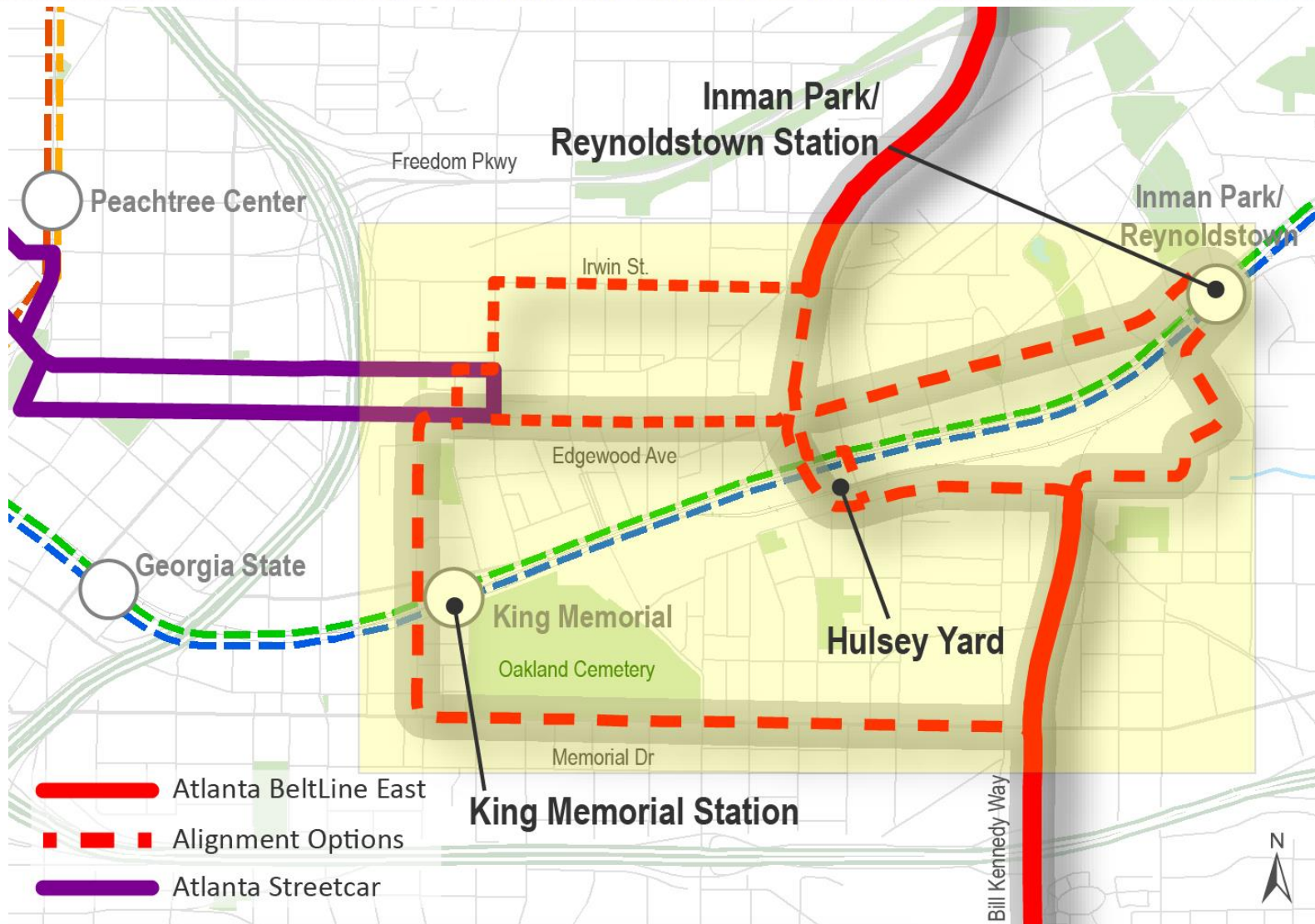
This schedule is subject to change. Please check the website (<http://beltline.org/events/>) for other community engagement opportunities associated with the environmental review process.

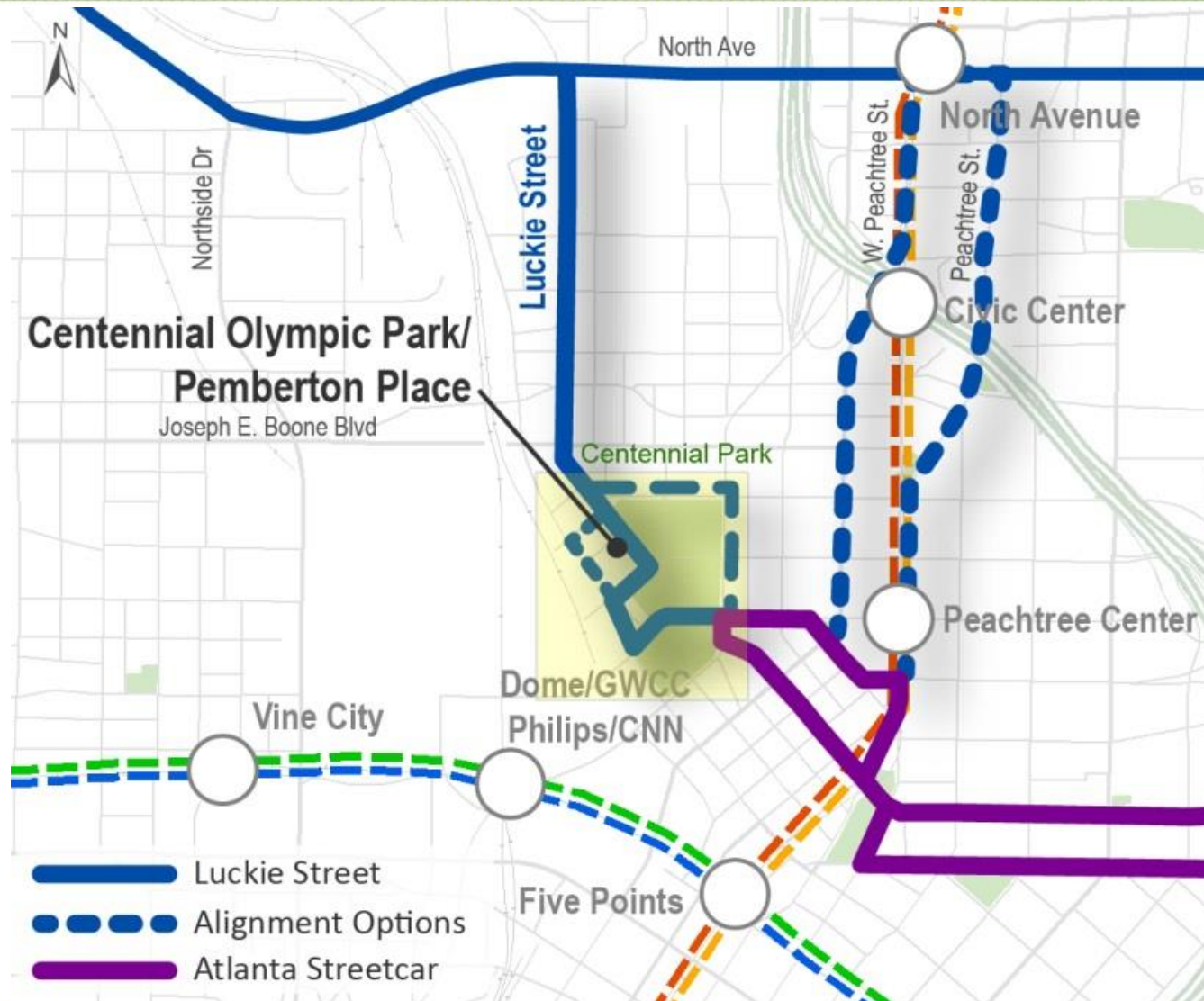


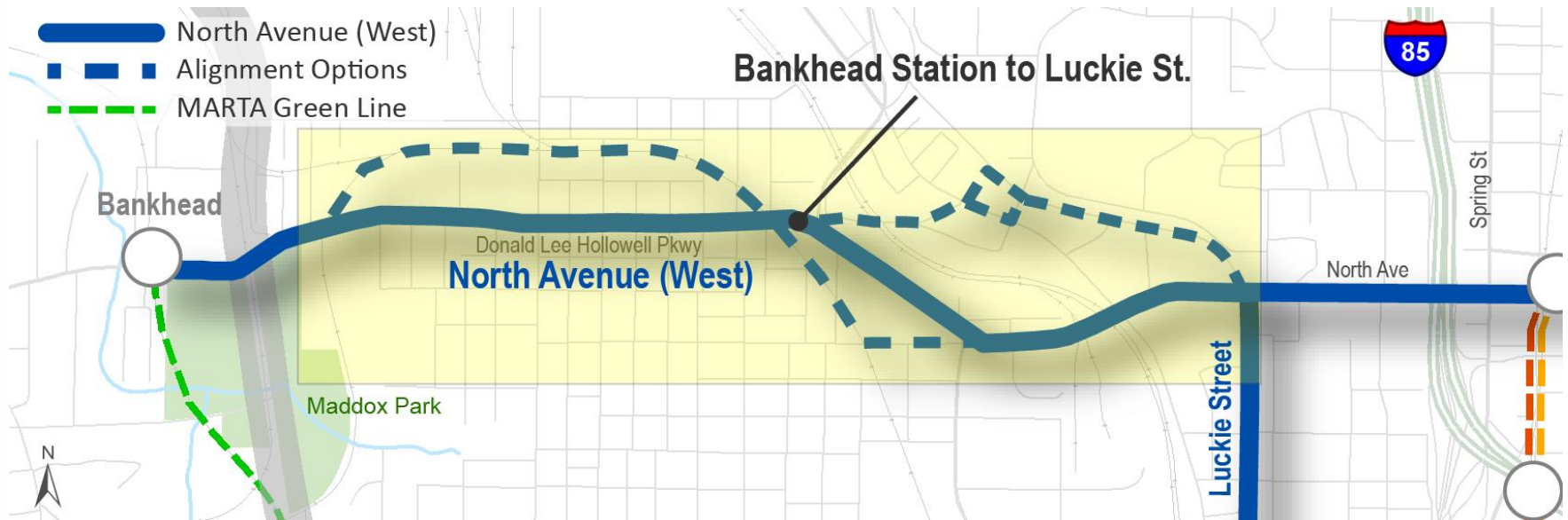
Design Options/Routes to be Evaluated in Environmental Assessments

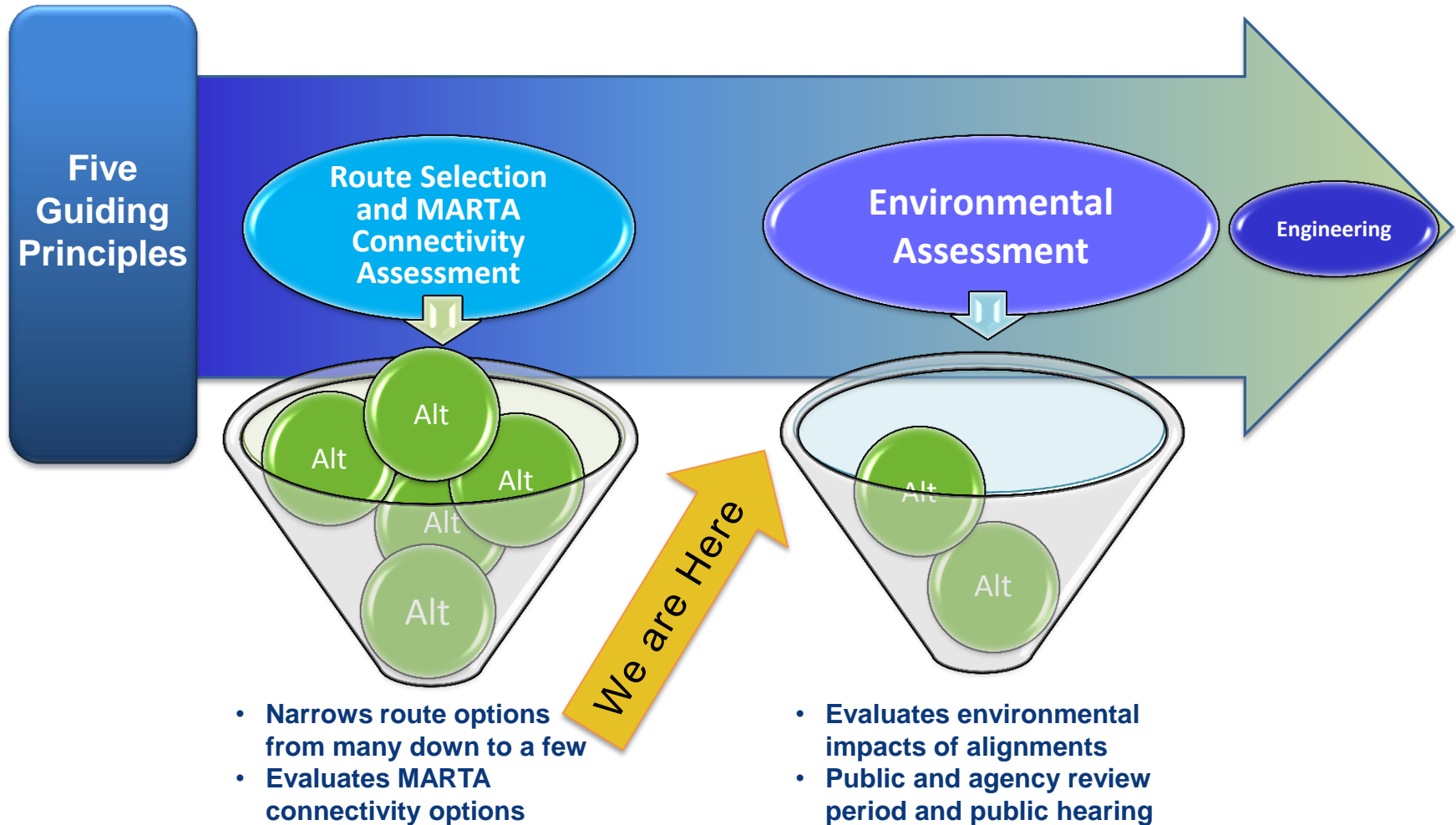
Atlanta BeltLine East and
North Avenue/Luckie Street













- Steps in Screening Process:

- Determine full range of design options/routes
- Develop initial screening criteria to evaluate against the Five Guiding Principles
- Apply criteria to the full range of design options/routes
- Advance best performing (**green/good** in the evaluation matrices) design options/routes into more detailed study in Environmental Assessments



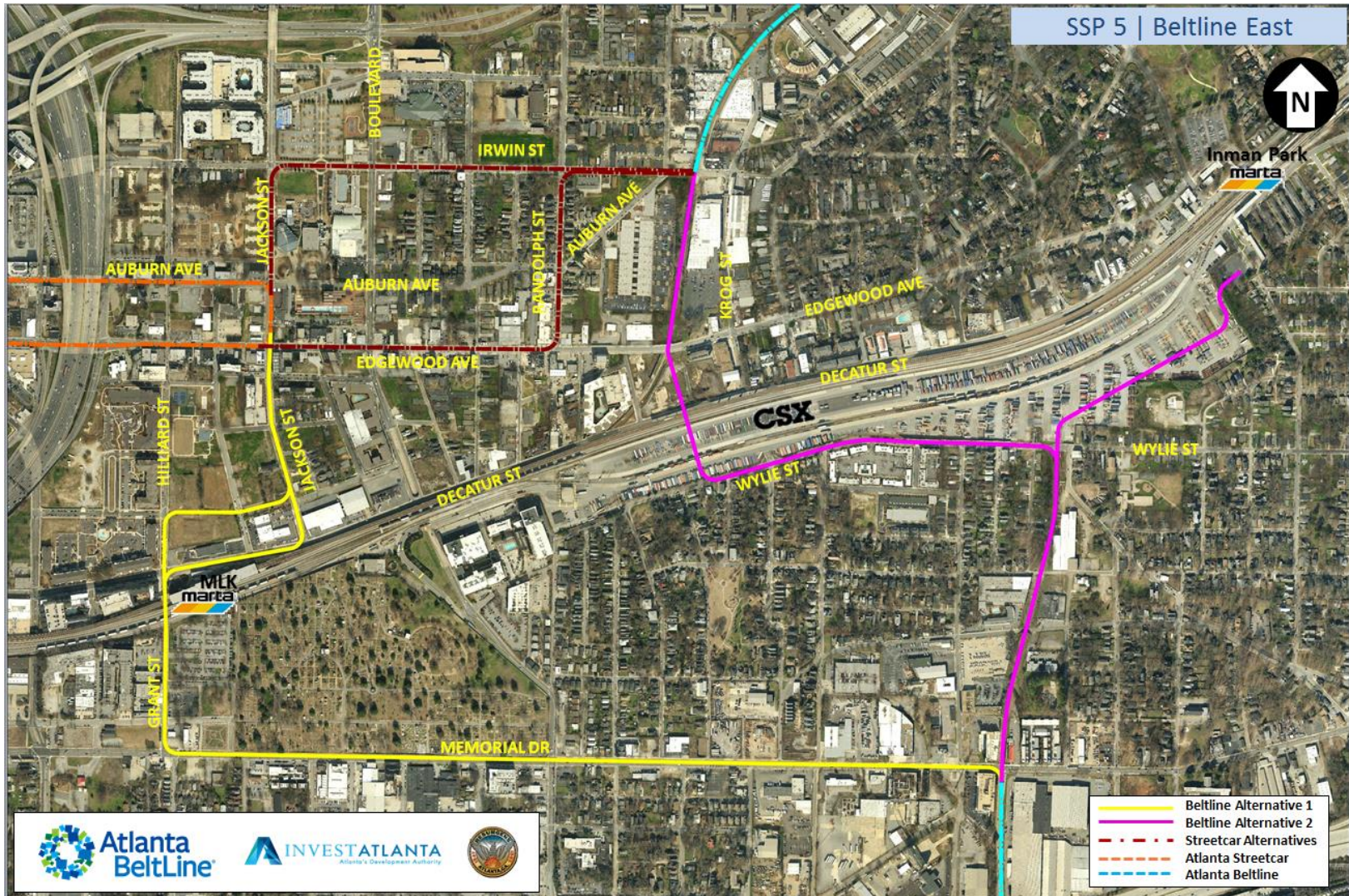
- **Comment summary from previous meetings:**
 - Support for connection to King Memorial MARTA station
 - Some support for Tech Parkway connection to Northside Drive
 - Some support for Peachtree Street connection to North Avenue
 - Some concern for adverse traffic impacts along North Avenue
 - Strong opposition to use of Krog Street tunnel for transit

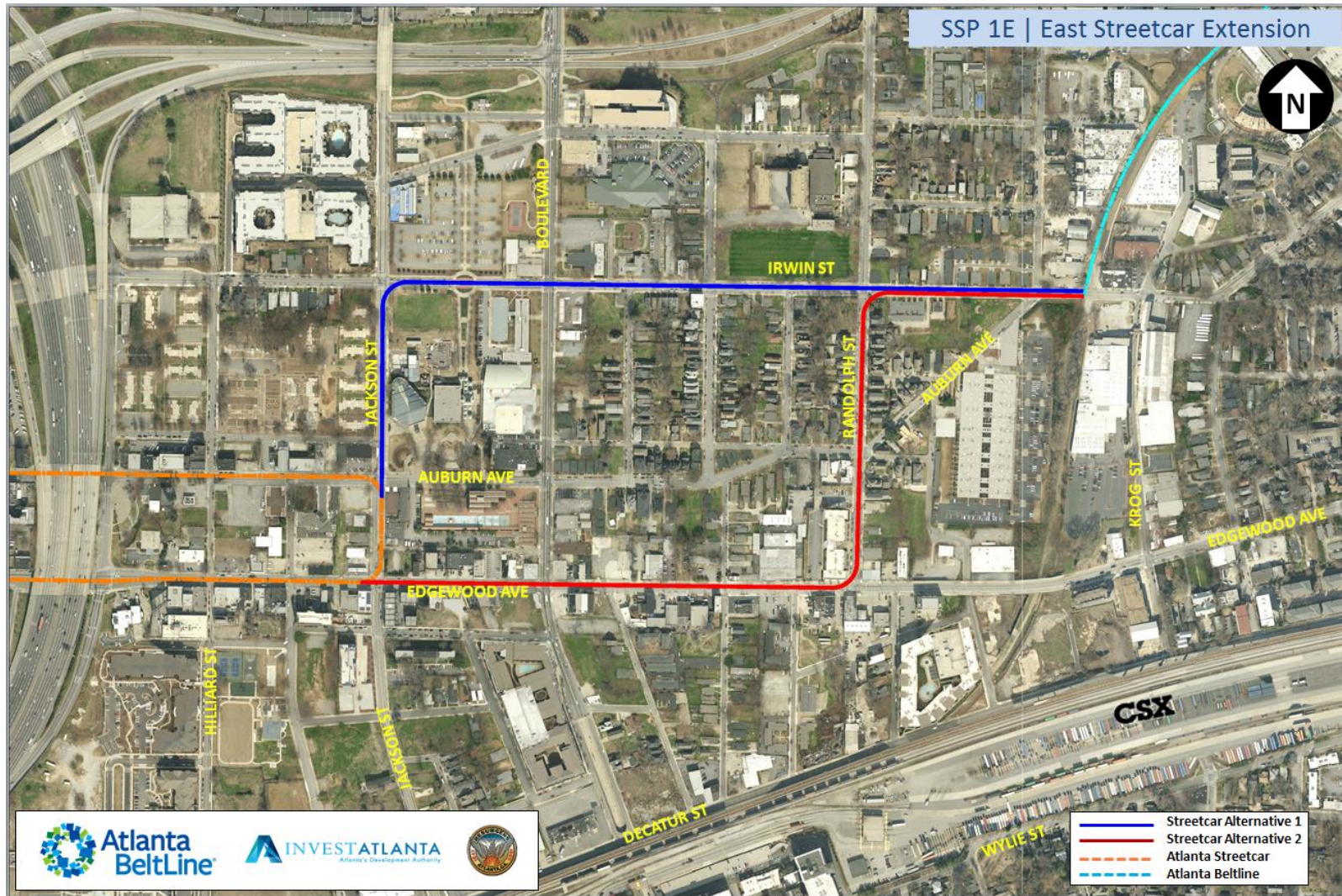


SSP 5 | Beltline East



Inman Park
marta

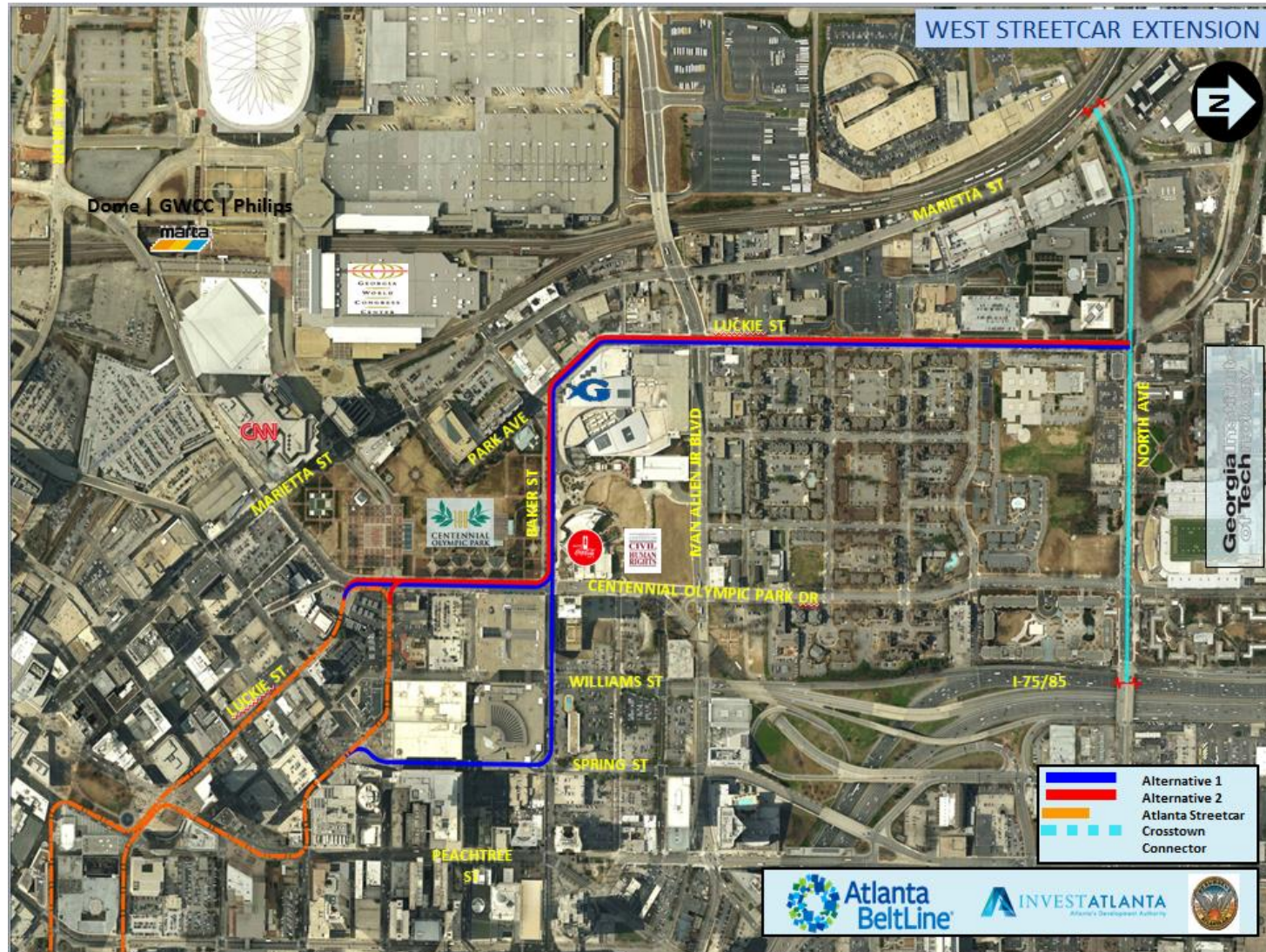






Focus Area	Design Option	Overall Rating
CSX Hulsey Intermodal Yard	Connect to Inman Park-Reynoldstown MARTA station and new tunnel under or new flyover bridge over CSX Hulsey Intermodal Yard	POOR
	Connect to King Memorial MARTA station and continue from Hilliard Street to Grant Street tunnel/underpass and along Memorial Drive to Bill Kennedy Way	GOOD
	Construct new tunnel under CSX Hulsey Intermodal Yard with spur connection to Inman Park-Reynoldstown MARTA station	GOOD
	Repurpose Krog Street tunnel for streetcar transit with spur connection to Inman Park-Reynoldstown MARTA station	FAIR

Focus Area	Design Option	Overall Rating
Atlanta Streetcar Connection to BeltLine East	Jackson Street to Irwin Street	FAIR
	Edgewood Avenue – Randolph Street – Irwin Street	FAIR



Transit Route Options and MARTA Connectivity Assessment

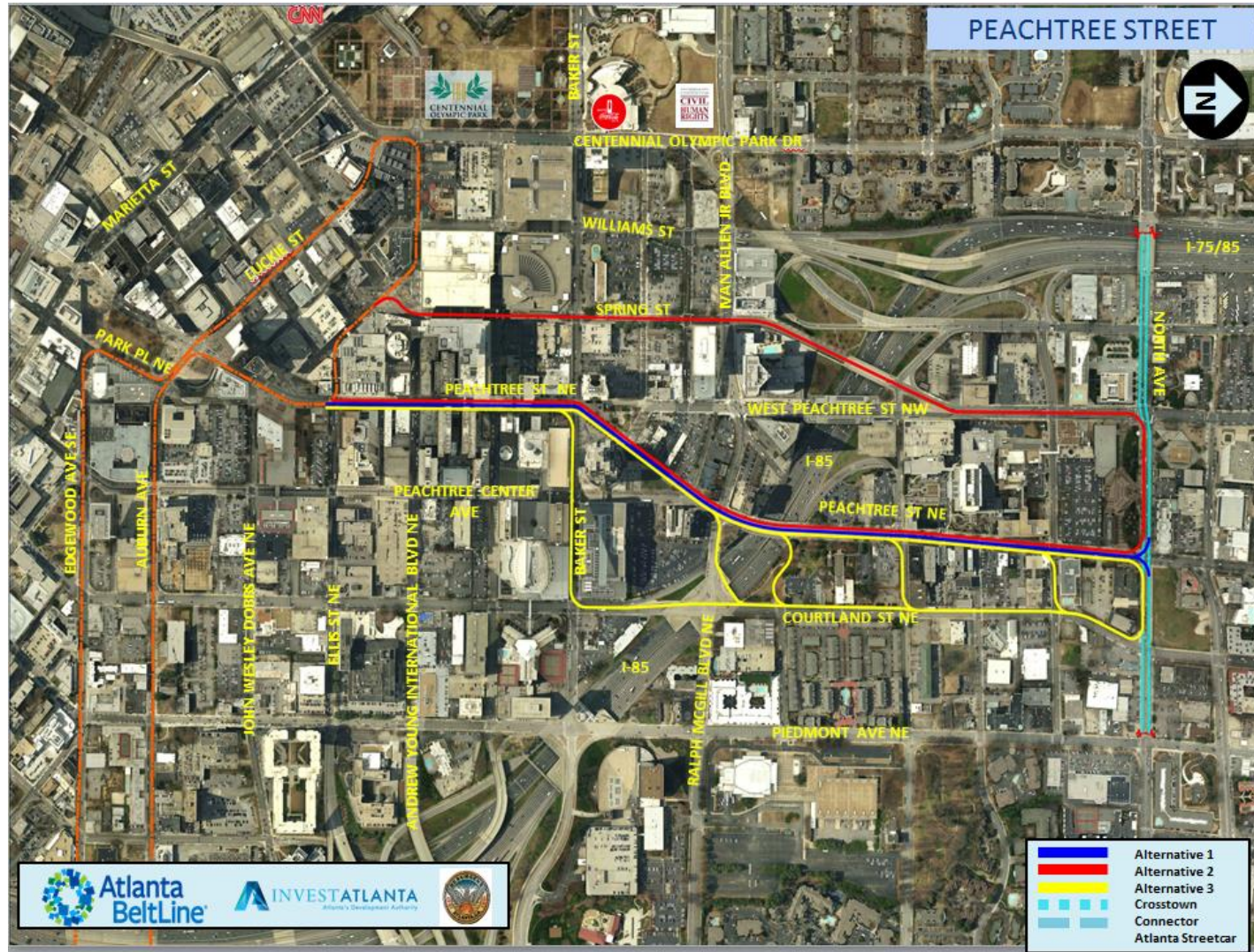
Centennial Olympic Park/Luckie Street Focus Area – Peachtree Alignments



Atlanta
BeltLine

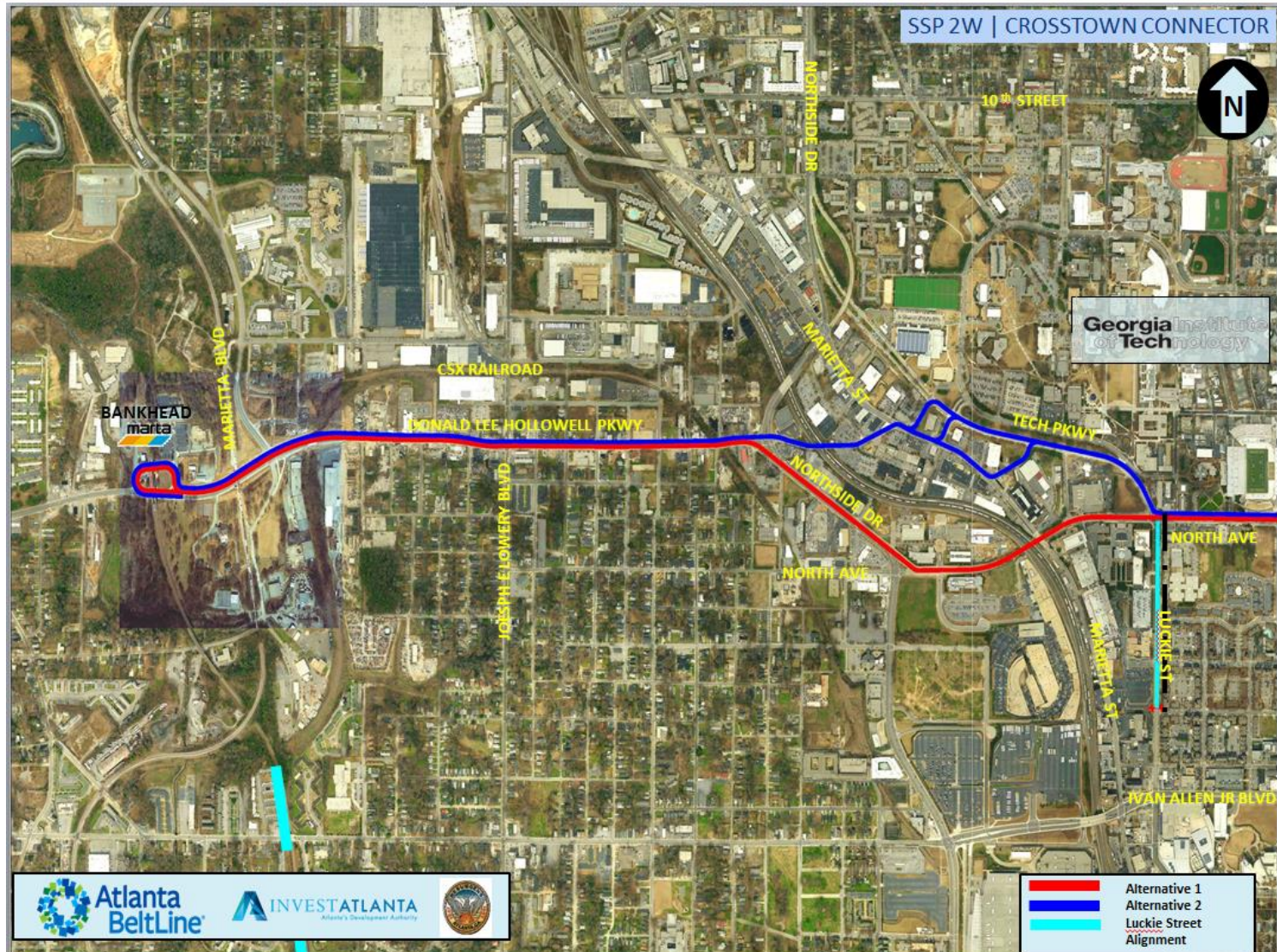


ATLANTA STREETCAR





Focus Area	Design Option	Overall Rating
<i>Connection to North Avenue</i>	Marietta Street to Luckie Street (west side of Centennial Olympic Park)	FAIR
	Baker Street to Luckie Street (east side of Centennial Olympic Park)	GOOD
	Andrew Young International Boulevard through Centennial Olympic Park to Luckie Street	FAIR
	Marietta Street to North Avenue	FAIR
	Peachtree Street	GOOD
	West Peachtree Street/Peachtree Street single-track pair	GOOD





Focus Area	Design Option	Overall Rating
<i>North Avenue west of Luckie Street to Bankhead MARTA Station</i>	CSX railroad right-of-way	POOR
	Tech Parkway	GOOD
	North Avenue to Donald Lee Hollowell Parkway	POOR
	Northside Drive to Donald Lee Hollowell Parkway	GOOD



Atlanta
BeltLine



ATLANTA STREETCAR

Questions & Answers

Atlanta BeltLine East and
North Avenue/Luckie Street

Contact Information



Atlanta
BeltLine



Jonathan Lewis, AICP

Interim Assistant Director of Planning - Transportation

City of Atlanta, Department of Planning

JLewis@atlantaga.gov

Kwadwo Atta

Senior Transit Project Manager

Atlanta BeltLine, Inc.

KAtta@atlbeltline.org

Beth McMillan

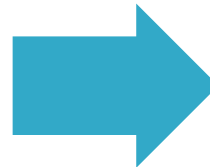
Director of Community Engagement and Planning

Atlanta BeltLine, Inc.

BMcMillan@atlbeltline.org



What are the next steps?



- Assess public and agency comments and feedback
- Complete *Transit Route Selection and MARTA Connectivity Assessment Report* (Addendum to draft *Atlanta BeltLine/Atlanta Streetcar System Plan*)
- Begin technical work to support Environmental Assessments