

## Transit Routing Options and MARTA Connectivity Assessments

Atlanta BeltLine West

*Westside Study Group: October 6, 2014*

*Southwest Study Group: October 9, 2014*



- **Welcome and Introductions**
- **Today's Agenda:**
  - Schedule
  - Community Engagement Synthesis
  - Phase 1 Screening Results
- **Questions and Discussion**
- **Adjourn**



# Community Engagement Schedule

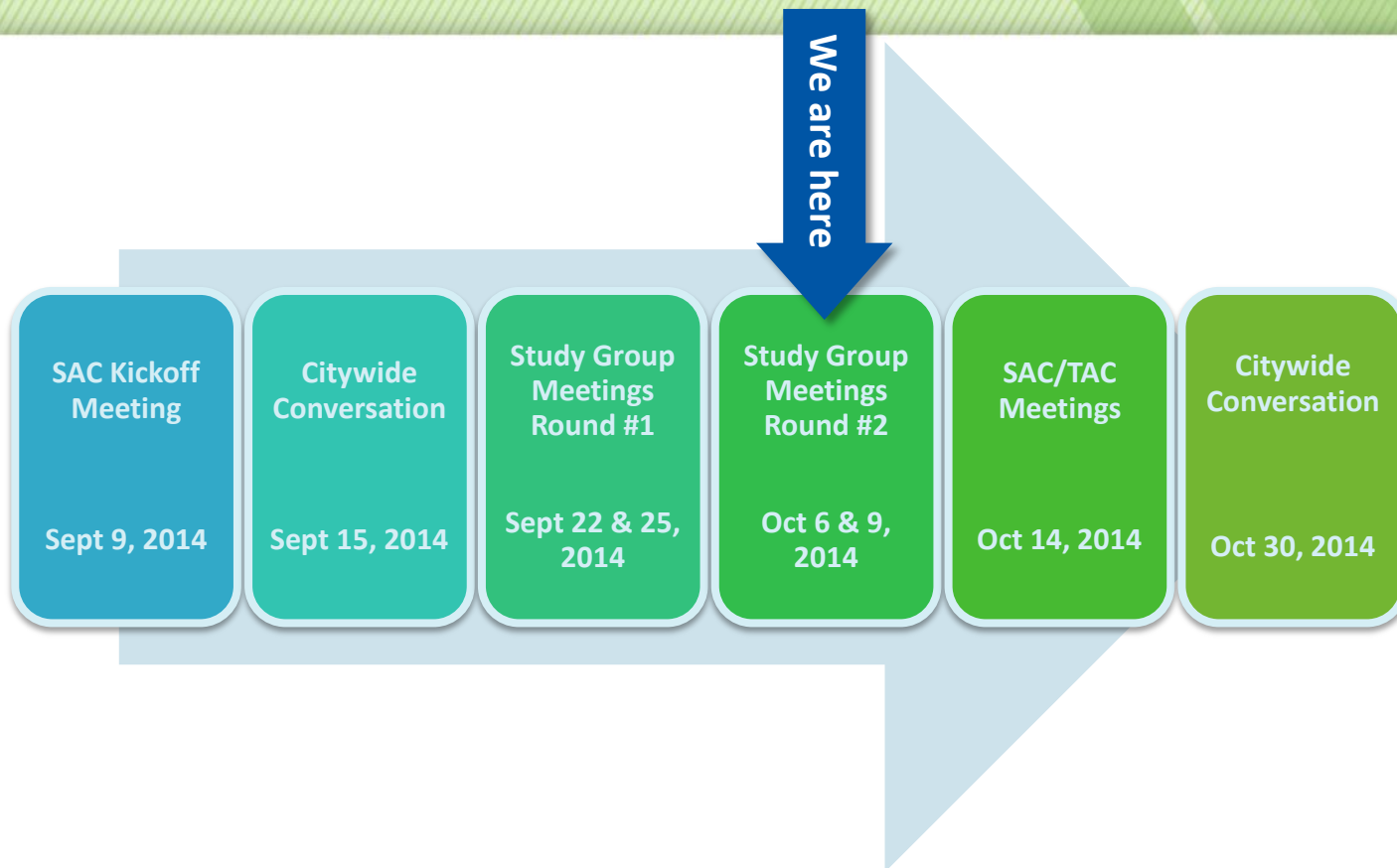
## Summer and Fall 2014



Atlanta  
BeltLine



ATLANTA STREETCAR



**Stakeholder Advisory Committee (SAC):** Advisory committee for each project corridor representing business and property owners, adjacent neighborhoods, and community groups.

**Technical Advisory Committee (TAC):** Advisory committee comprised of representatives with technical and/or environmental expertise.

**Study Groups:** Residents and business owners with an interest in the project within each geographical area.

**Citywide Conversations:** Citywide public meetings are forums to educate the public at large with upcoming plans, policies, and studies.

# Milestone Schedule



Atlanta  
BeltLine



ATLANTA STREETCAR

We are here

Transit Routing  
Options/MARTA  
Connectivity  
Assessments

June 2014 to  
November 2014

Technical Studies  
and Evaluation

September 2014  
to March 2015

Complete Draft  
Environmental  
Assessment (EA)

March 2015

Public/Agency  
Review and  
Public Hearing

April 2015

Finding of No  
Significant  
Impact (FONSI)

May 2015

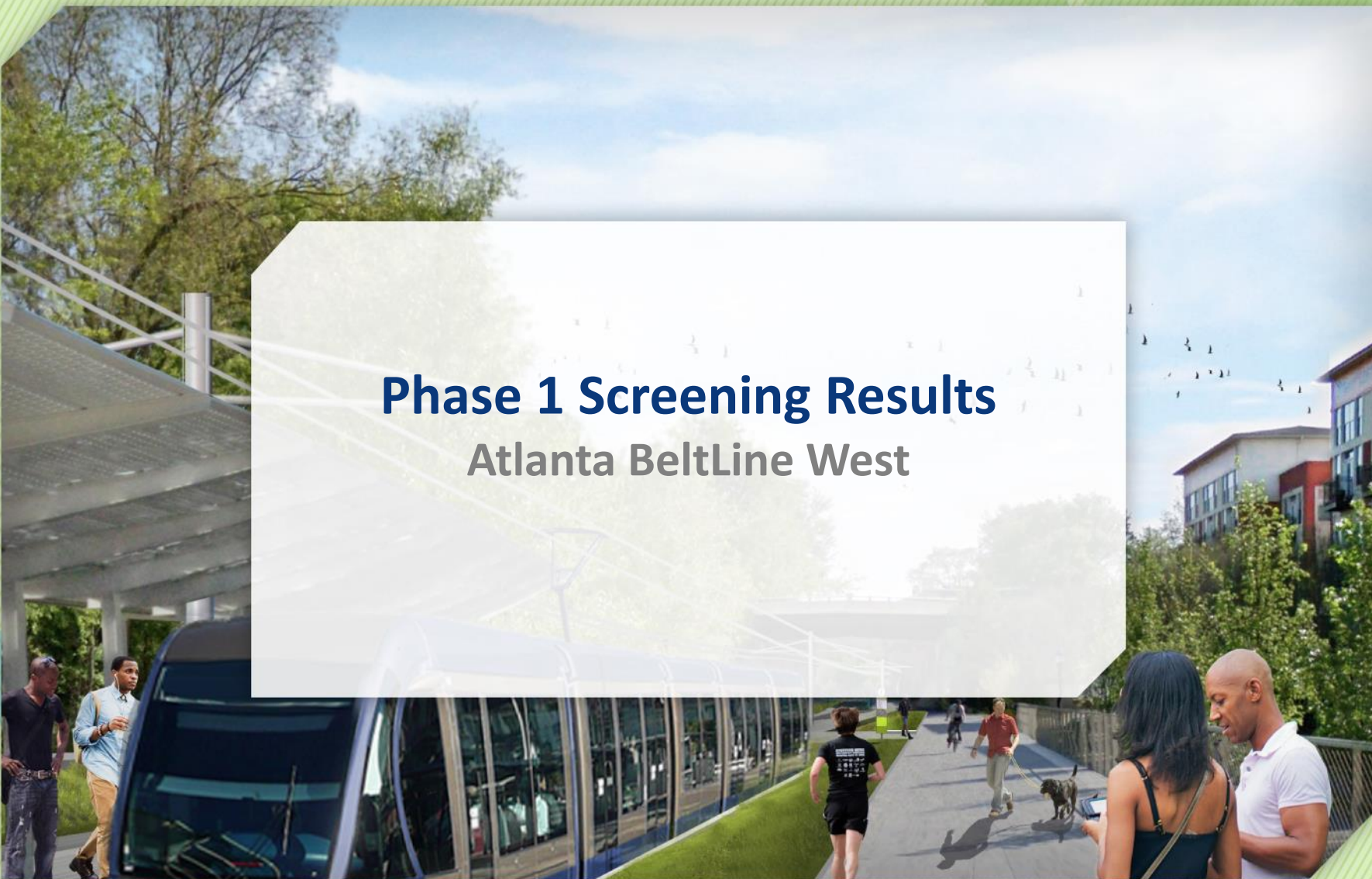
Project  
Development  
(PD) Entry  
Request

Summer 2015



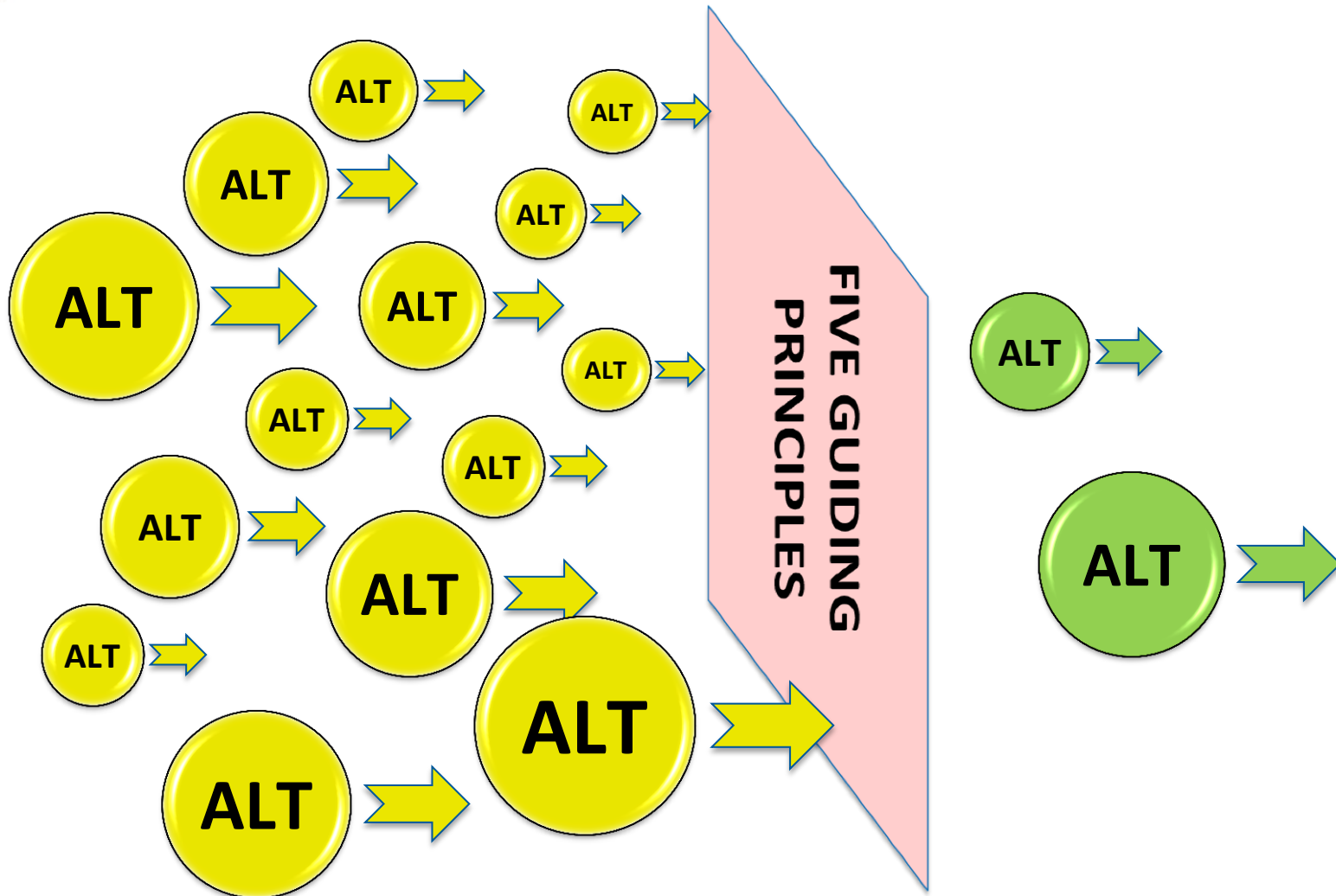



## Phase 1 Screening Results Atlanta BeltLine West



- **Five Guiding Principles**
  - Project Readiness
  - Practicality / Ridership
  - Equity
  - Financial Options
  - Development Impact
- **Shaped from community input during previous transit planning efforts**







## Phase 1 Screening Results MARTA Green Line Connections Atlanta BeltLine West

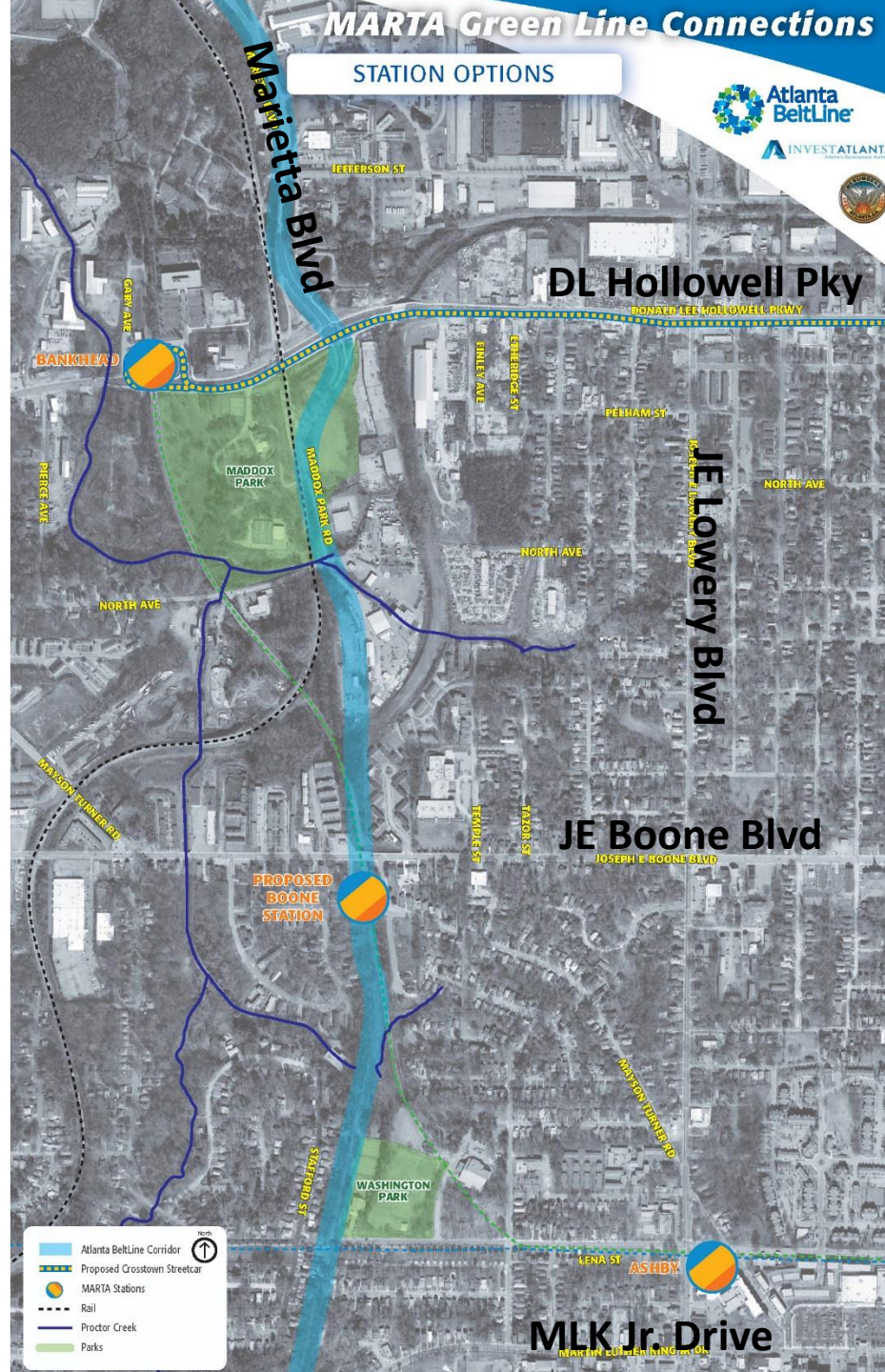


# MARTA Green Line Connections

## STATION OPTIONS



INVESTATLANTA



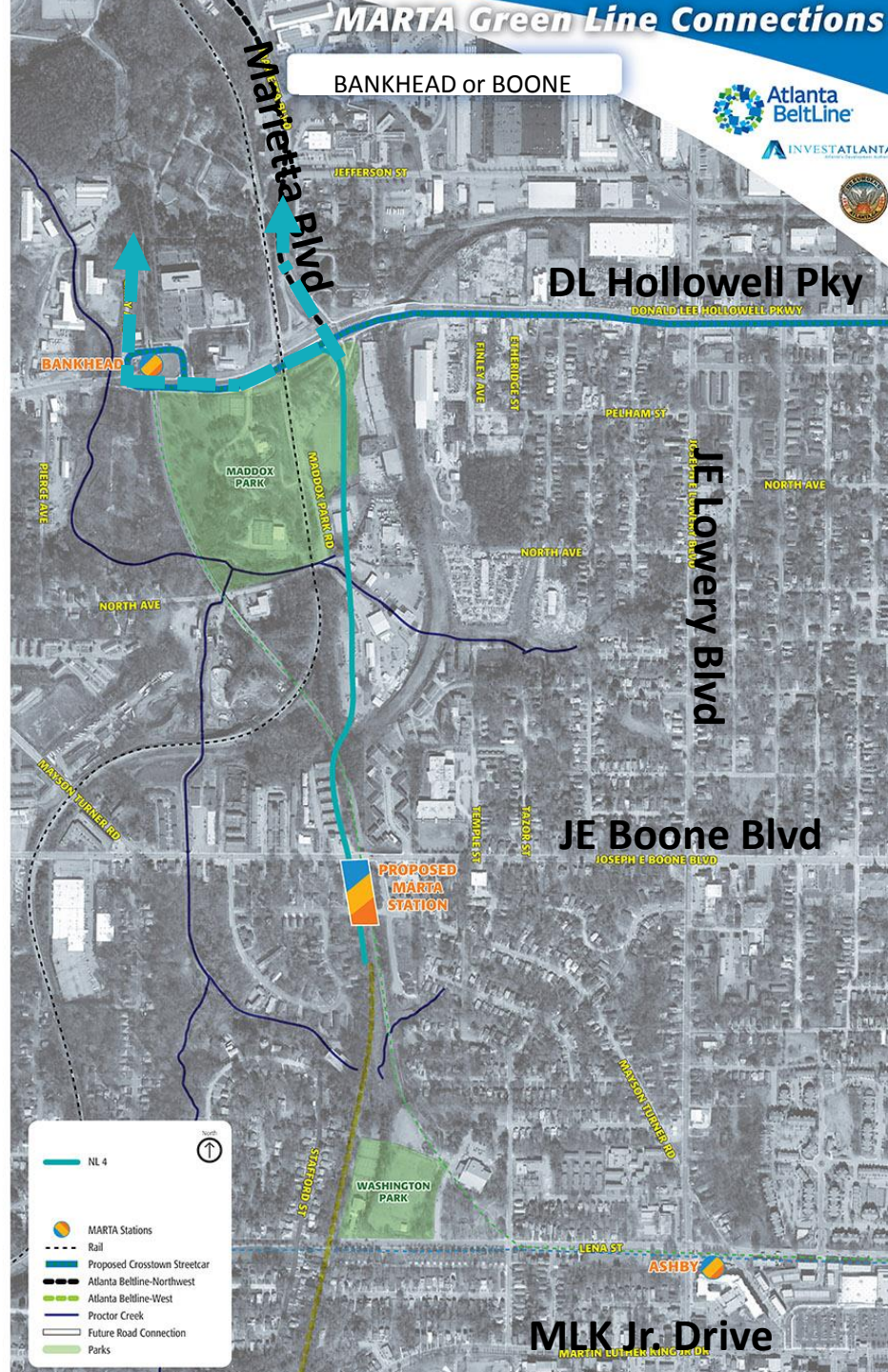


# MARTA Green Line Connections

BANKHEAD or BOONE



INVEST ATLANTA



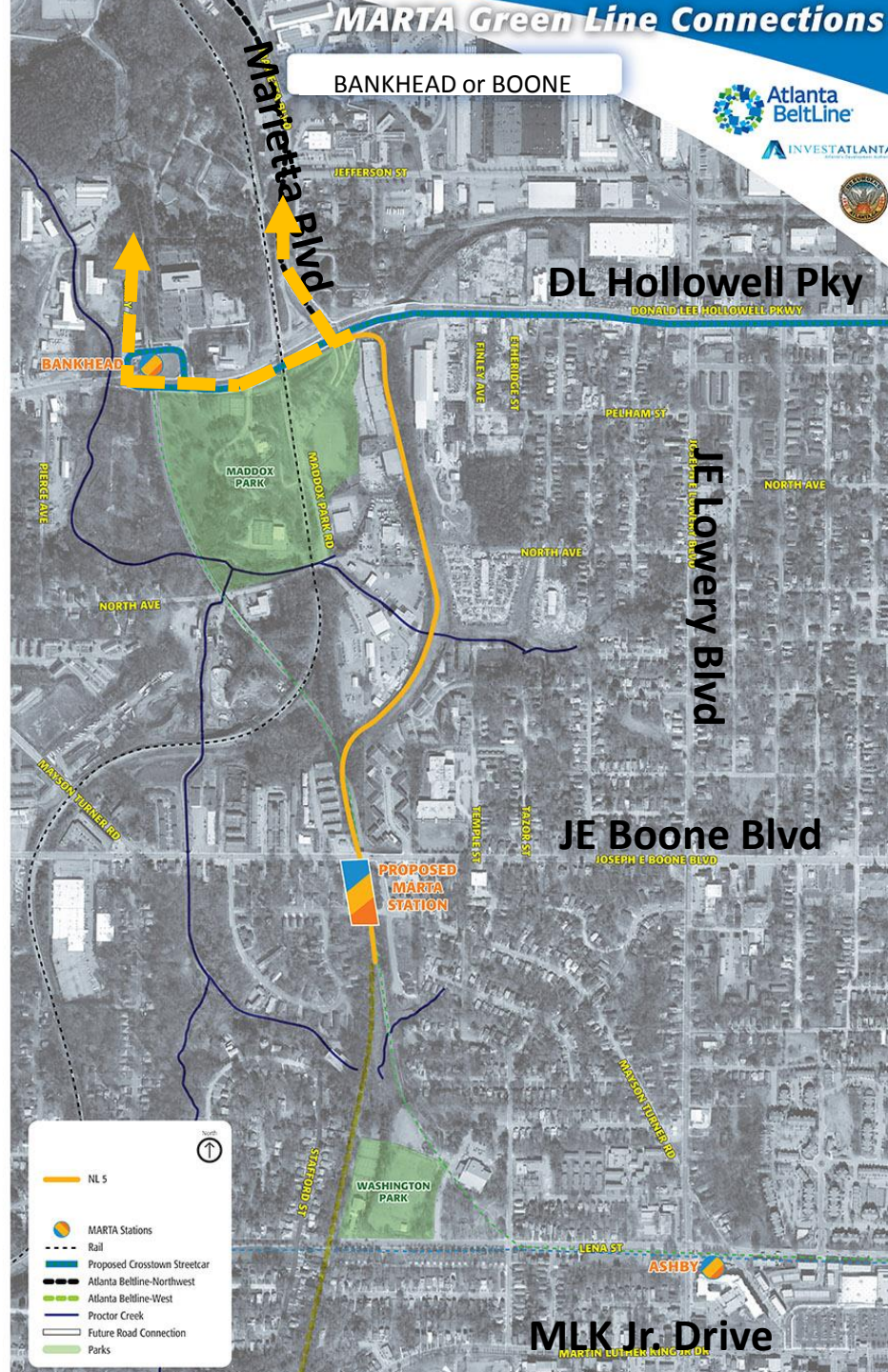


# MARTA Green Line Connections

BANKHEAD or BOONE



INVEST ATLANTA



# Community Engagement

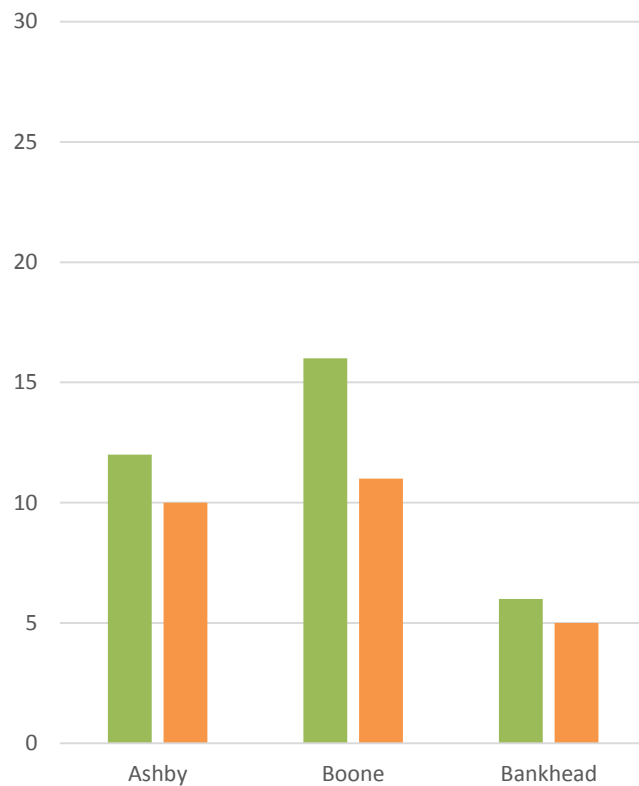
## Phase 1 Dot Exercise Results



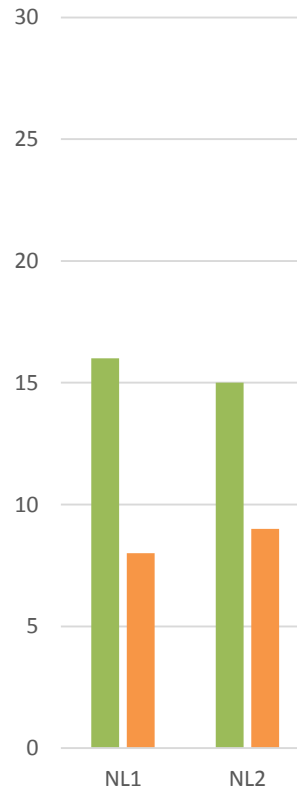
Atlanta  
BeltLine



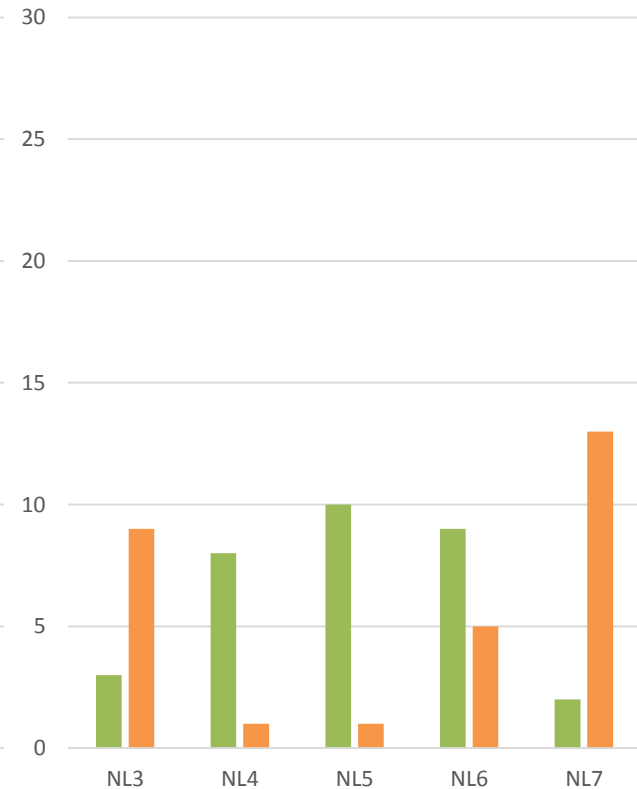
MARTA Green Line  
Station Preference




Bankhead  
Routings



Boone  
Routings





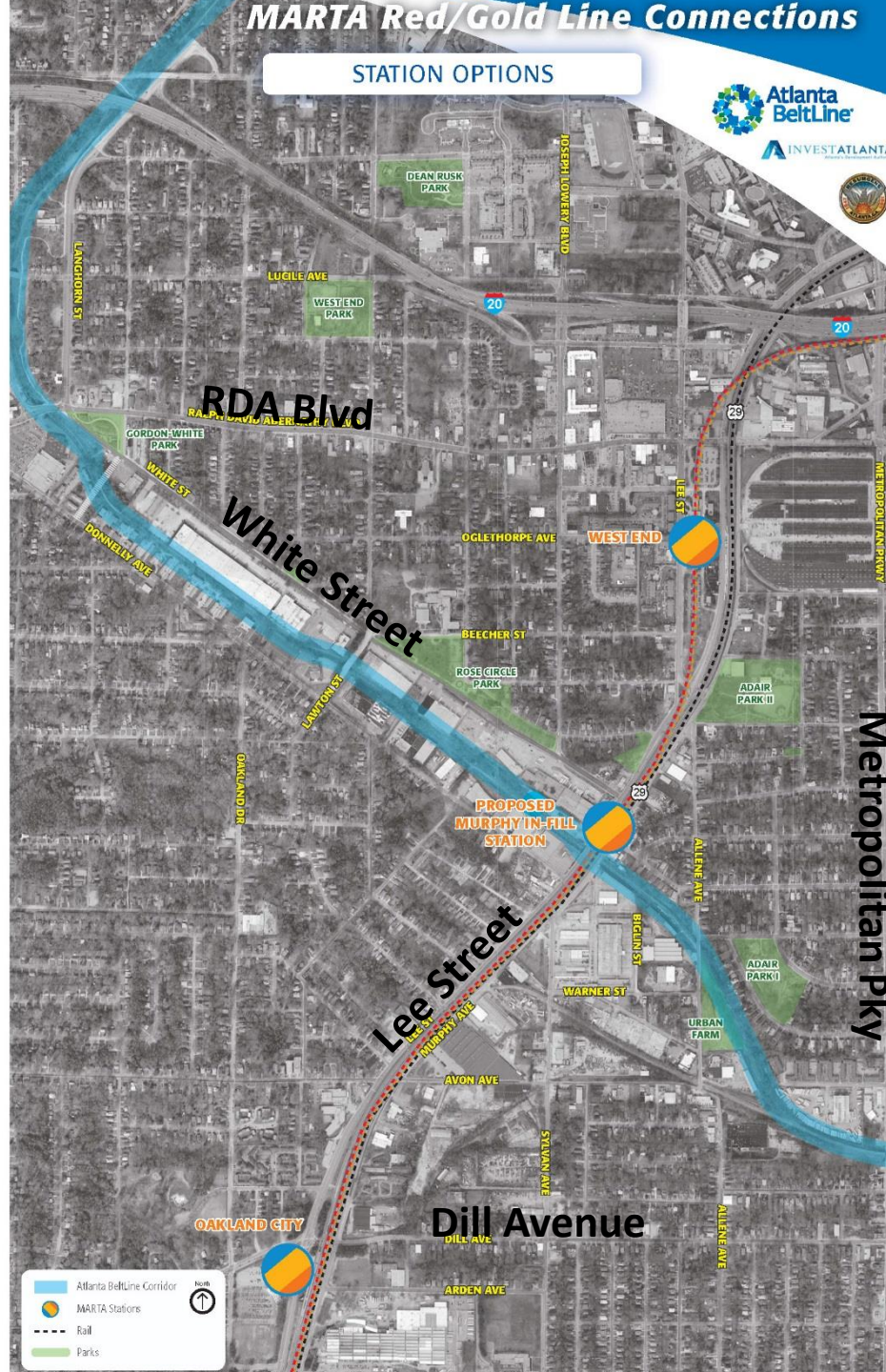


## Phase 1 Screening Results MARTA Red/Gold Line Connections Atlanta BeltLine West



# MARTA Red/Gold Line Connections

## STATION OPTIONS



Metropolitan Pkwy

Atlanta BeltLine Corridor

MARTA Stations

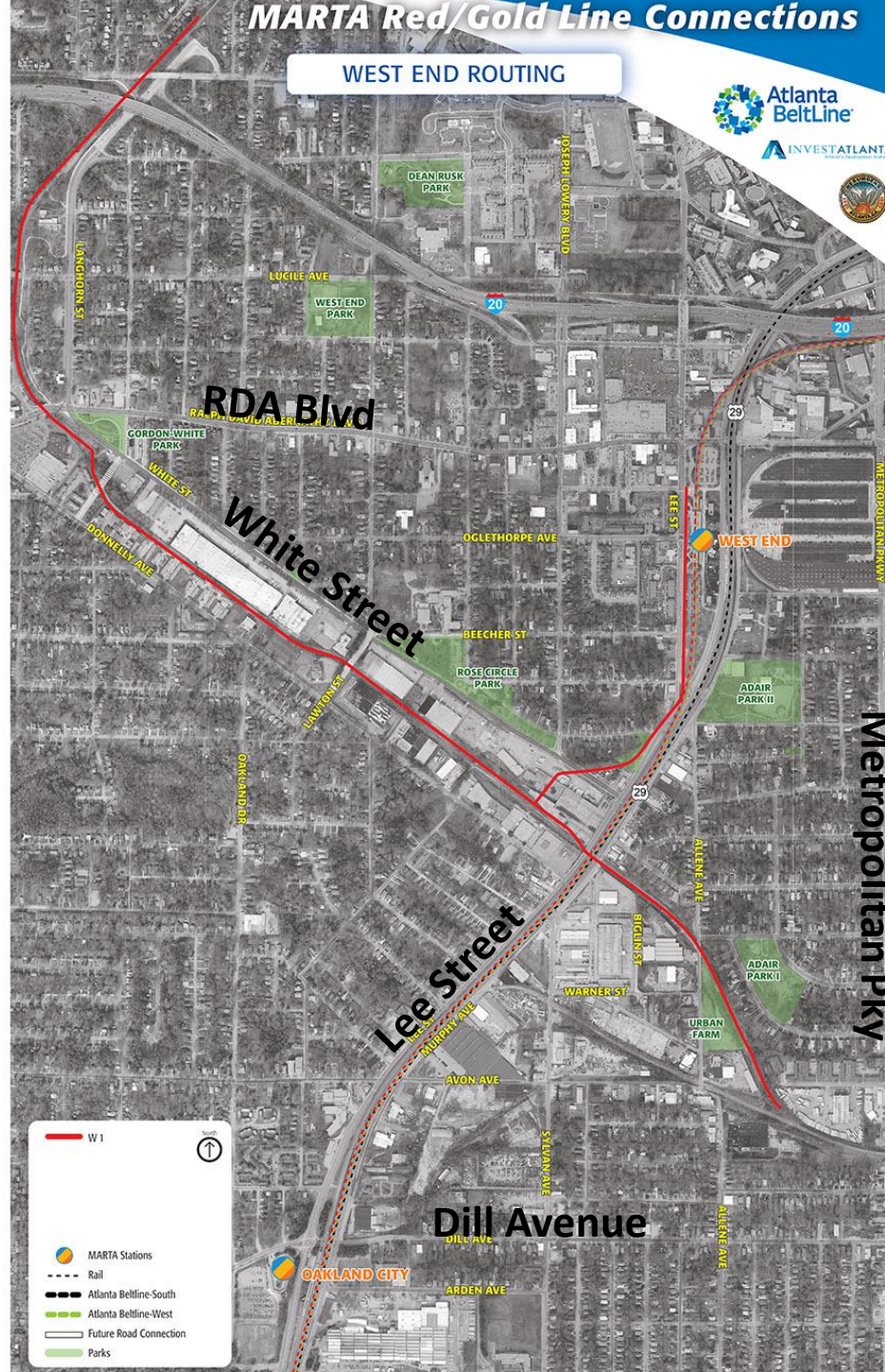
Rail

Parks



# MARTA Red/Gold Line Connections

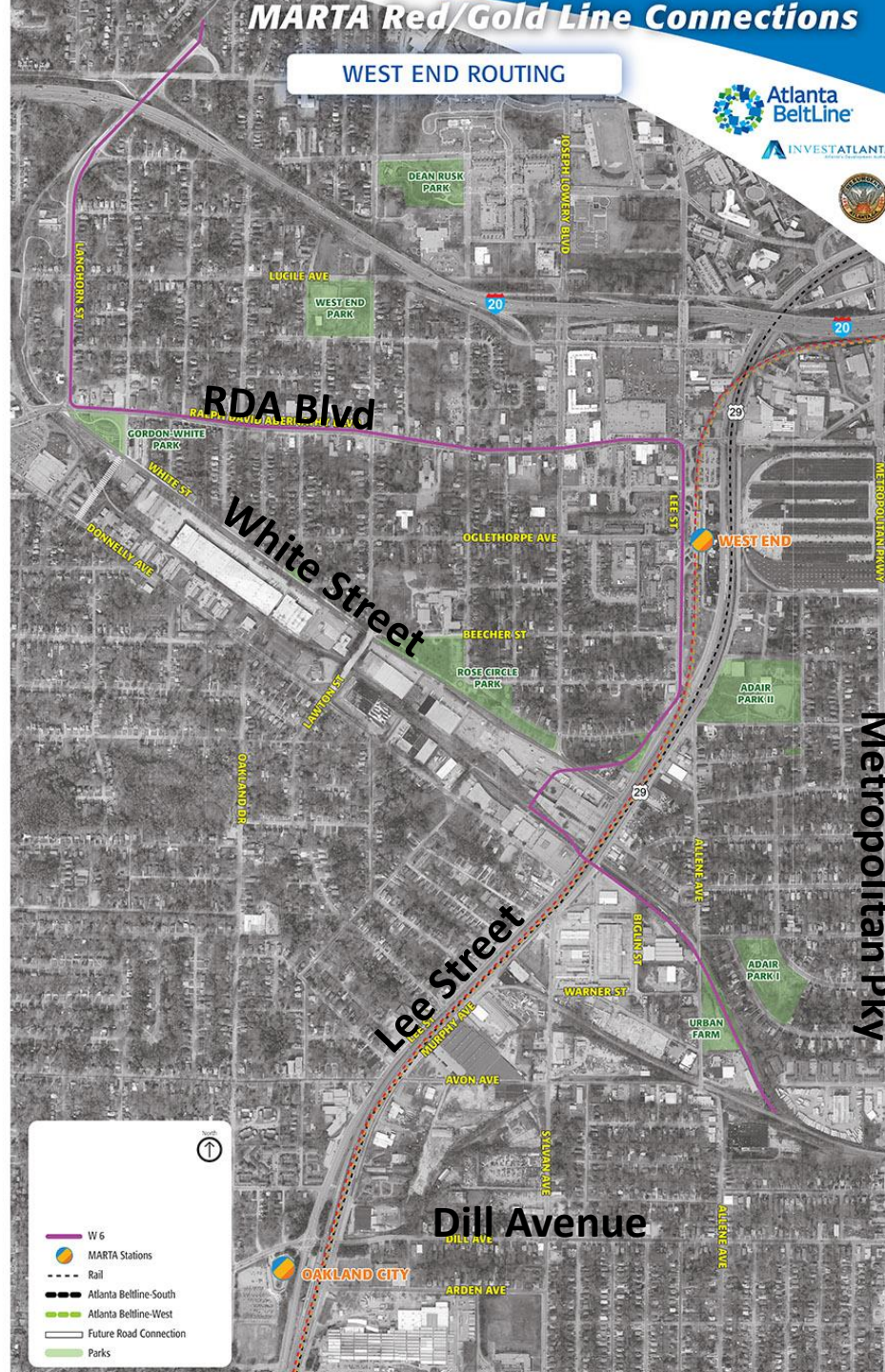
## WEST END ROUTING





# MARTA Red/Gold Line Connections

## WEST END ROUTING





# Community Engagement

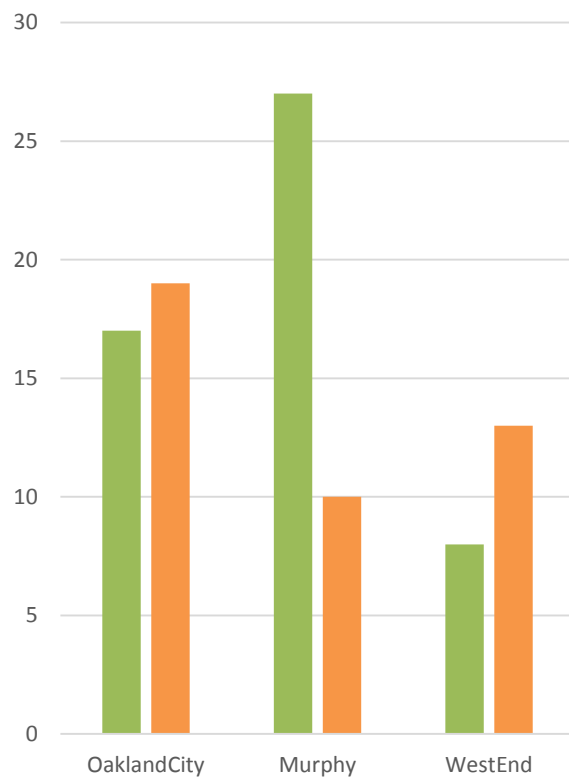
## Phase 1 Dot Exercise Results



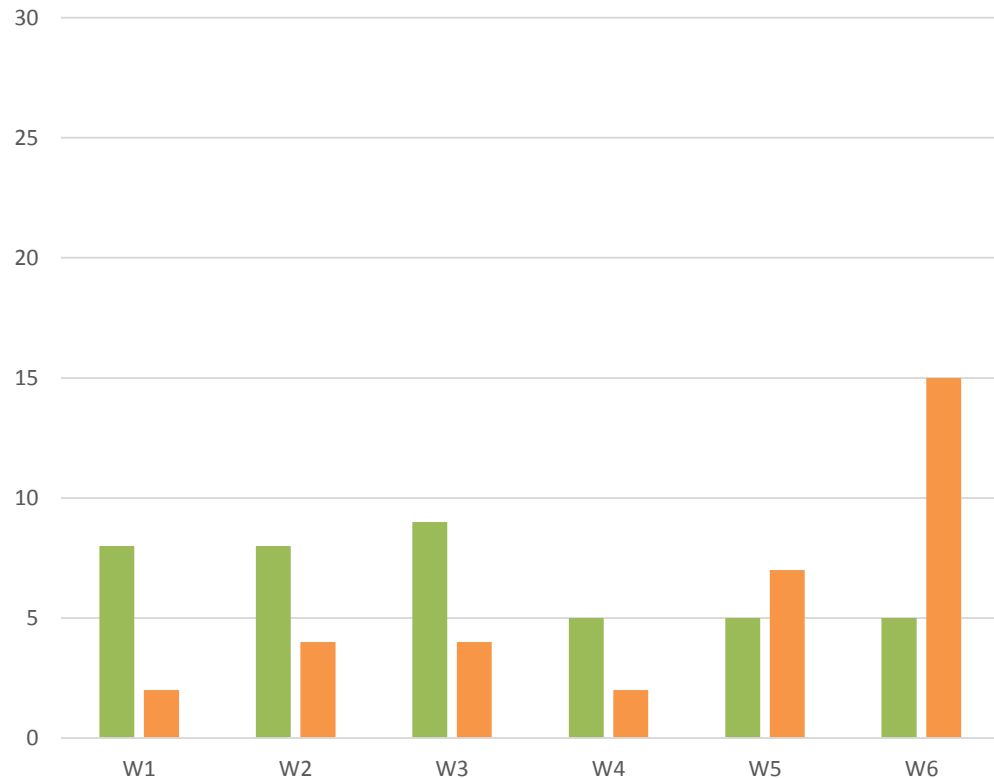
Atlanta  
BeltLine



### MARTA Red/Gold Station Preference

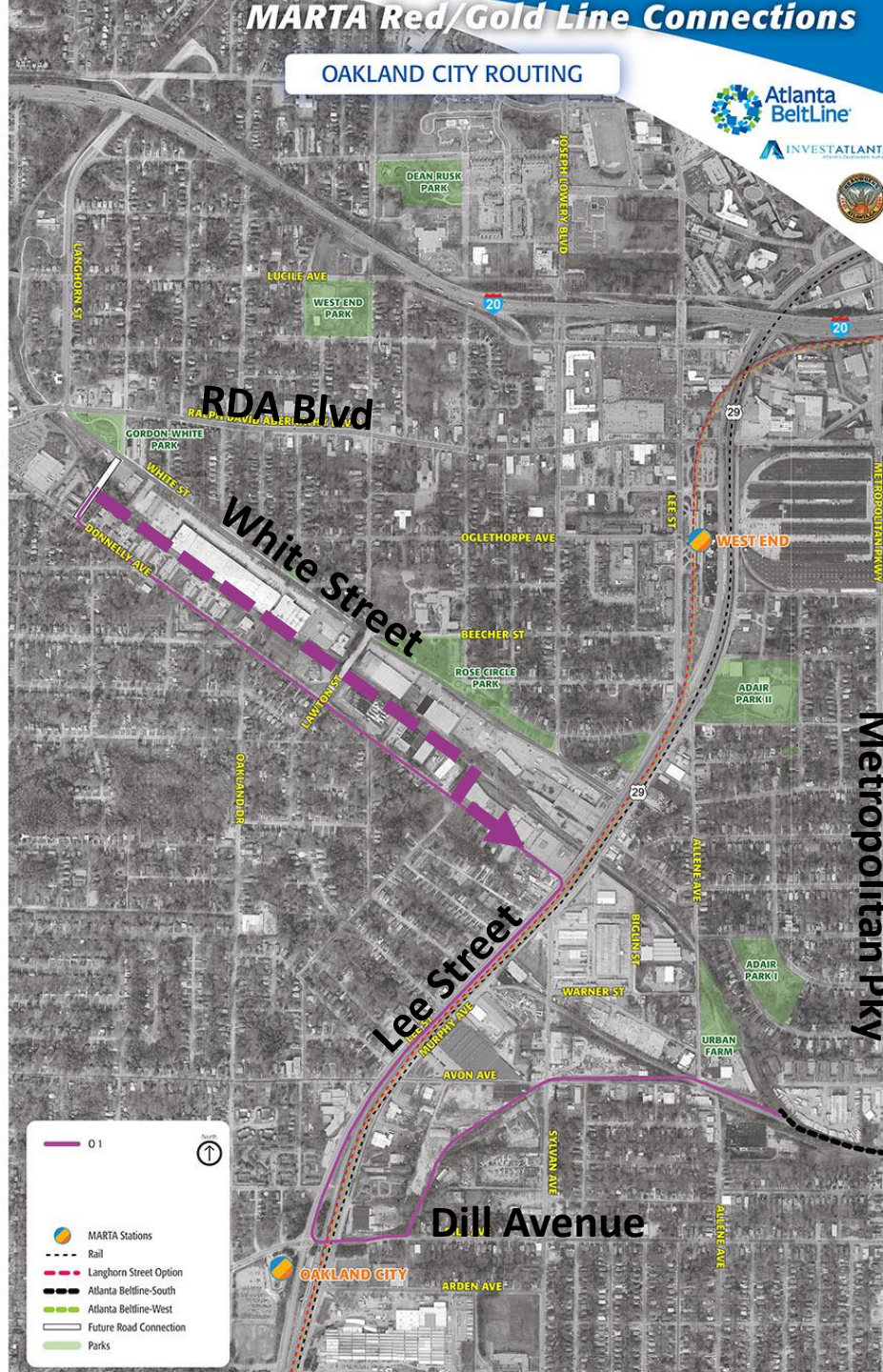


### West End Station Routings



# MARTA Red/Gold Line Connections

## OAKLAND CITY ROUTING





# MARTA Red/Gold Line Connections

## OAKLAND CITY ROUTING



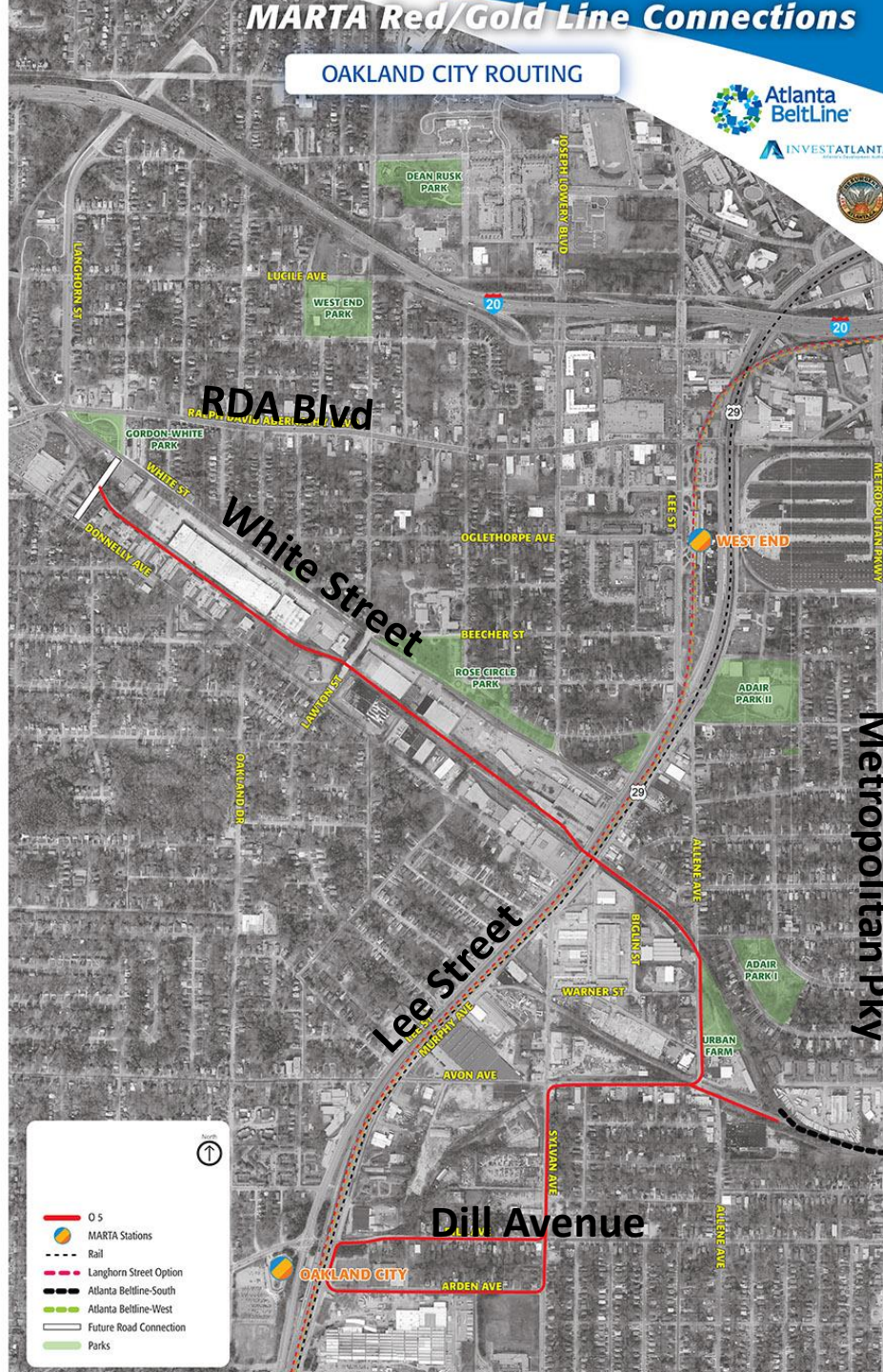


# MARTA Red/Gold Line Connections

## OAKLAND CITY ROUTING



INVESTATLANTA





# Community Engagement

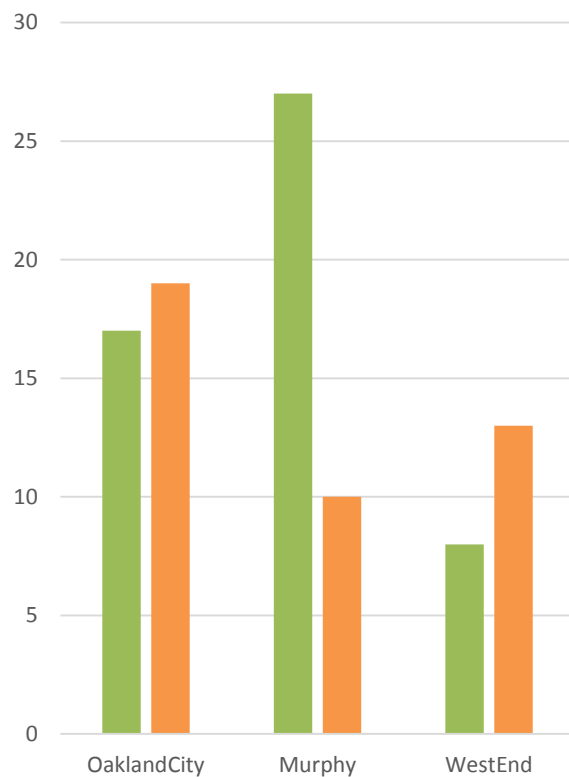
## Phase 1 Dot Exercise Results



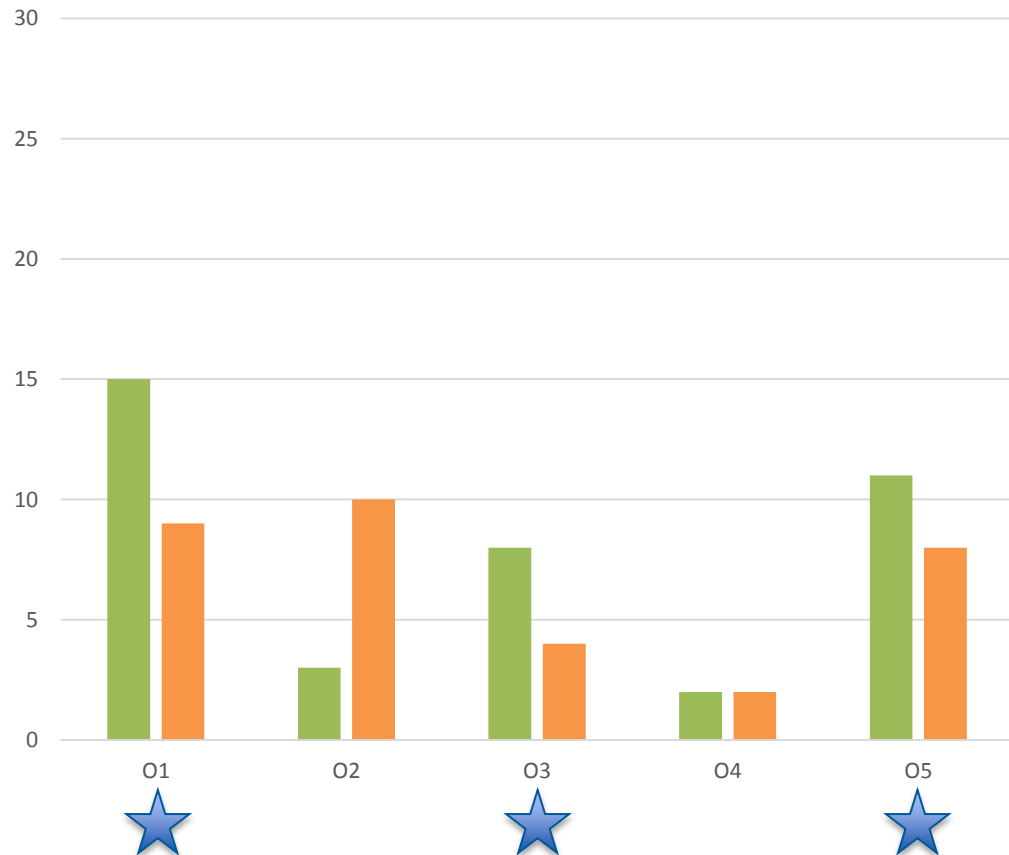
Atlanta  
BeltLine



### MARTA Red/Gold Station Preference



### Oakland City Station Routings



# MARTA Red/Gold Line Connections

## MURPHY IN-FILL ROUTING



INVEST ATLANTA



- MARTA Stations
- Rail
- Atlanta BeltLine-South
- Atlanta BeltLine-West
- Future Road Connection
- Parks



# Community Engagement

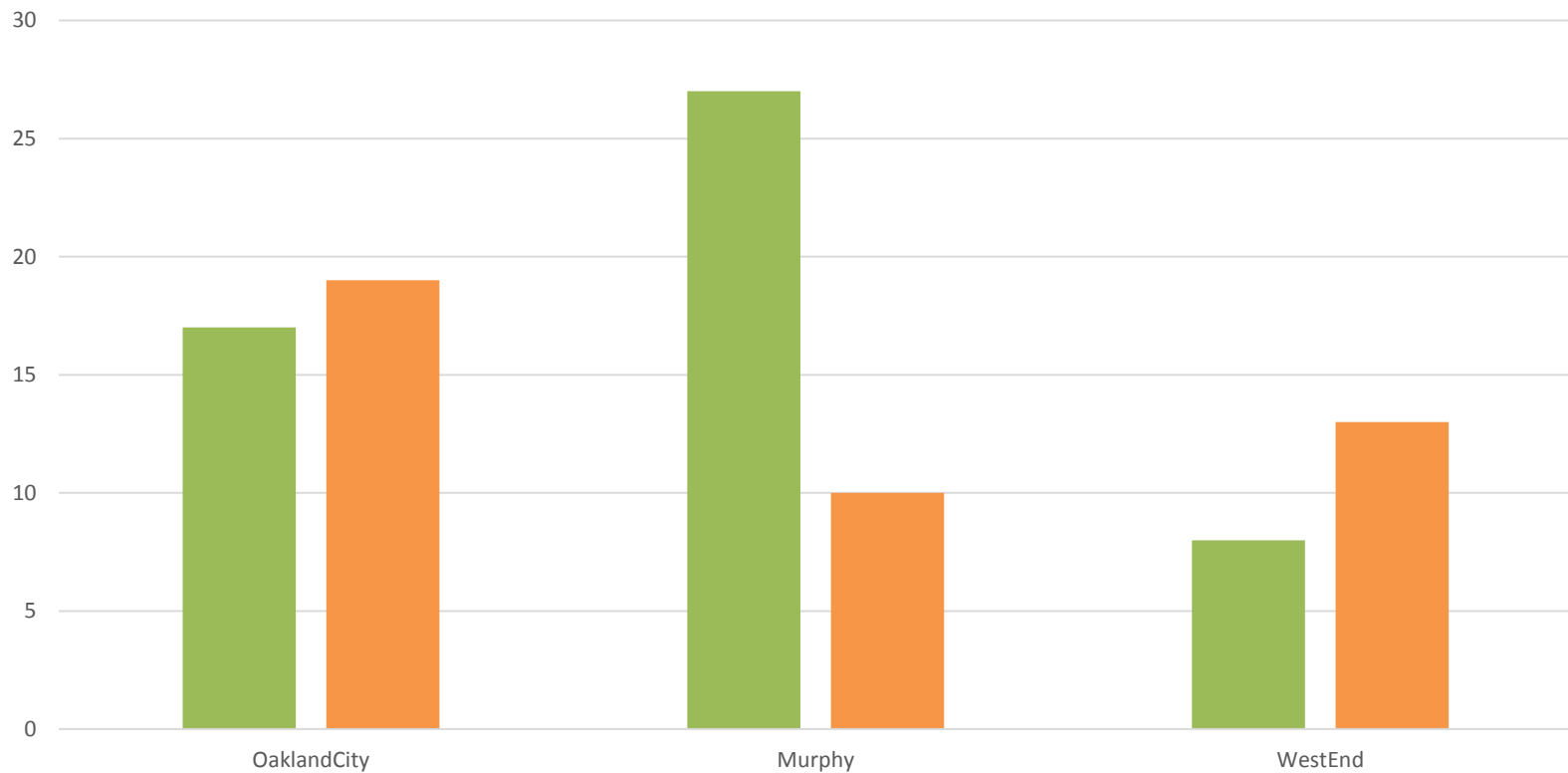
## Phase 1 Dot Exercise Results



Atlanta  
BeltLine



MARTA Red/Gold  
Station Preference



# Contact Information



Atlanta  
BeltLine



ATLANTA STREETCAR

## Jonathan Lewis, AICP

Interim Assistant Director of Planning -  
Transportation  
City of Atlanta, Department of Planning  
[JLewis@atlantaga.gov](mailto:JLewis@atlantaga.gov)

## Shaun Green, PE

Senior Transit Engineer  
Atlanta BeltLine, Inc.  
[sgreen@atlbeltline.org](mailto:sgreen@atlbeltline.org)

## Nathan Soldat

Community Engagement Advocate  
Atlanta BeltLine, Inc.  
[nsoldat@atlbeltline.org](mailto:nsoldat@atlbeltline.org)

Document confirmed transit  
routes and environmental  
resources



Continue to engage  
communities and coordinate  
with resource agencies



Proceed with technical work  
based on documented  
transit routes