

Transit Routing Options and MARTA Connectivity Assessments

Atlanta BeltLine West

Westside Study Group: September 22, 2014

Southwest Study Group: September 25, 2014



- **Project Team Introductions**
- **Today's Agenda:**
 - Schedule
 - Project Background
 - Environmental Review Process
 - Screening Process
 - Preference Exercise
- **Adjourn**

Community Engagement Schedule

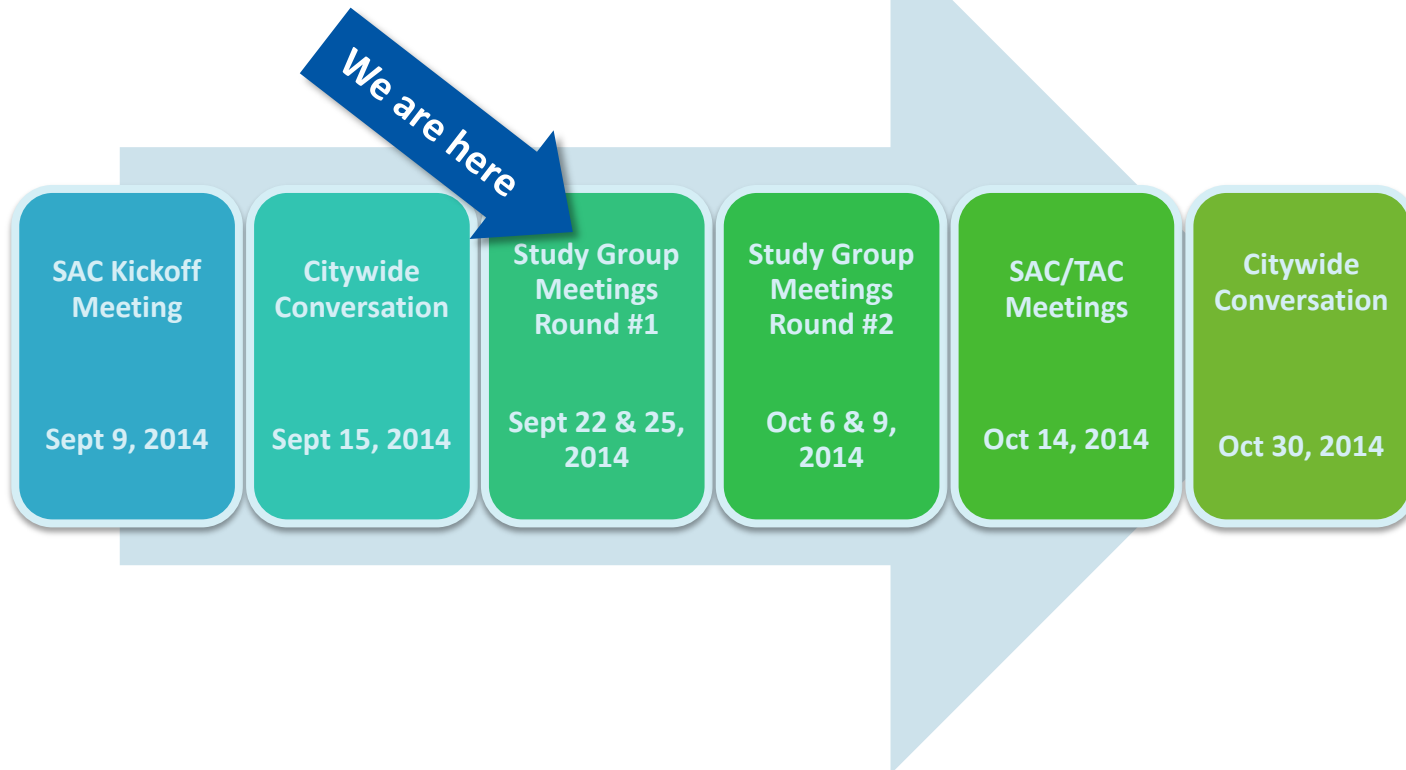
Summer and Fall 2014



Atlanta
BeltLine



ATLANTA STREETCAR



Stakeholder Advisory Committee (SAC): Advisory committee for each project corridor representing business and property owners, adjacent neighborhoods, and community groups.

Technical Advisory Committee (TAC): Advisory committee comprised of representatives with technical and/or environmental expertise.

Study Groups: Residents and business owners with an interest in the project within each geographical area.

Citywide Conversations: Citywide public meetings are forums to educate the public at large with upcoming plans, policies, and studies.

Milestone Schedule



Atlanta
BeltLine



ATLANTA STREETCAR

We are here

Transit Routing
Options/MARTA
Connectivity
Assessments

June 2014 to
November 2014

Technical Studies
and Evaluation

September 2014
to March 2015

Complete Draft
Environmental
Assessment (EA)

March 2015

Public/Agency
Review and
Public Hearing

April 2015

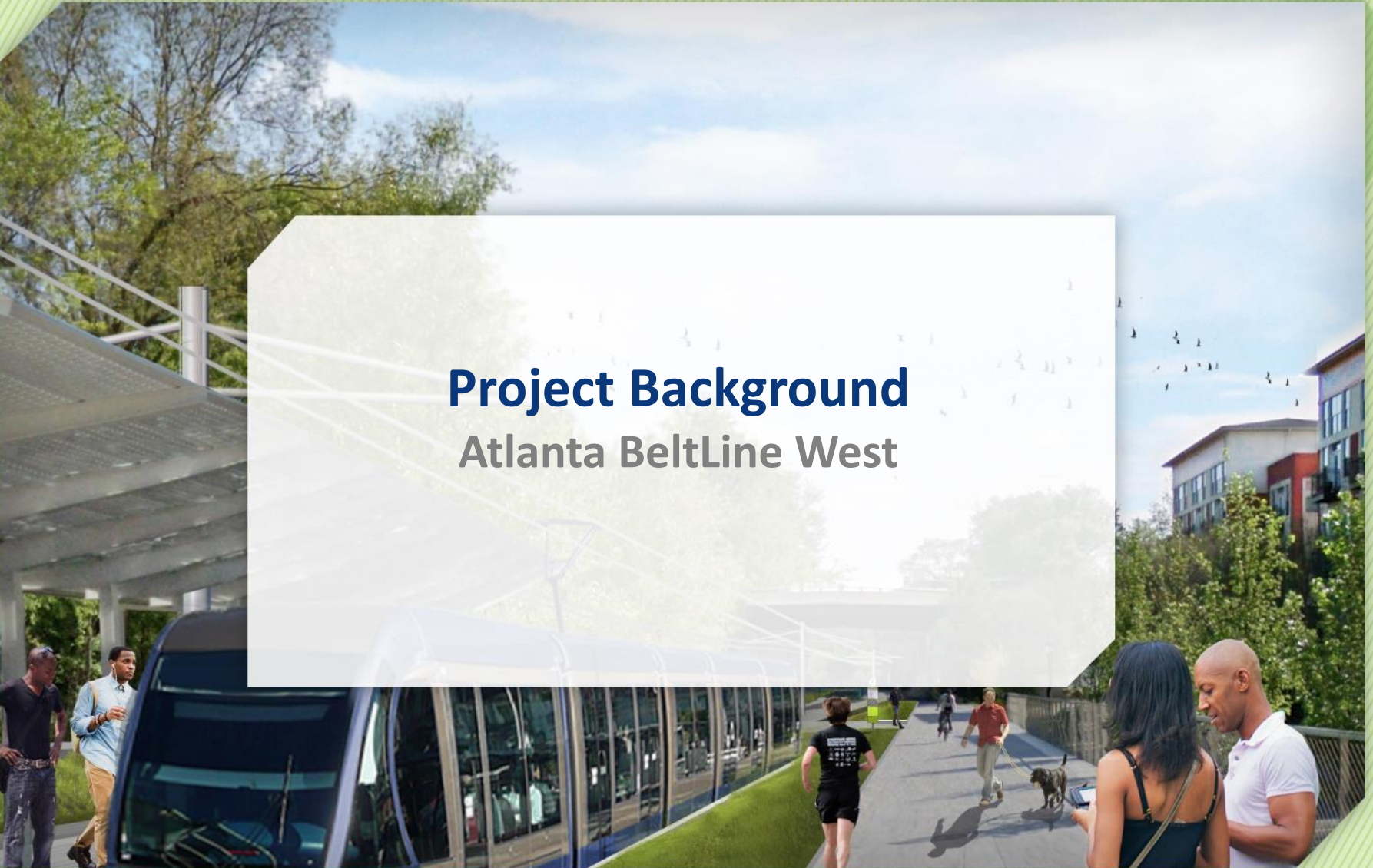
Finding of No
Significant
Impact (FONSI)

May 2015

Project
Development
(PD) Entry
Request

Summer 2015

Project Background Atlanta BeltLine West





Connect Atlanta Plan

November 2008

Draft Atlanta BeltLine/Atlanta Streetcar System Plan (SSP)

March 2014

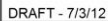
**Atlanta Streetcar Finding of No
Significant Impact (FONSI)**

April 2011

**Record of Decision (ROD) for Tier 1
EIS**

August 2012

Atlanta BeltLine/Atlanta Streetcar System Plan



Integrates Atlanta Streetcar lines and Atlanta BeltLine into a unified system



Streetcar is the transit technology for the Atlanta BeltLine corridor

Comprehensive system network

Complements existing and future MARTA bus and rail services



Environmental Review Process

Atlanta BeltLine West

Environmental Review Process

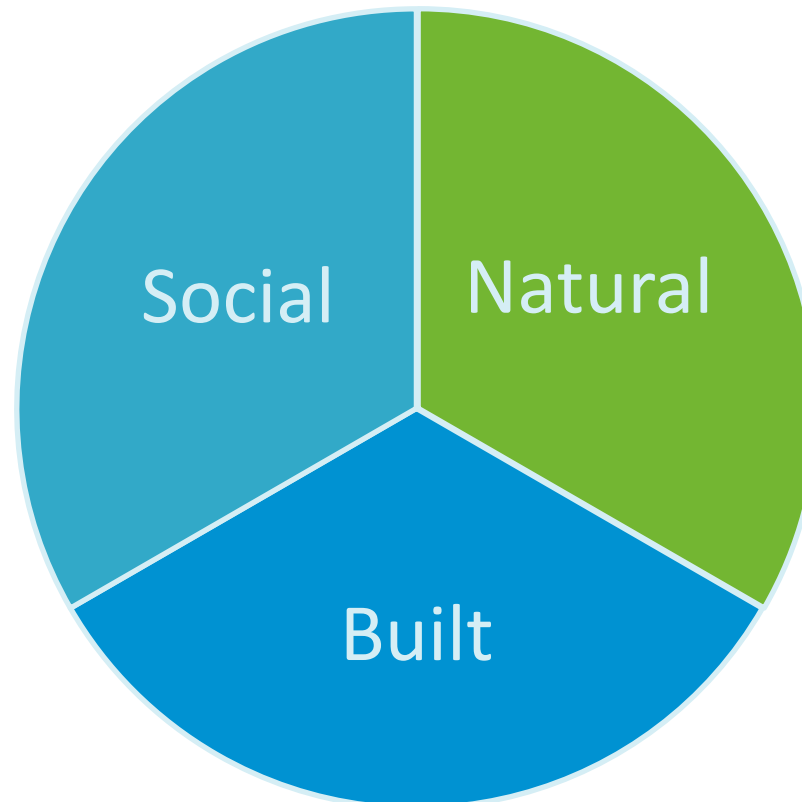
What is it?



Atlanta
BeltLine



- National Environmental Policy Act (NEPA) of 1969
- All federal projects must consider impacts to the environment



Environmental Review Process

What are the steps?



Atlanta
BeltLine



ATLANTA STREETCAR

Review Previous Planning Work

**Routing Selection / MARTA
Connectivity**

Technical Studies and Detailed
Evaluation

Complete Documentation

Finding of No Significant Impact
(FONSI)

Environmental Review Process

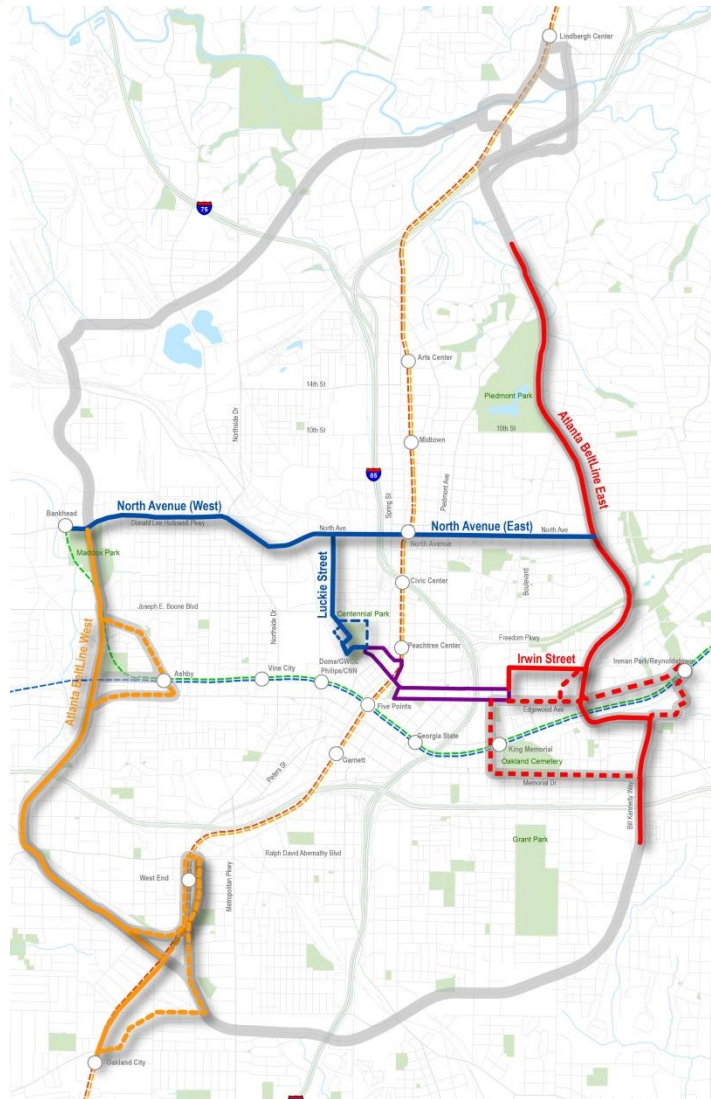
Which corridors are involved?



Atlanta
BeltLine



ATLANTA STREETCAR



Atlanta BeltLine East



-Alignment Options



Midtown/Crosstown Corridor



-Alignment Options



Atlanta BeltLine West



-Alignment Options



Atlanta Streetcar*



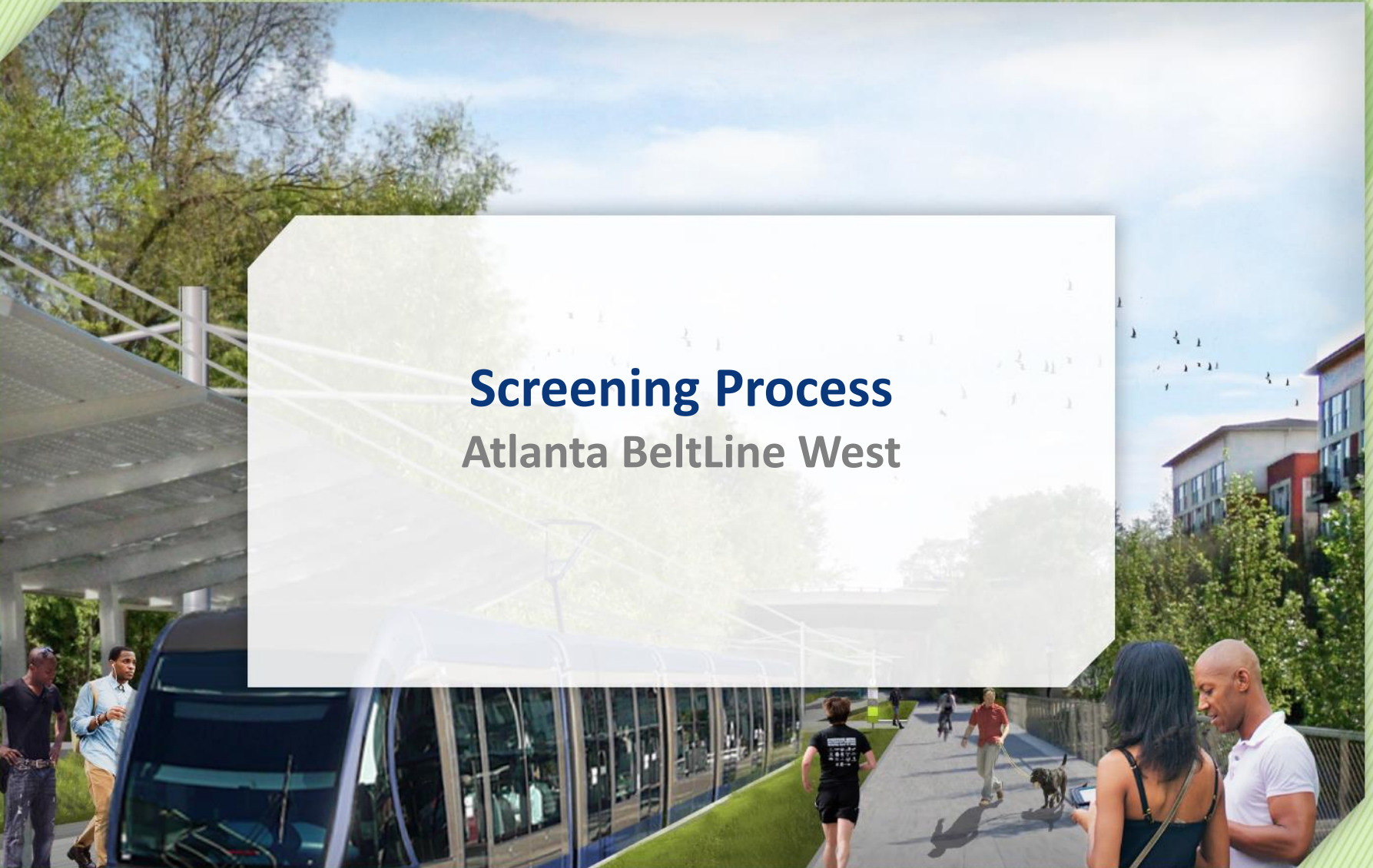
MARTA Red/Gold Line*



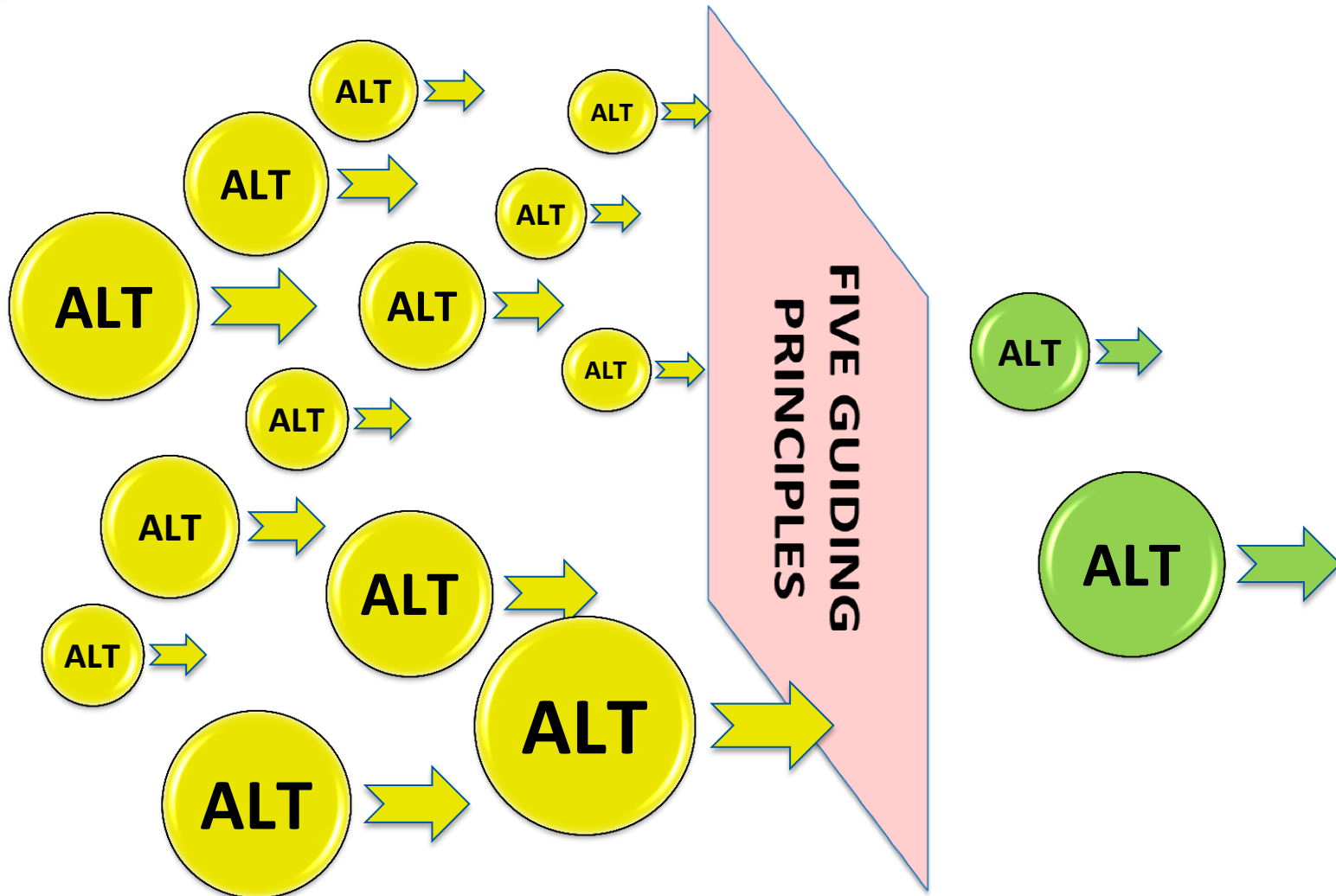
MARTA Blue/Green Line*

* Shown for Reference

Screening Process Atlanta BeltLine West



- **Five Guiding Principles**
 - Project Readiness
 - Practicality / Ridership
 - Equity
 - Financial Options
 - Development Impact
- **Shaped from community input during previous transit planning efforts**



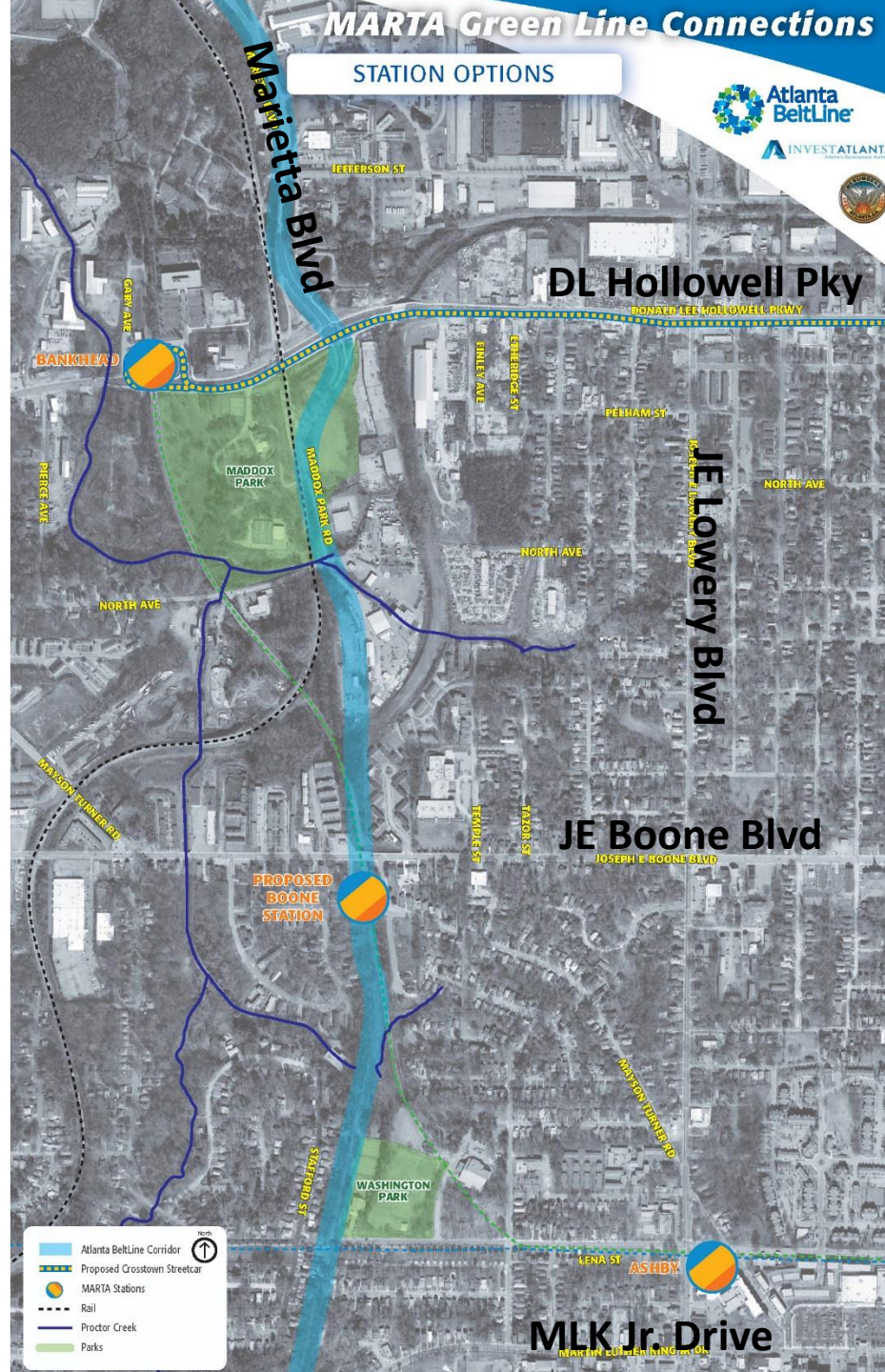
Transit Routing Options Atlanta BeltLine West

MARTA Green Line Connections

STATION OPTIONS



INVESTATLANTA



BANKHEAD ROUTING

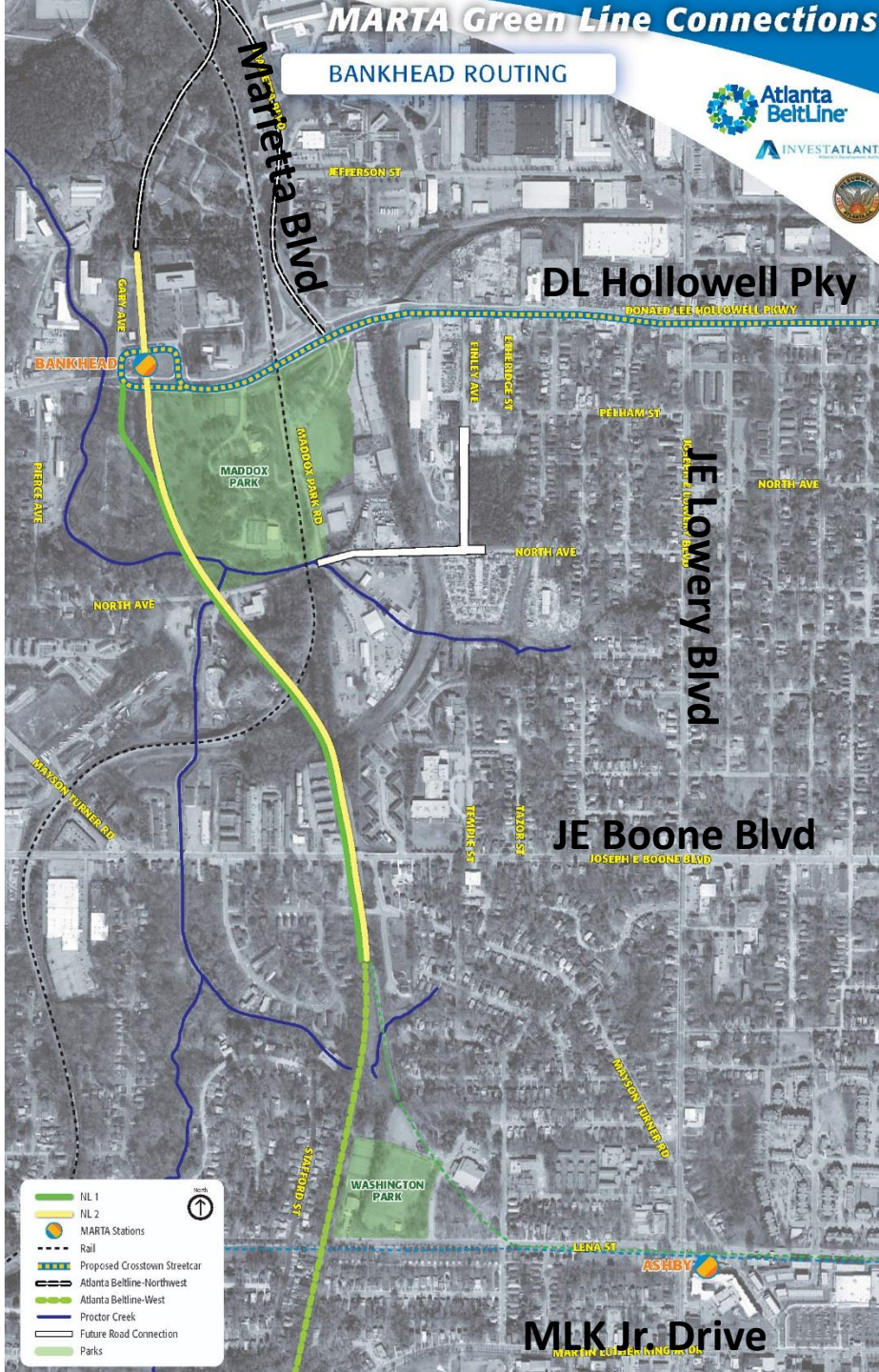


DL Hollowell Pky

JE Lowery Blvd

JE Boone Blvd

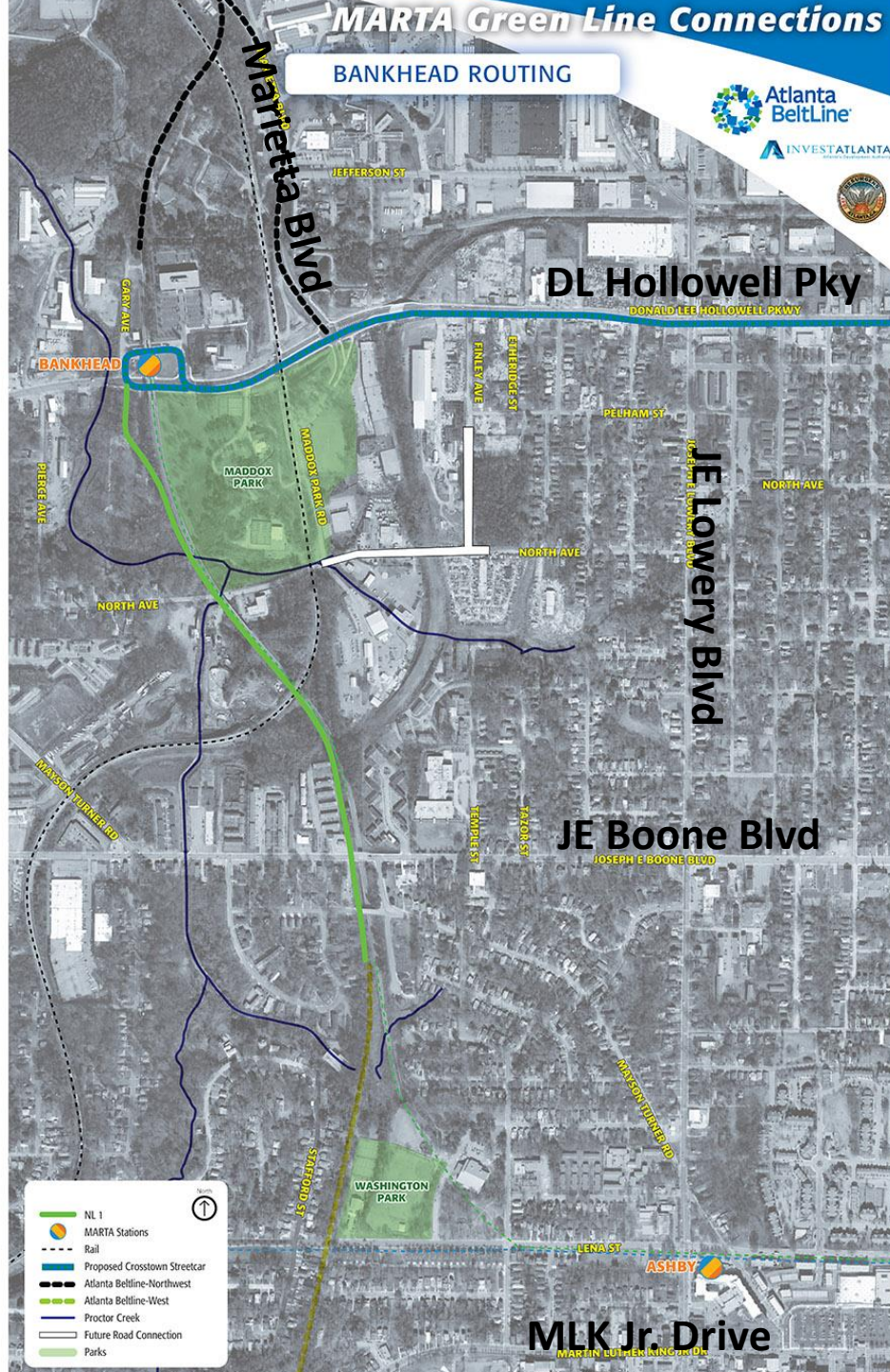
MLK Jr. Drive



BANKHEAD ROUTING



INVESTATLANTA



- NL 1
- MARTA Stations
- Rail
- Proposed Crosstown Streetcar
- Atlanta BeltLine-Northwest
- Atlanta BeltLine-West
- Proctor Creek
- Future Road Connection
- Parks



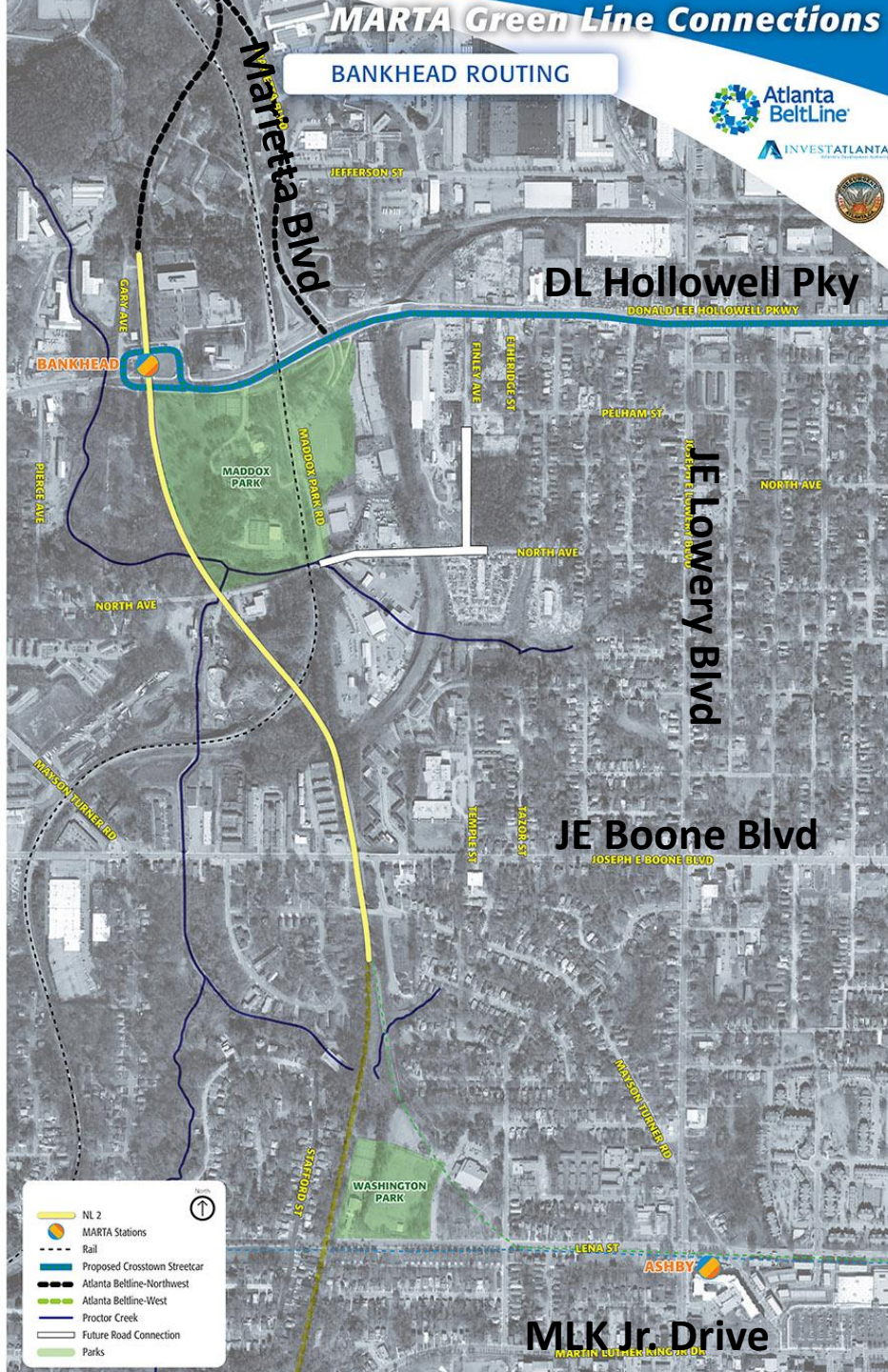
MLK Jr. Drive
MARTIN LUTHER KING JR. DR.

MARTA Green Line Connections

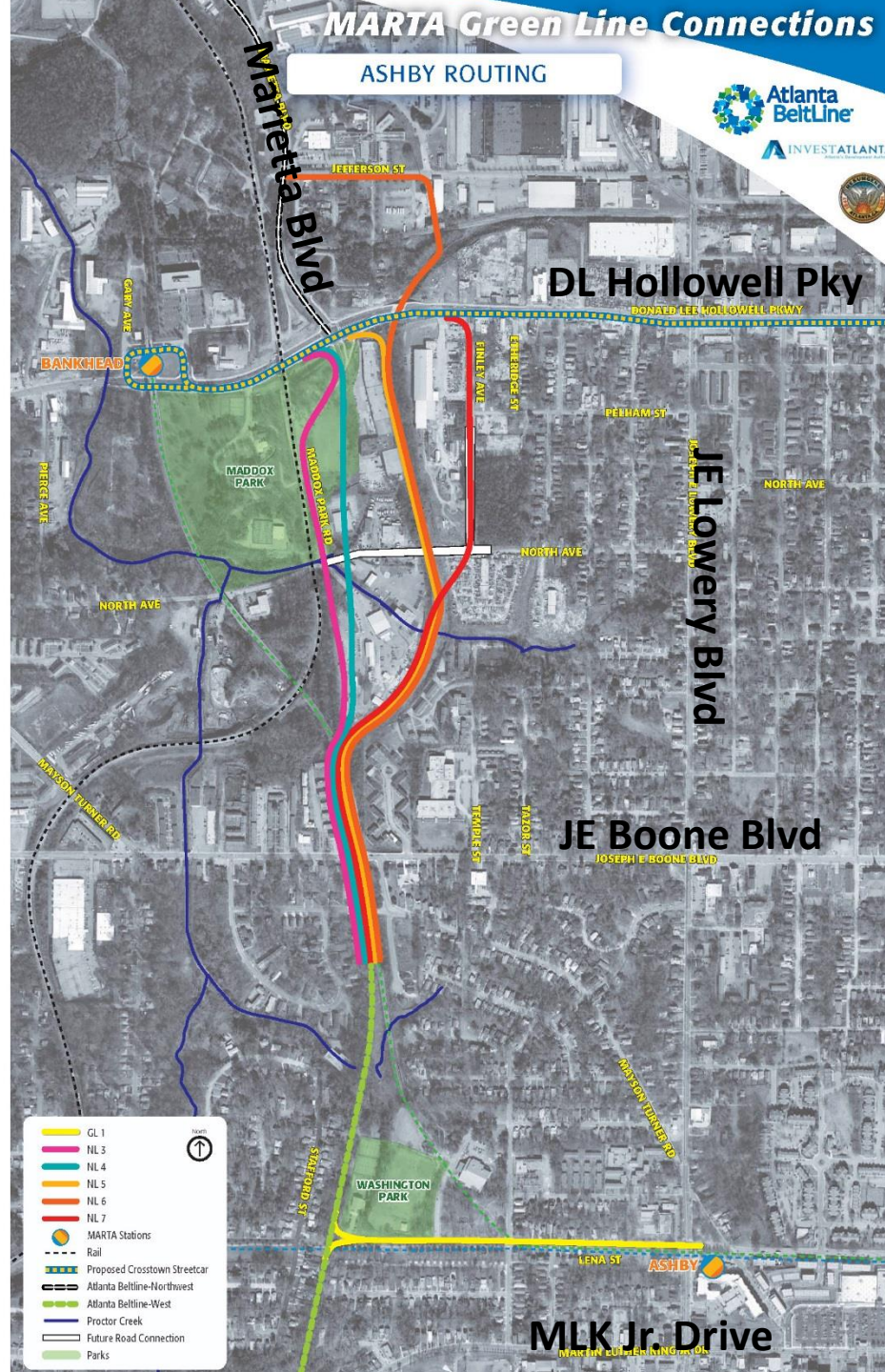
BANKHEAD ROUTING



INVESTATLANTA



ASHBY ROUTING



ASHBY ROUTING

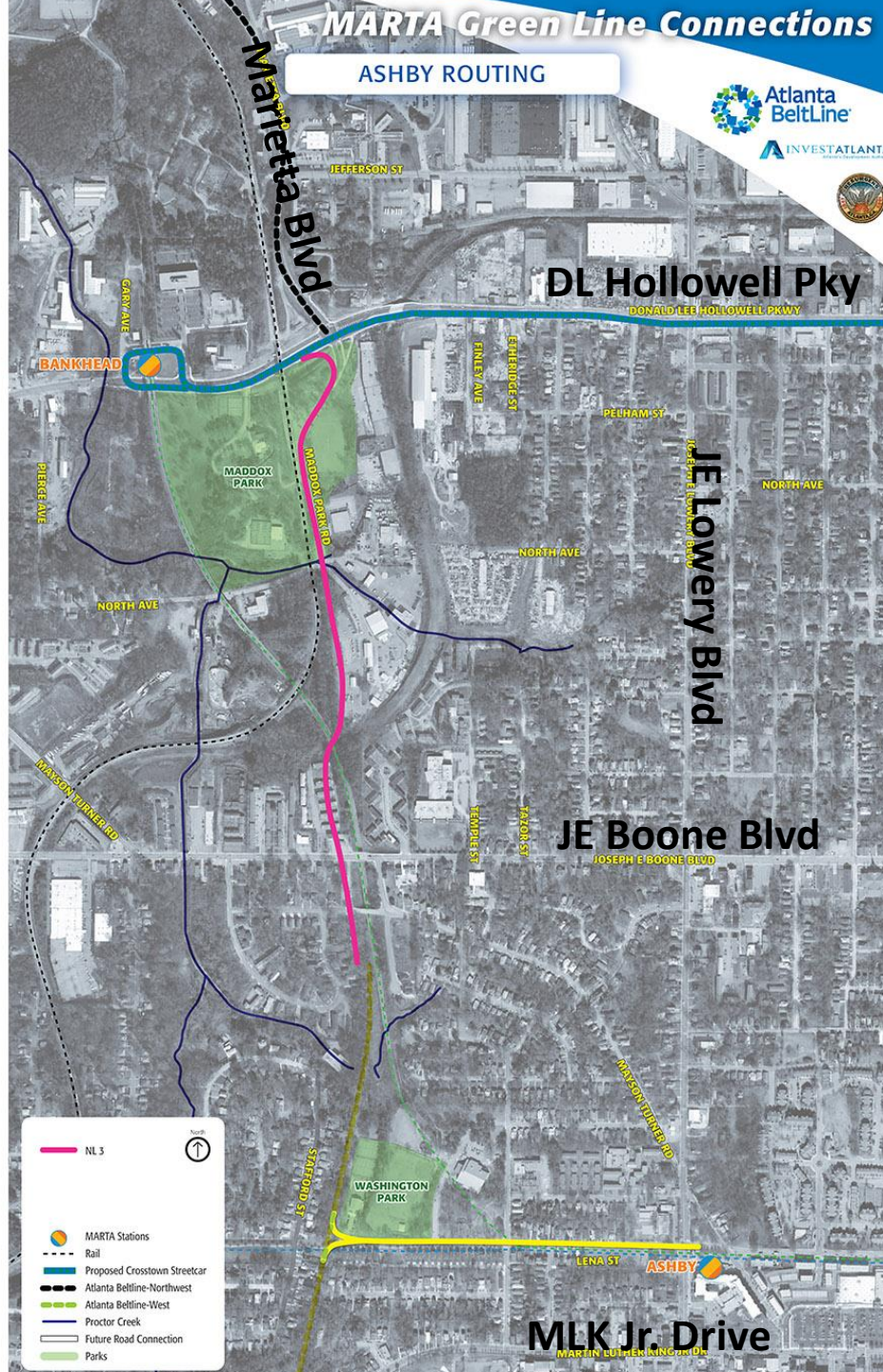


DL Hollowell Pky

JE Lowery Blvd
Gordon & Lowery Blvd

JE Boone Blvd

MLK Jr. Drive

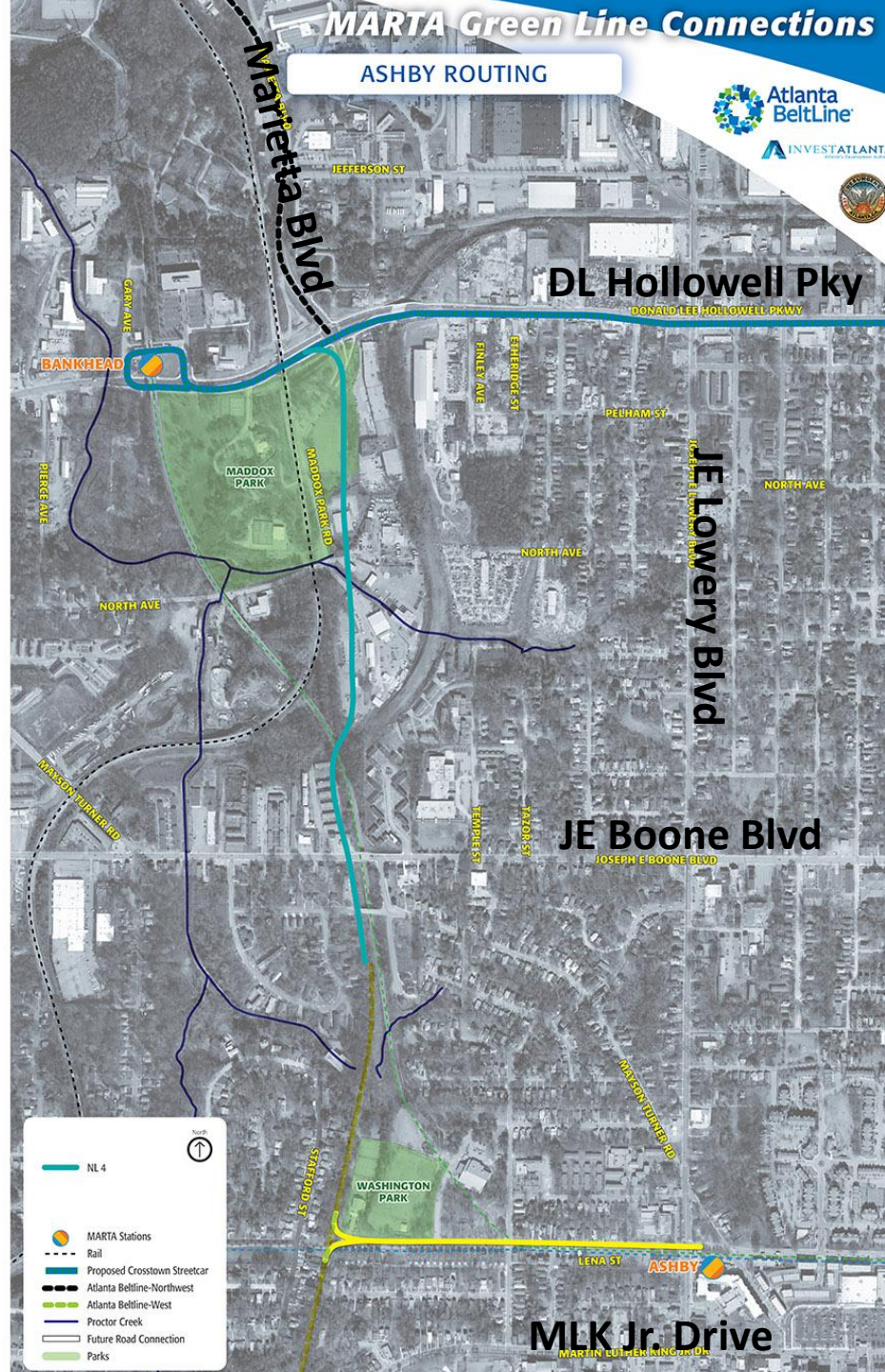


MARTA Green Line Connections

ASHBY ROUTING



INVESTATLANTA

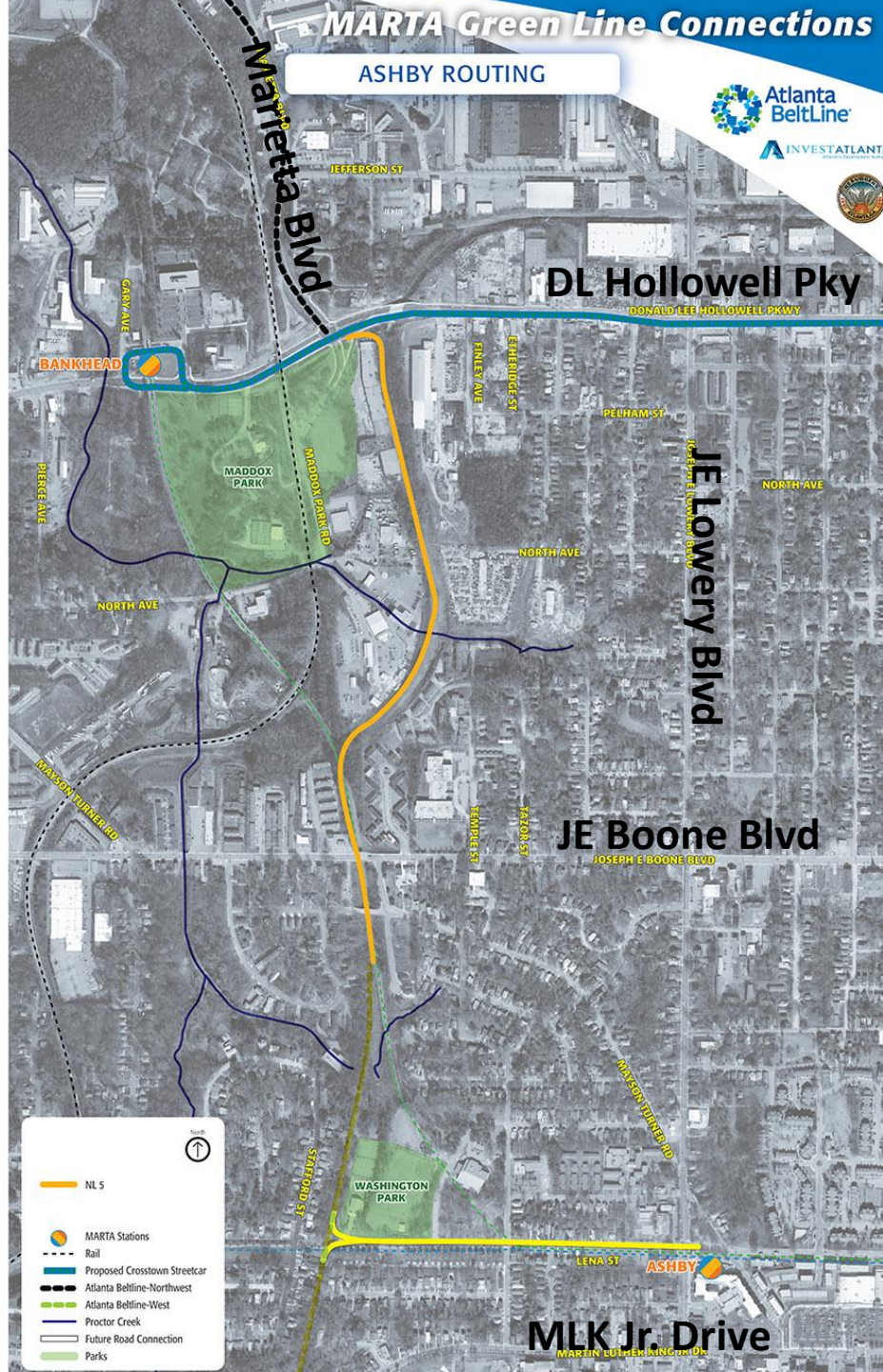


MARTA Green Line Connections

ASHBY ROUTING



INVESTATLANTA

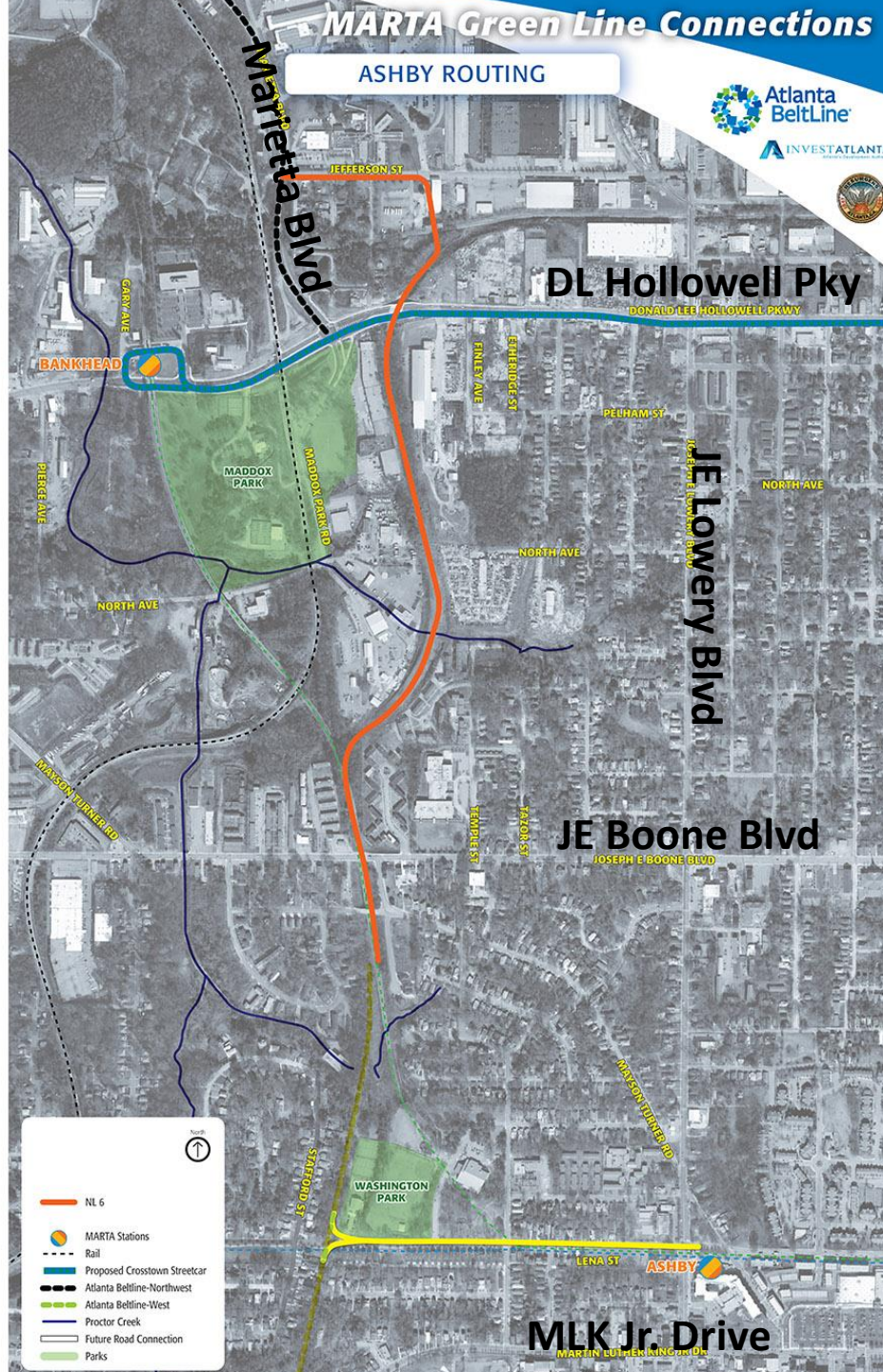


MARTA Green Line Connections

ASHBY ROUTING



INVEST ATLANTA



ASHBY ROUTING



DL Hollowell Pky

JE Lowery Blvd
 10000 JE Lowery Blvd

JE Boone Blvd

MLK Jr. Drive

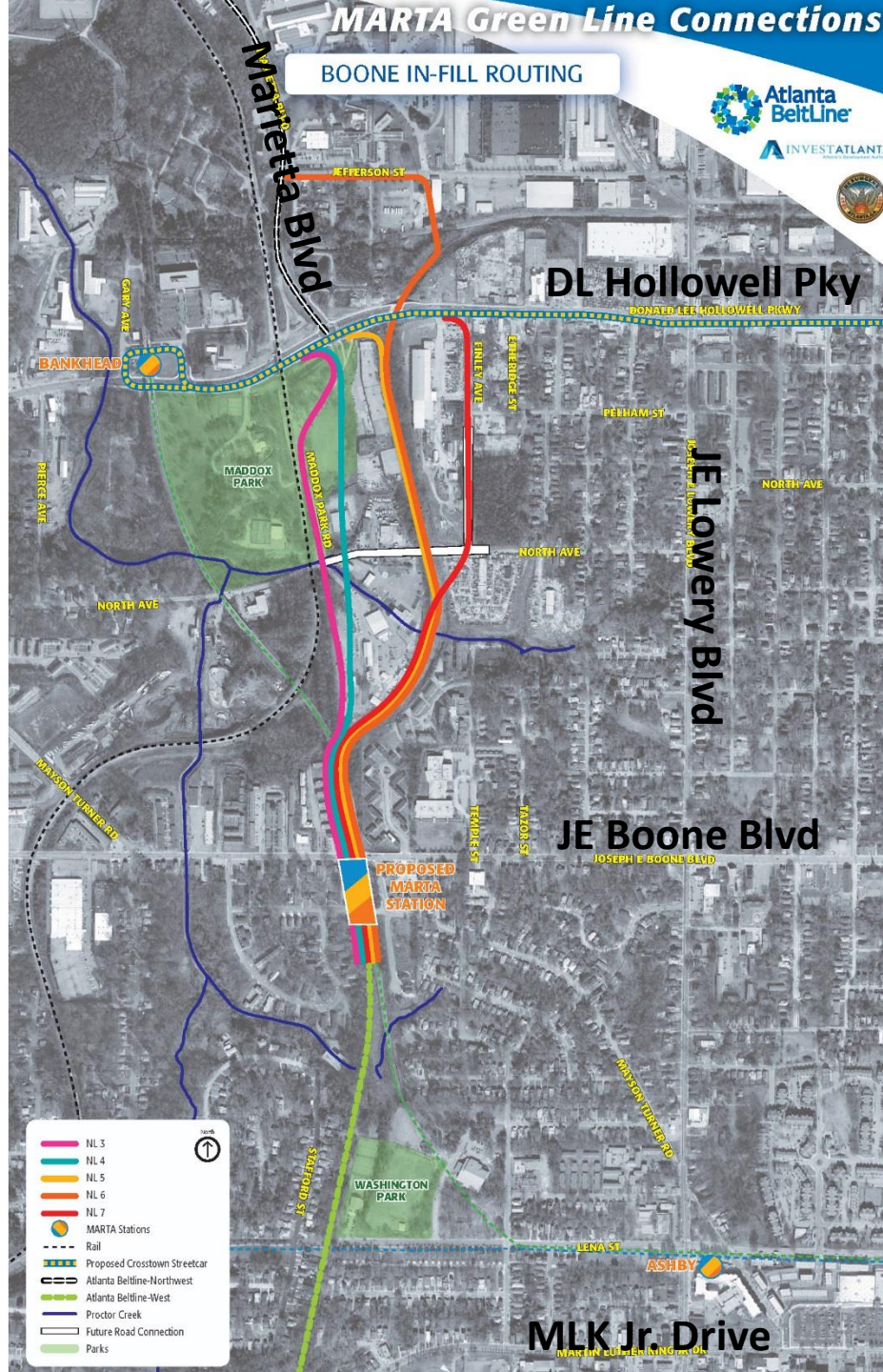


MARTA Green Line Connections

BOONE IN-FILL ROUTING



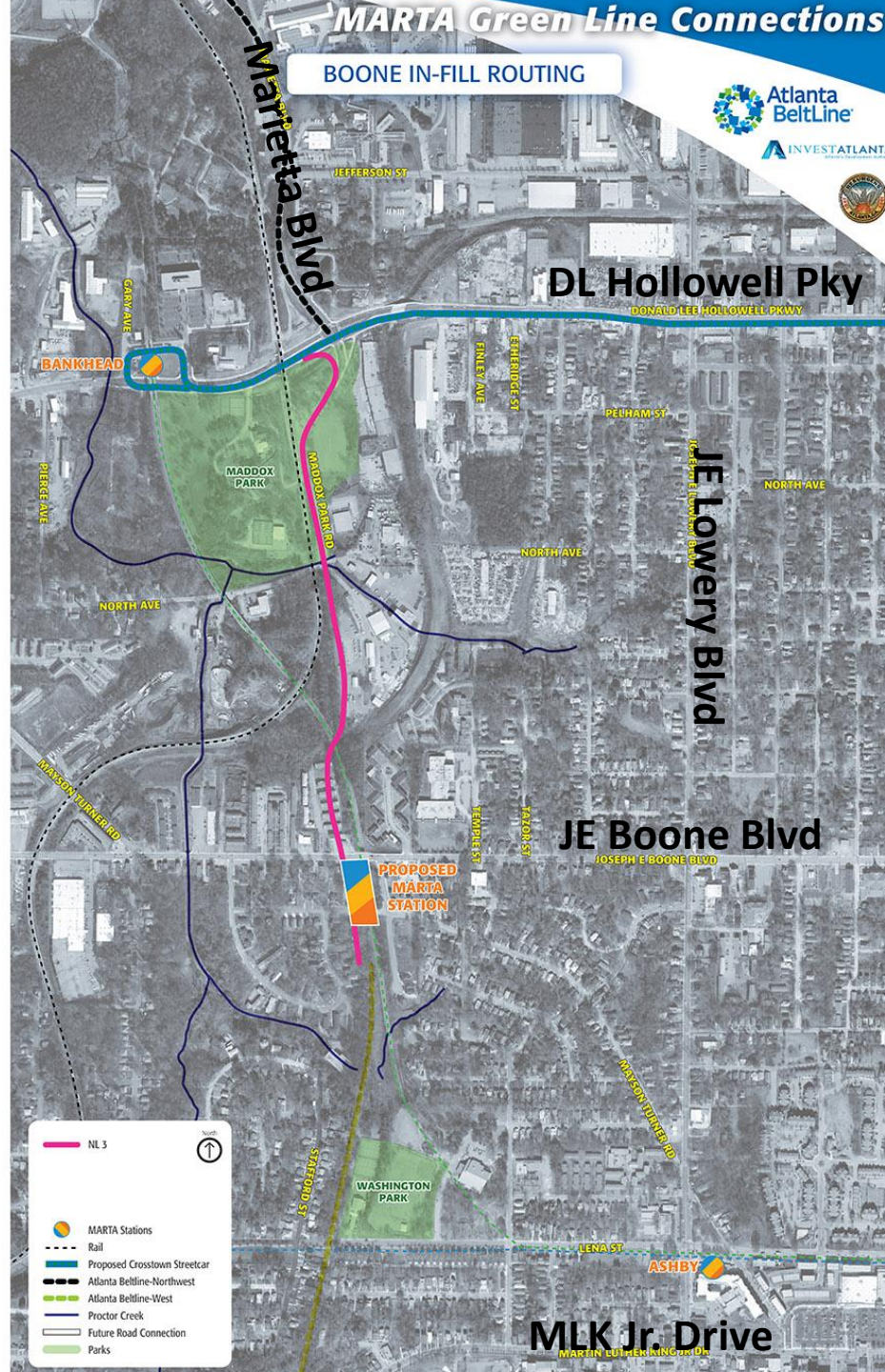
INVEST ATLANTA



BOONE IN-FILL ROUTING



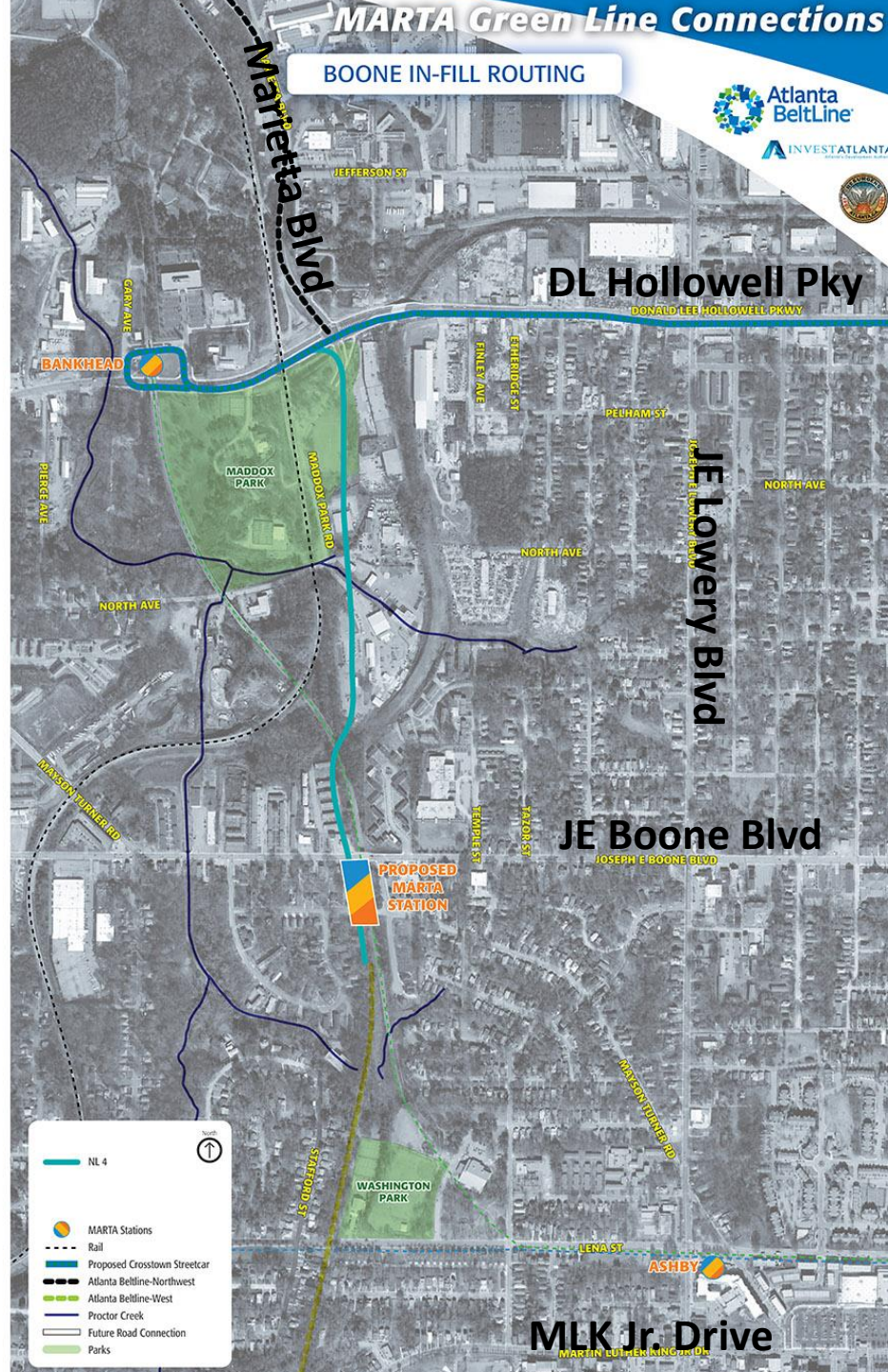
INVEST ATLANTA



BOONE IN-FILL ROUTING



INVEST ATLANTA

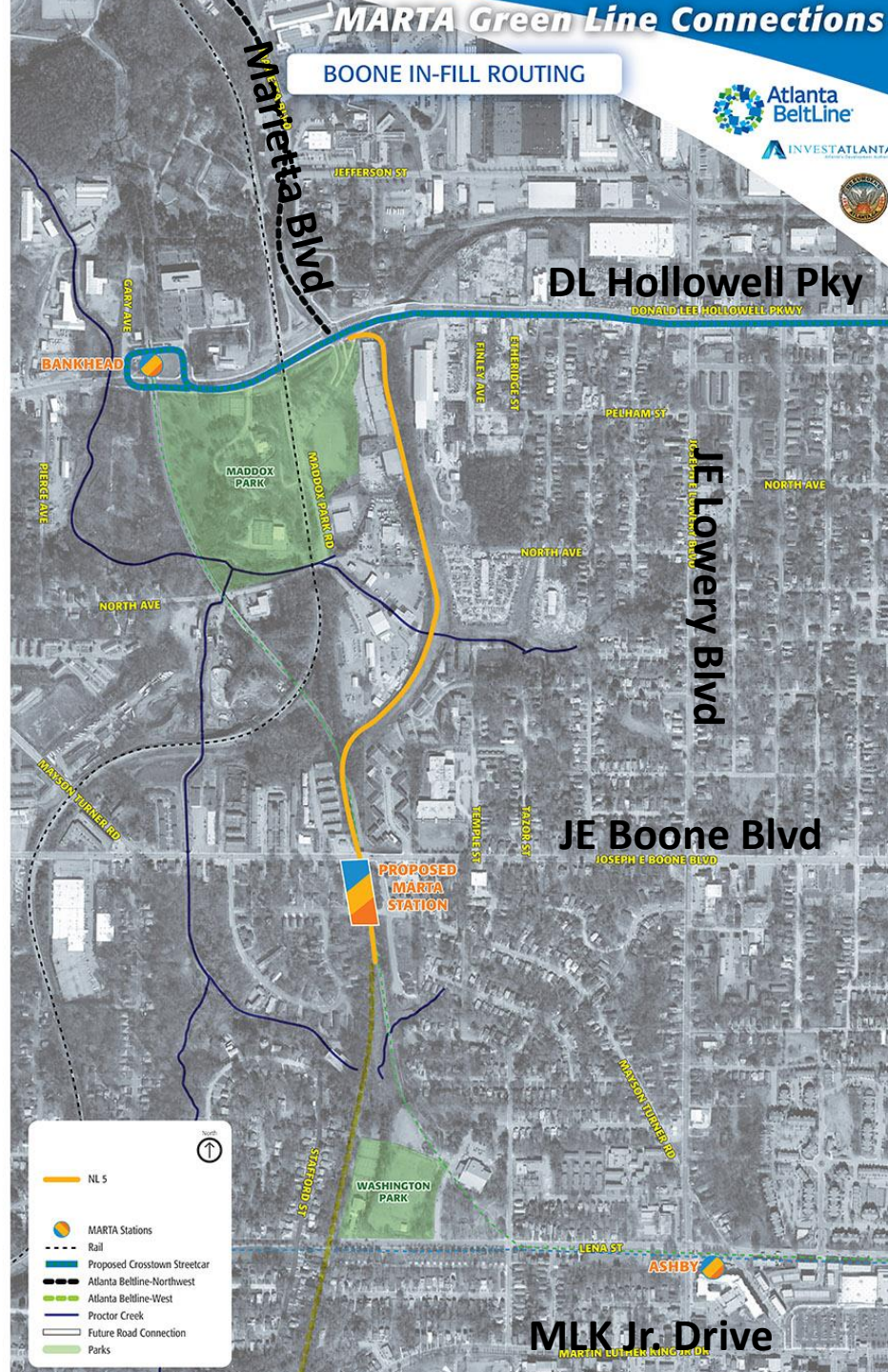


MARTA Green Line Connections

BOONE IN-FILL ROUTING



INVEST ATLANTA

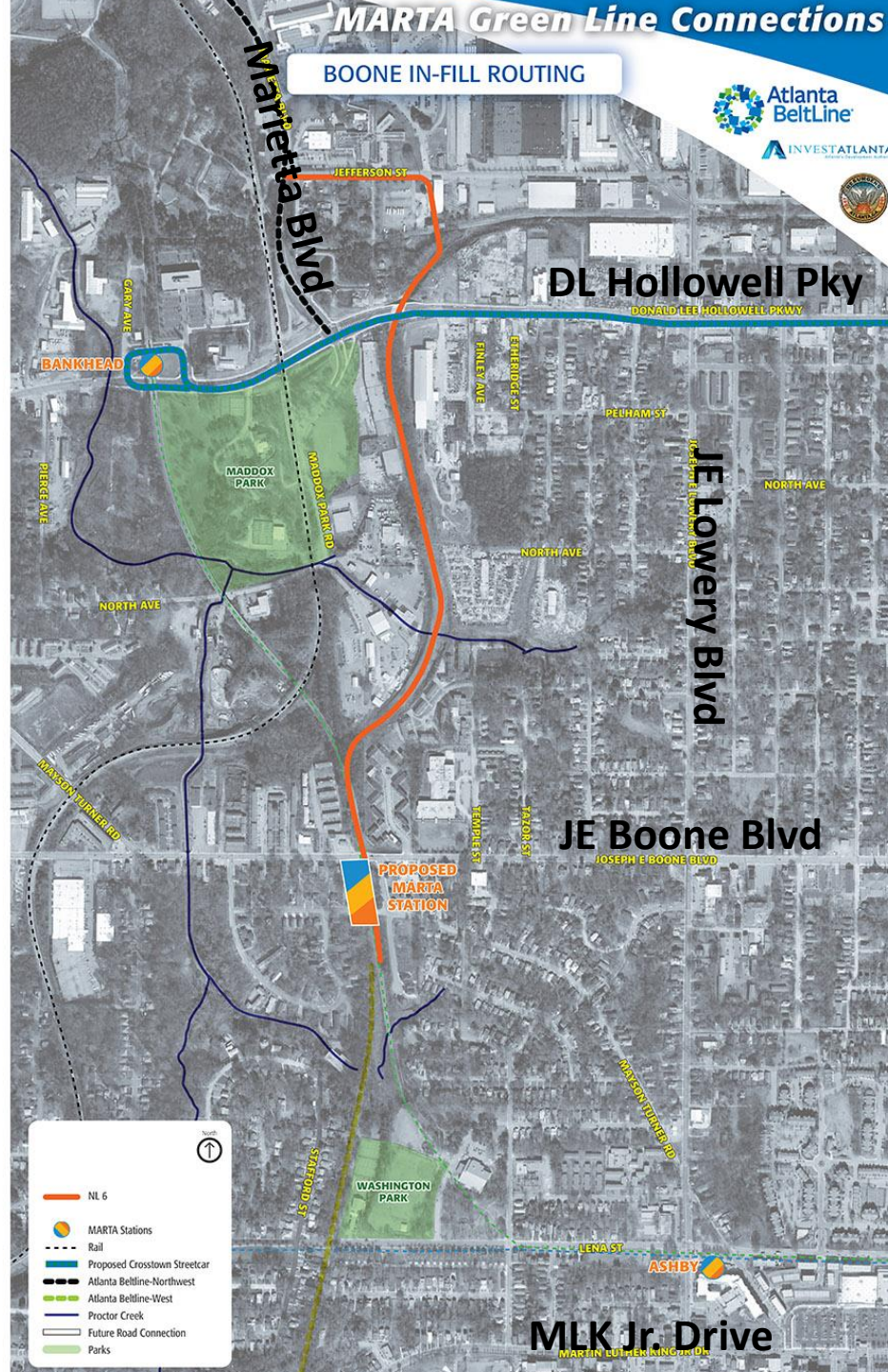


MARTA Green Line Connections

BOONE IN-FILL ROUTING



INVESTATLANTA



 NL 6

 MARTA Stations

 Rail

 Proposed Crosstown Streetcar

 Atlanta BeltLine-Northwest

 Atlanta BeltLine-West

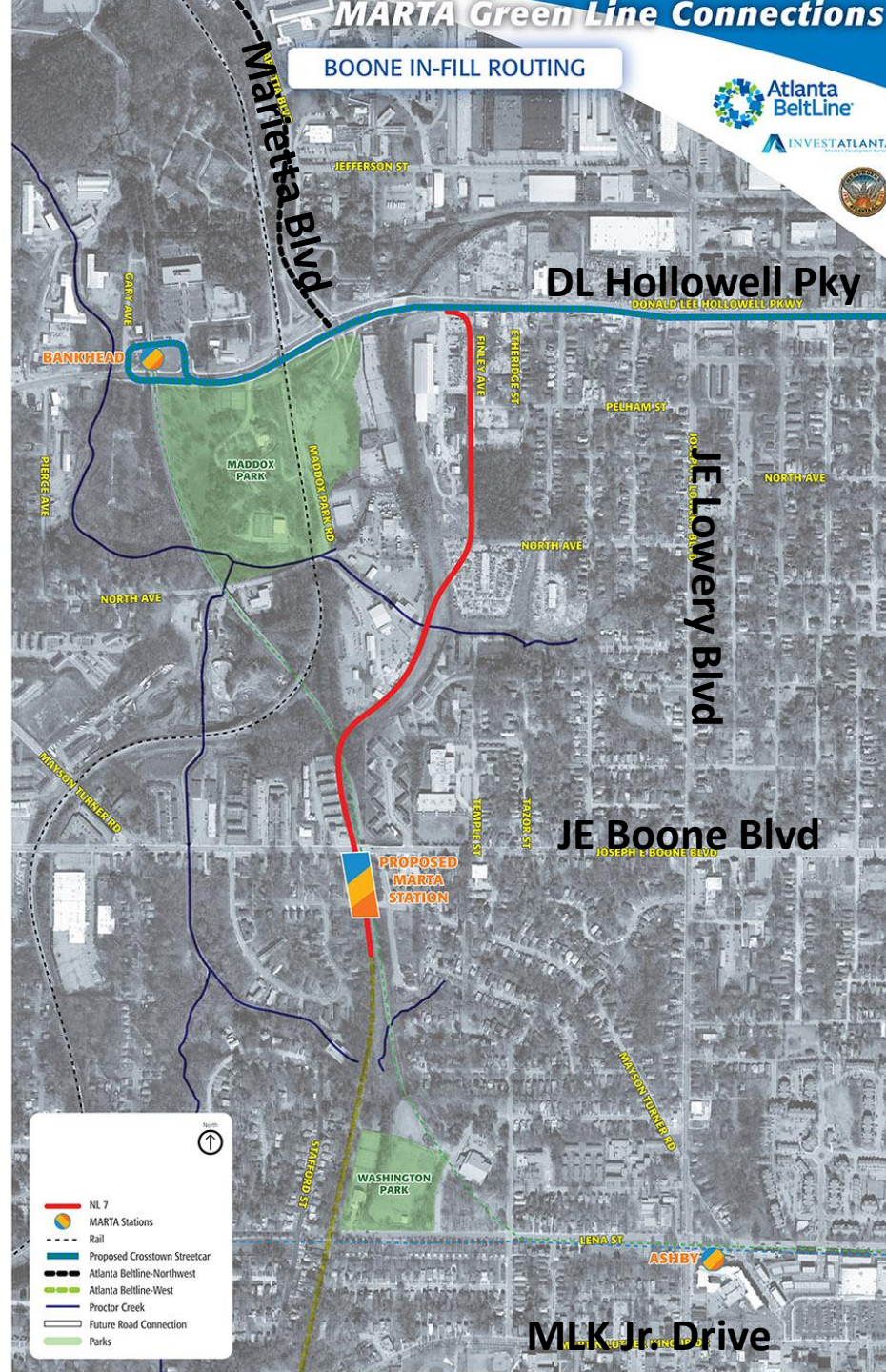
 Proctor Creek

 Future Road Connection

 Parks

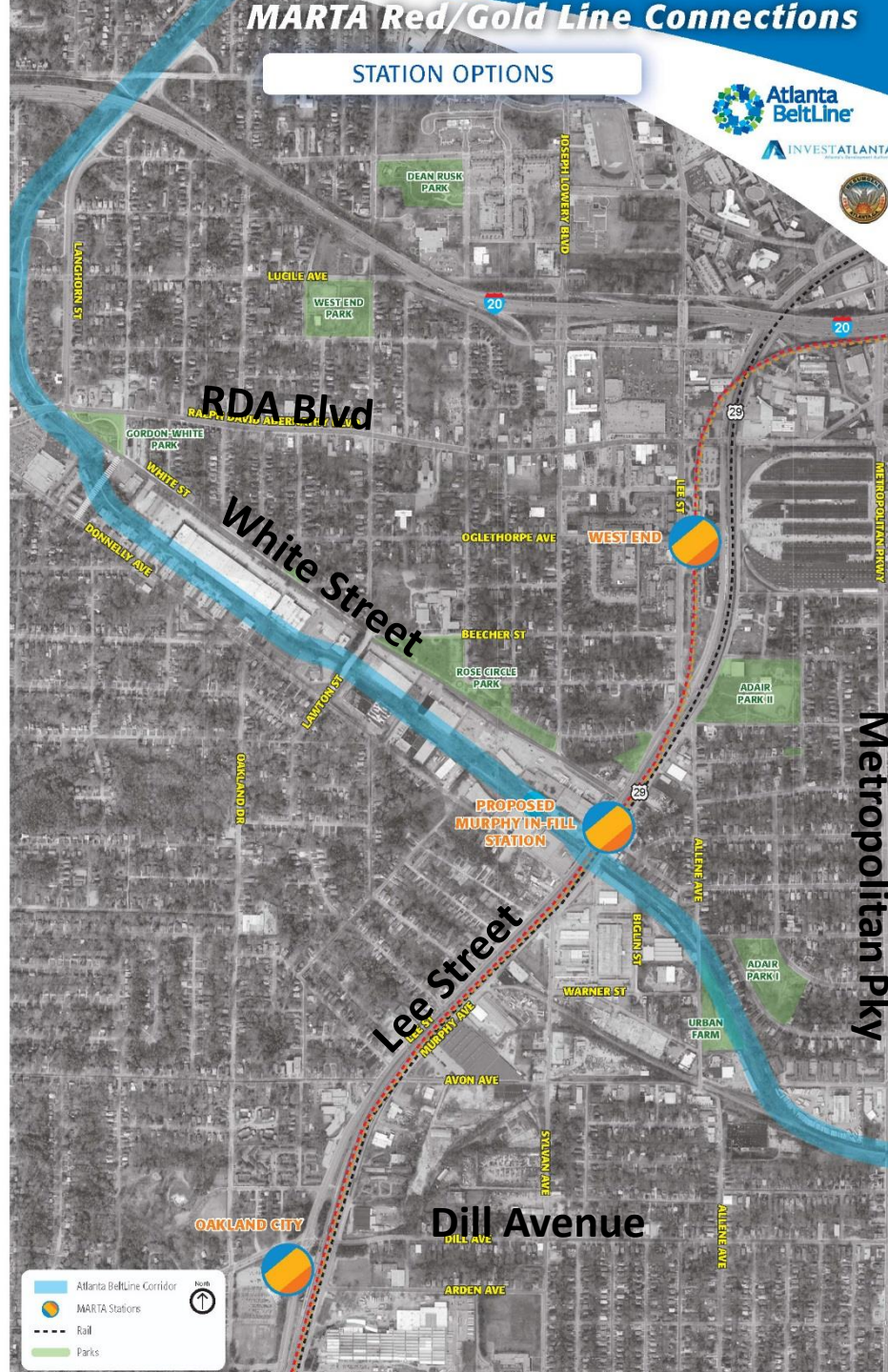


MLK Jr. Drive



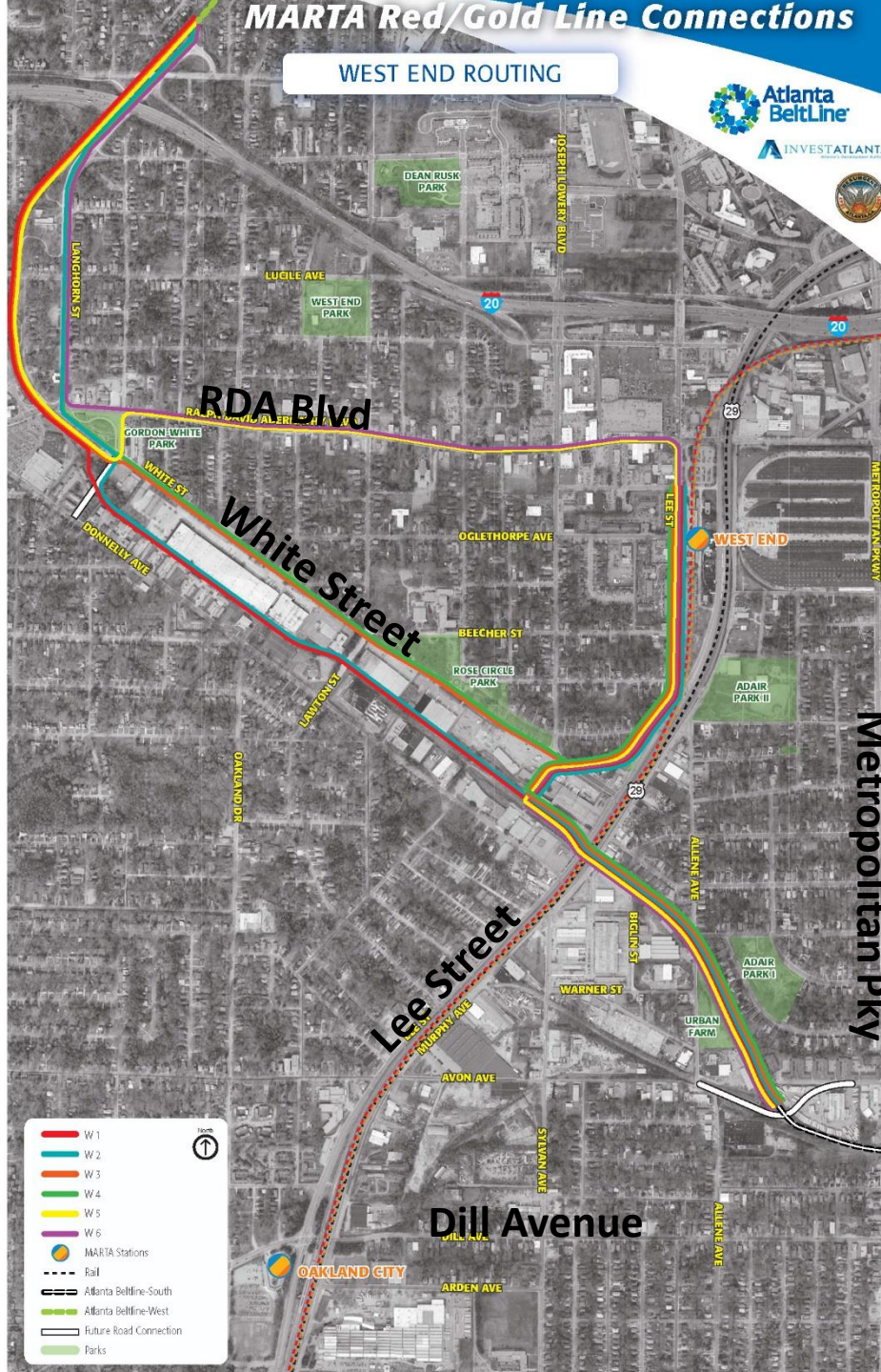
MARTA Red/Gold Line Connections

STATION OPTIONS



MARTA Red/Gold Line Connections

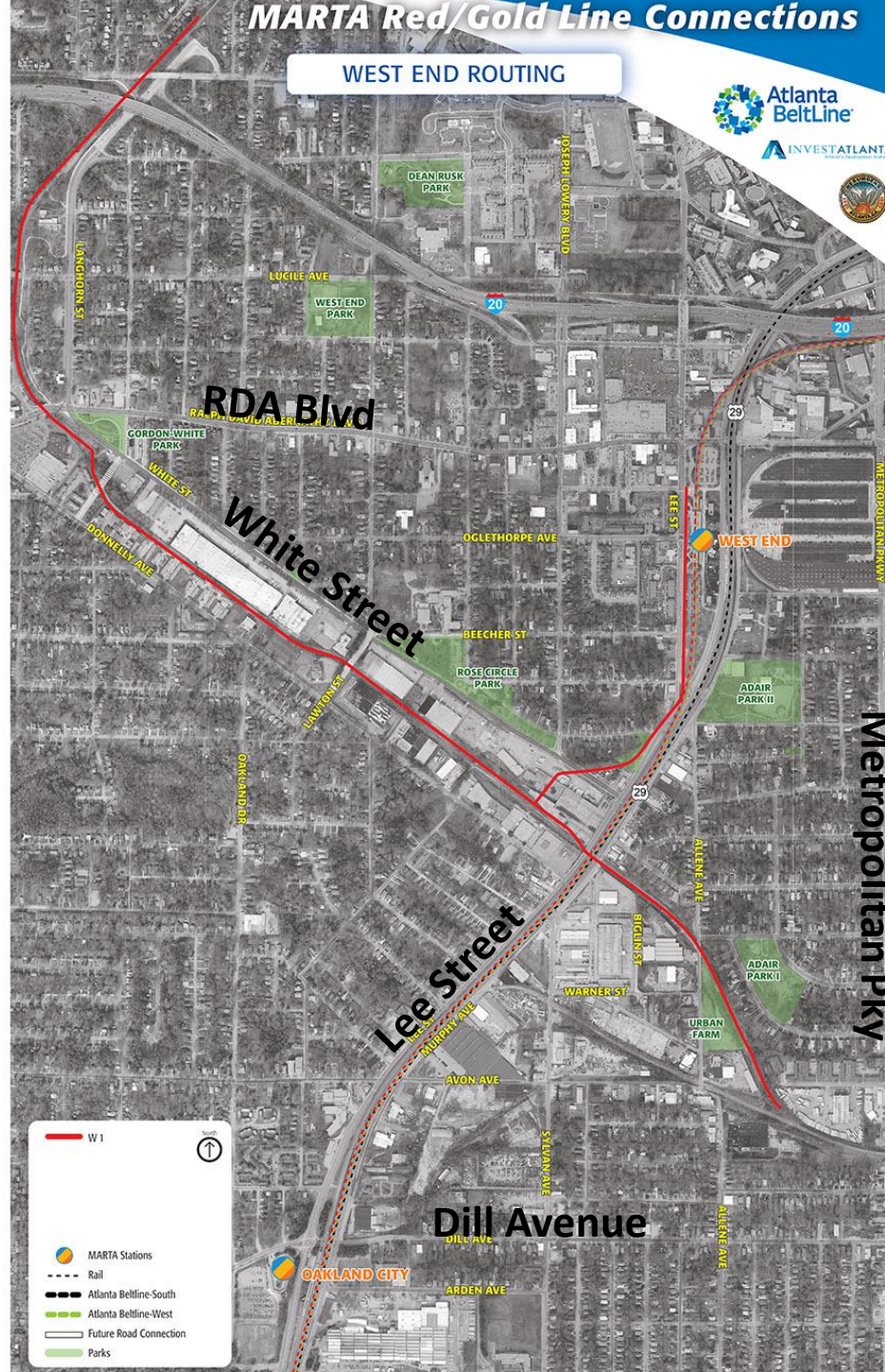
WEST END ROUTING



Metropolitan Pkwy

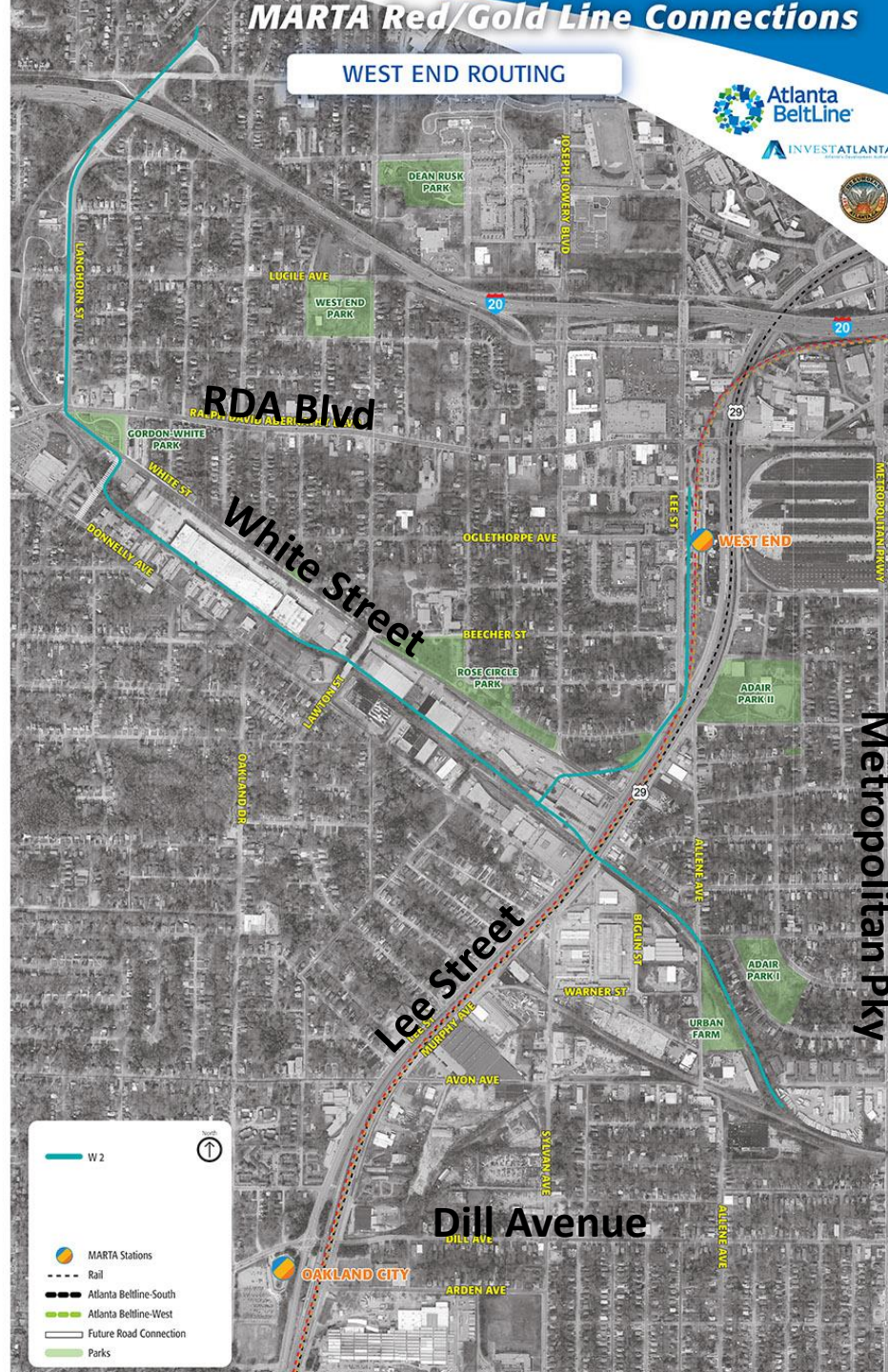
MARTA Red/Gold Line Connections

WEST END ROUTING



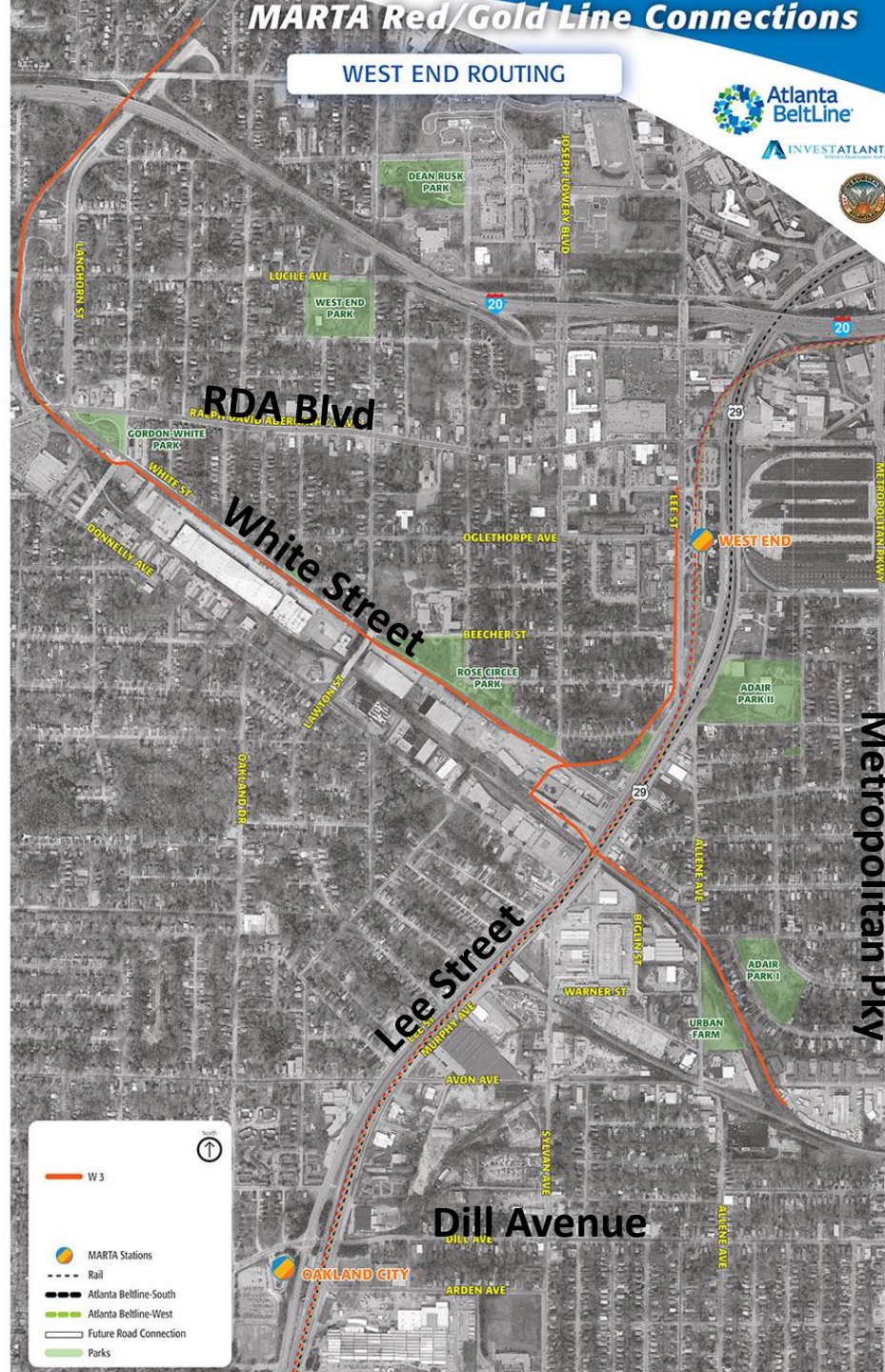
MARTA Red/Gold Line Connections

WEST END ROUTING



MARTA Red/Gold Line Connections

WEST END ROUTING

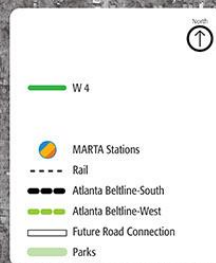


MARTA Red/Gold Line Connections

WEST END ROUTING

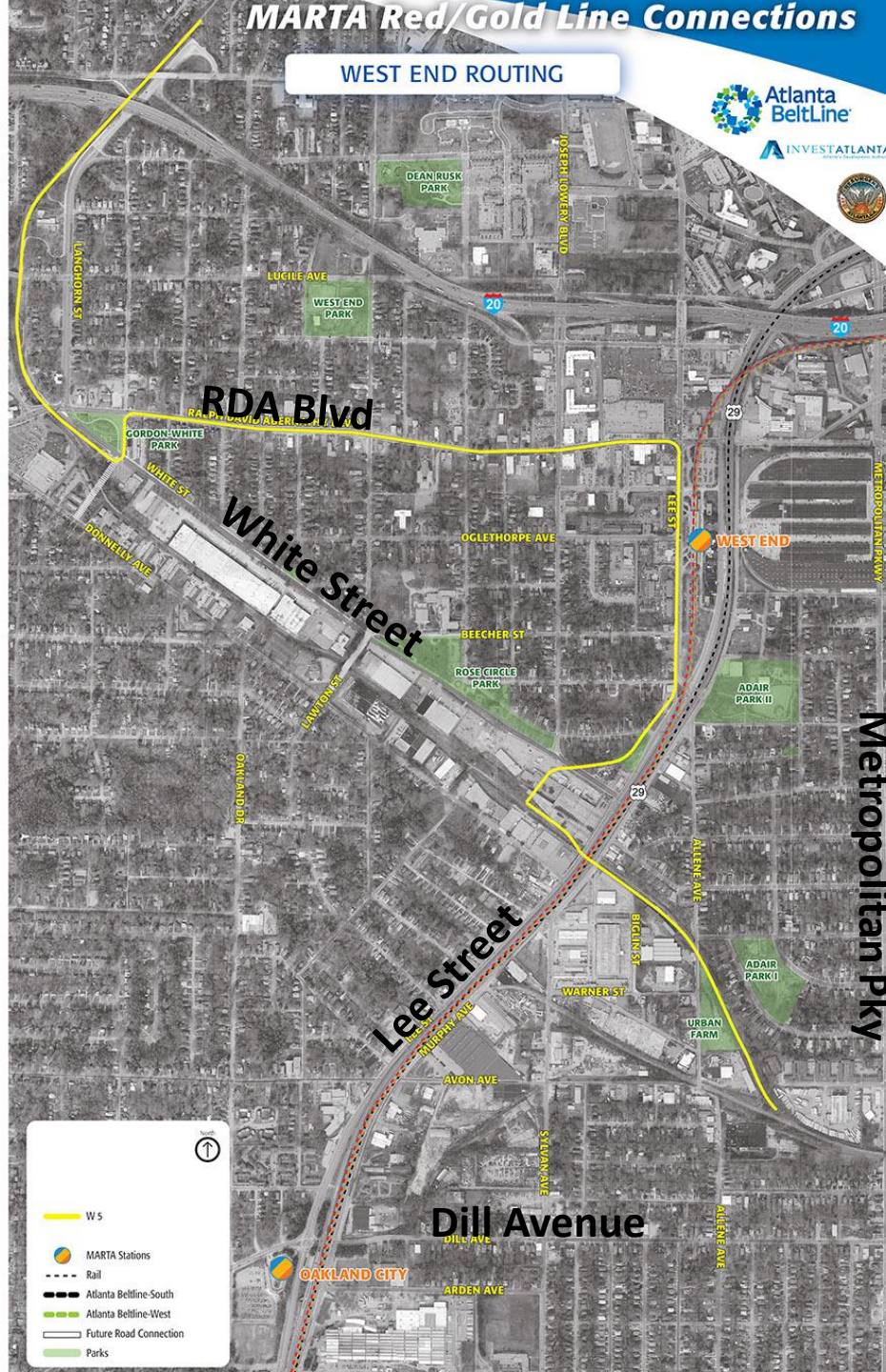


INVESTATLANTA



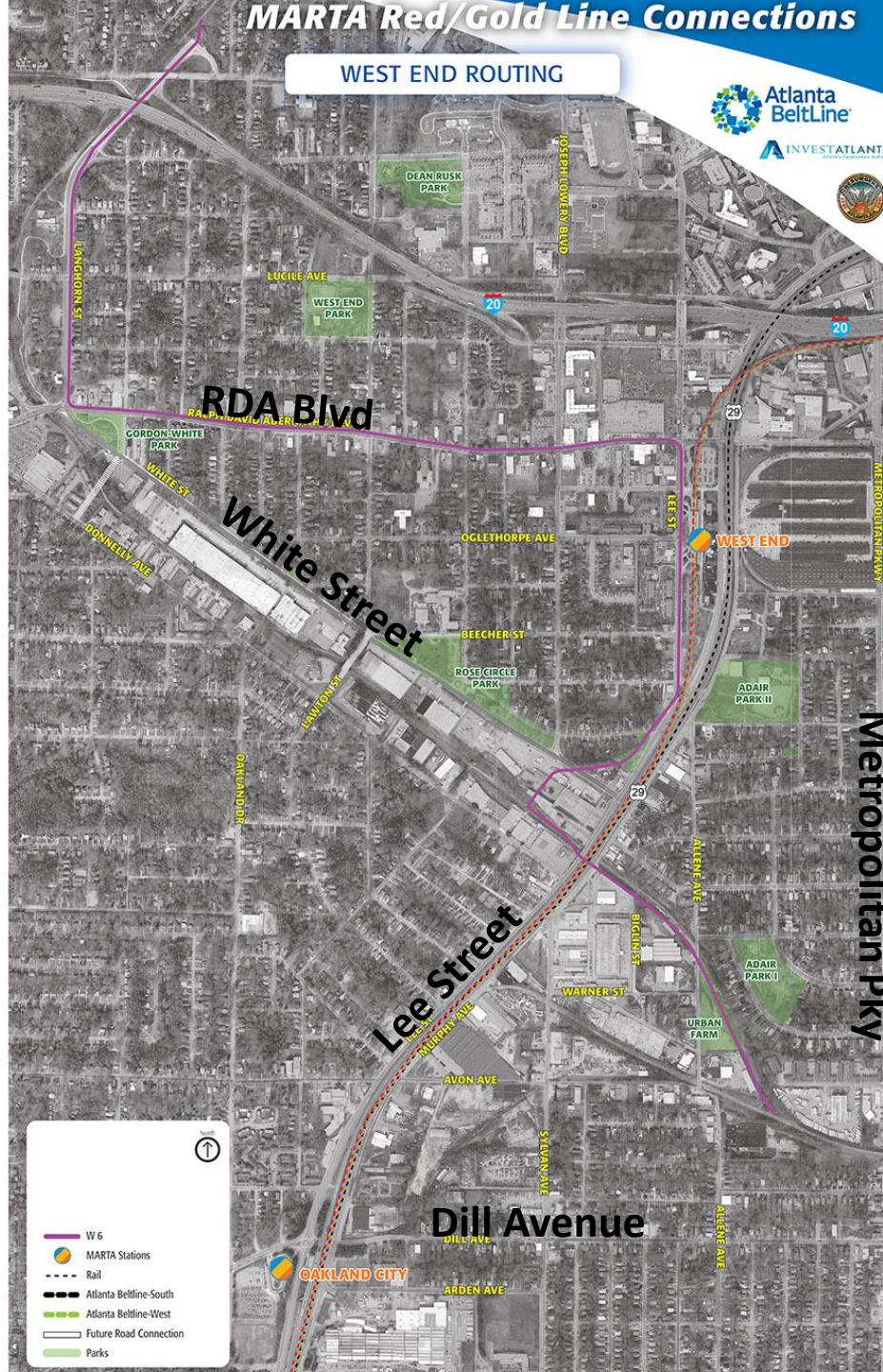
MARTA Red/Gold Line Connections

WEST END ROUTING



MARTA Red/Gold Line Connections

WEST END ROUTING

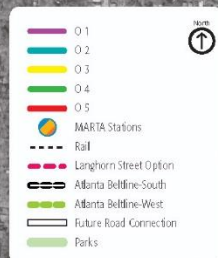
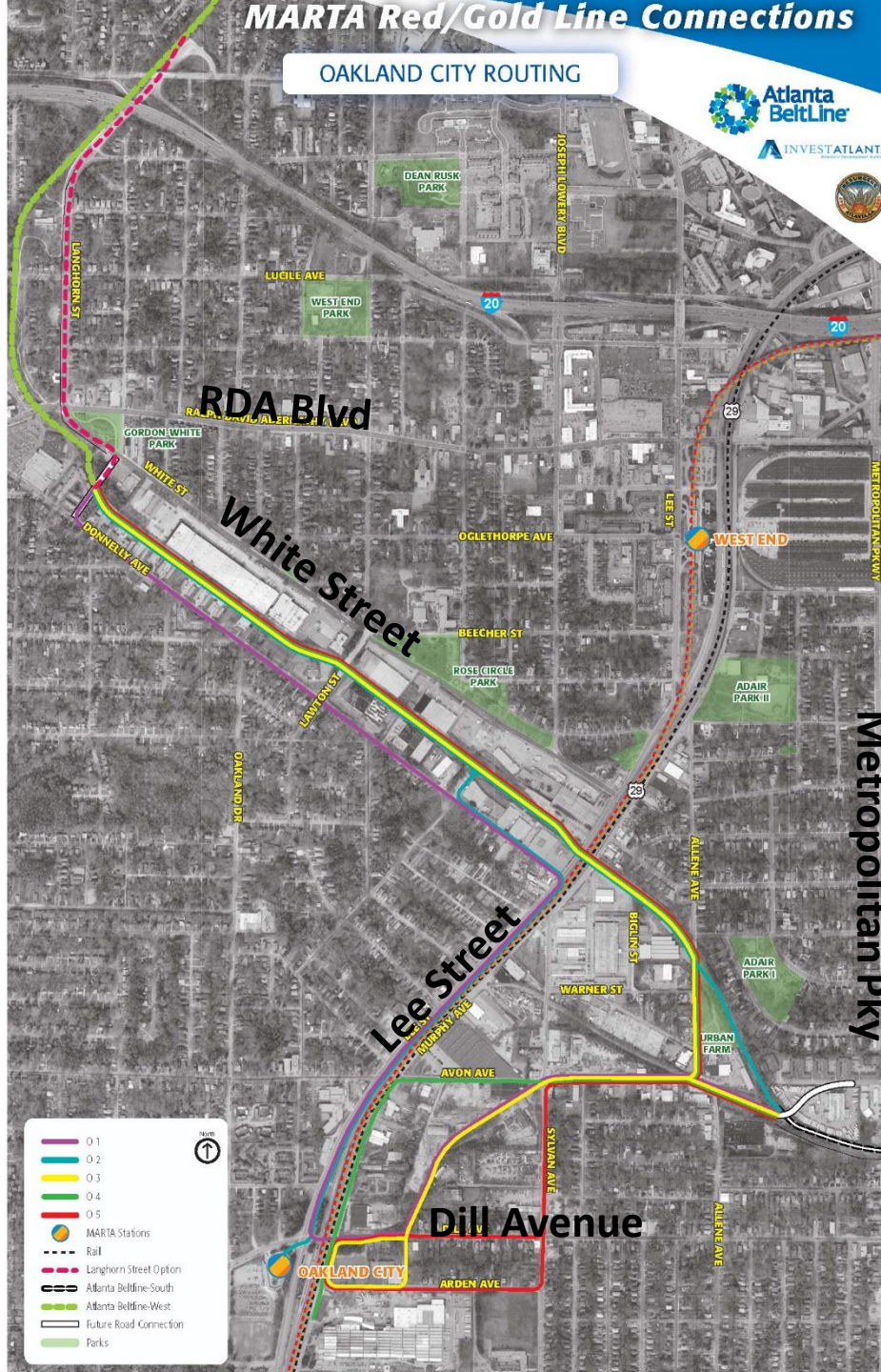


MARTA Red/Gold Line Connections

OAKLAND CITY ROUTING



INVEST ATLANTA



Metropolitan Pky

RDA Blvd

White Street

Lee Street

Dill Avenue

OAKLAND CITY

ALLENE AVE

ALLENE AVE

ALLENE AVE

ALLENE AVE

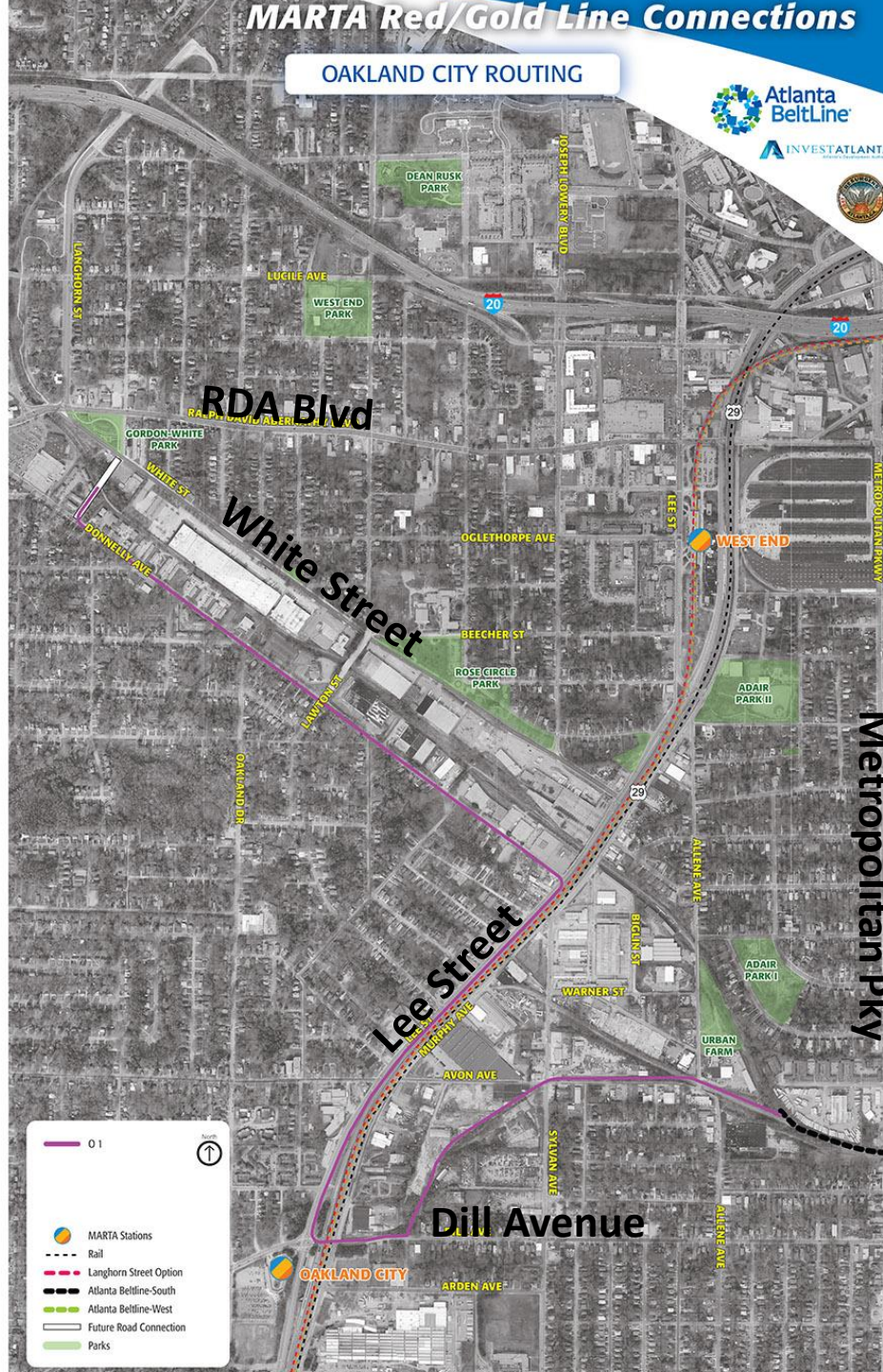
ALLENE AVE

ALLENE AVE

ALLENE AVE

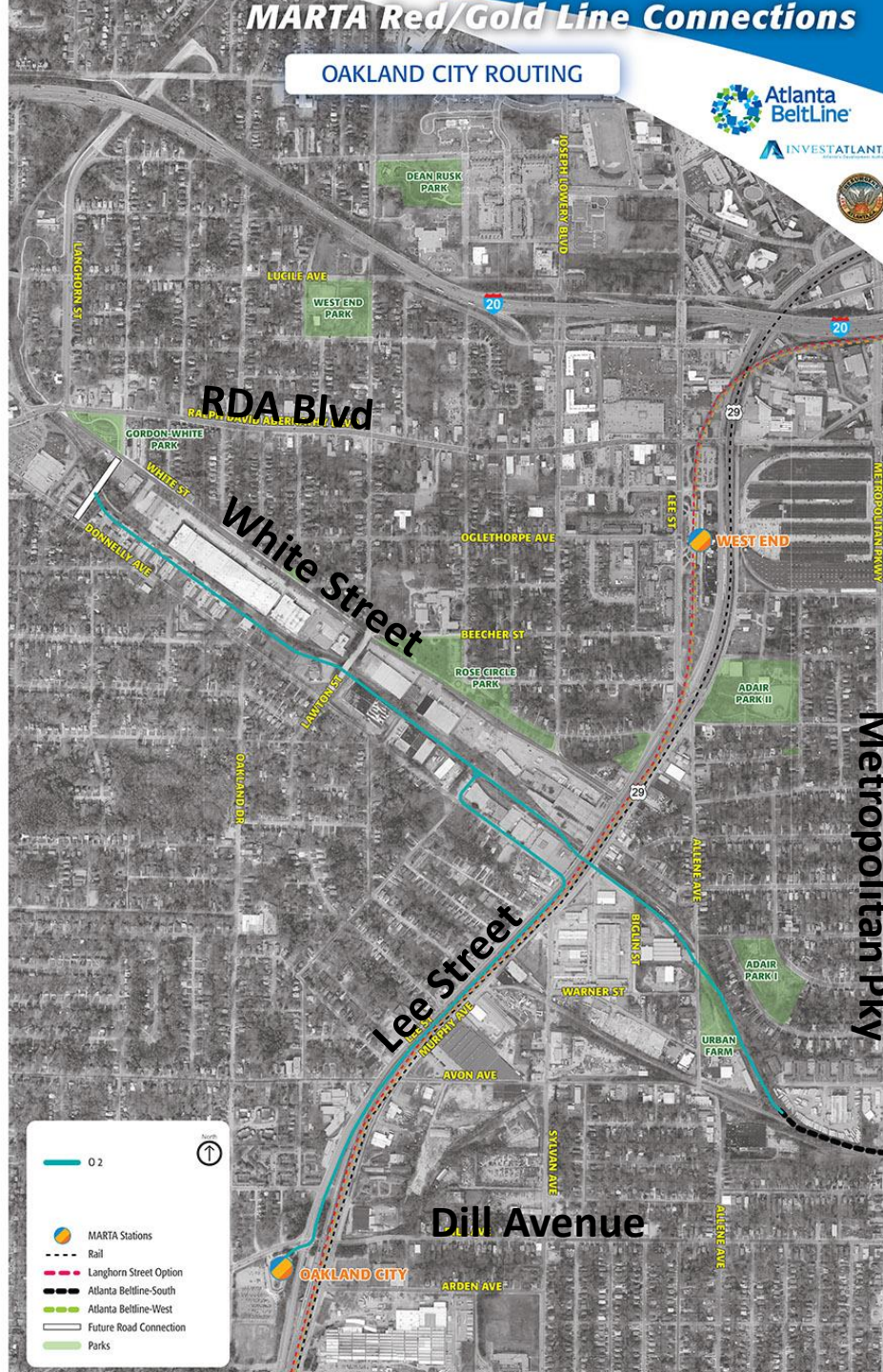
MARTA Red/Gold Line Connections

OAKLAND CITY ROUTING



MARTA Red/Gold Line Connections

OAKLAND CITY ROUTING

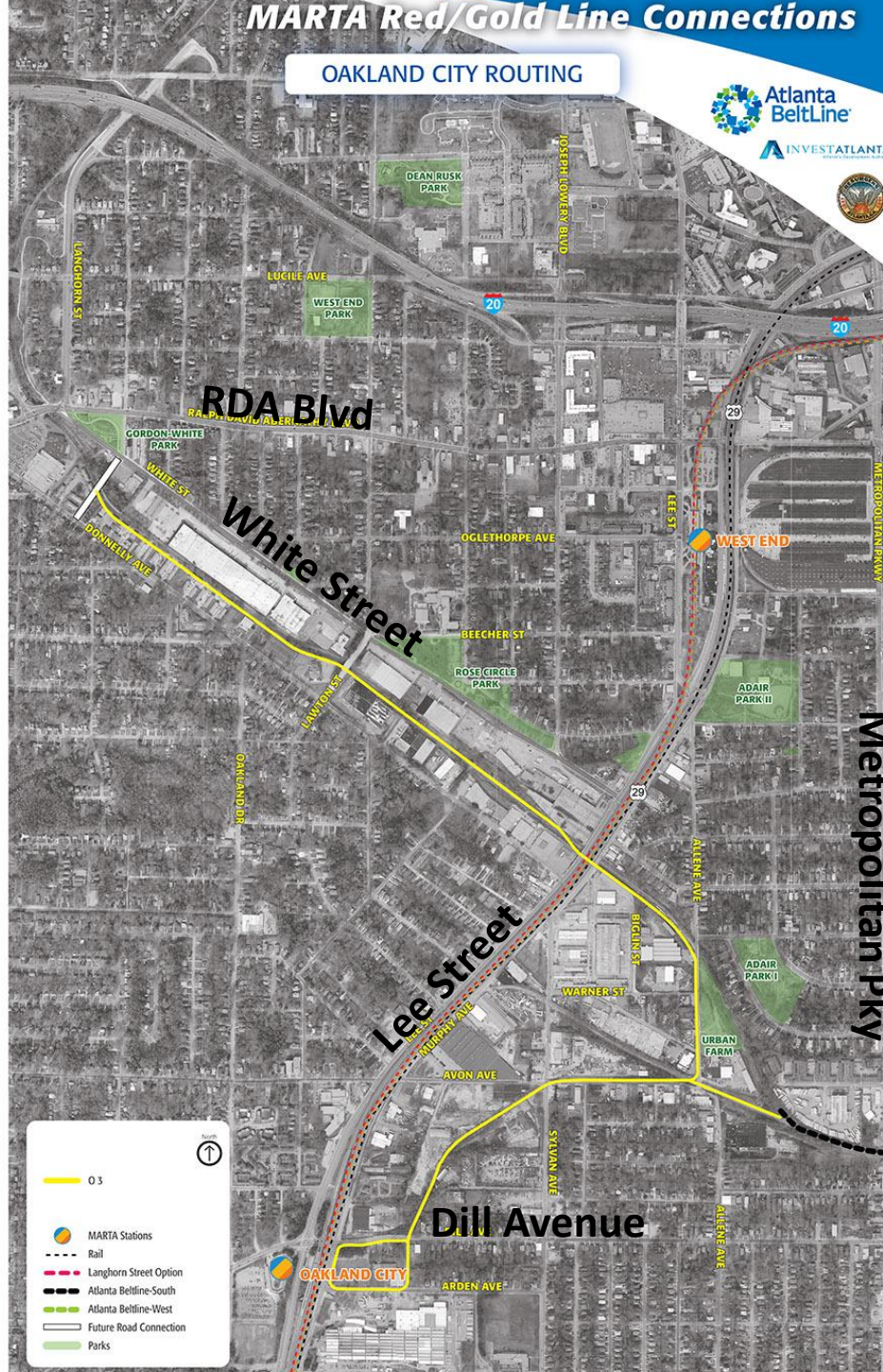


MARTA Red/Gold Line Connections

OAKLAND CITY ROUTING



INVEST ATLANTA



0.3

MARTA Stations

Rail

Langhorn Street Option

Atlanta Beltline-South

Atlanta Beltline-West

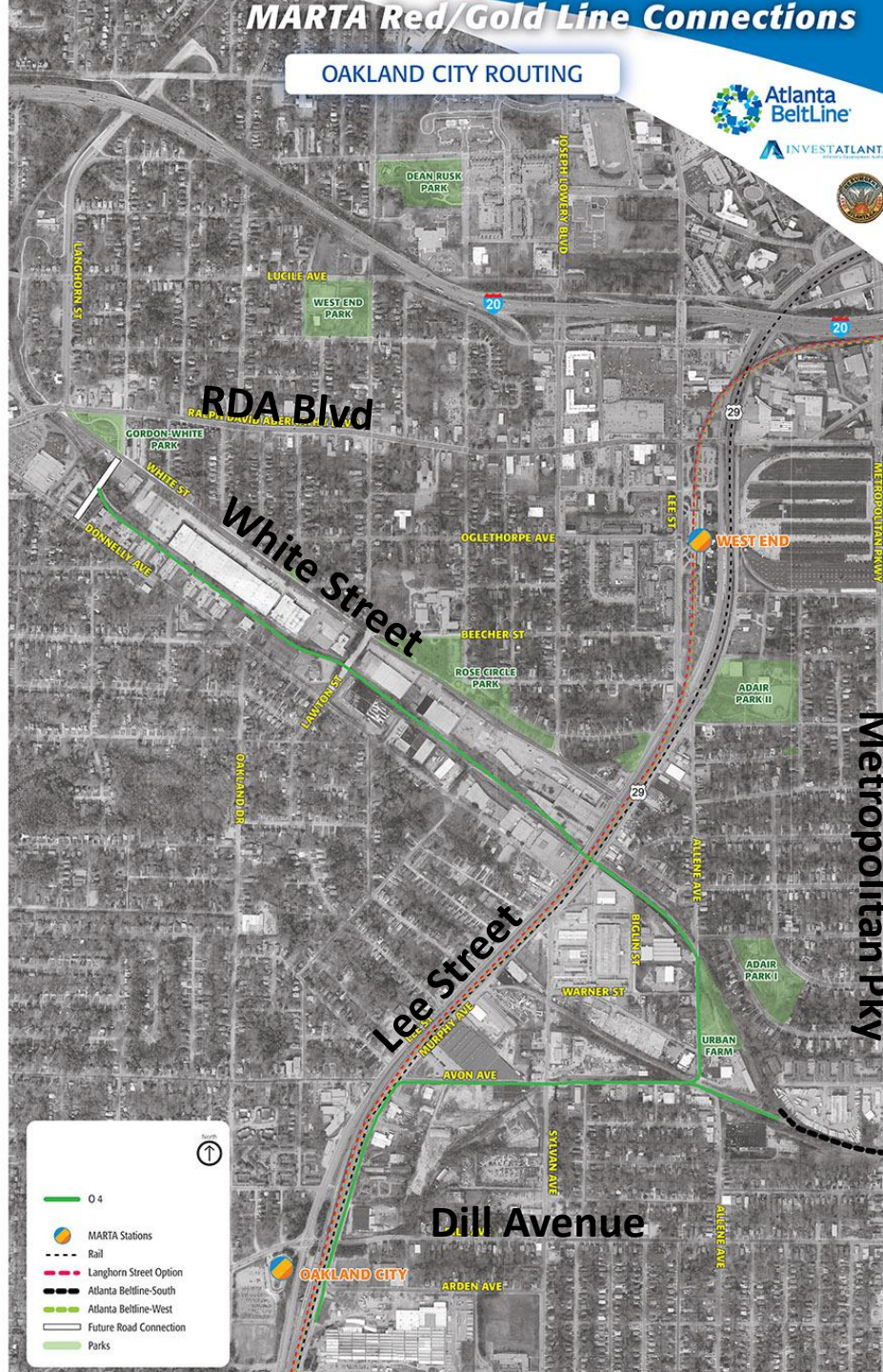
Future Road Connection

Parks

Metropolitan Pkwy

MARTA Red/Gold Line Connections

OAKLAND CITY ROUTING

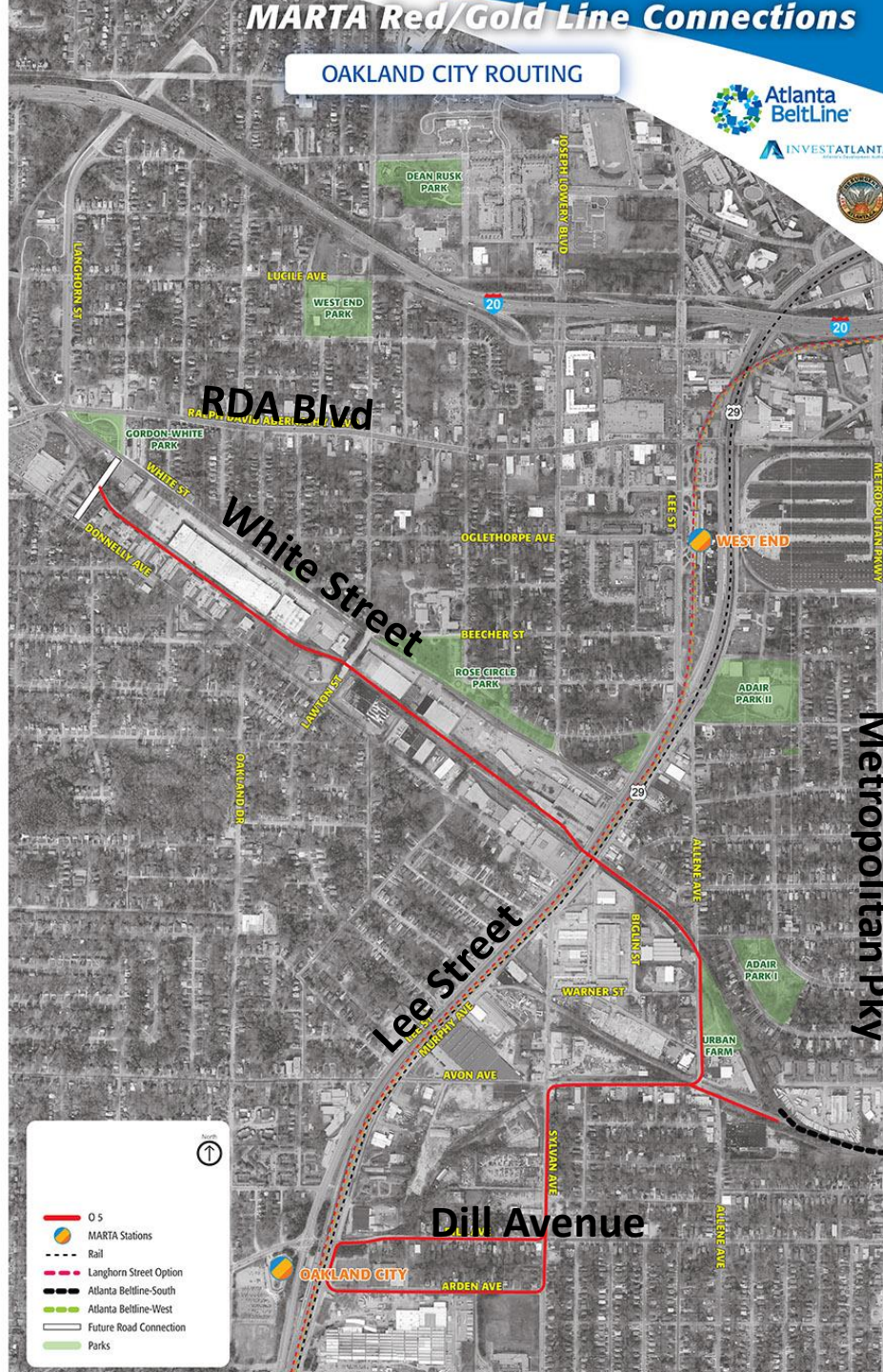


MARTA Red/Gold Line Connections

OAKLAND CITY ROUTING



INVESTATLANTA



- O/S
- MARTA Stations
- Rail
- Langhorn Street Option
- Atlanta Beltline-South
- Atlanta Beltline-West
- Future Road Connection
- Parks

MARTA Red/Gold Line Connections

MURPHY IN-FILL ROUTING



- MARTA Stations
- Rail
- Atlanta BeltLine-South
- Atlanta BeltLine-West
- Future Road Connection
- Parks



Preference Exercise

Transit Routing Options / MARTA Connectivity

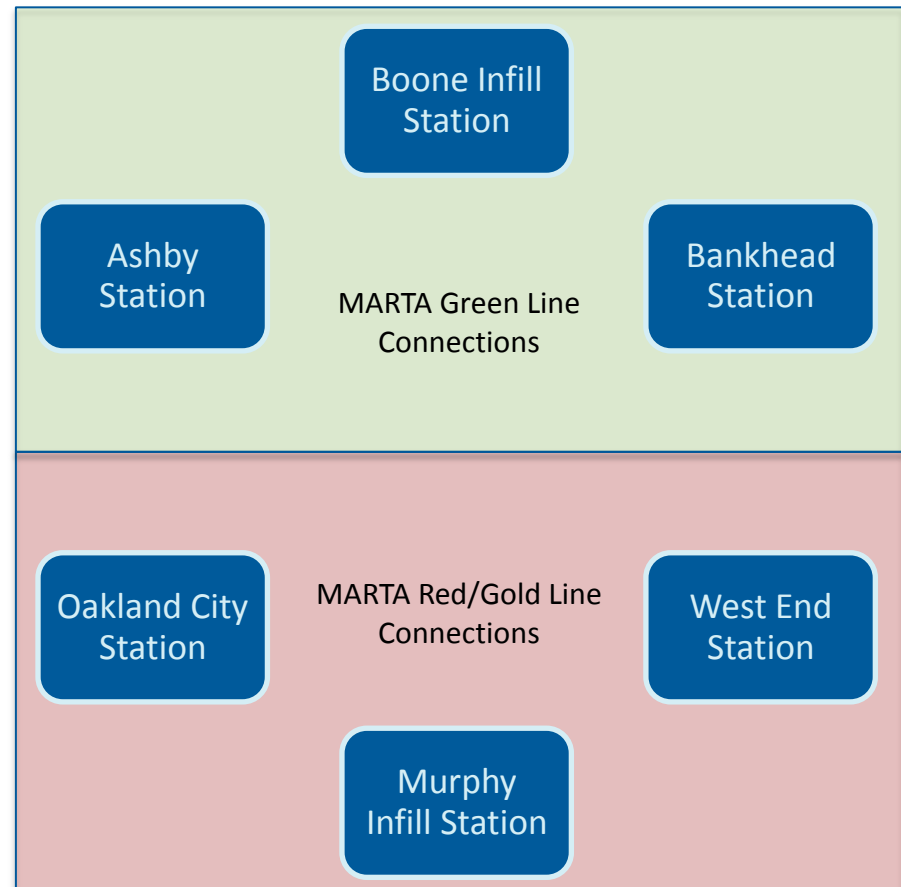


Atlanta
BeltLine



ATLANTA STREETCAR

- Four boards are for indicating your preferred routing, by MARTA station connection
- Two boards are for indicating your preferred MARTA station connection, by focus area
- Please indicate your preferences with green dots (like most) and orange dots (like least)
- Please label your dots with the route option number (GL1, NL3)
- Explanatory comments should be on sticky-notes



Contact Information



Atlanta
BeltLine



ATLANTA STREETCAR

Jonathan Lewis, AICP

Interim Assistant Director of Planning -
Transportation
City of Atlanta, Department of Planning
JLewis@atlantaga.gov

Shaun Green, PE

Senior Transit Engineer
Atlanta BeltLine, Inc.
sgreen@atlbeltline.org

Nathan Soldat

Community Engagement Advocate
Atlanta BeltLine, Inc.
nsoldat@atlbeltline.org

Document confirmed transit
routes and environmental
resources



Continue to engage
communities and coordinate
with resource agencies



Proceed with technical work
based on documented
transit routes