

# Transit Route Options and MARTA Connectivity Assessments

Atlanta BeltLine West

*Stakeholder Advisory Committee  
Kickoff Meeting  
September 9, 2014*



- **Introductions**

- **Today's Agenda:**

- SAC expectations
- Review project background
- Overview of environmental review process
- Overview of screening process
- Preference exercise
- Open discussion
- Review next steps

- **Adjourn**



# SAC Kick-Off Meeting

*What do we need from you?*



Atlanta  
BeltLine



**Participation** – Take notes and keep interested groups and agencies up-to-date on project recommendations

**Guidance** – Make the planning team aware of issues, concerns, and opportunities

**Feedback** – Ask questions and provide comments after the presentation

**Support** – Get a schedule of anticipated community engagement events and spread the word

# Project Background

## Atlanta BeltLine West







### ***Connect Atlanta Plan***

**November 2008**

### ***Draft Atlanta BeltLine/Atlanta Streetcar System Plan (SSP)***

**March 2014**

**Atlanta Streetcar Finding of No  
Significant Impact (FONSI)**

**April 2011**

**Record of Decision (ROD) for Tier 1  
EIS**

**August 2012**

# Project Background

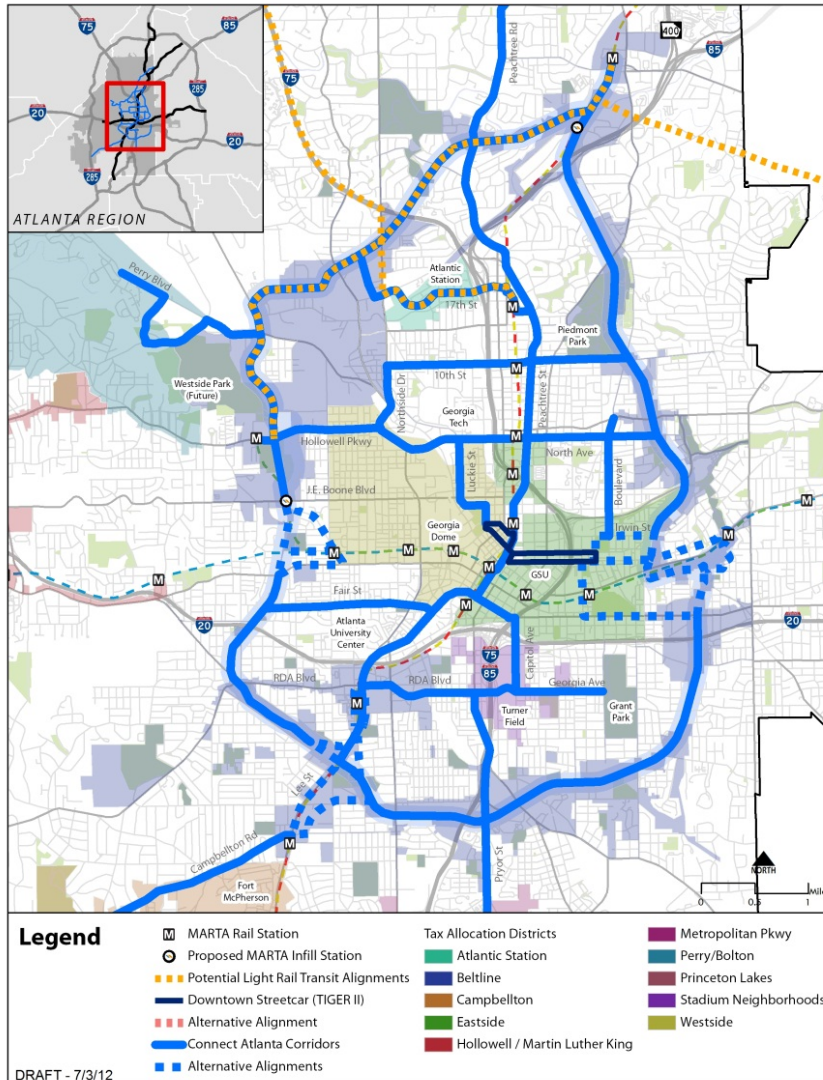
## Atlanta BeltLine/Atlanta Streetcar System Plan



Atlanta  
BeltLine



ATLANTA STREETCAR



### A Supplement to the *Connect Atlanta Plan* and the ABI Strategic Implementation Plan (SIP)

Phasing of transit in SIP based on this strategy

Includes all streetcar lines in the Connect Atlanta Plan including Atlanta BeltLine

Project evaluation based on Equity, Readiness, Value Capture, Finance, Ridership

Significant stakeholder and public input garnered to date

Integrates Atlanta Streetcar lines and Atlanta BeltLine into a unified system





Streetcar is the transit technology for the Atlanta BeltLine corridor

Comprehensive system network

Complements existing and future MARTA bus and rail services

# Project Background

## Projects in Environmental Review Process



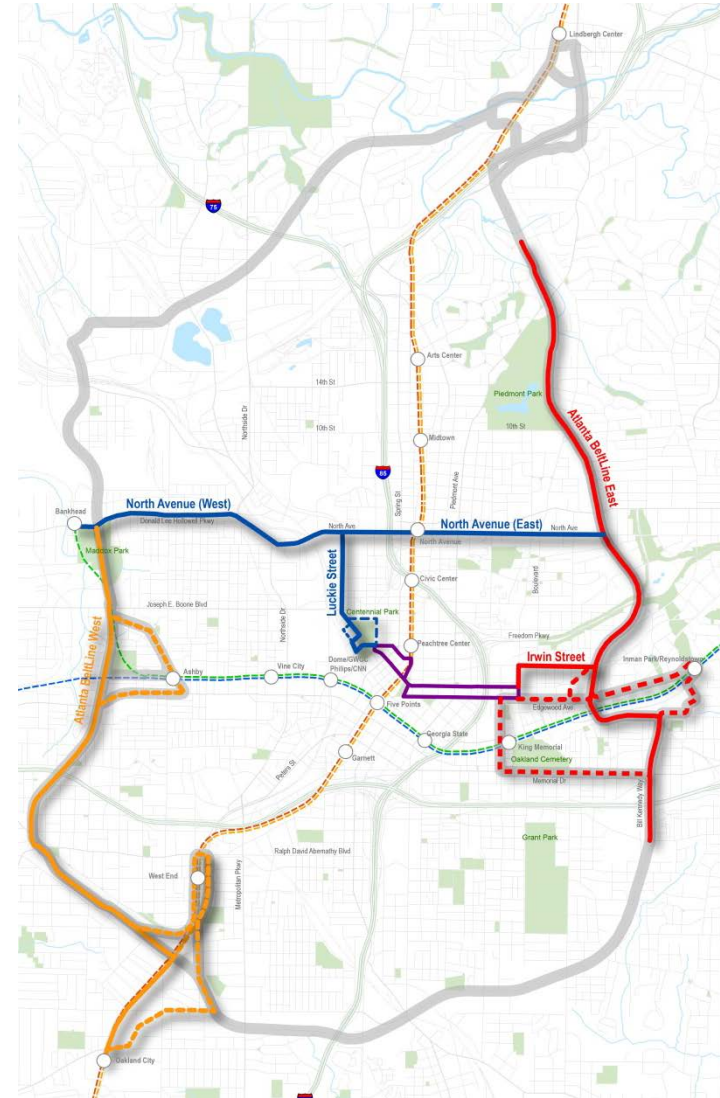
Atlanta  
BeltLine



ATLANTA STREETCAR

- Phase 1 and some Phase 2 of the **Draft Atlanta BeltLine/Atlanta Streetcar System Plan** (SSP). This represents the near-term priorities for the City of Atlanta
- Streetcar Projects currently in Environmental Review Process:

- Atlanta BeltLine East
- Atlanta BeltLine West
- Midtown/Crosstown Corridor







Atlanta  
BeltLine



ATLANTA STREETCAR

# Environmental Review Process

## Atlanta BeltLine West



# Environmental Review Process

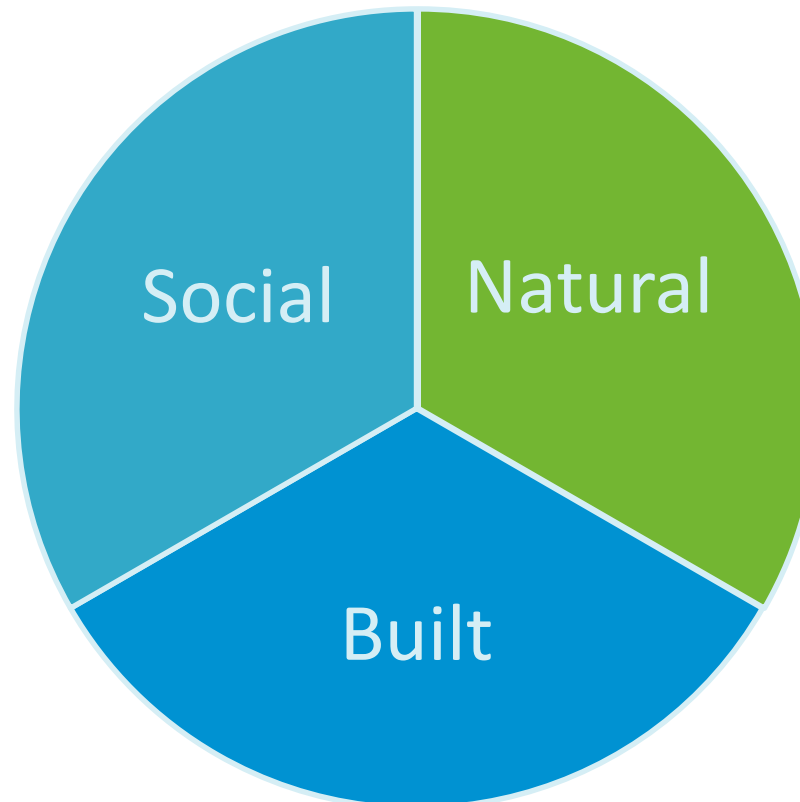
*What is the Environmental Review process?*



Atlanta  
BeltLine



- Required for all actions seeking Federal funding as regulated by National Environmental Policy Act (NEPA) of 1972





# Environmental Review Process

*What are the steps?*



Atlanta  
BeltLine



## STEPS IN THE ENVIRONMENTAL REVIEW PROCESS

Review Previous Planning Work

Route Selection and MARTA Connectivity

Technical Studies and Detailed Evaluation

Complete Documentation

Finding of No Significant Impact



Engineering

# Environmental Review Process

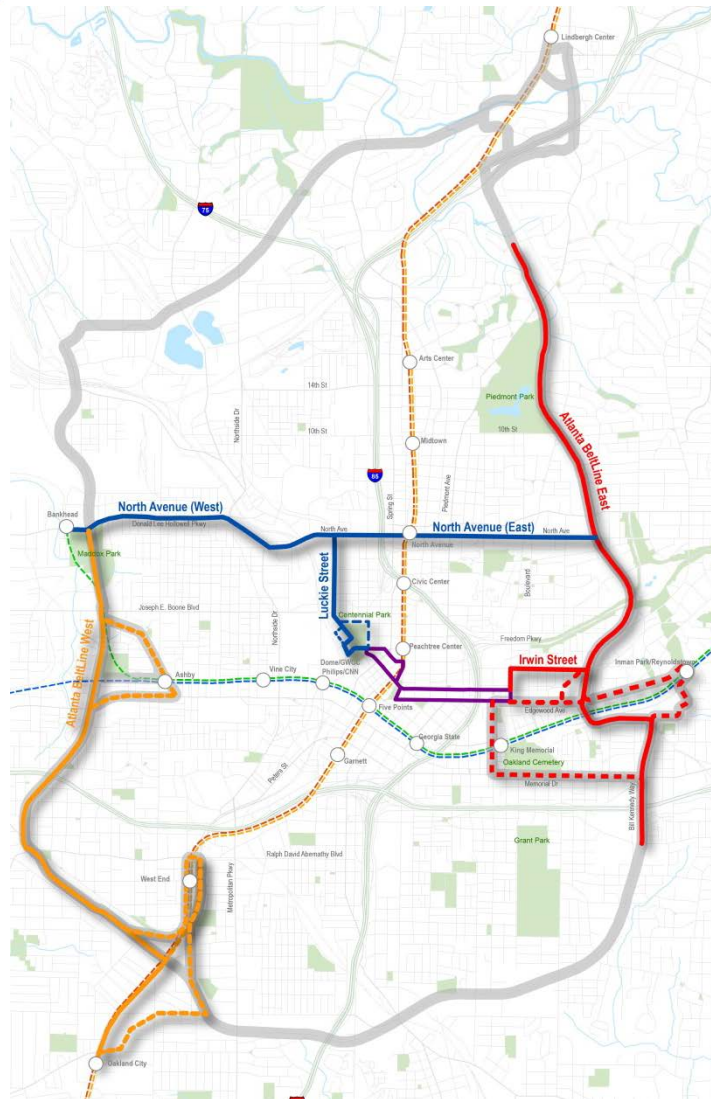
*Which corridors are involved?*



Atlanta  
BeltLine



ATLANTA STREETCAR



Atlanta BeltLine East



-Alignment Options



Midtown/Crosstown Corridor



-Alignment Options



Atlanta BeltLine West



-Alignment Options



Atlanta Streetcar\*



MARTA Red/Gold Line\*



MARTA Blue/Green Line\*

\* Shown for Reference





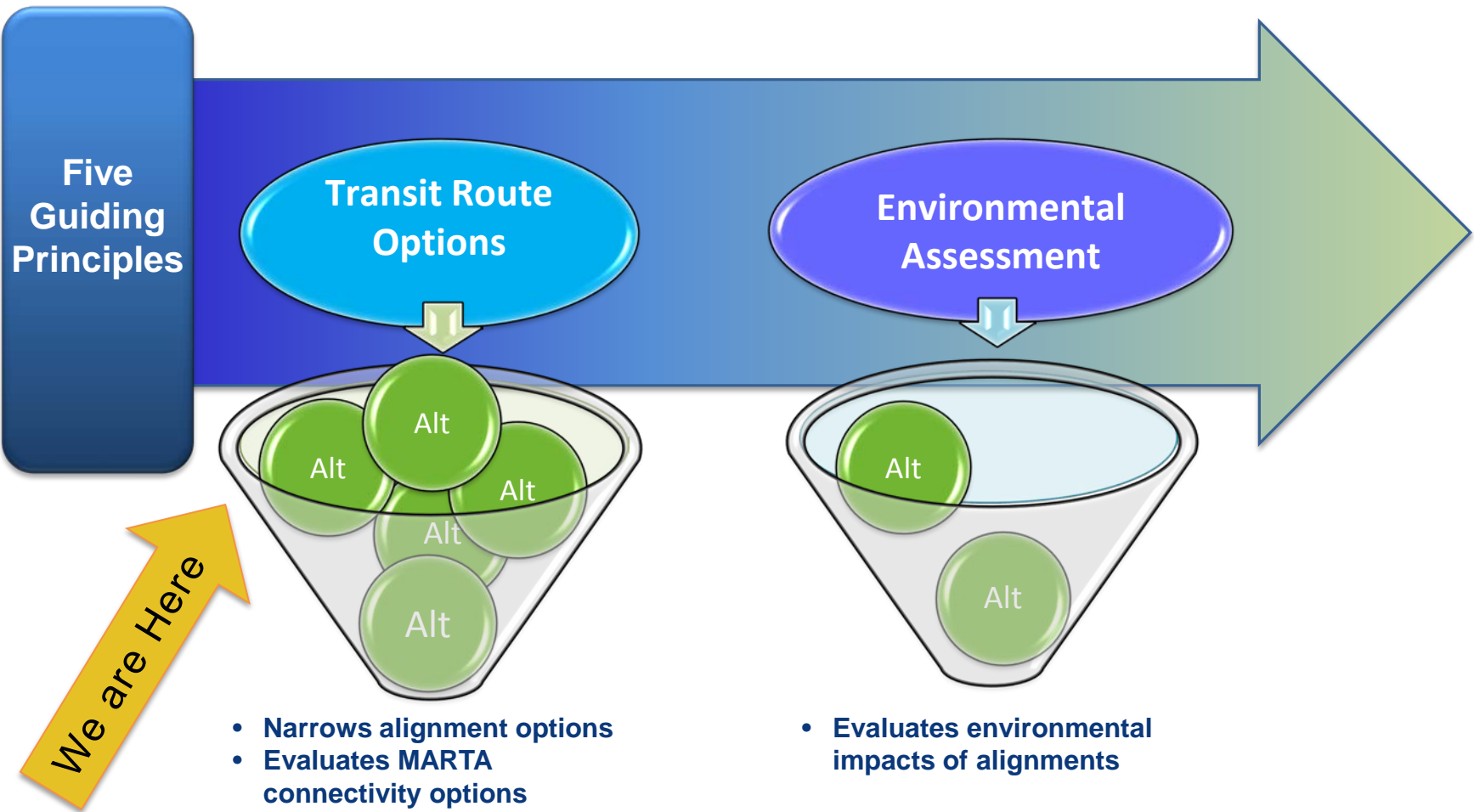
## Screening Process

### Atlanta BeltLine West

- **Five Guiding Principles**

- Project Readiness
- Practicality / Ridership
- Equity
- Financial Options
- Development Impact



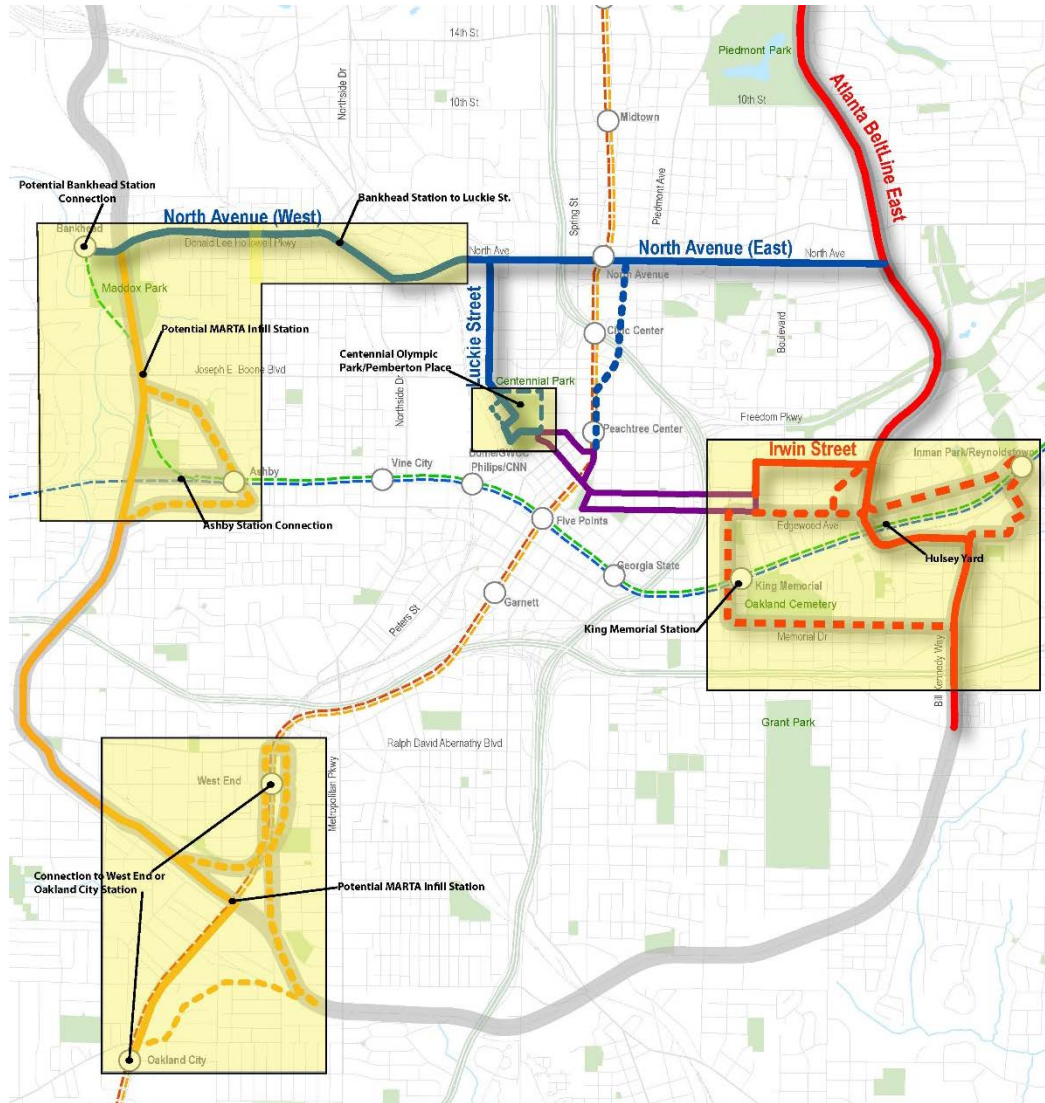


## Screening Process

### System-wide Focus Areas



# Atlanta BeltLine





# Screening Process

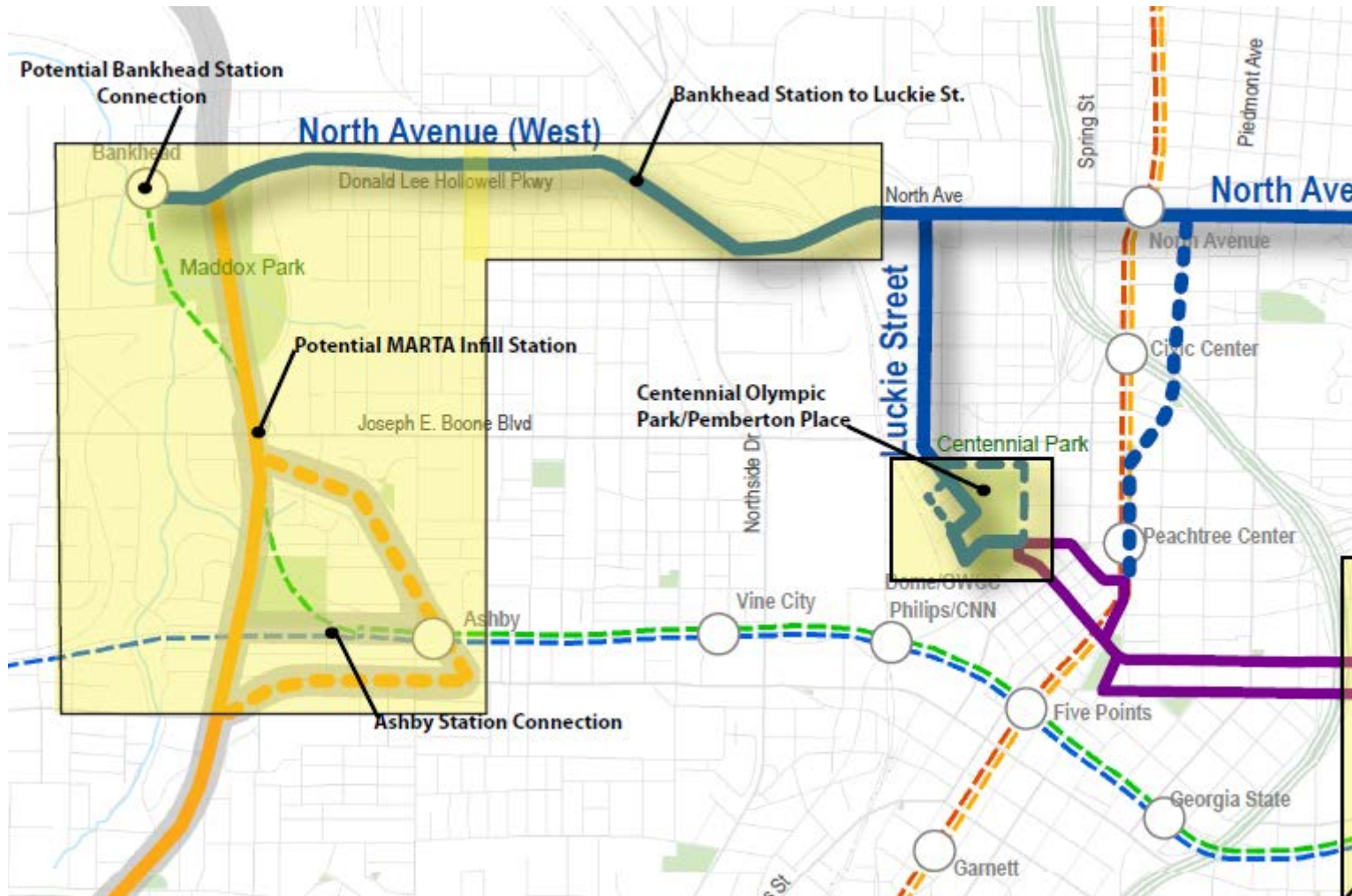
## Green Line Connection



Atlanta  
BeltLine



ATLANTA STREETCAR



# Screening Process

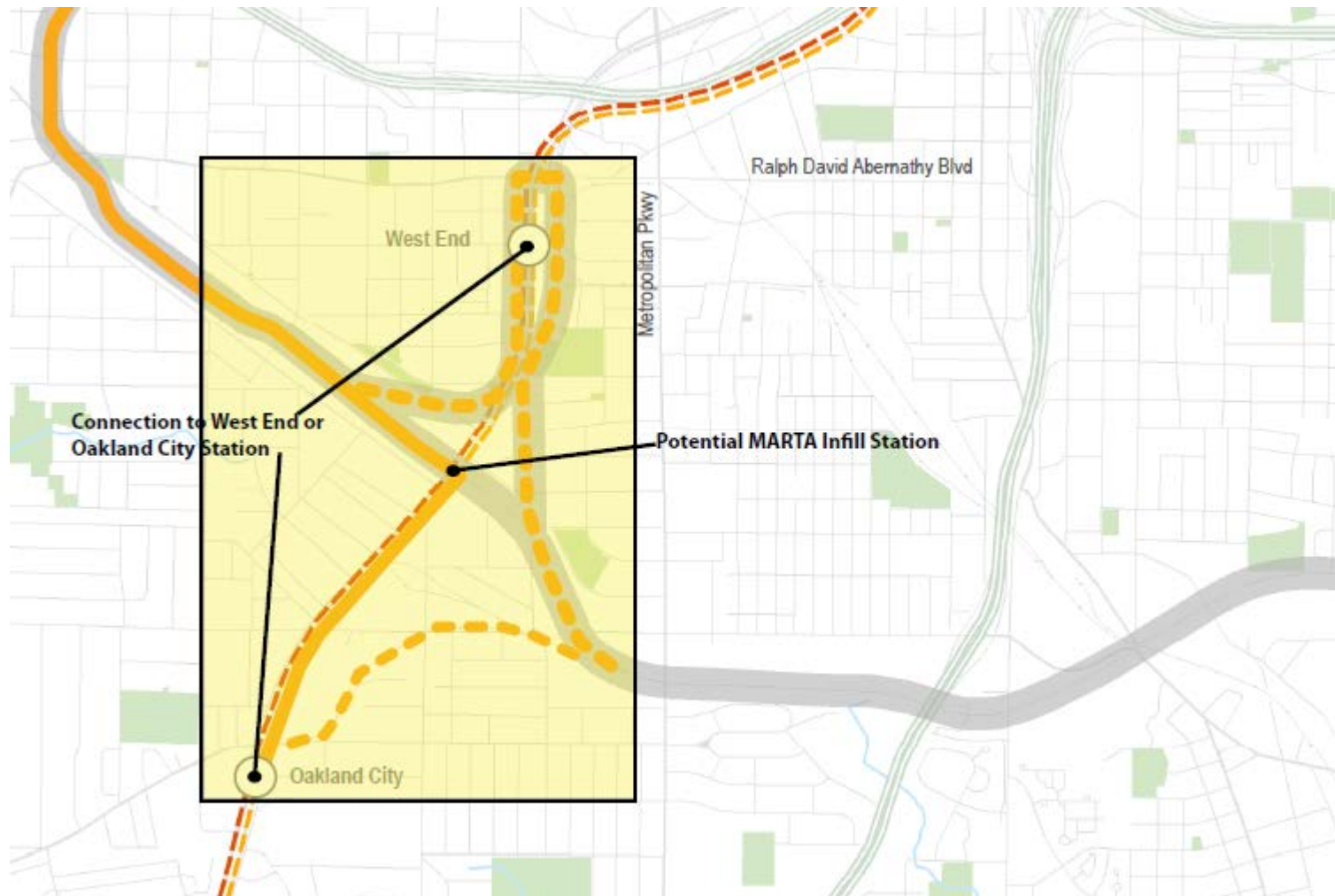
## Red Line / Gold Line Connections



Atlanta  
BeltLine



ATLANTA STREETCAR





# Preference Exercise

## Transit Route Options / MARTA Connectivity

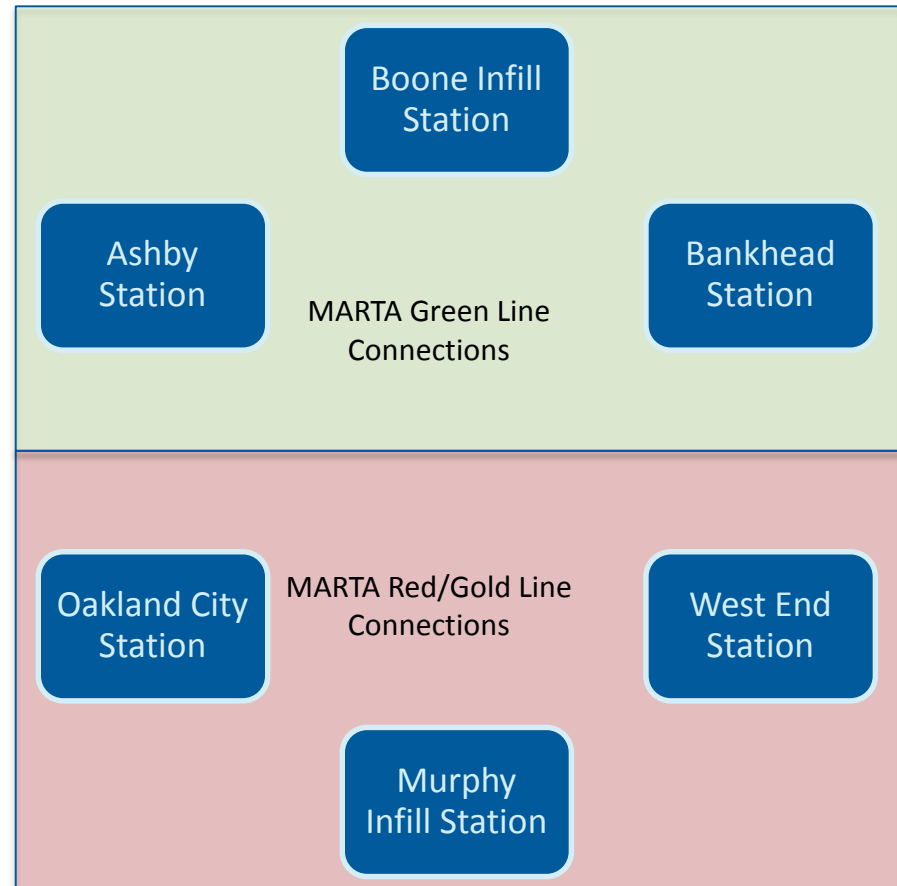


Atlanta  
BeltLine



ATLANTA STREETCAR

- Six boards are for indicating your preferred transit routes, by MARTA station connection
- Two boards are for indicating your preferred MARTA station connection, by focus area
- Please indicate your preferences with green dots (like more) and orange dots (like less)
- Please label your dots with the route option number (GL1, NL3)
- Explanatory comments should be on sticky-notes
- Reconvene in 20 minutes





## • Open Discussion

- Project background
- Environmental review process
- Screening process
- Preference exercise



# Milestone Schedule



Atlanta  
BeltLine



We are here

Transit Route  
Options/MARTA  
Connectivity  
Assessments

June 2014 to  
November 2014

Technical Studies  
and Evaluation

September 2014  
to March 2015

Complete Draft  
Environmental  
Assessment (EA)

March 2015

Public/Agency  
Review and  
Public Hearing

April 2015

Finding of No  
Significant  
Impact (FONSI)

May 2015

Project  
Development  
(PD) Entry  
Request

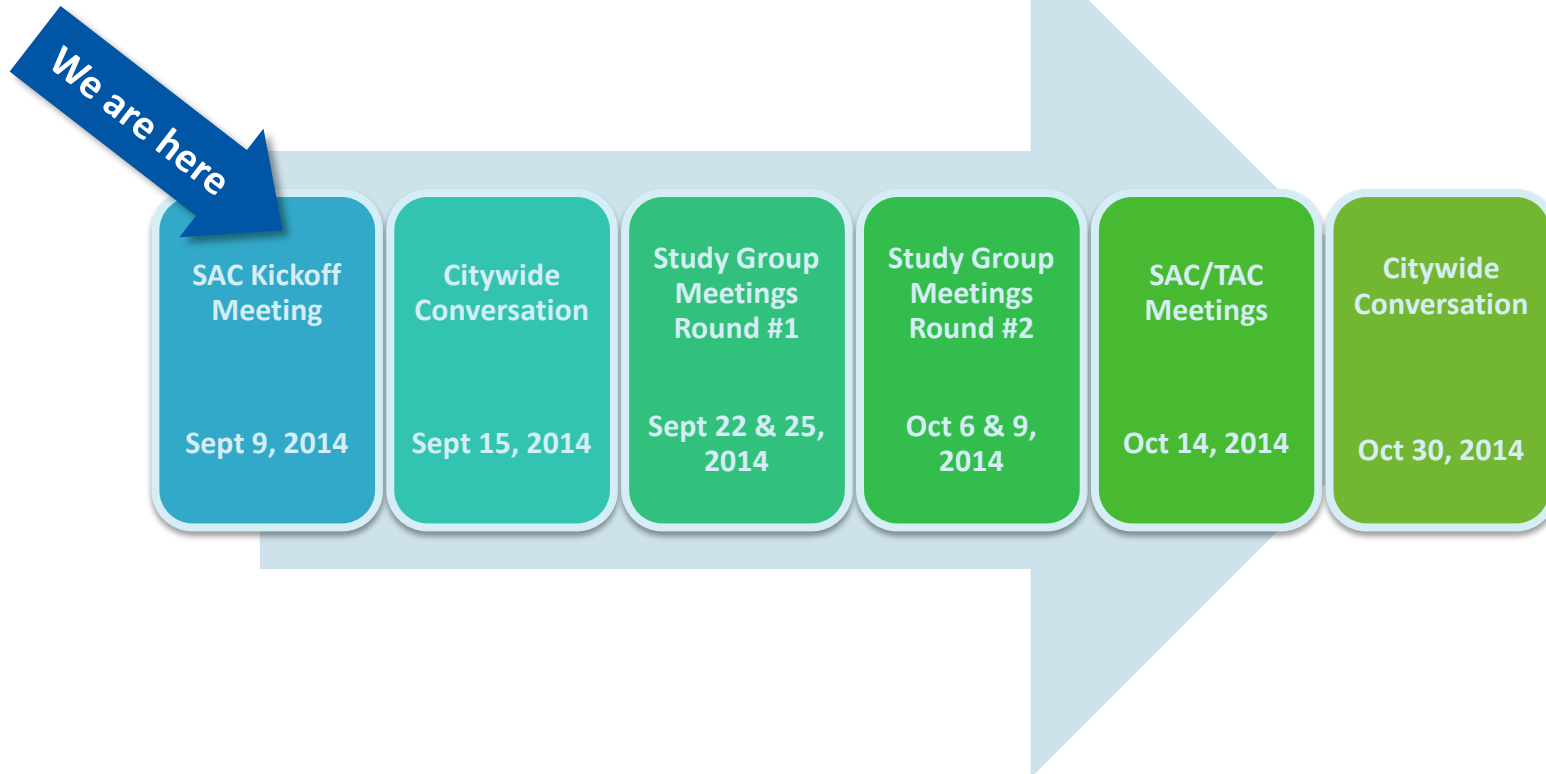
Summer 2015

# Community Engagement Schedule

## Summer and Fall 2014



Atlanta  
BeltLine



**Stakeholder Advisory Committee (SAC):** Advisory committee for each project corridor representing business and property owners, adjacent neighborhoods, and community groups.

**Technical Advisory Committee (TAC):** Advisory committee comprised of representatives with technical and/or environmental expertise.

**Study Groups:** Residents and business owners with an interest in the project within each geographical area.

**Citywide Conversations:** Citywide public meetings are forums to educate the public at large with upcoming plans, policies, and studies.



## Contact Information and Next Steps



**Atlanta  
BeltLine**



### **Jonathan Lewis, AICP**

Interim Assistant Director of Planning -  
Transportation  
City of Atlanta, Department of Planning  
[JLewis@atlantaga.gov](mailto:JLewis@atlantaga.gov)

### **Shaun Green, PE**

Senior Transit Engineer  
Atlanta BeltLine, Inc.  
[sgreen@atlbeltline.org](mailto:sgreen@atlbeltline.org)

### **Nathan Soldat**

Community Engagement Advocate  
Atlanta BeltLine, Inc.  
[nsoldat@atlbeltline.org](mailto:nsoldat@atlbeltline.org)

Document confirmed transit  
routes and environmental  
resources



Continue to engage  
communities and coordinate  
with resource agencies



Proceed with technical work  
based on documented  
transit routes