

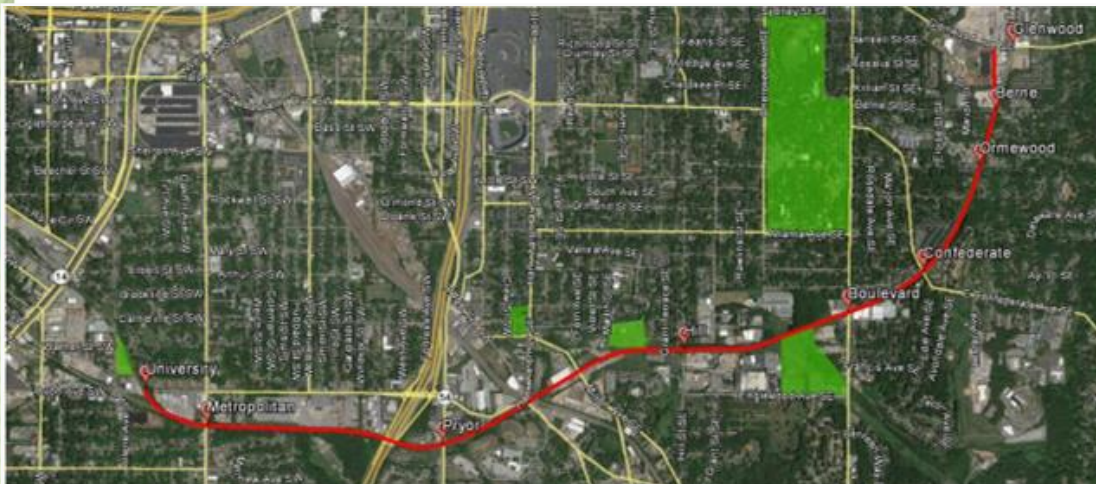


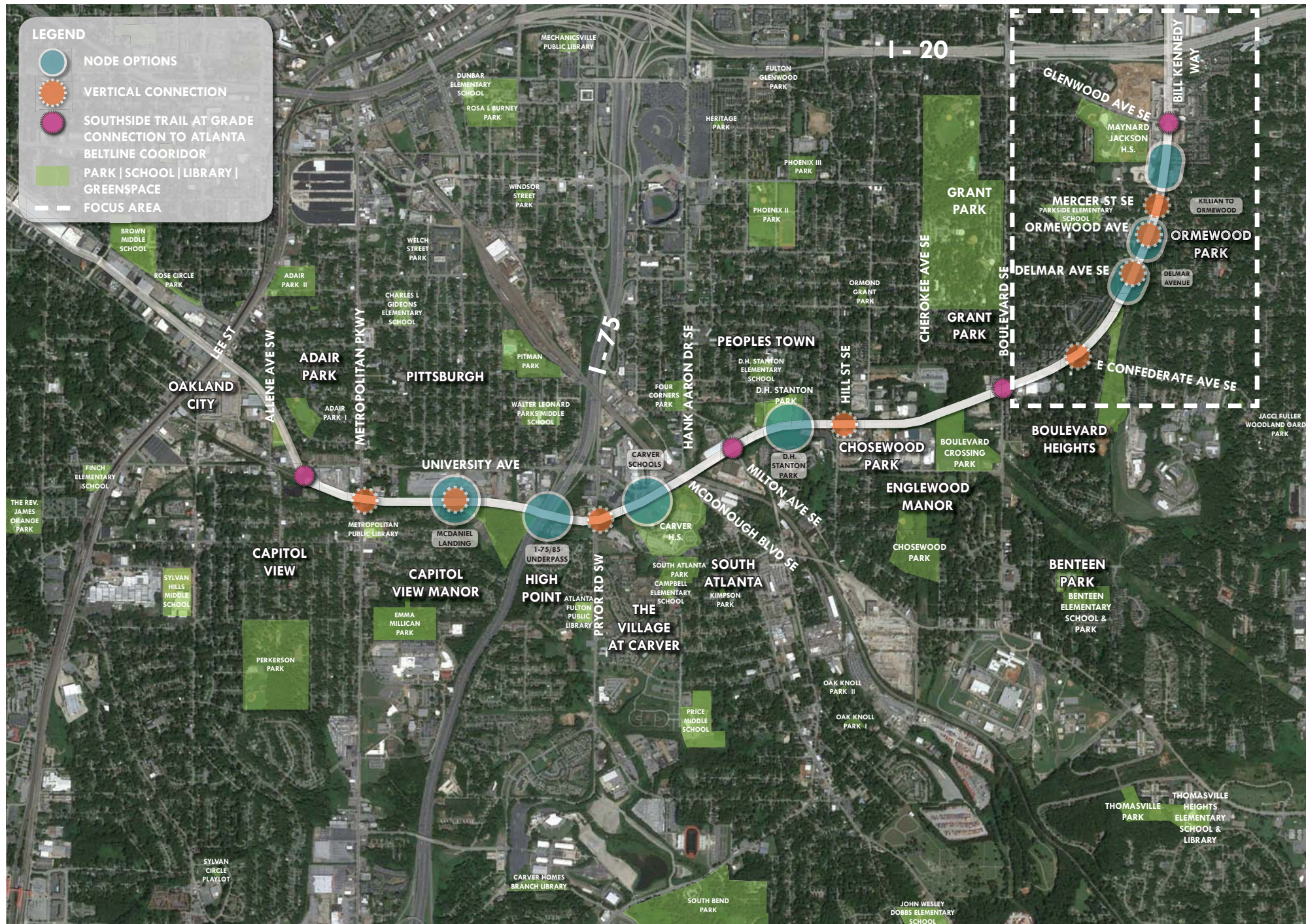
// Southwest + Southeast Study Group: Southside Trail Design

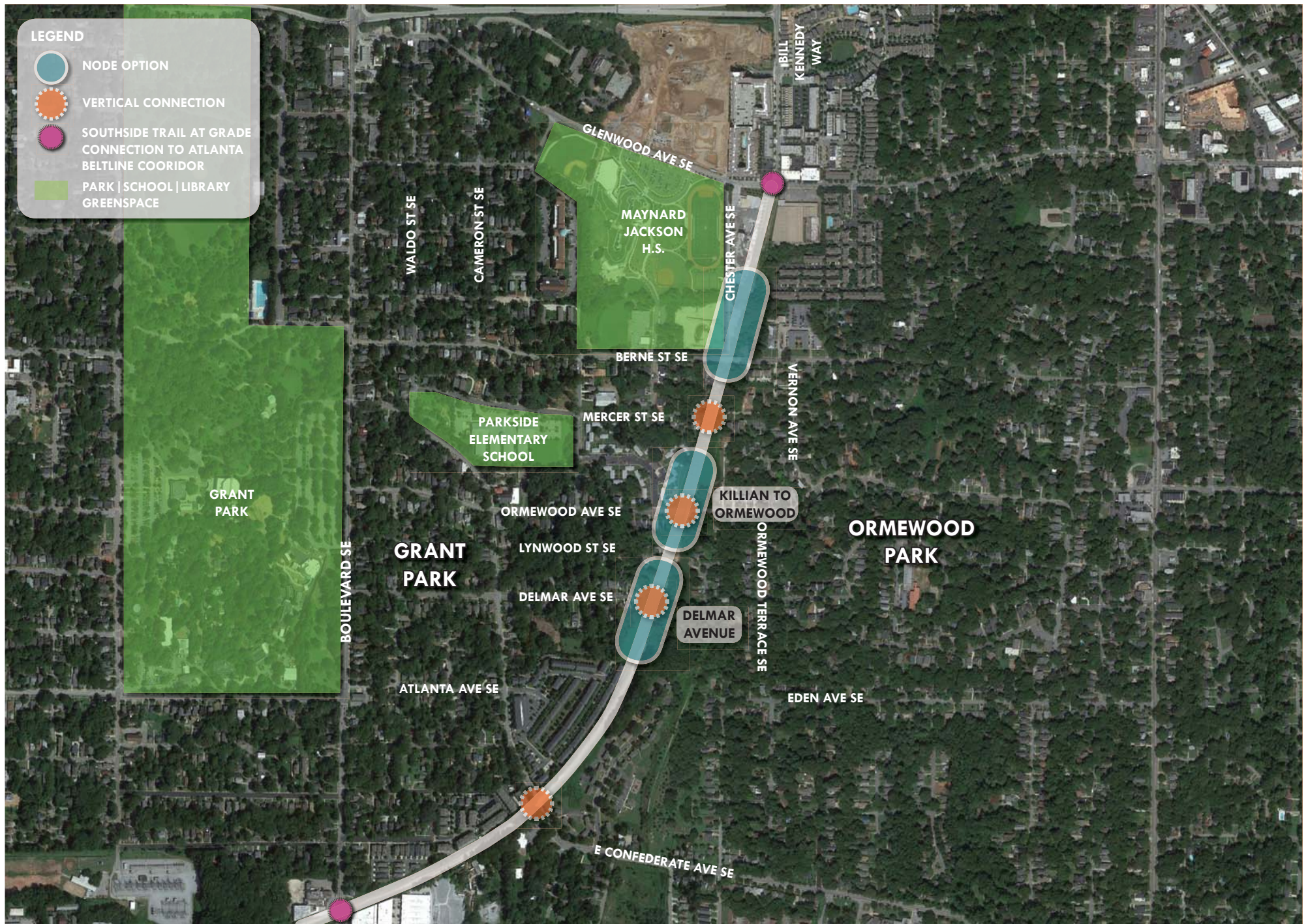
July 12, 2016

// Trails: Southside Corridor

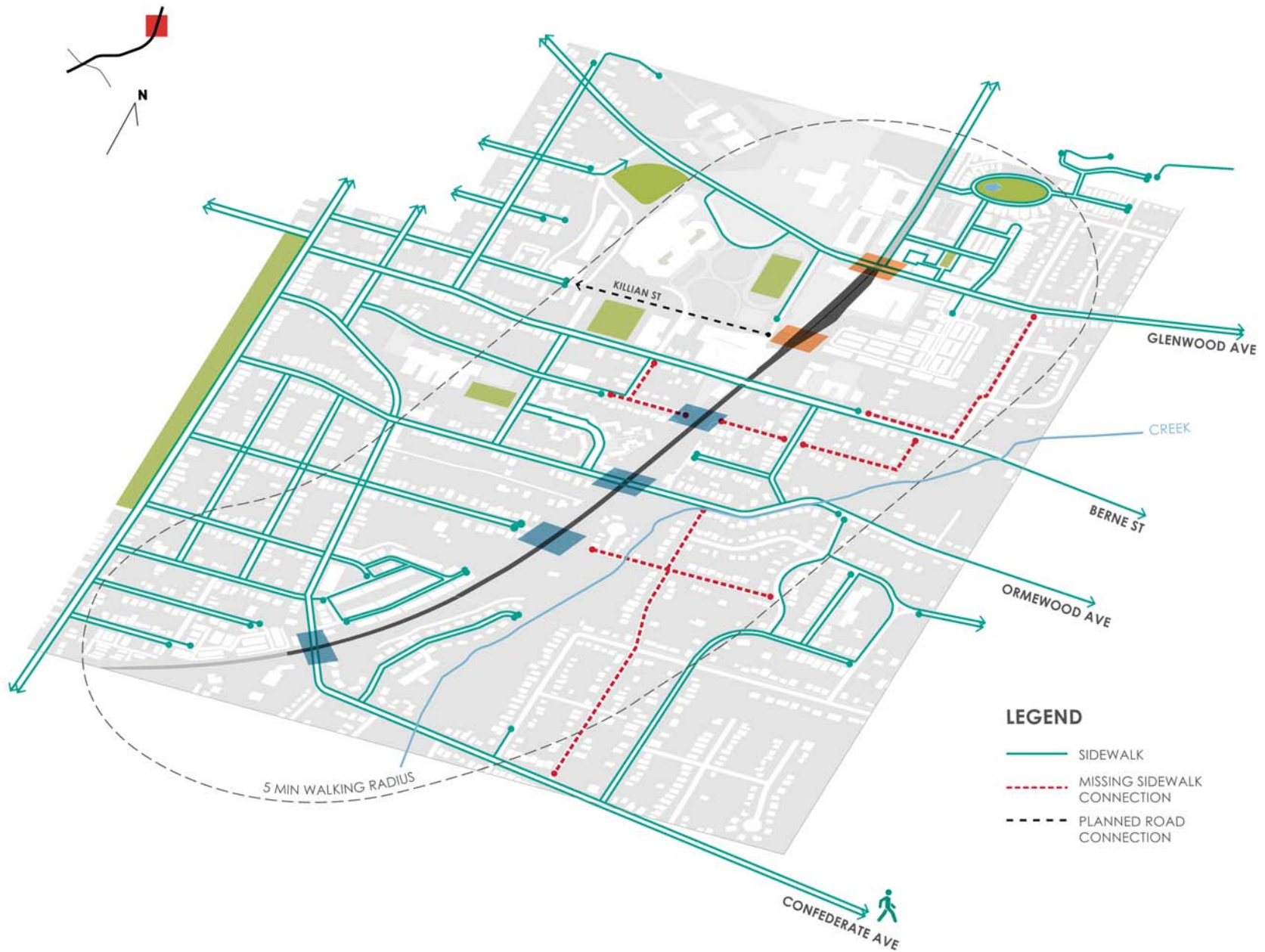
- Includes 4-mile trail between University Ave & Glenwood Ave
- Design to include lighting, retaining walls, vertical connections, storm drainage, signage/wayfinding, and bridges
- Federally Funded Project, following GDOT Design Process
- Design to be complete in 18-24 months followed by construction

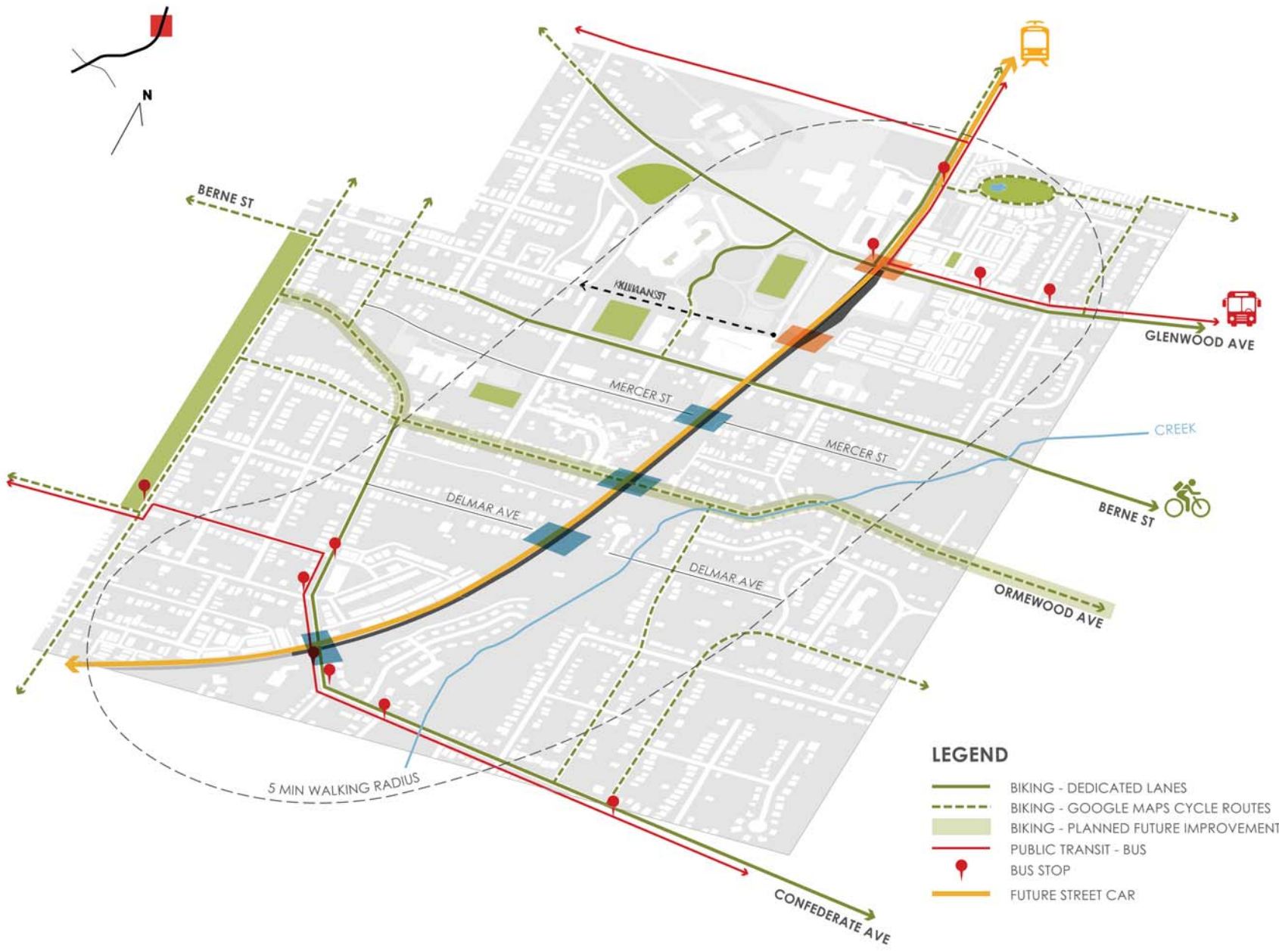


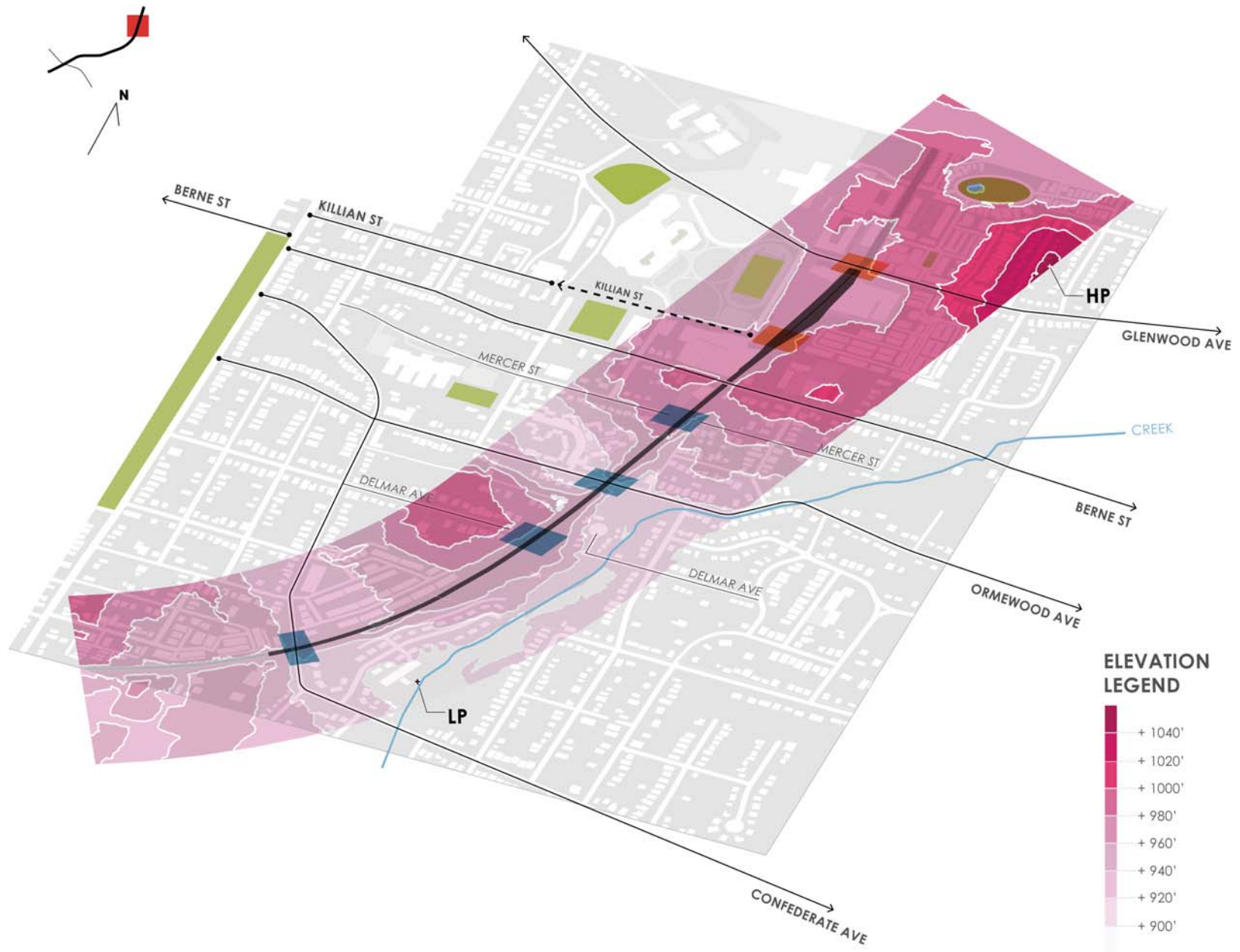


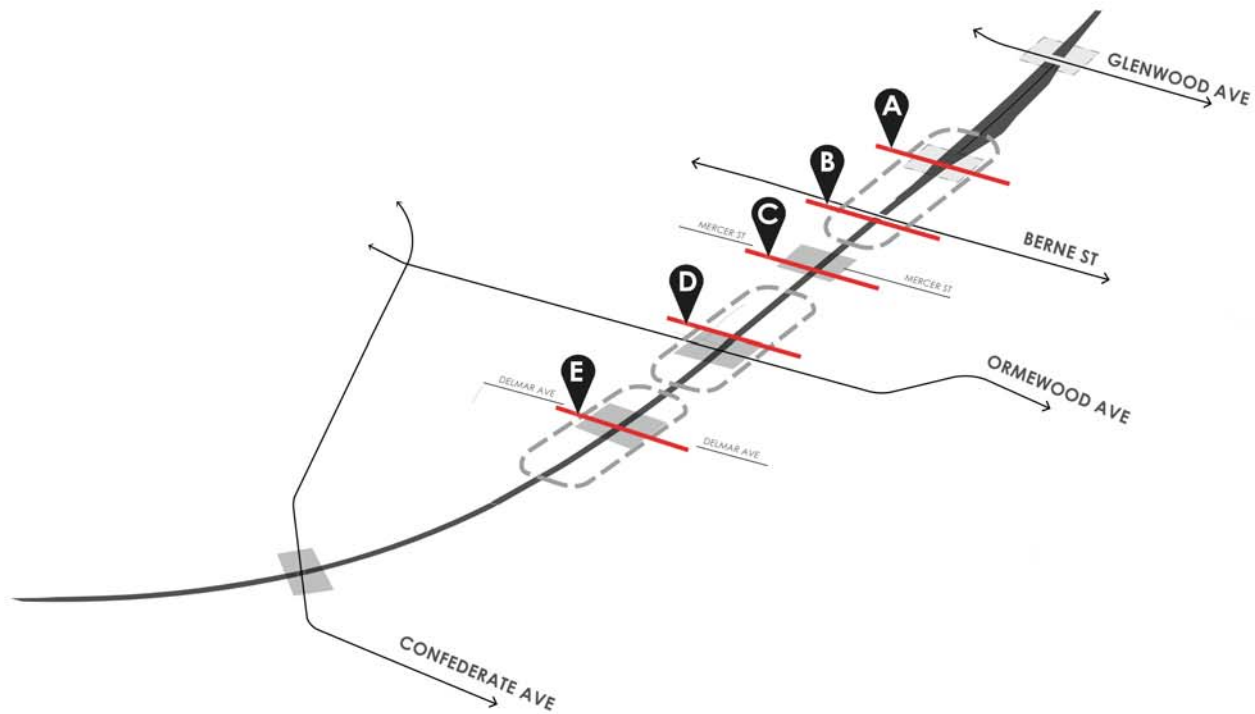
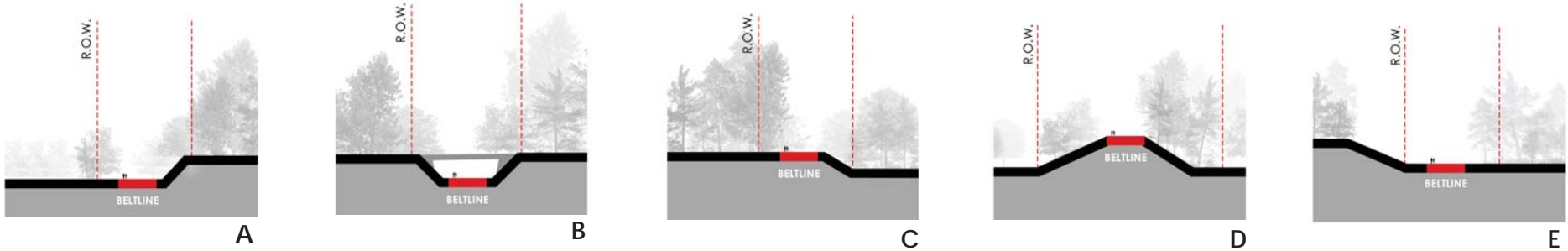




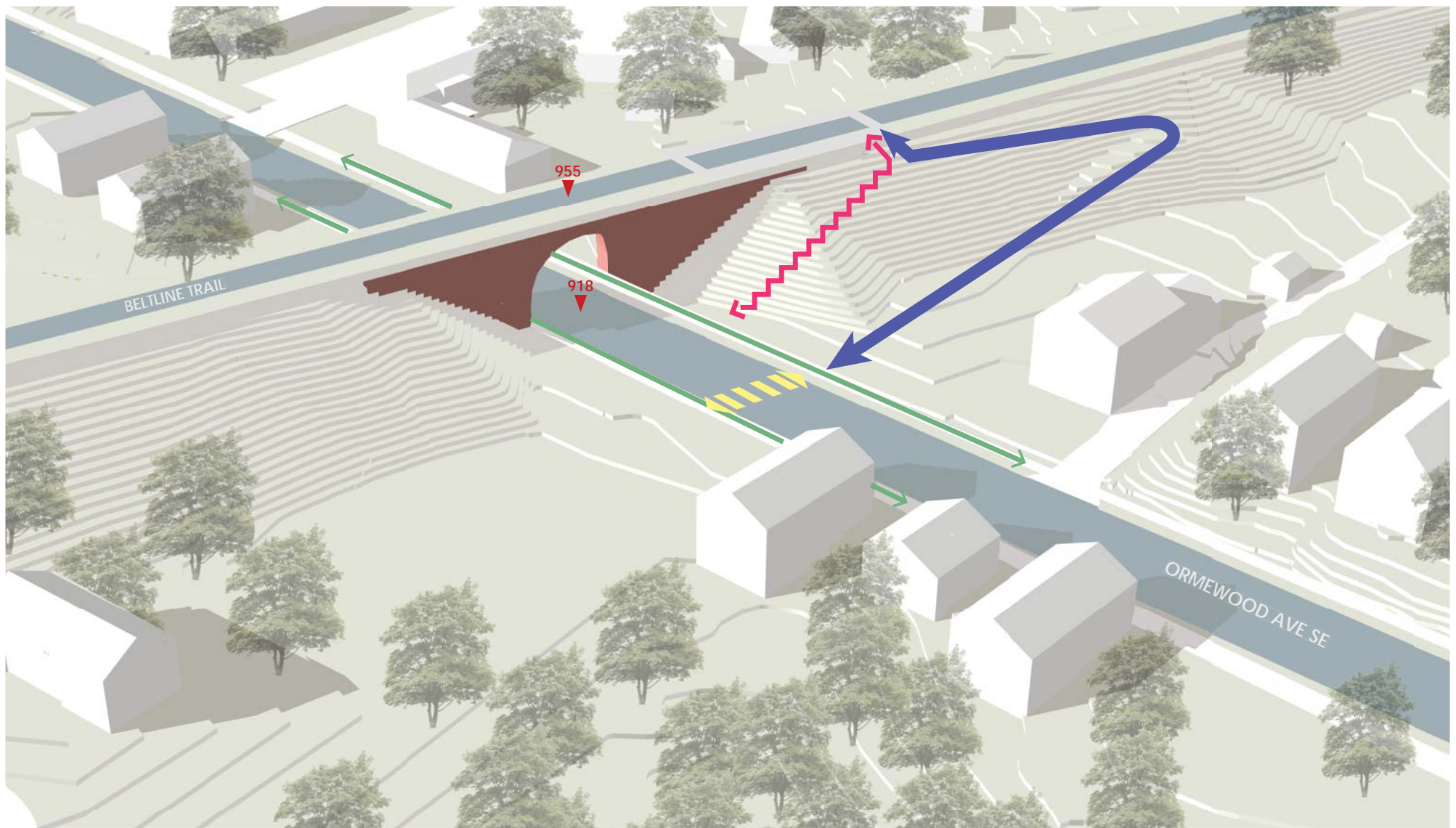








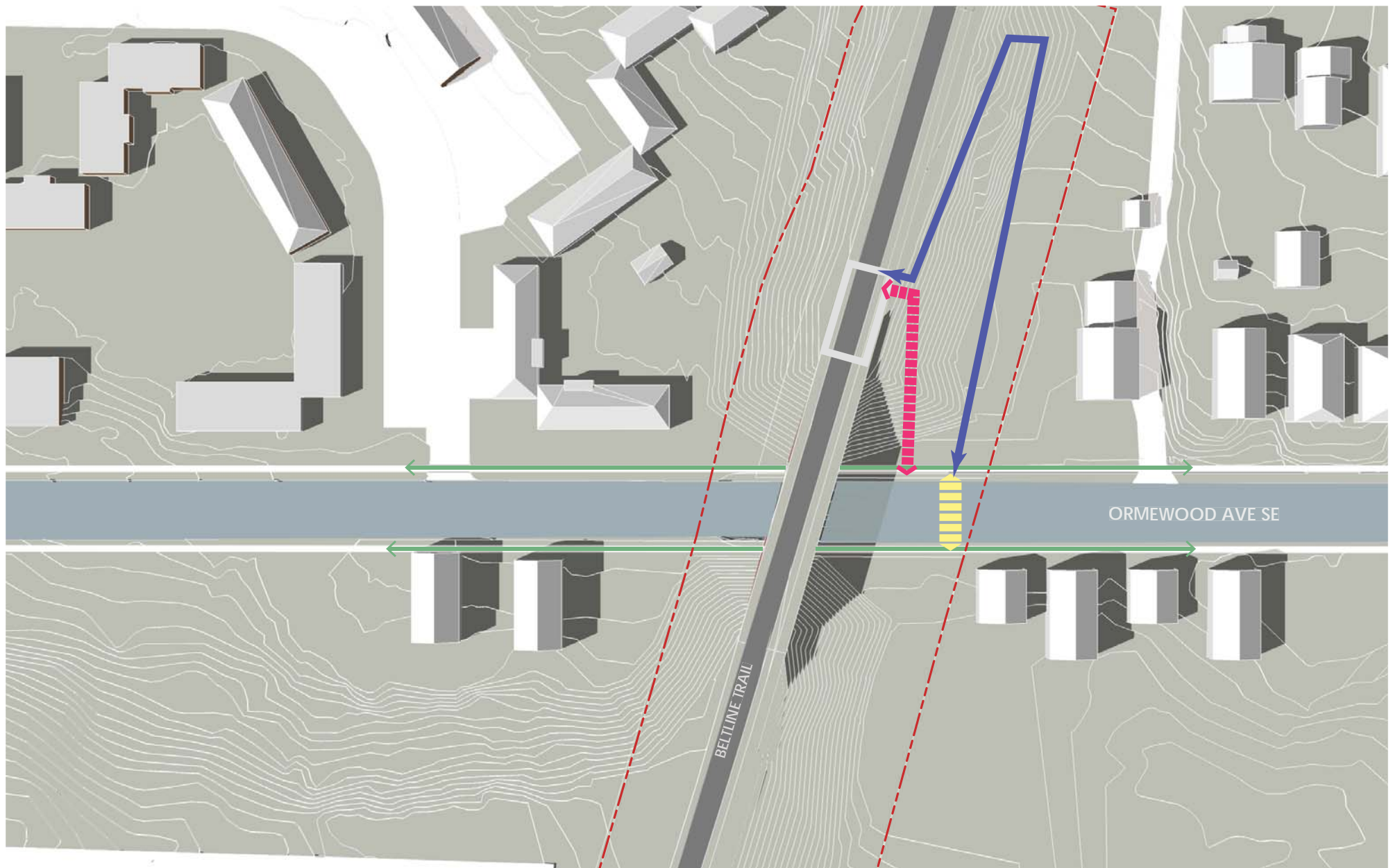









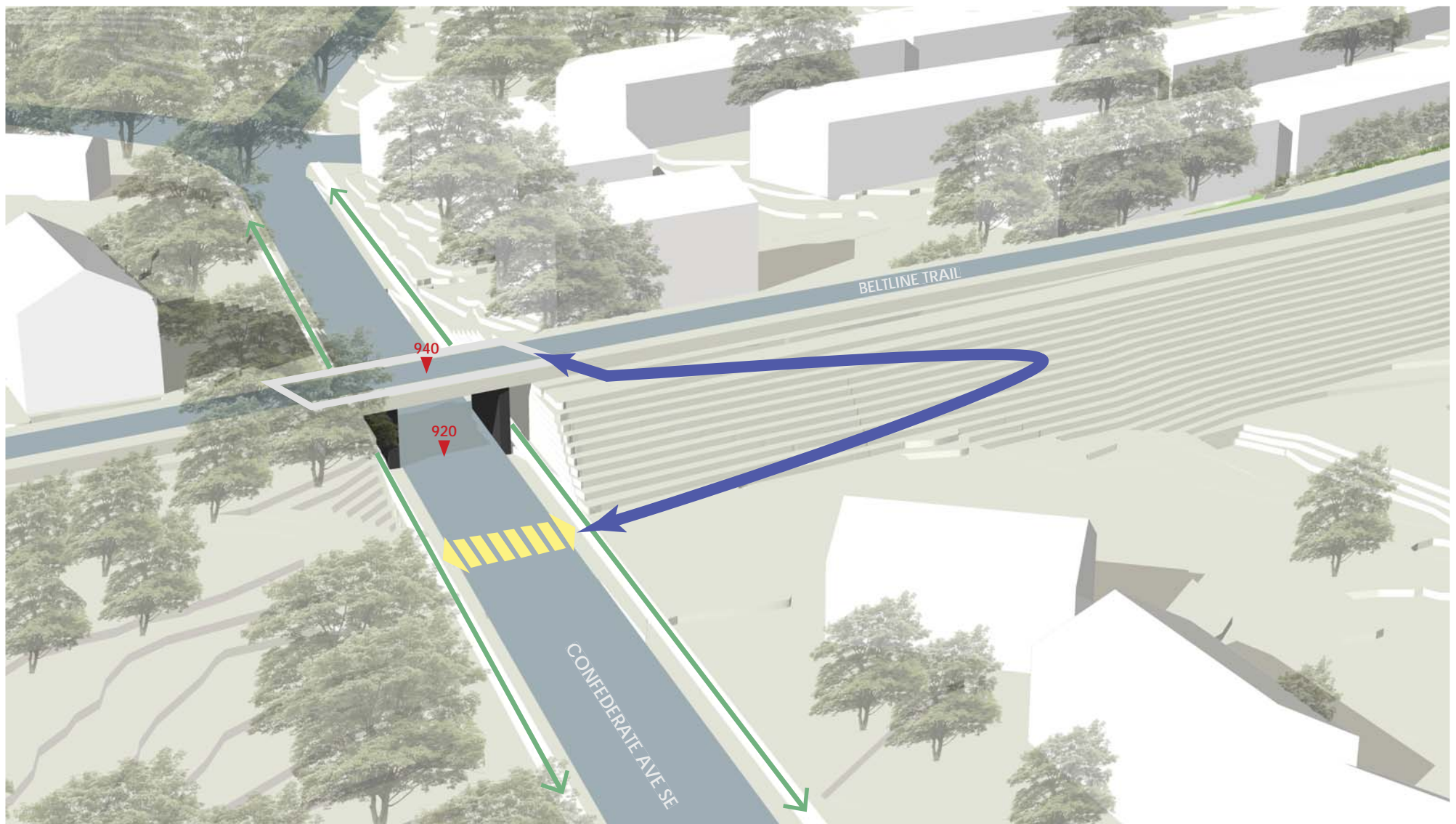




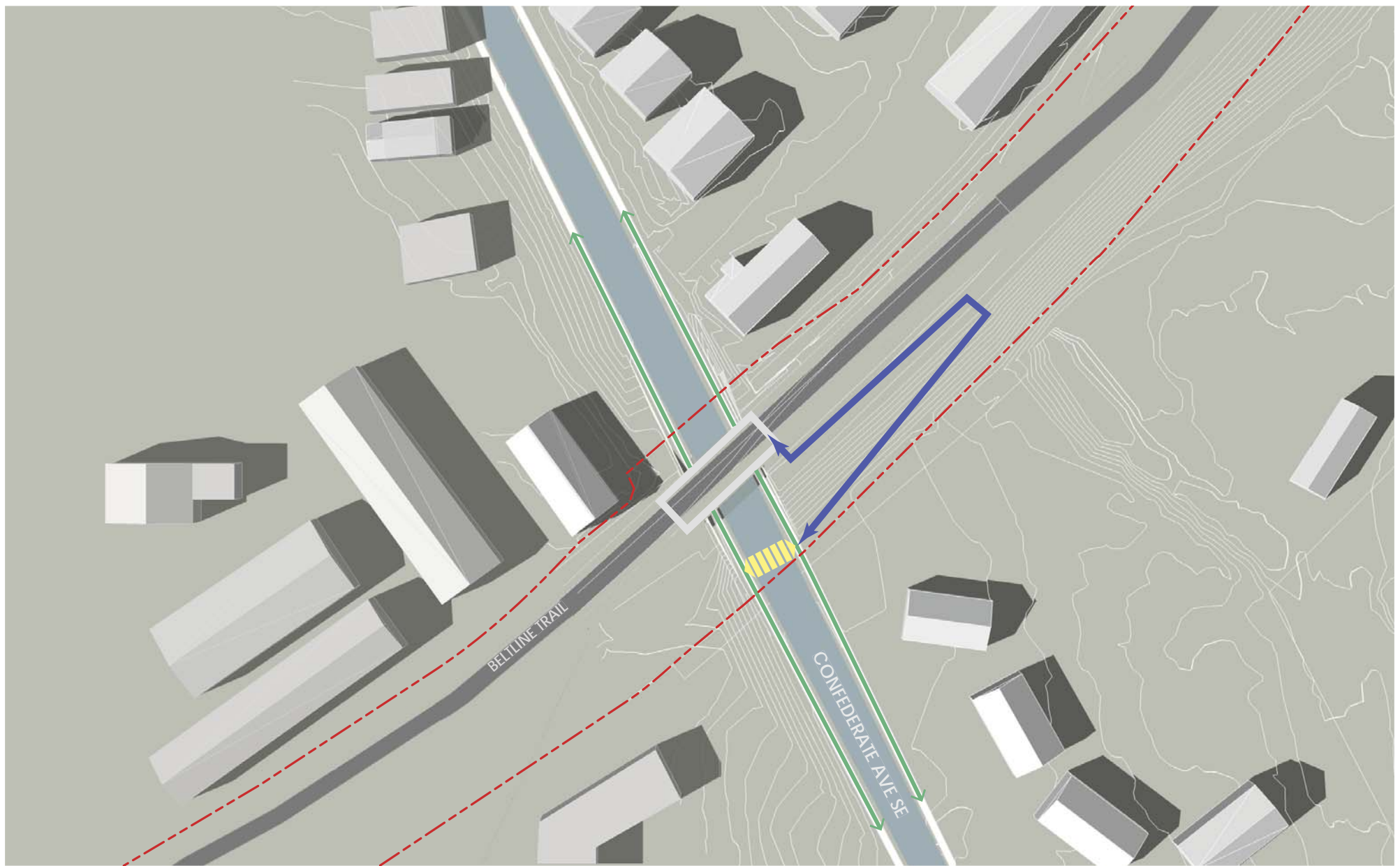
-  STREET LEVEL SIDEWALK
-  STAIR ACCESS
-  ACCESSIBLE RAMP ACCESS
-  MID-BLOCK CROSSING







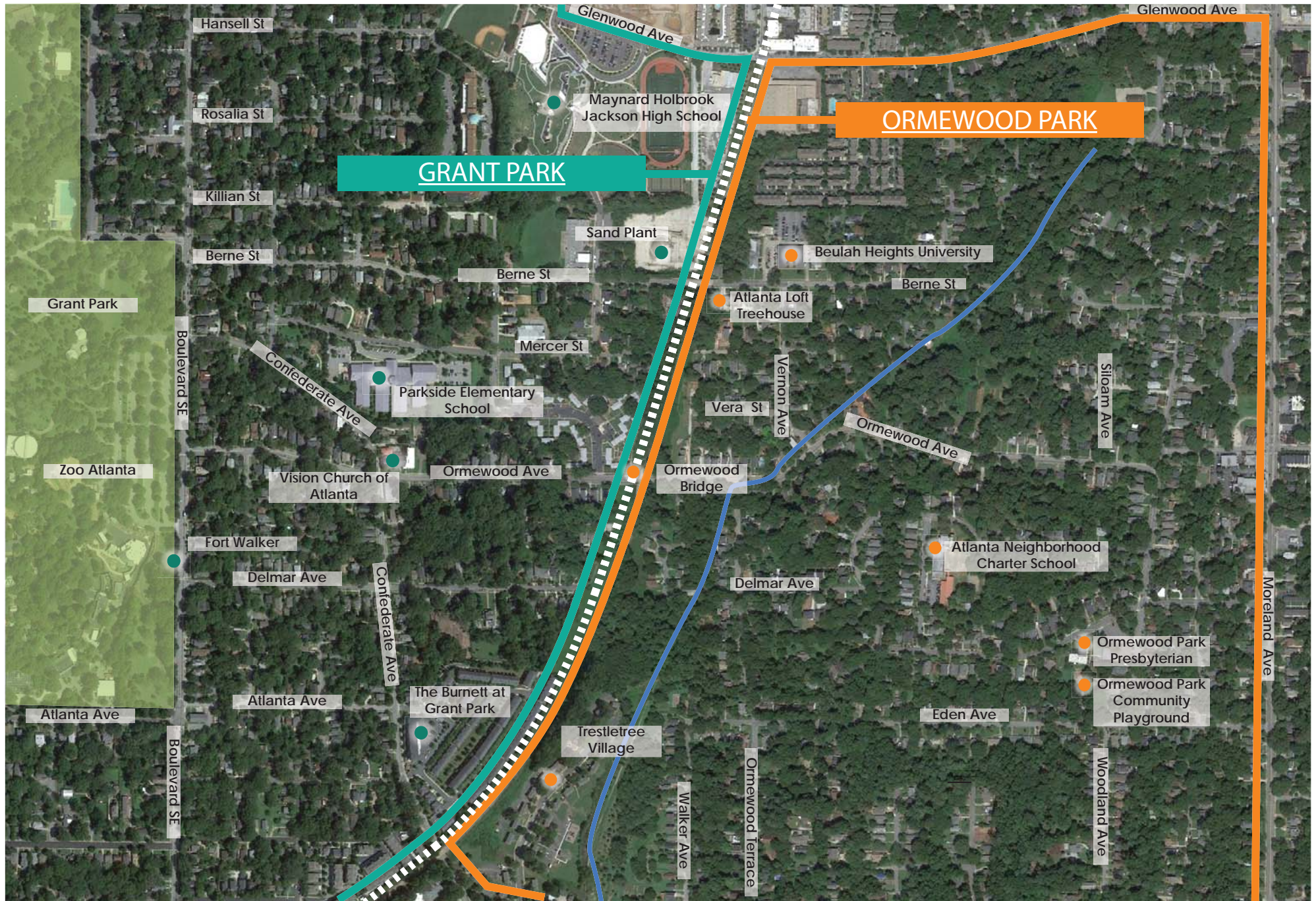
-  STREET LEVEL SIDEWALK
-  STAIR ACCESS
-  ACCESSIBLE RAMP ACCESS
-  MID-BLOCK CROSSING
-  RIGHT OF WAY

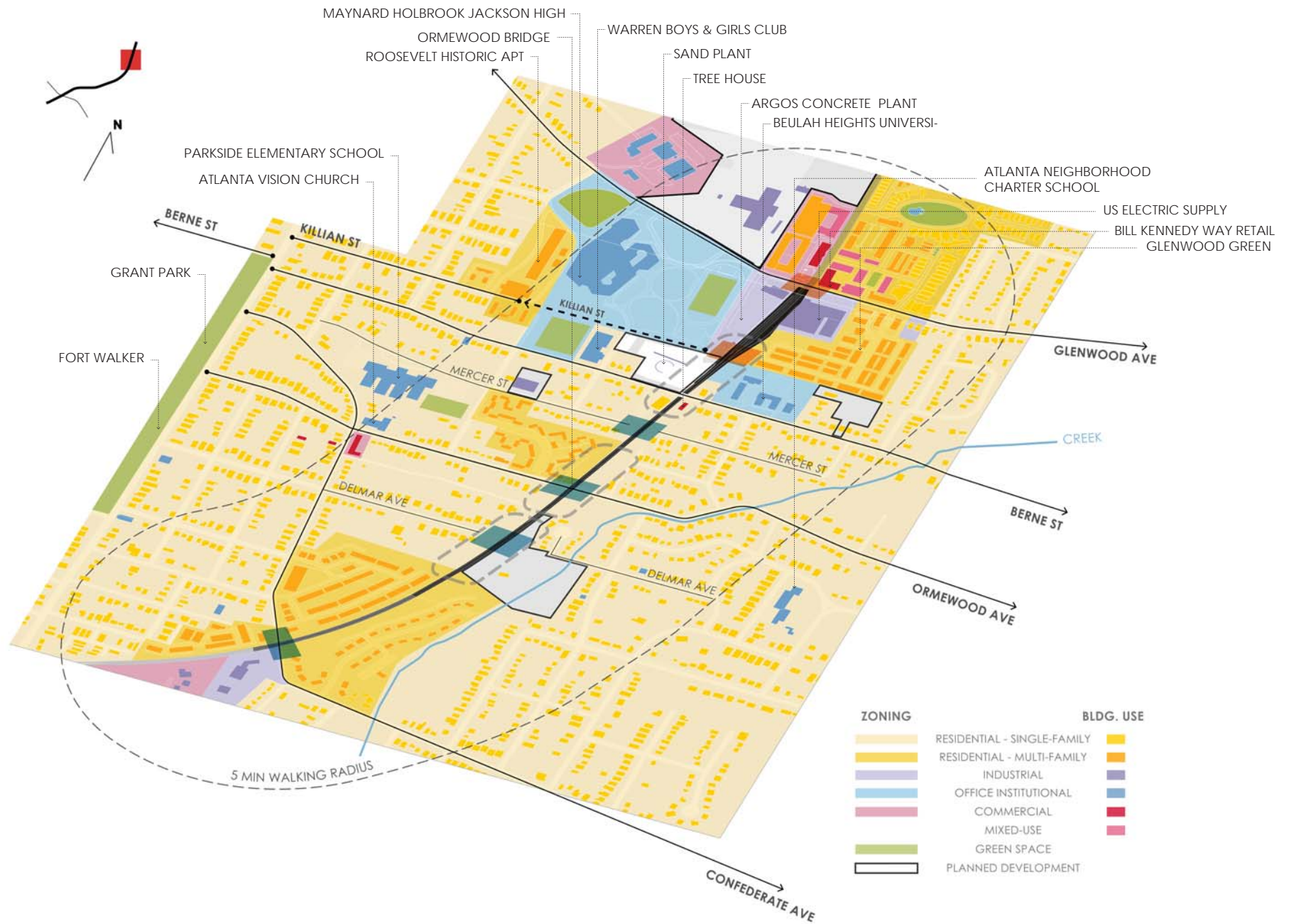


- ↔ STREET LEVEL SIDEWALK
- ↔ ACCESSIBLE RAMP ACCESS
- MID-BLOCK CROSSING



-  STREET LEVEL SIDEWALK
-  ACCESSIBLE RAMP ACCESS
-  MID-BLOCK CROSSING
-  RIGHT OF WAY



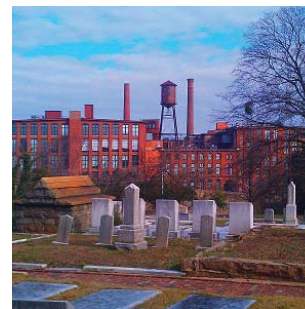




Grant Park



Grant Park Commercial District



Oakland Cemetery



Sand plant



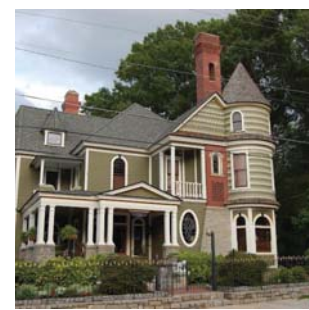
Maynard Holbrook Jackson High School



Fort Walker



Parkside Elementary School



Victorian-style homes



Neighborhood Commercial Hub



Glenwood Park Dr



Multi-Family Street



Neighborhood Park in Glenwood



Glenwood Green Apartment



Atlanta Loft Treehouse



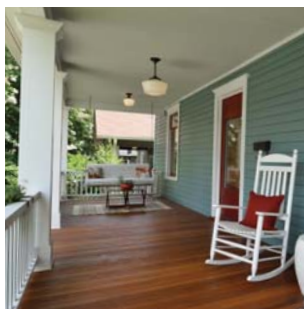
Ormeowood Park Presbyterian Church



Modernist Architecture



Ormeowood Avenue Bridge



Ormeowood Avenue Front Porches



Ormeowood Park Community Playground



Atlanta Neighborhood Charter School

NODE

A place of special **HISTORICAL**, **CULTURAL**, or **NATURAL SIGNIFICANCE**

A **FOCAL POINT** for nearby communities or commerce - **A MEETING PLACE**

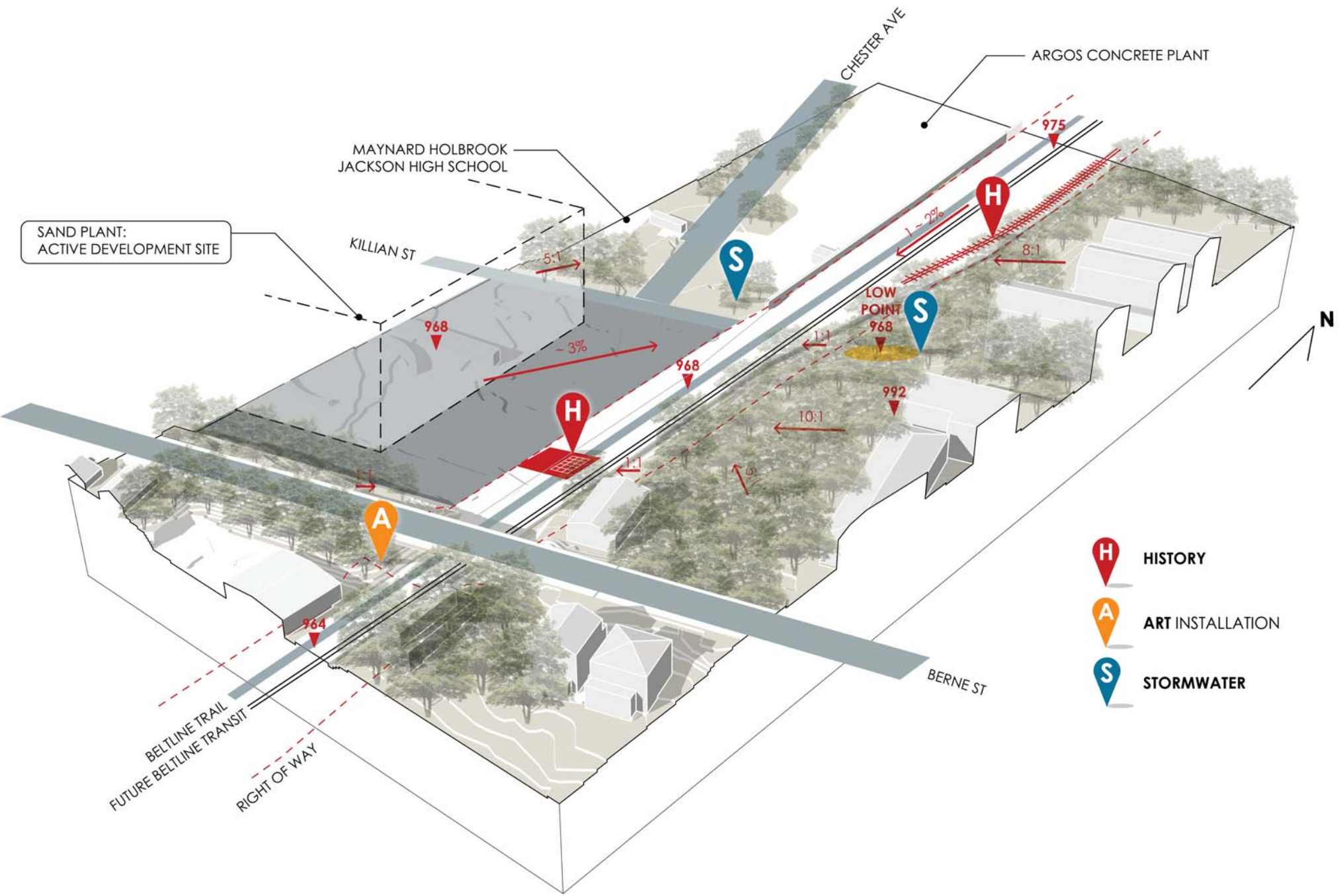
A place that offers **SPECIAL VIEWS**, **VISTAS**, or **EXPERIENCES**

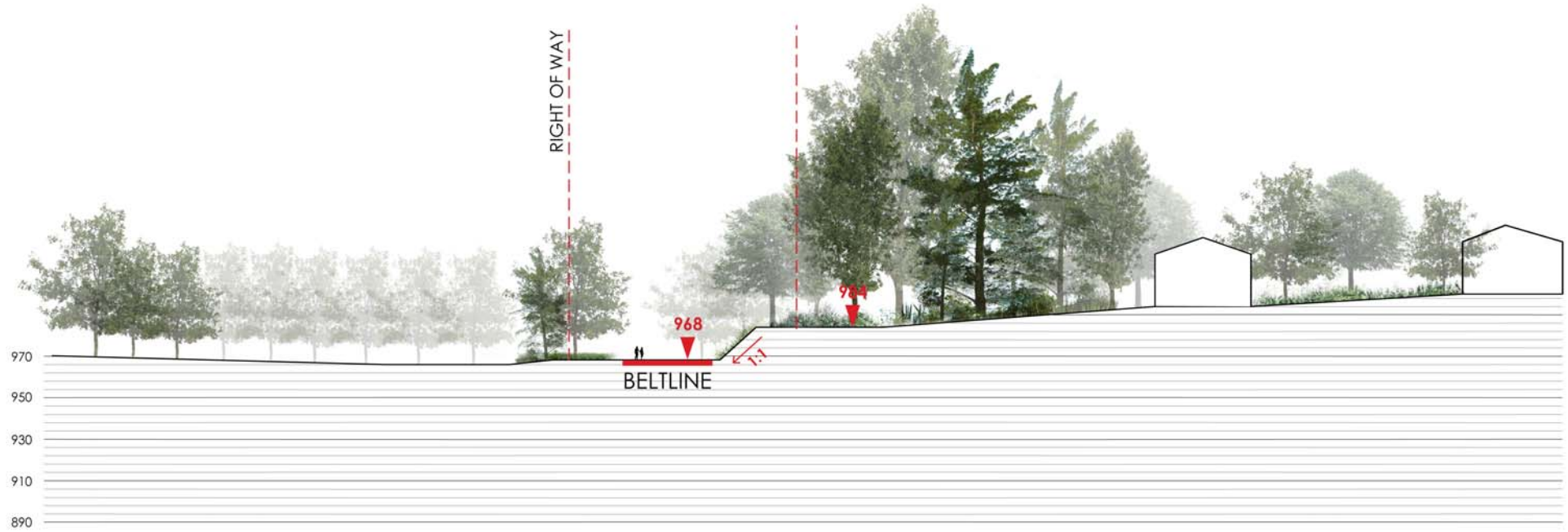
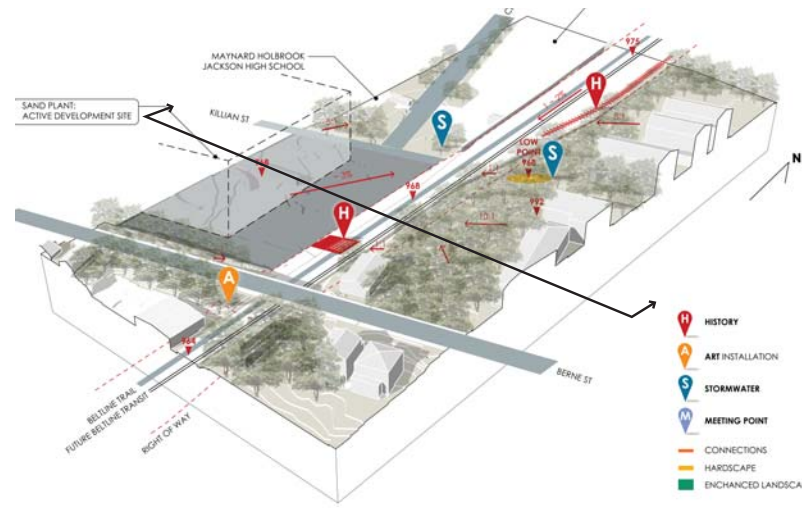
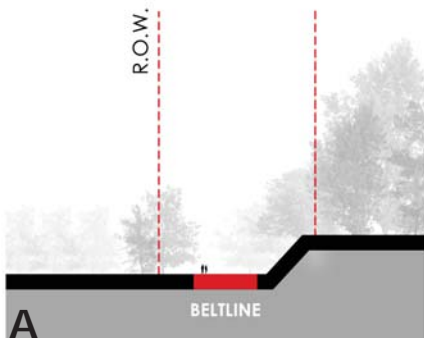
A place that contains **SUFFICIENT LAND AREA** for the development of the above

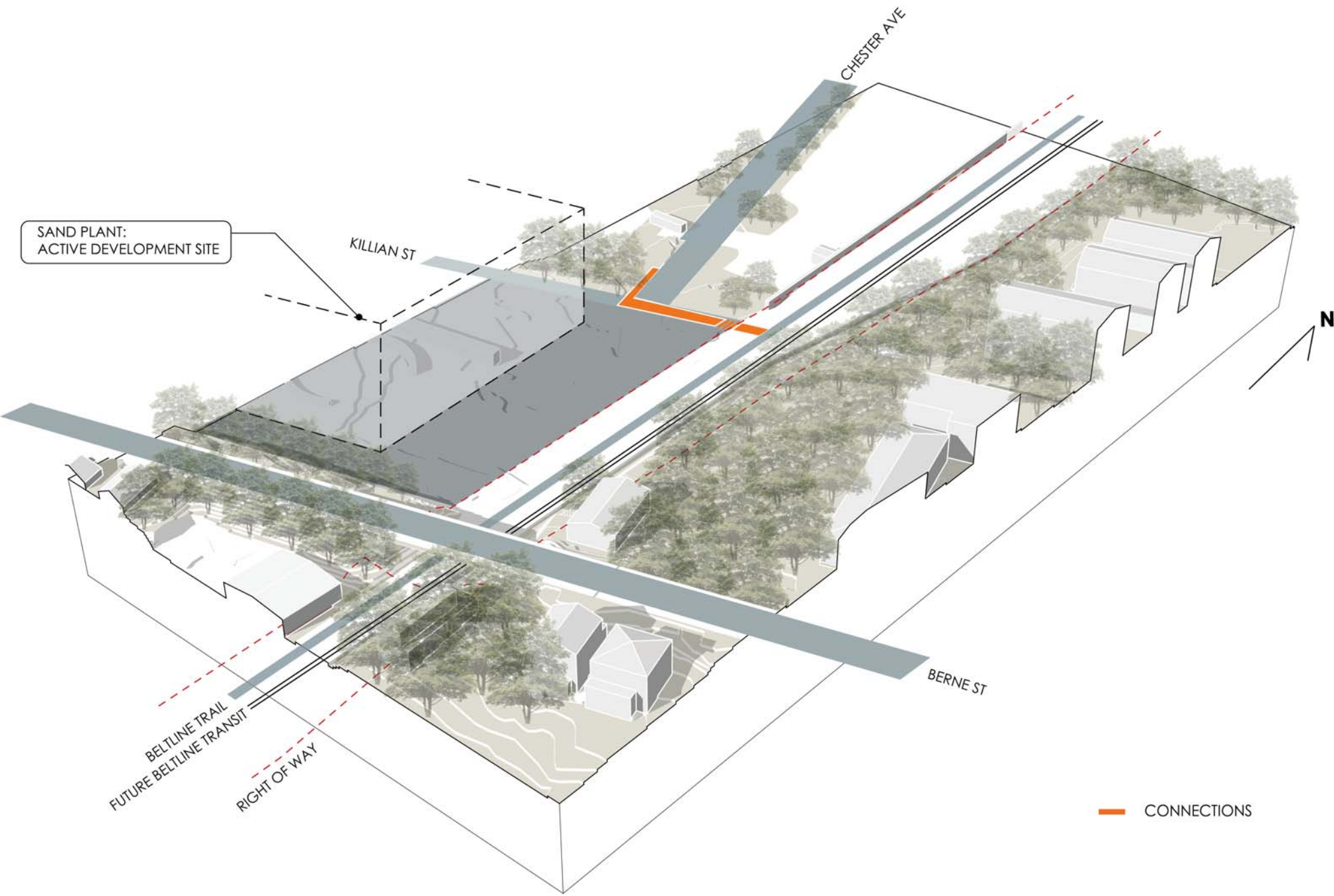




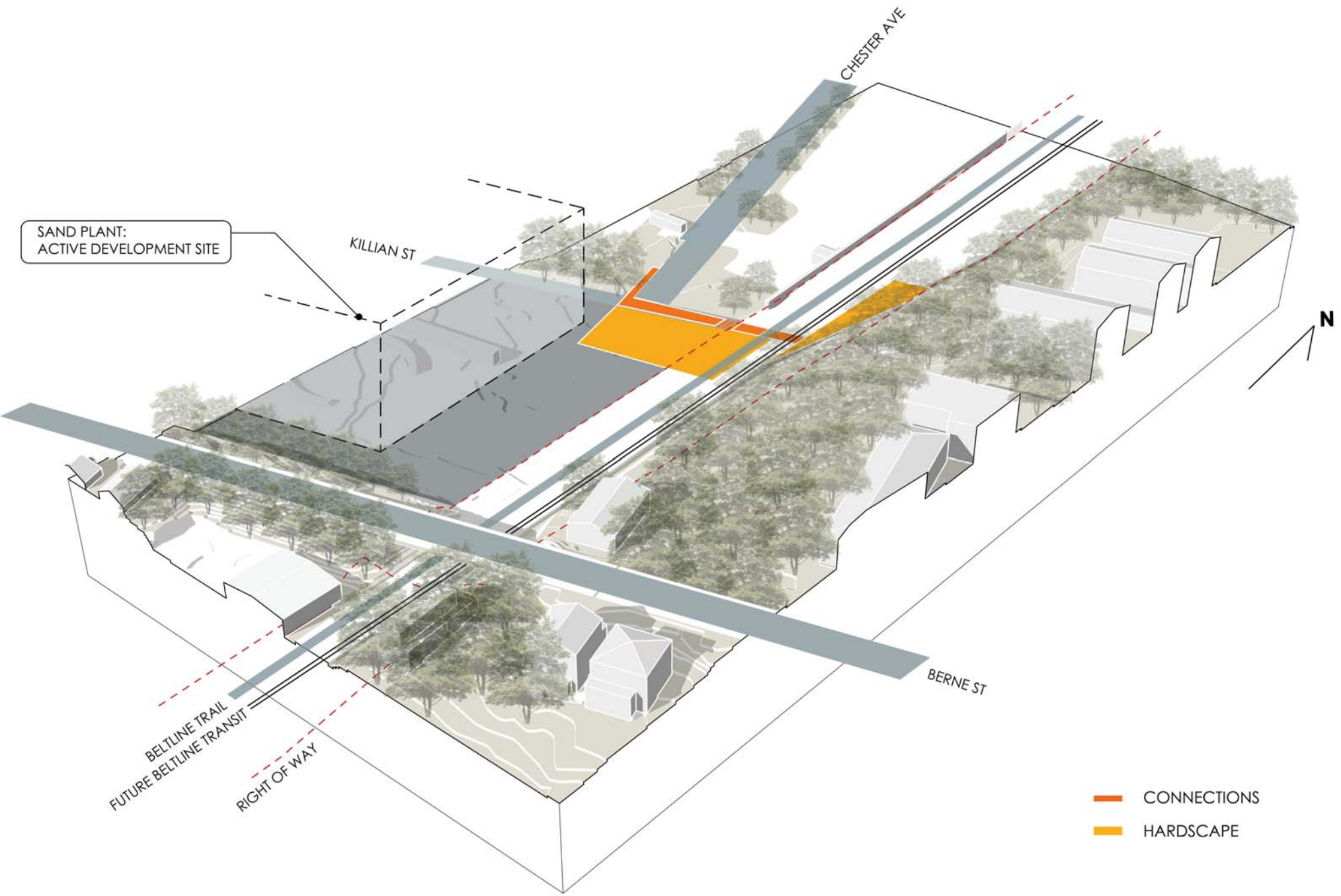


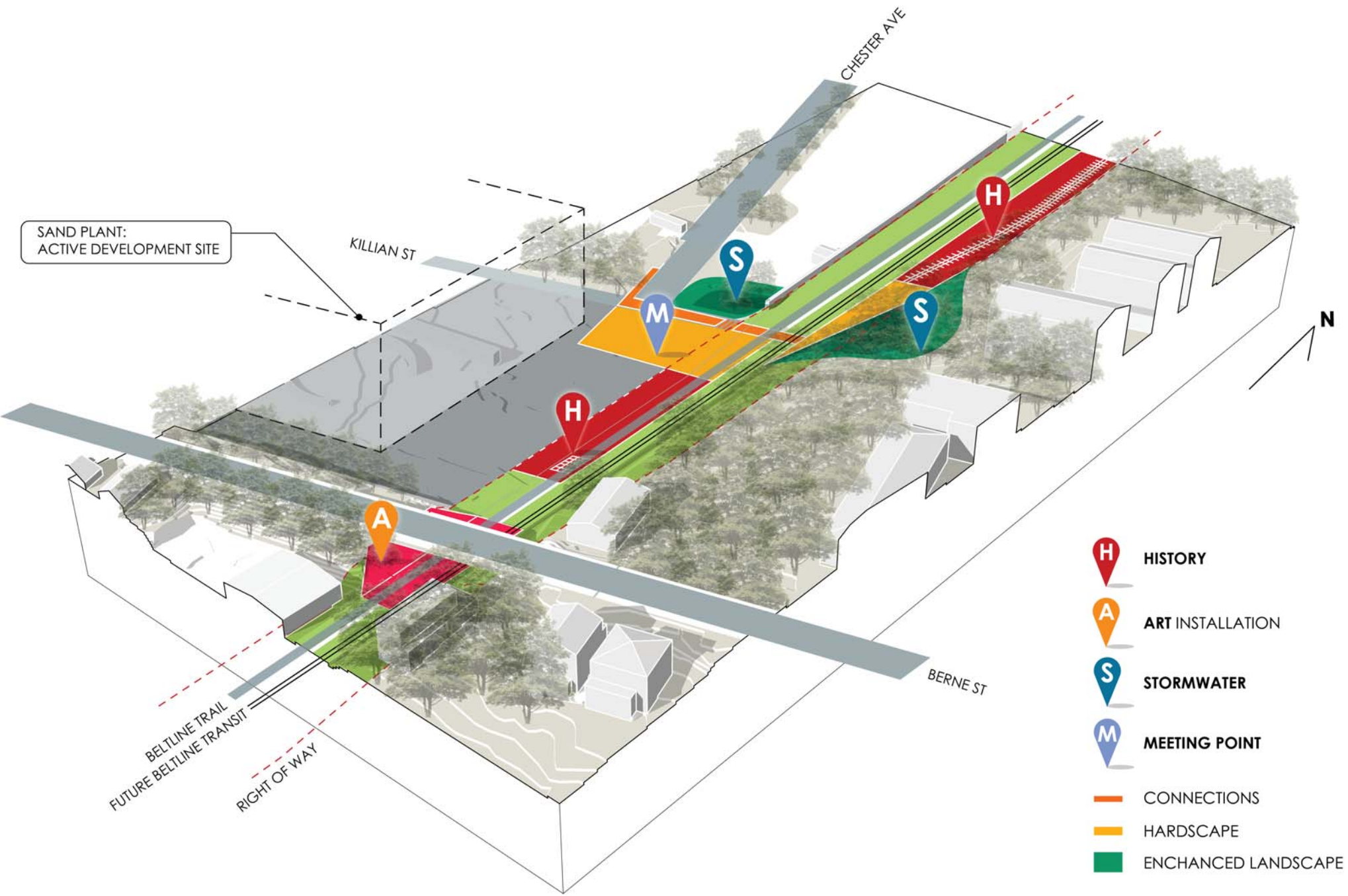




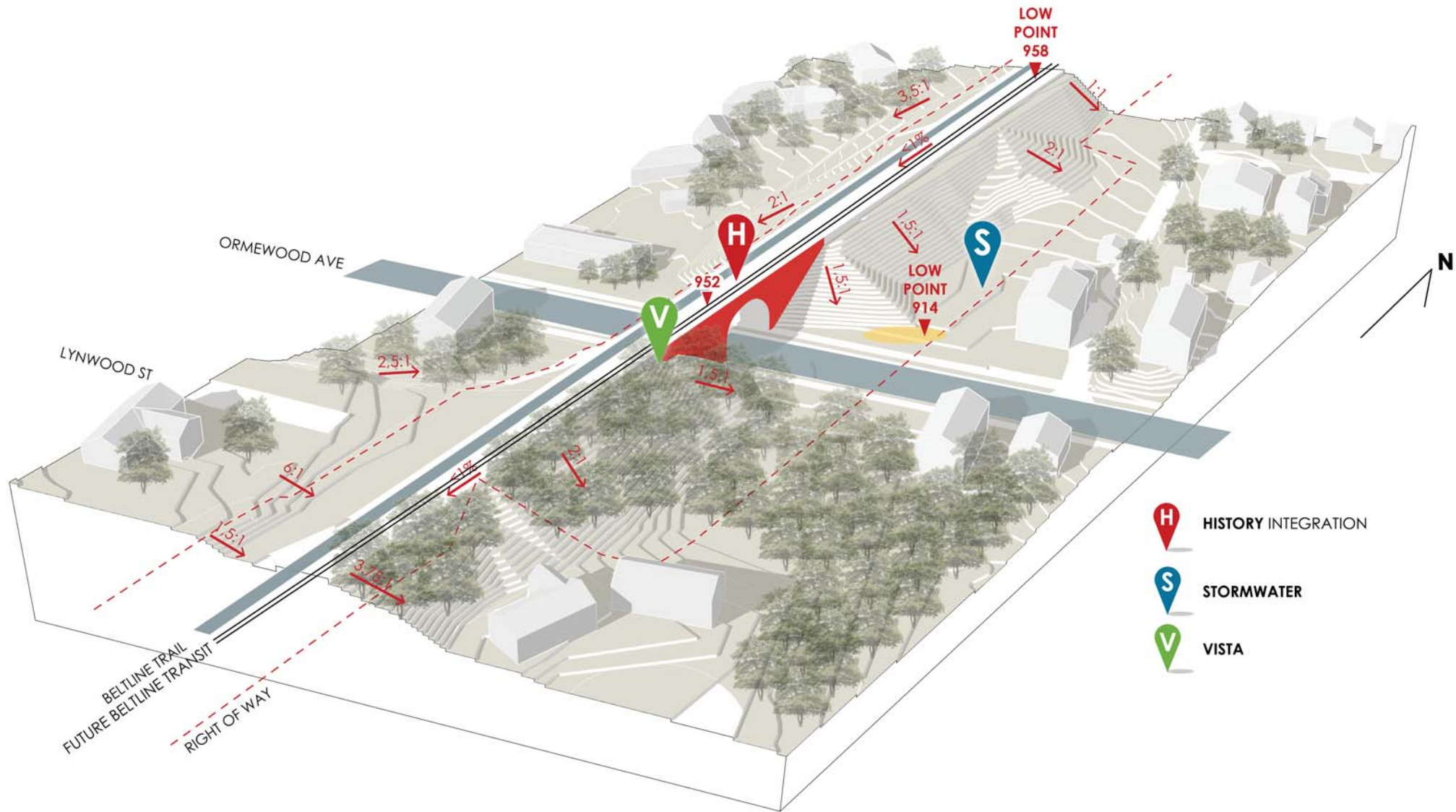


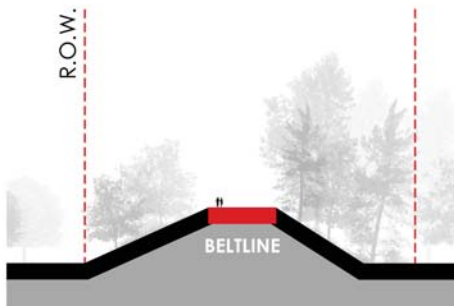
— CONNECTIONS



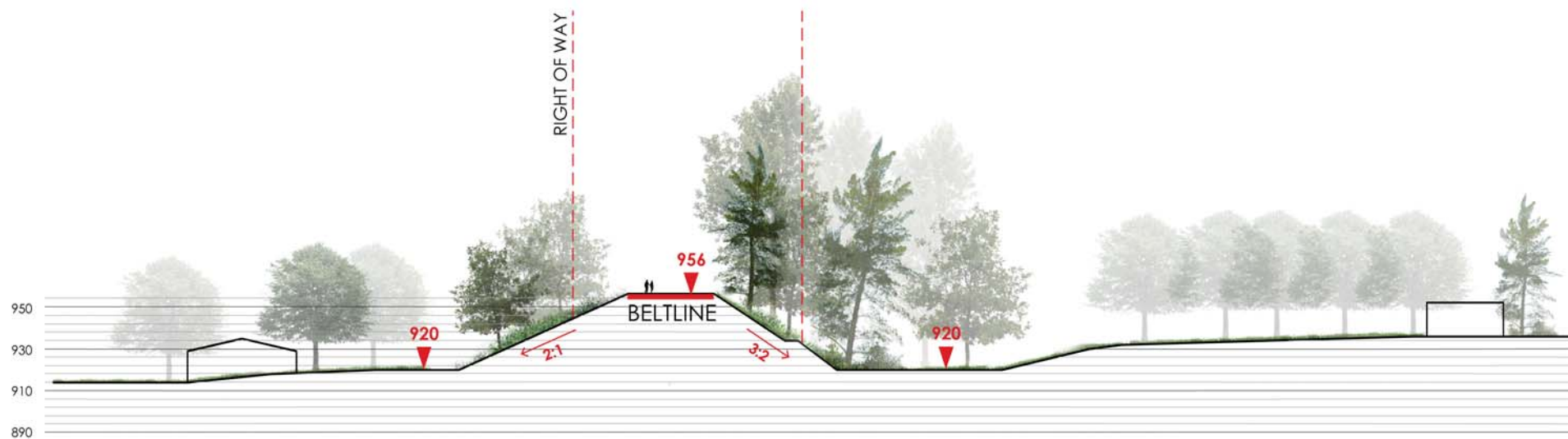
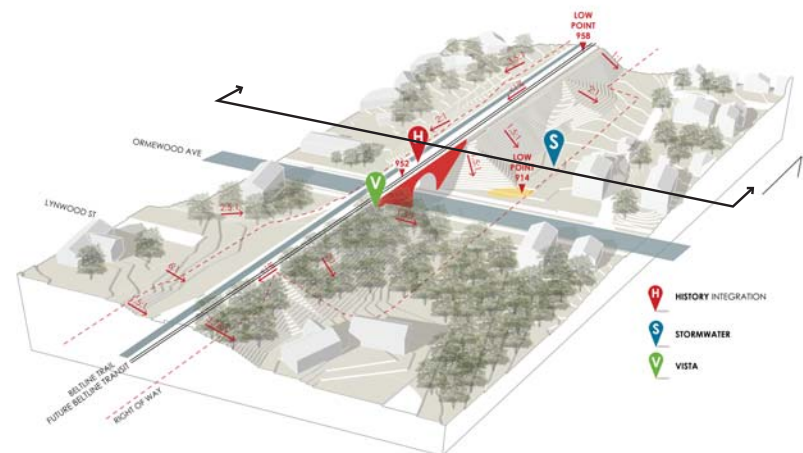


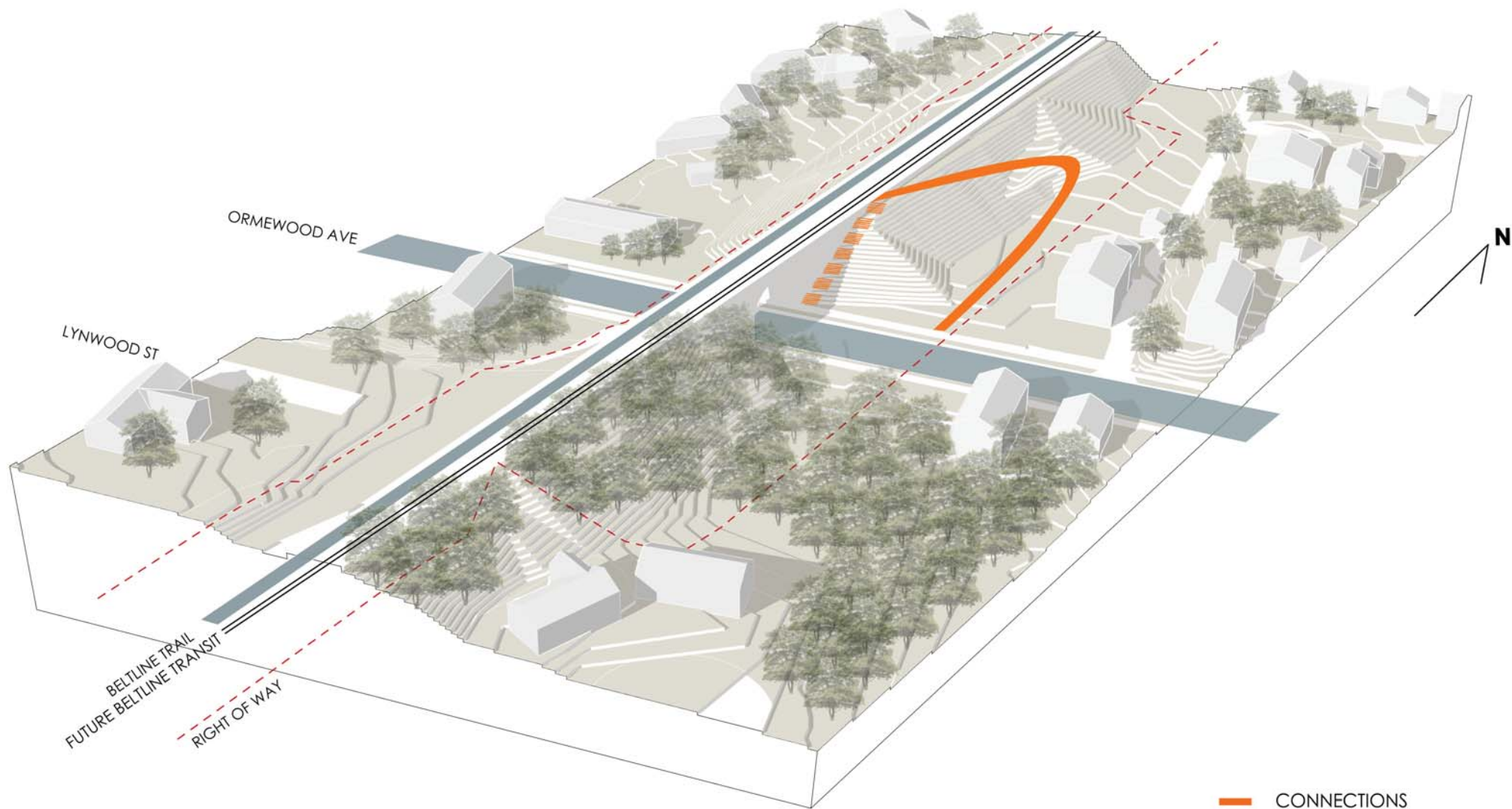


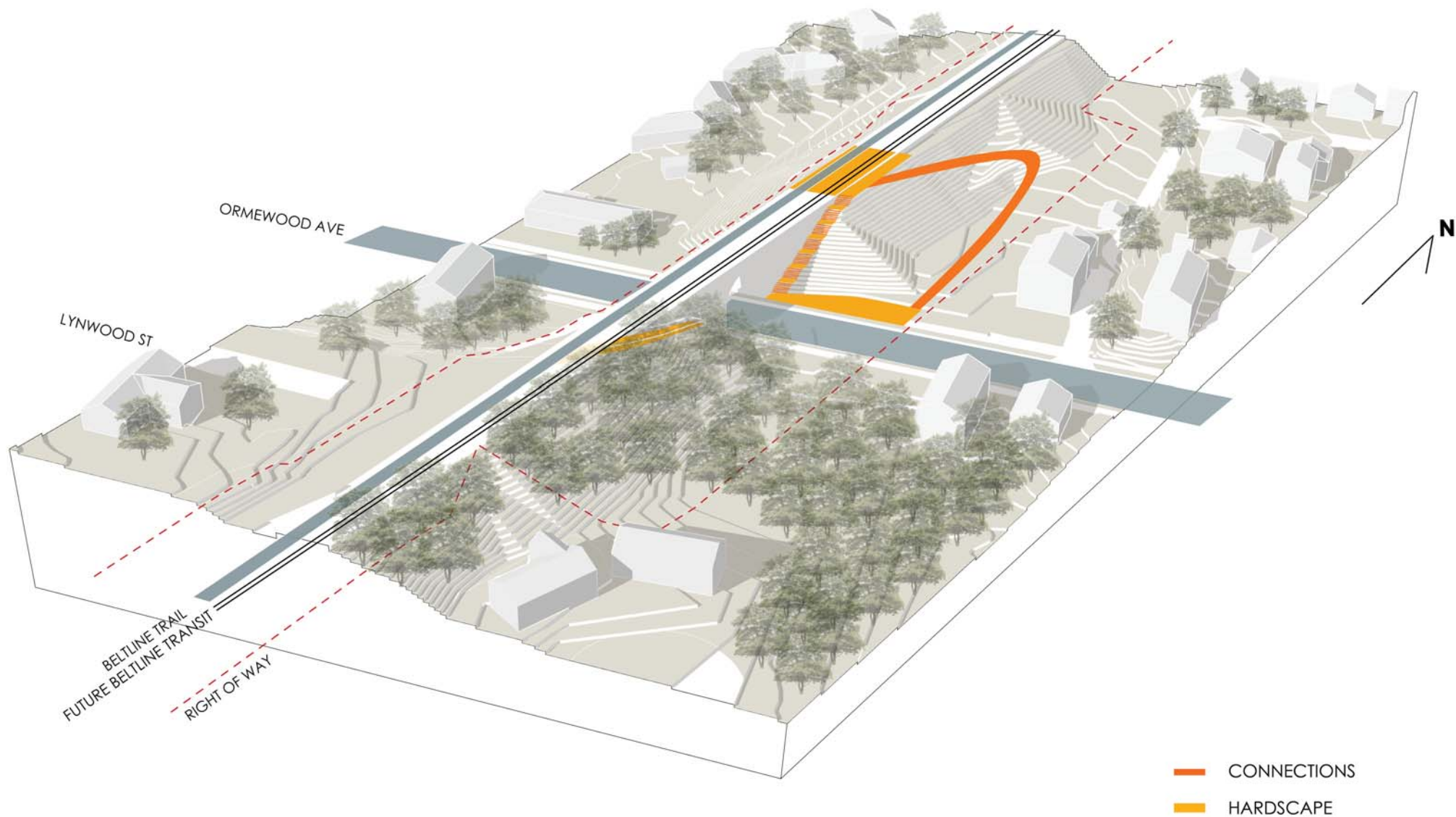




D

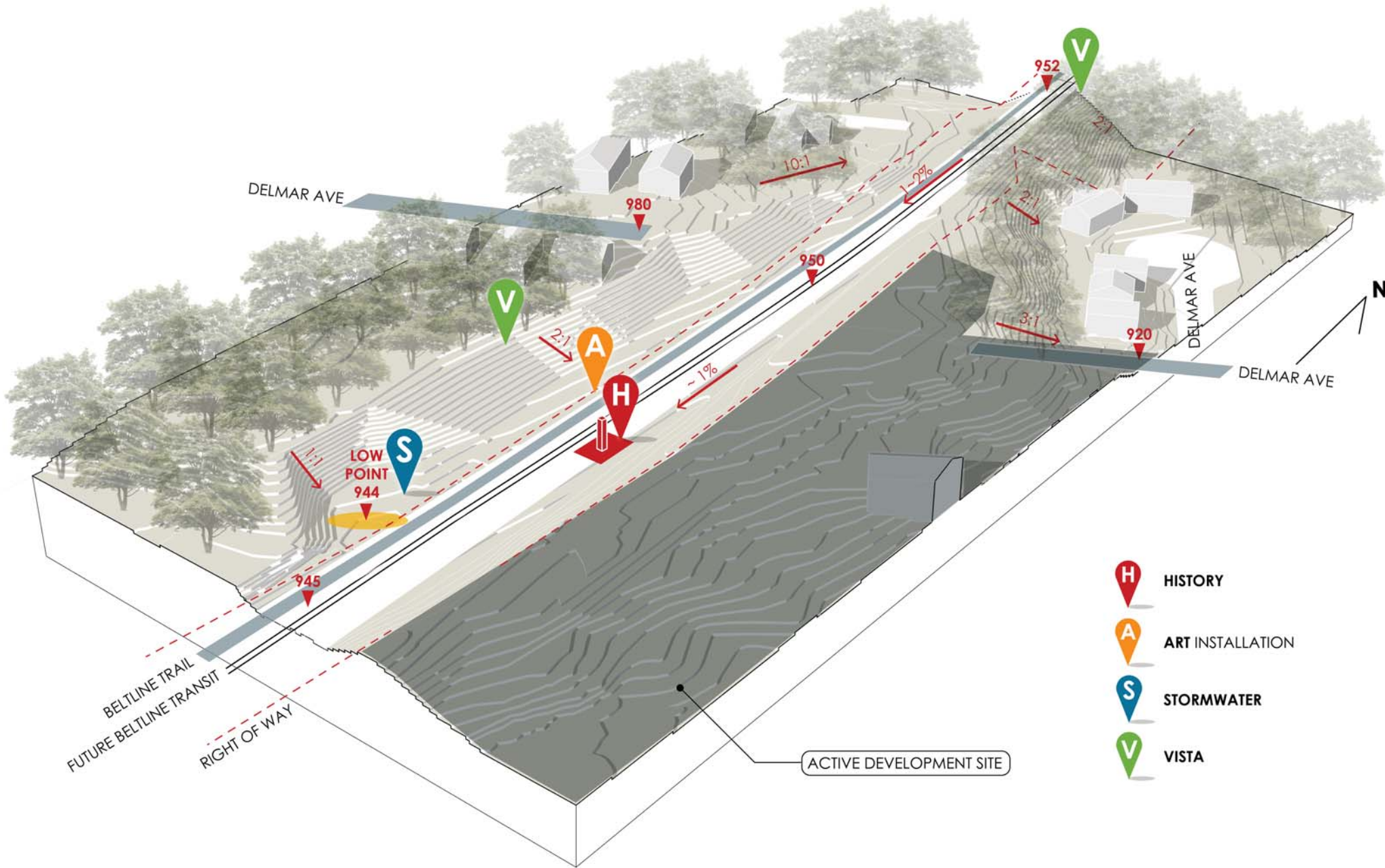




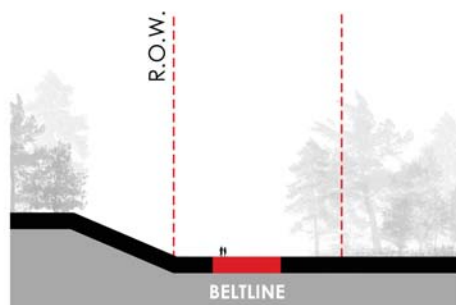




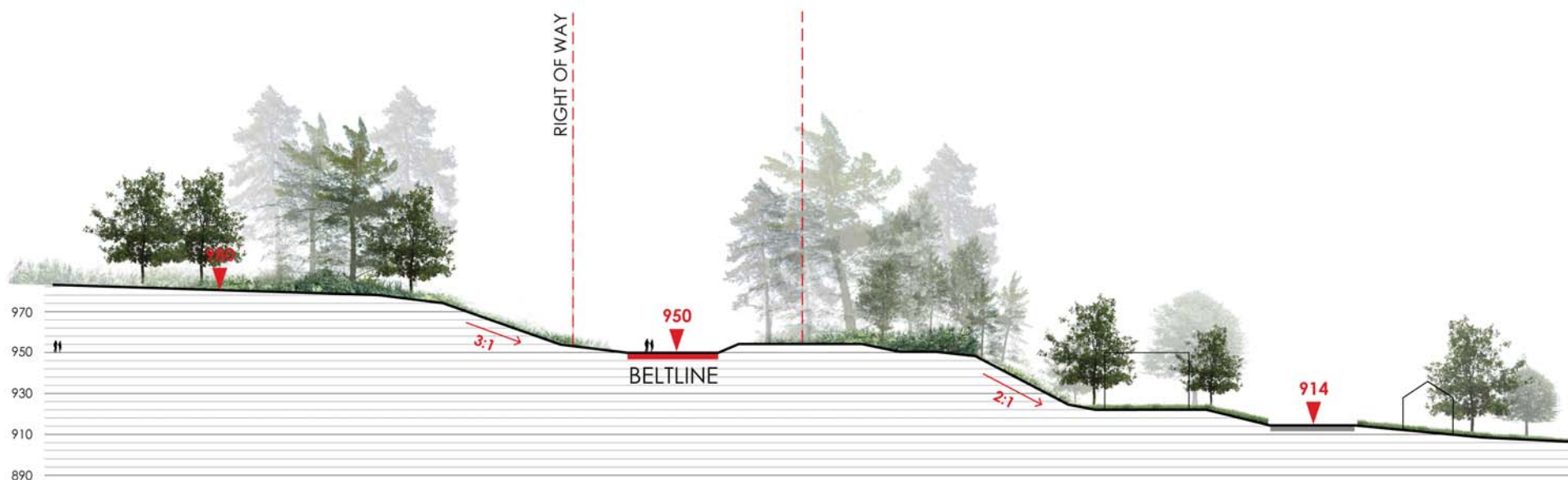
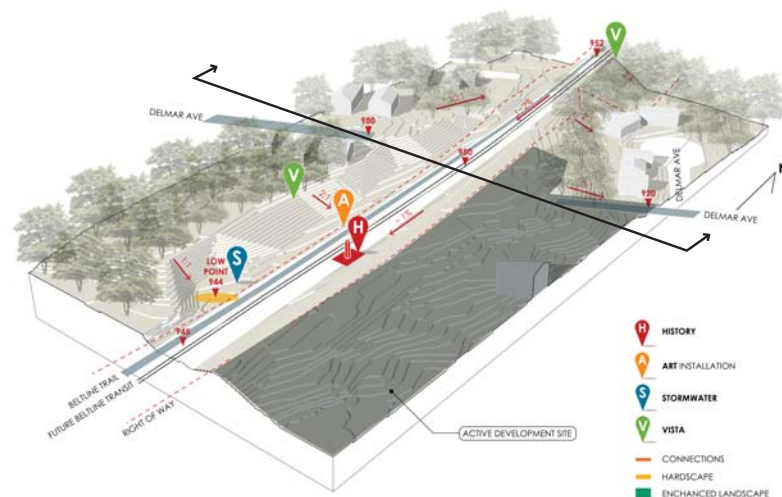


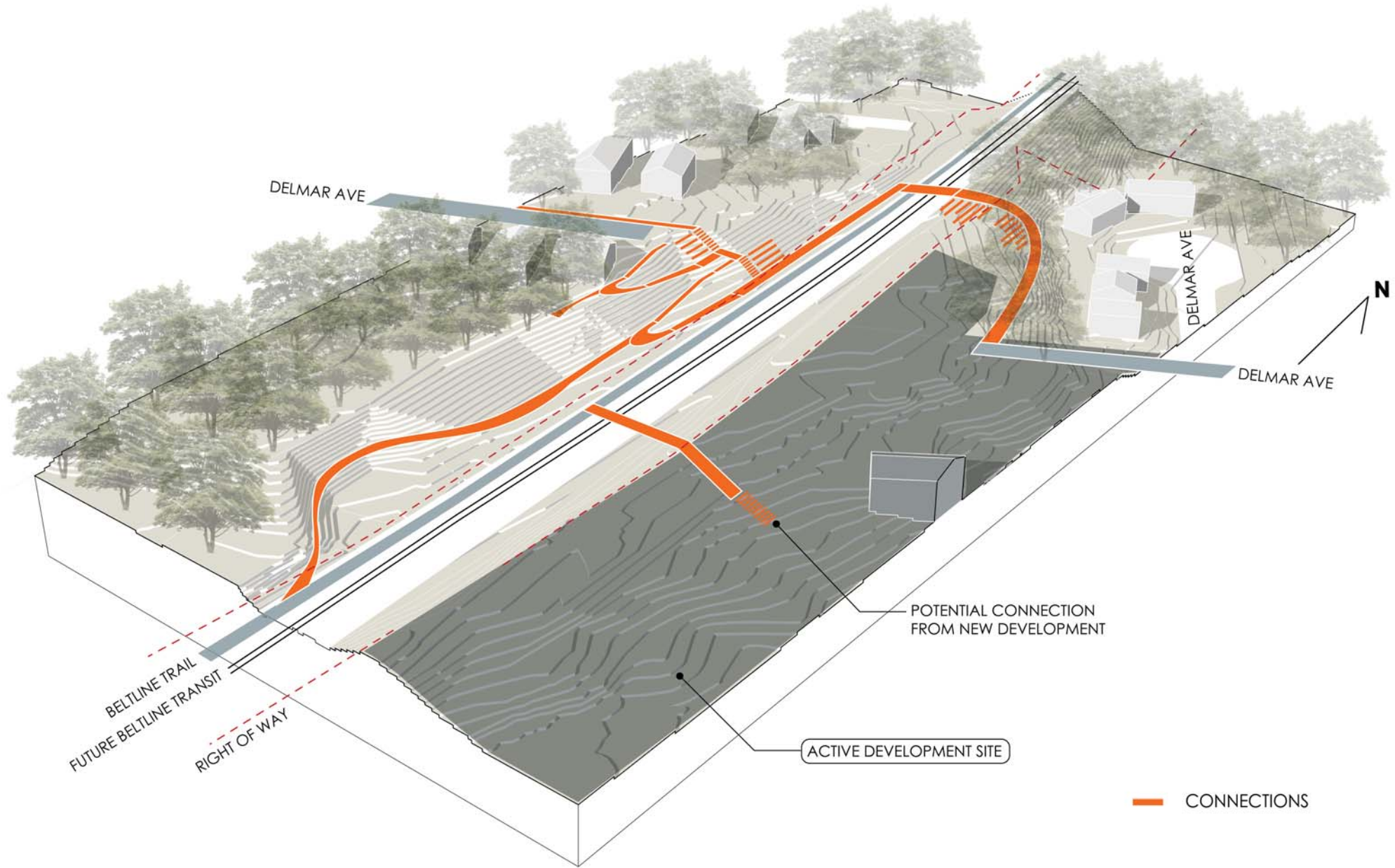


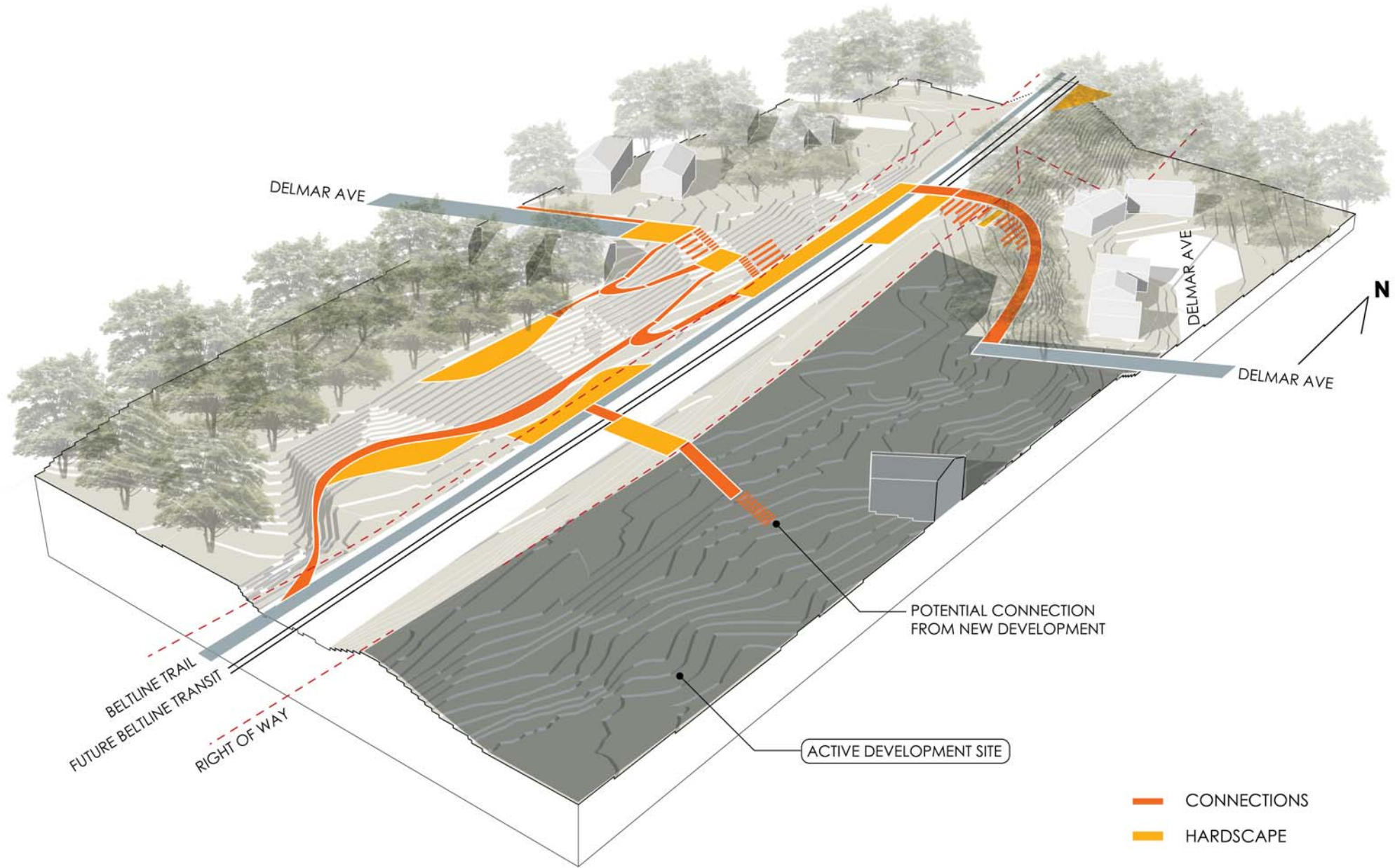
-  **HISTORY**
-  **ART INSTALLATION**
-  **STORMWATER**
-  **VISTA**

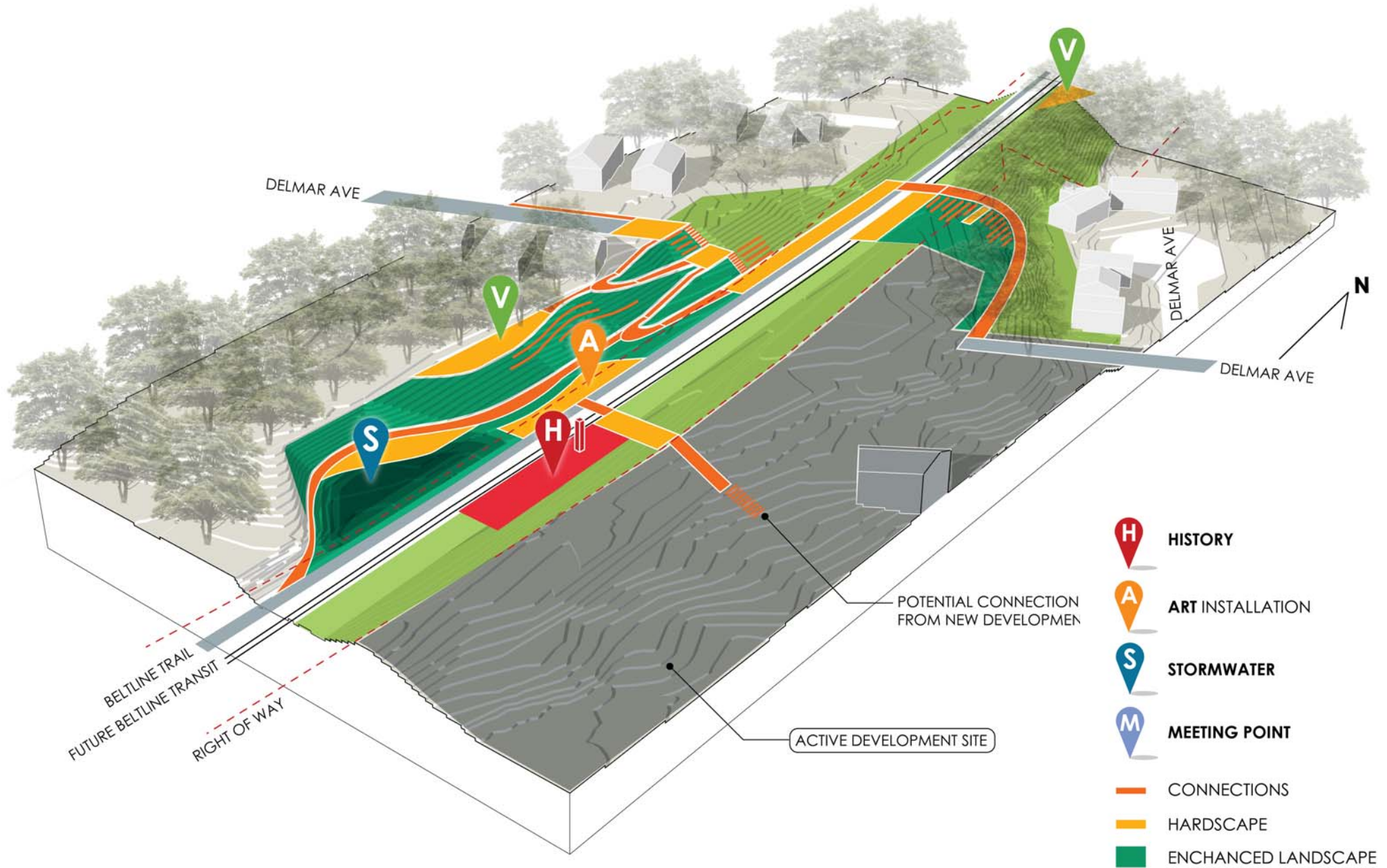


E









BREAKOUT SESSION

WE WANT YOUR FEEDBACK ON ...

- Prioritization of access points along the ENTIRE corridor
- Vertical connection concepts at grade crossings - Ormewood Ave and Confederate Ave
- Node opportunities - Glenwood Avenue to Confederate Avenue



// Questions

Thank you!