

MAP 3 // WESTSIDE

I-20 TO W. MARIETTA ST.

After running through predominantly residential neighborhoods to the west of the Atlanta University Center, the Atlanta BeltLine corridor is heavily influenced by active railway and disjointed landscape patterns in the top end of this section. The Tier 1 Environmental Impact Study, approved by the Federal Transit Administration in August 2012, identified an alignment that includes on-street segments as well as in-corridor portions.

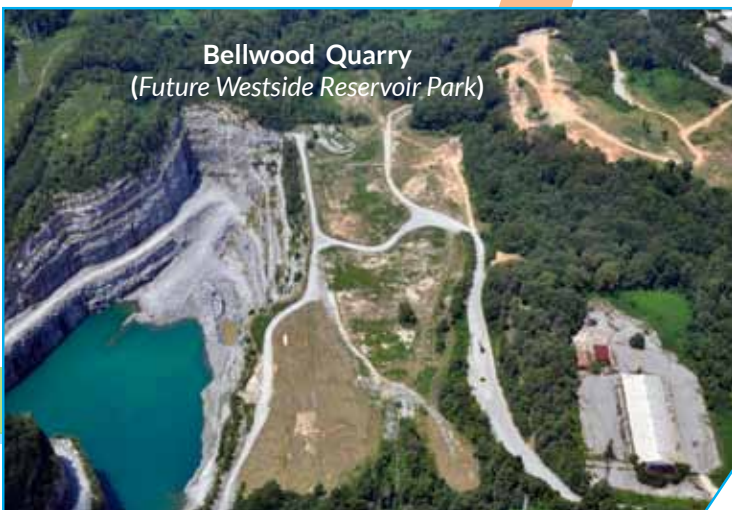
Key Points of Interest:

Residents in nearby communities will gain greater access to the many amenities of [Washington Park](#), where the Atlanta BeltLine forms the western boundary.

A potential combined Atlanta BeltLine/MARTA station on the Proctor Creek line at [Joseph E. Boone Boulevard](#) (formerly Simpson Road) would increase travel options for area commuters and help to boost economic development efforts in the area.

Project plans call for the City's facilities to move out of [Maddox Park](#), opening up and revitalizing more greenspace for leisure use.

Just west of Marietta Boulevard, the old Bellwood Quarry and surrounding property are being transformed into [Westside Reservoir Park](#). The park will be Atlanta's largest, and the new reservoir will hold approximately 2 billion gallons of water.



Bellwood Quarry
(Future Westside Reservoir Park)



Colorful art installation by Santiago Menendez
lines the hiking trail at Washington Park