



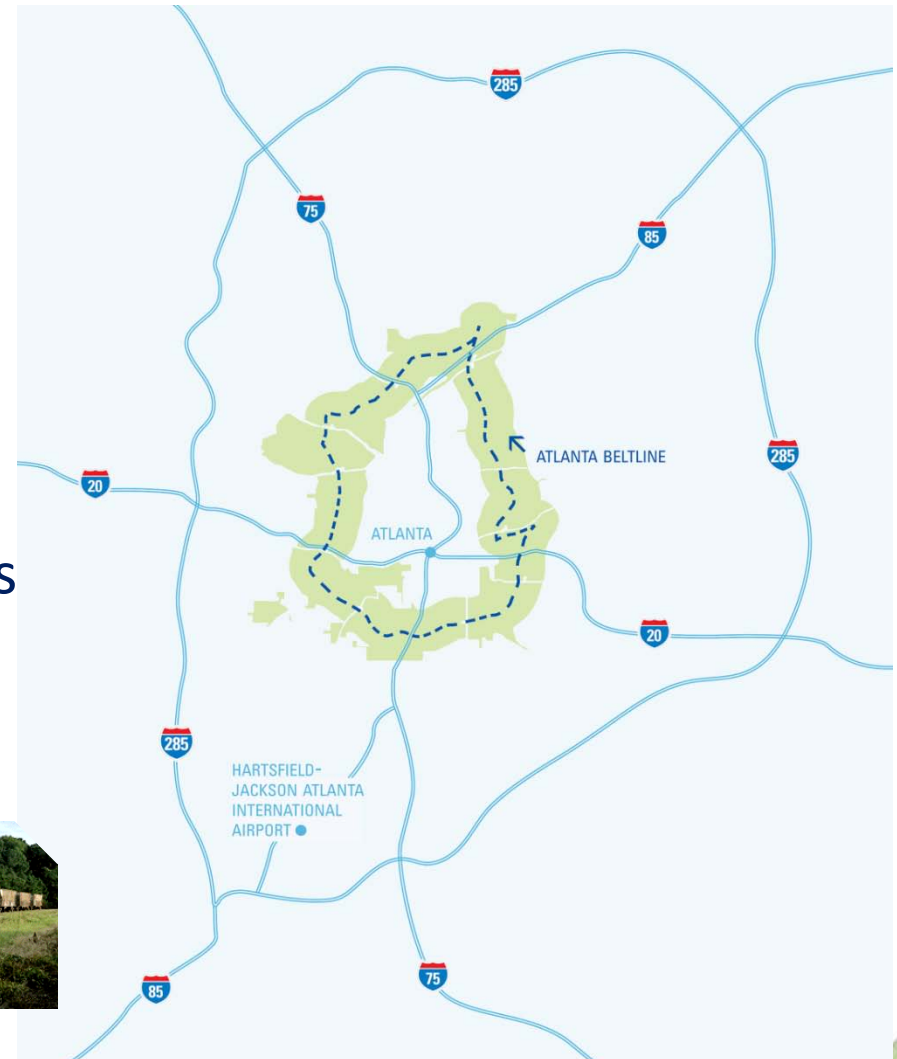
// Northeast Corridor Brownfield Cleanup Kickoff Meeting

December 12, 2013

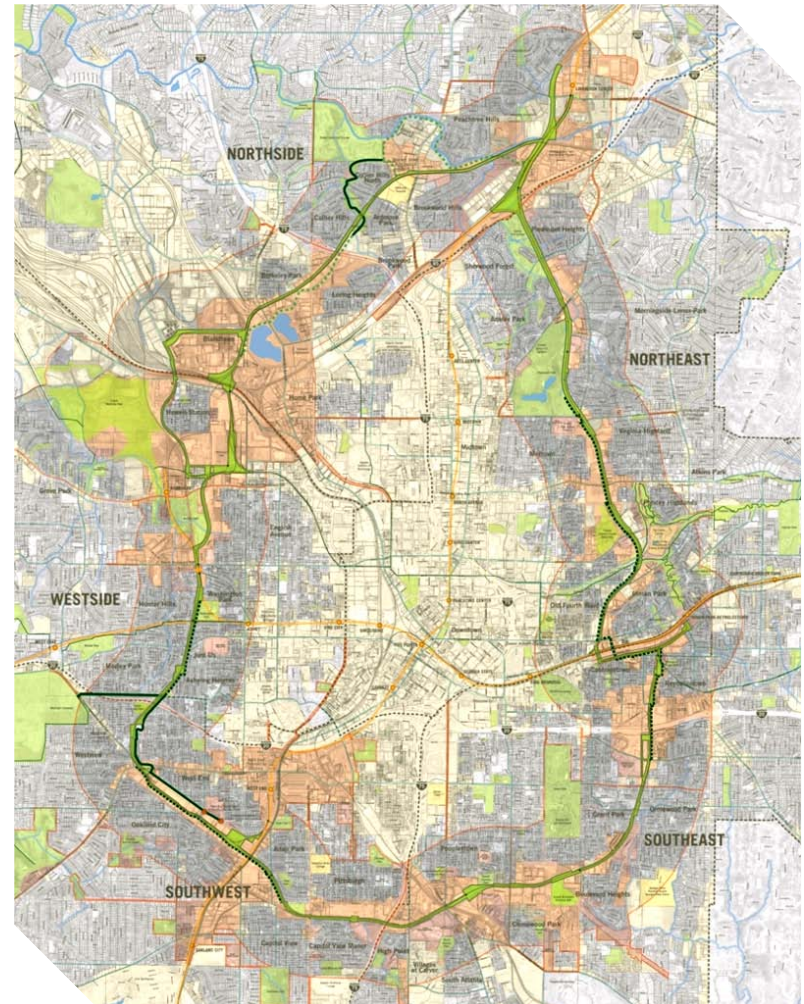
// Where is the Atlanta BeltLine?



- In the heart of the Atlanta region
- Connects many of Atlanta's cultural destinations
- Utilizes historic freight rail rights of way around the center of town



- Connects 45 neighborhoods
- 22% of City of Atlanta population lives in the planning area
- 19% of the City's land mass is inside the planning area
- 40% increase in Atlanta's parkland
- 6,500 acre TAD



// The Atlanta BeltLine: Key Elements



Parks and Arboretum



Trails



Transit & Transportation Infrastructure



Jobs & Economic Development



Affordable Workforce Housing



Streetscapes & Public Art



Historic Preservation



Environmental Clean-up

// Progress to Date



In Design:

- 9 Gateway/TCSP Plaza
 - 10 Eastside Trail Extension
 - 11 Southwest Trail
 - 12 Southeast Trail
- - Trails
● - Parks

Completed:

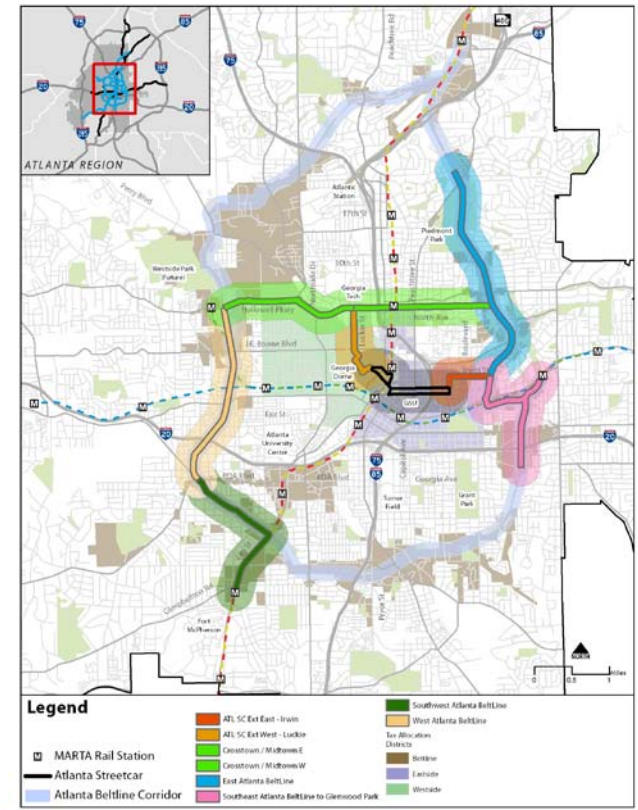
- 1 Eastside Trail (Oct 2012)
- 2 Historic Fourth Ward Park (July 2011)
- 3 Skate Park (June 2011)
- 4 Boulevard Crossing Park (Sept 2011)
- 5 D.H. Stanton Park (May 2011)
- 6 West End Trail Phase I (Oct 2008)
- 7 Northside Trail Opened (April 2010)
- 8 West End Trail Phase II (June 2010)

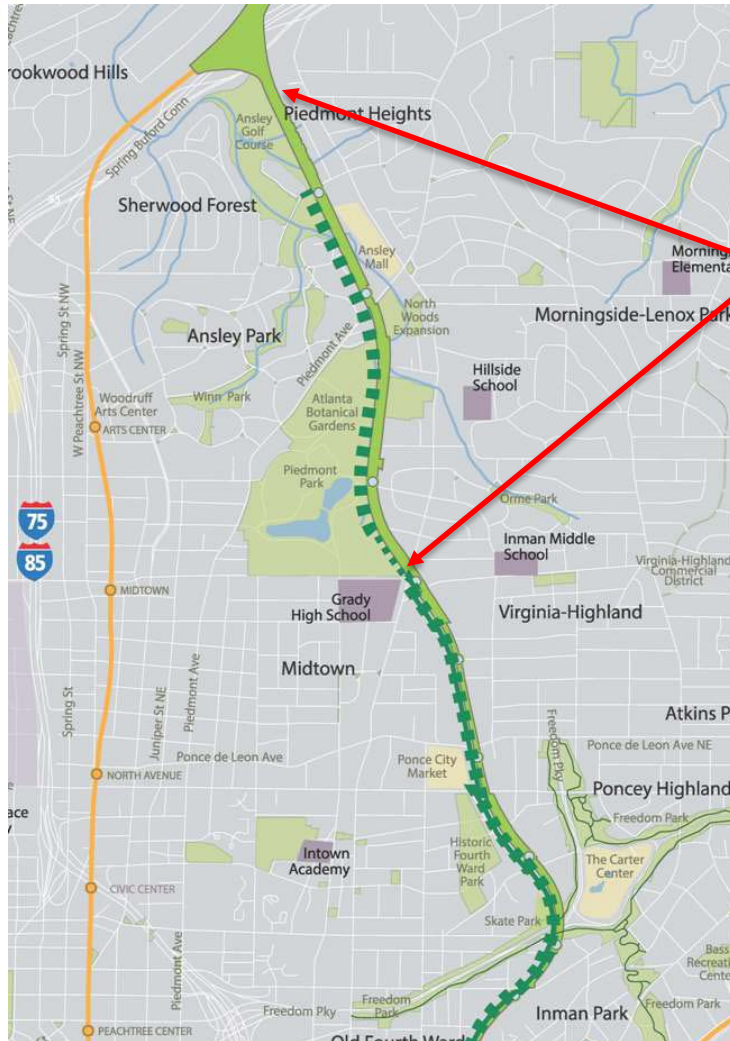


// Purpose of NE Corridor Clean up



- Remediation is a significant component of this 22-mile urban redevelopment project
- This clean up effort will make the corridor eligible for future construction funding
- Other Upcoming Corridor Work
 - Survey
 - Environmental Assessment
 - Monroe Dr to ~Montgomery Ferry
 - Preliminary Engineering
 - Separate Public Outreach Process





Project Funding:

- EPA Brownfield Cleanup Grant

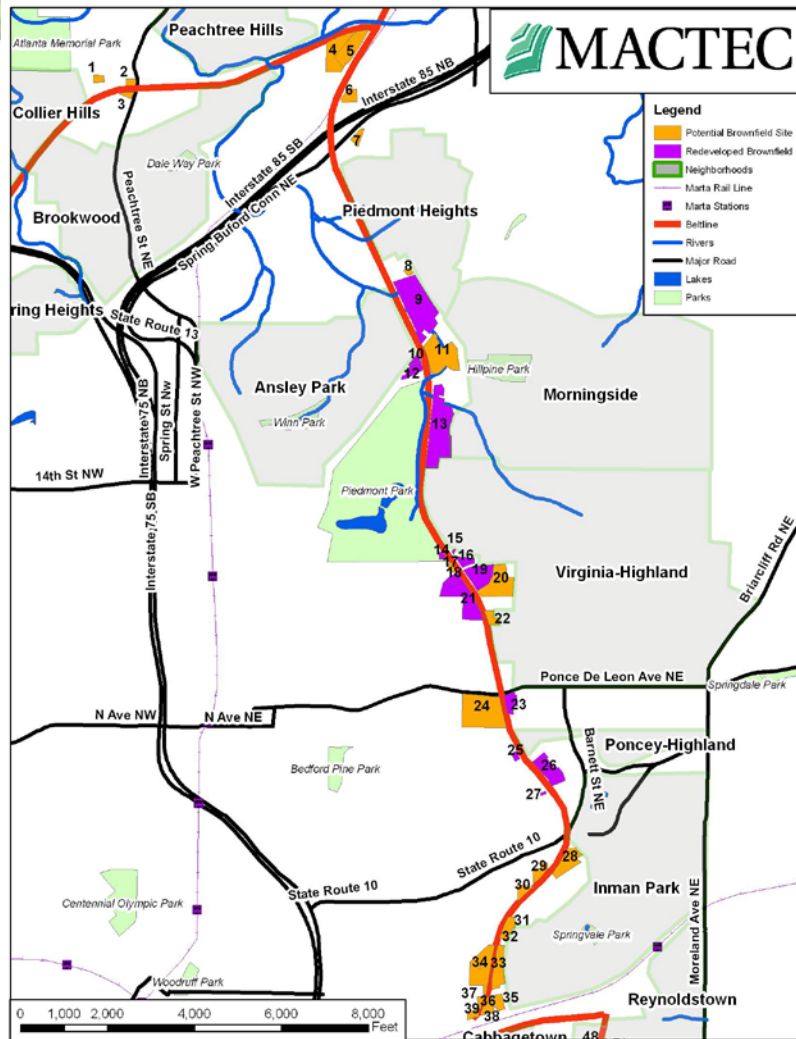
Project Extents:

- Monroe Drive to Buford Highway
- Approximately 2.1 miles, 30 acres
- Alongside Piedmont Park, Ansley Square, Ansley Mall and Ansley Golf Course

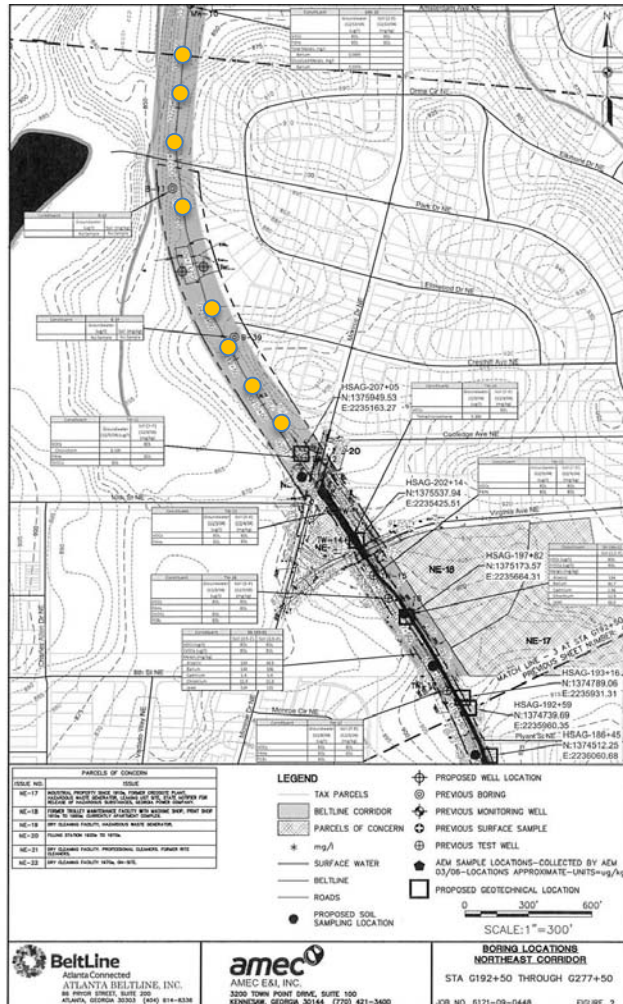
Project Timeline:

- Approximately 8-12 months

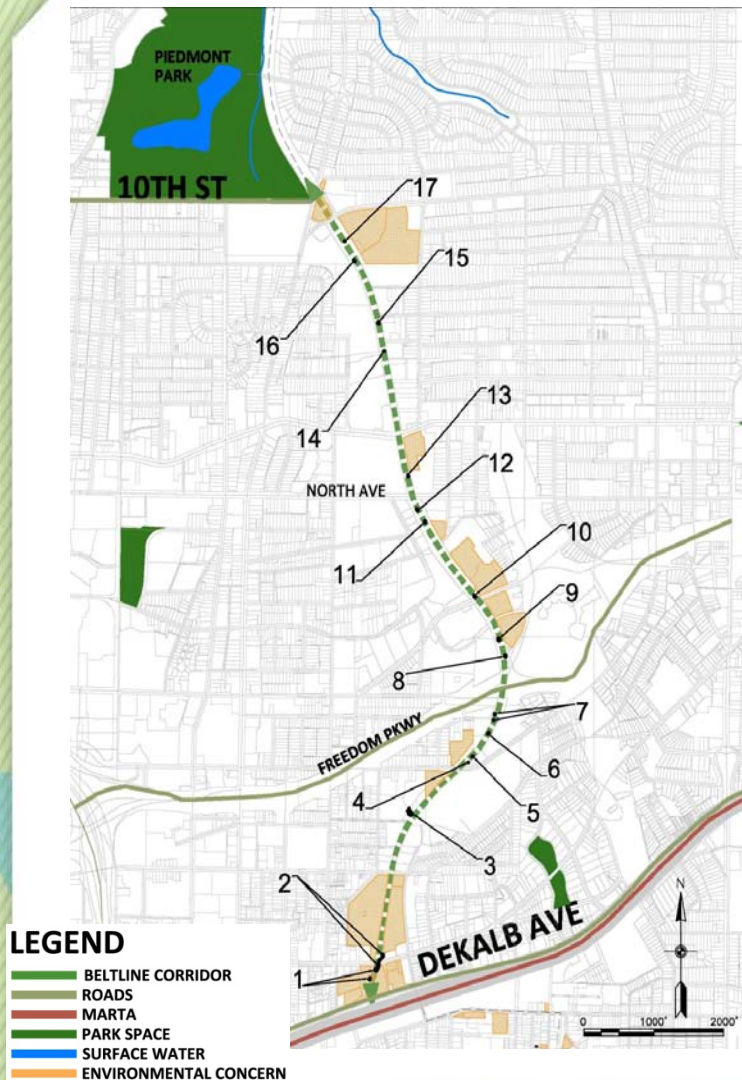
// Past Uses of Adjacent Properties



- Dry Cleaning Facility
- Unpermitted Landfill
- Underground Storage Tanks
- Lumberyard
- Wood Mill
- Historic Coal Yard
- Heavy Freight Rail Corridor



- **Step 1 – Assessment:**
 - Starting in January, approximately 2 months
 - Collecting soil and groundwater samples at regular intervals along the corridor for analysis
- **Step 2 – Delineation:**
 - Additional soil sampling around areas of concern to determine physical limits of contaminants
- **Step 3 – Remediate:**
 - Excavation and removal of contaminated soil



- Identified 17 Areas of Concern over 2.5 mile corridor
 - 75+ borings installed
 - 250+ soil samples
 - 11 groundwater samples
 - Laboratory analytical plan included 127 chemical constituents
- Surface soil remediation:
 - Removal and off-site disposal
 - Approximately 2,300 tons of impacted soil removed
- Subsurface soil control measures:
 - Clean soil/concrete trail barrier
 - Environmental covenant

Q & A