

We want to hear from you.....

STAFF CONTACTS 86 Pryor St. SW Suite 200, Atlanta, GA 30303 Main Phone: (404) 880-4100 FAX: (404) 880-0616

President and Chief Executive Officer Terri Y. Montague TMontague@ATLBeltLine.org	Executive Assistant Jackie Johnson (interim) JJohnson@ATLBeltLine.org	Director Community Engagement Beth McMillan BMcMillan@ATLBeltLine.org	Community Engagement Advocate Rukiya S. Eaddy REaddy@ATLBeltLine.org	Director of Communications Ethan Davidson EDavidson@ATLBeltLine.org
Director of Design Fred Yalouris FYalouris@ATLBeltLine.org	Director of Finance Richard Lutch RLutch@ATLBeltLine.org	Director of Real Estate Paul G. Vespermann PVespermann@ATLBeltLine.org	Program Management Officer Lee Harrop LHarrop@ATLBeltLine.org	Senior Project Manager Kevin W. Burke KBurke@ATLBeltLine.org
Senior Project Manager Nate Conable NConable@ATLBeltLine.org	Senior Project Manager James Alexander JAlexander@ATLBeltLine.org			

Atlanta BeltLine, Inc. Board of Directors

Calvin "Cal" Darden Chair of the Board, Atlanta BeltLine, Inc.	The Honorable Shirley Franklin Vice Chair of the Board, Atlanta BeltLine, Inc. Mayor, City of Atlanta	The Honorable Jim Maddox Atlanta City Council District 11	Joseph A. Brown Director of Equity/Structured Finance, Centerline Capital Group, Board of Directors, ADA	
The Honorable LaChandra Butler Burks President, Atlanta Board of Education District 5	The Honorable Emma Darnell Fulton County Board of Commissioners District 5	John Somerhalder Chairman, BeltLine Partnership President & Chief Executive Officer, AGL Resources	Clara Axam Director Atlanta Office, Enterprise Community Partners Board of Directors, MARTA	Elizabeth "Liz" Coyle Community Representative

Atlanta BeltLine Inc. (ABI), an affiliate of the Atlanta Development Authority, is the entity tasked with planning and executing the implementation of the BeltLine in partnership with the BeltLine team including City of Atlanta Departments. Its functions include specifically defining the BeltLine plan; leading efforts to secure federal, state and local funding; continuing the BeltLine community engagement process; and serving as the overall project management office to execute the BeltLine plan, including the coordination of planning and execution activities with other City of Atlanta departments and managing all vendors and suppliers. Atlanta BeltLine Inc. is also responsible for tracking and reporting progress on the BeltLine to the Atlanta City Council, Atlanta Public Schools and Fulton County, the three taxing authorities that authorized the BeltLine TAD legislation in 2005.

Visit us
online

www.BeltLine.org

About the BeltLine

The BeltLine has the extraordinary potential to transform the City of Atlanta. The BeltLine will combine parks and greenspace, transit and trails, transportation and pedestrian access, affordable workforce housing and public art along 22 miles of historic rail segments that encircle the urban core. The BeltLine will ultimately connect 45 neighborhoods. As one of the most comprehensive economic development efforts ever undertaken in the City of Atlanta and the largest, most wide-ranging urban redevelopment currently underway in the U.S., the BeltLine will serve as a model of environmental sustainability, effective land use and historic preservation.

Atlanta, GA 30303
Suite 200
86 Pryor Street SW



ATLANTA
BELTLINE
INC.



BeltLine
Atlanta Connected

May 2009 Volume Two - Issue Two



From the desk of the President and CEO:

This spring, the BeltLine has continued to clear major hurdles on several fronts, making significant progress. In March, Atlanta BeltLine, Inc. (ABI), the City of Atlanta, GDOT, Amtrak, MARTA, the Atlanta Regional Commission, the Transit Implementation Board and others reached an agreement that preserves the Northeast BeltLine Corridor to be used exclusively by the BeltLine and identified an alternate route for future passenger rail service. Earlier that month, the City Council adopted four of the ten Subarea Master plans, marking a major step forward for several BeltLine communities.

In April, Governor Purdue signed HB 63 into law, reaffirming the will of the voters by reenacting the Georgia Redevelopment Powers Act. This law allows the participation of school districts in Tax Allocation Districts (TAD). With this law, Atlanta Public Schools can once again participate in the BeltLine TAD.

In April and early May, the Environmental Impact Study (EIS) began another phase of public input on the alignment of transit and trails, as well as the type of technology the transit will use, and where stations might be located.

We held several extremely successful community events that attracted hundreds of volunteers. Over 200 volunteers participated in the Earth Day clean-up of the Northeast BeltLine Corridor on April 18. The event was planned with the help of numerous partners, including Keep Atlanta Beautiful, the BeltLine Partnership, Ponce Park, Park Pride, the West Atlanta Watershed Alliance and the Atlanta Toolbank. Over 200 riders participated in the BeltLine Earth Day Bike tour, organized by the Atlanta Bicycle Coalition, and dozens of volunteers staffed the BeltLine booth at the Inman Park Festival and the Sweet Auburn Festival.

ABI has also been working with the BeltLine TAD Advisory Committee to develop the community benefits framework and the equitable development plan for the BeltLine, which will guide the jobs strategy and inform project priorities over the next two decades. In addition, we are taking the necessary steps to return to the bond market to issue the next series of BeltLine TAD bonds.

To follow the BeltLine's progress and find ways to get involved, visit us online at www.BeltLine.org.

Terri Y. Montague



Environmental Impact Study:
Community Input Shapes BeltLine Transit and Trails

ABI and MARTA recently held a series of public workshops to receive community input on the future of BeltLine transit and trails. Video presentations and interactive mapping presentations showed the public options for transit and trails, covering everything from where transit stations should be located, to how important it is for the transit services to cater to local and regional needs, to what facilities the trail needs to connect. These workshops also gave residents the chance to discuss the environmental impacts they were concerned about and learn about the existing conditions

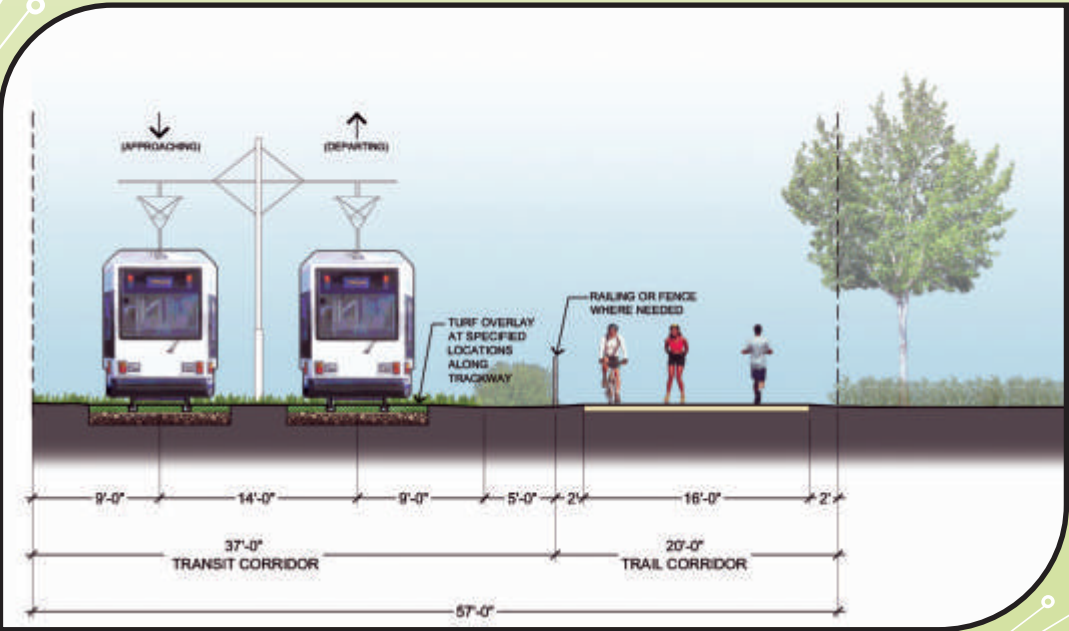
and proposed design features of the BeltLine corridor. Their comments are helping to shape the BeltLine planning process and will have an impact on what ultimately gets built.

All of this input is part of the Environmental Impact Study, which is one of the necessary steps to make the BeltLine eligible for federal transportation funding. This study is also vital to planning efforts supporting the transit and trail components of the BeltLine. Videos and images from these presentations are available online at www.BeltLine.org.

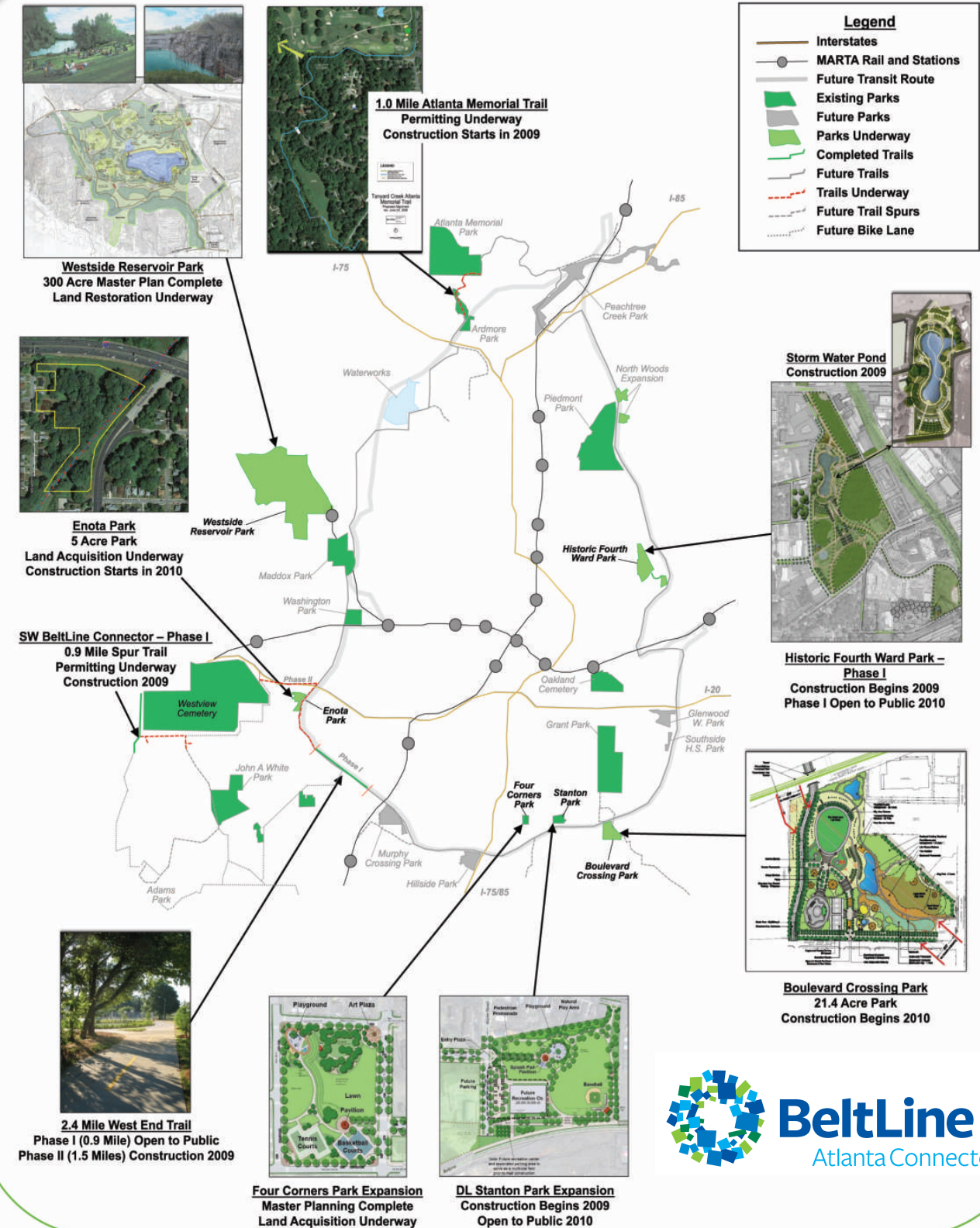


A screenshot of one the Environmental Impact Study workshop videos available on www.BeltLine.org.

A rendering of one of the options for the BeltLine Corridor



BeltLine Projects Underway May 2009



UPCOMING EVENTS

May-July 2009

Date	Time	Meeting/Event	Location
05/13/09	6:00-7:00 PM	Northside BeltLine 101	Piedmont Hospital, 1948 Peachtree Rd, 77 Building, Classroom 4
05/14/09	6:30-8:30 PM	Environmental Effects Report Public Hearing	Hillside, 690 Courtenay Dr. NE, 30306
05/19/09	6:00-7:00 PM	Southeast BeltLine 101	Zoo Atlanta - 800 Cherokee Ave, SE, Ford Room, 30315
06/04/09	6:00-7:00 PM	Northeast BeltLine 101	City Hall East - 675 Ponce de Leon Ave, Ponce Park Office, 1st floor, 30308
06/09/09	6:00-7:00 PM	Westside BeltLine 101	Atlanta Contemporary Arts Center - 535 Means Street, 30318
06/10/09	6:00-7:00 PM	Northside BeltLine 101	Piedmont Hospital, 1948 Peachtree Rd, 77 Building, Classroom 4
06/11/09	6:30-8:30 PM	Northeast Study Group - Subarea 6 Master Planning	Hillside, 690 Courtenay Dr. NE, 30306
06/13/09	12:00-1:00 PM	Southwest BeltLine 101	West Hunter Street Baptist Church 1040 Ralph D. Abernathy Blvd, 30310
06/16/09	8:30 -10:30 AM	ABI Board of Directors Meeting	86 Pryor Street SW, Atlanta, GA 30303
06/16/09	6:00-7:00 PM	Southeast BeltLine 101	Zoo Atlanta - 800 Cherokee Ave, SE, Ford Room, 30315
07/07/09	4:00-6:00 PM	BeltLine Partnership Board Meeting	50 Hurt Plaza, Suite 1045, 30303



Hundreds of volunteers pitched in for the Earth Day Clean Up on the BeltLine from Freedom Parkway to Dekalb Avenue on April 18. (Photo credit: Christopher T. Martin)

Transit Update: BeltLine Northeast Corridor Abandonment Proceeds ABI and MARTA Seek Federal Transportation Funds

In March, after 45 days of study, ABI, the City of Atlanta, GDOT, Amtrak, MARTA and others agreed that the BeltLine Northeast Corridor will be used exclusively for the BeltLine, and other options exist for future passenger rail service in the Atlanta region. This was a major step forward for the BeltLine and preserves the momentum for the BeltLine vision of transit, trails, greenspace and a new public realm.

In April, ABI and MARTA submitted requests for federal transportation funding for transit and trails. MARTA sponsored the transit proposal, where the BeltLine is included as part of a complement of regional projects; and ABI sponsored the trail proposal. The BeltLine transit proposal requested \$260 million and the BeltLine trail proposal requested over \$20 million.

BeltLine Equitable Development Plan: What It Means For You

One of the guiding principles from the BeltLine Five Year Work Plan is geographic balance to effectively meet the needs of the diverse groups of individuals and communities that share the BeltLine, enabling all quadrants of the city to experience the benefits of the BeltLine. In order to reinforce that principle in the near term project priorities, Atlanta BeltLine, Inc. and the BeltLine Tax Allocation District Advisory Committee are producing an Equitable Development Plan as required by City Council.

In the United States, large scale urban infrastructure projects have historically slashed through existing neighborhoods, provided imbalanced amenities to wealthier districts, and failed to seek the input of residents. The BeltLine is different. It primarily runs along existing railroad right-of-way, preserving existing neighborhoods. Over time, it creates geographic balance by providing a variety of amenities and community benefits to neighborhoods in all quadrants of the city. It also seeks the input of residents through a community engagement framework, which includes Study Groups. While the geographic allocation of public investment dollars is important, it is one component of a much broader approach to generating positive long-lasting impacts in all areas around the BeltLine.

The Equitable Development Plan is focused on:

- Developing and planning transit, trails, parks and affordable housing in a way that creates a more livable and geographically balanced Atlanta;
- Recruiting economic development to create business and job opportunities;
- Minimizing displacement and leveraging economic opportunity to stabilize neighborhoods;
- Incorporating and encouraging community participation in project planning;
- Preserving and enhancing the historic and cultural character of neighborhoods; and
- Leveraging existing neighborhood assets to encourage community connectivity, competitiveness and sustainability.

For more information on the Equitable Development Plan and BeltLine implementation, visit www.BeltLine.org.