

# We want to hear from you.....

## STAFF CONTACTS

President and Chief Executive Officer  
Terri Y. Montague  
TMontague@ATLBeltLine.org

Director of Design  
Fred Yalouris  
FYalouris@ATLBeltLine.org

Senior Project Manager  
Nate Conable  
NConable@ATLBeltLine.org

Executive Assistant  
Jackie Johnson (interim)  
JJohnson@ATLBeltLine.org

Director of Finance  
Richard Lutch  
RLutch@ATLBeltLine.org

Senior Project Manager  
James Alexander  
JAlexander@ATLBeltLine.org

Director Community Engagement  
Beth McMillan  
BMcmillan@ATLBeltLine.org

Director of Real Estate  
Paul G. Vespermann  
PVespermann@ATLBeltLine.org

Main Phone: (404) 880-4100 FAX: (404) 880-0616

Community Engagement Advocate  
Rukiya S. Eaddy  
REaddy@ATLBeltLine.org

Program Management Officer  
Lee Harrop  
LHarrop@ATLBeltLine.org

Director of Communications  
Ethan Davidson  
EDavidson@ATLBeltLine.org

Senior Project Manager  
Kevin W. Burke  
KBurke@ATLBeltLine.org

### City of Atlanta Liaisons to ABI:

Senior Project Manager, Planning  
Jonathan S. Lewis, AICP  
JLewis@ATLantaga.gov

Director, Park Design  
Paul Taylor  
PATaylor@ATLantaga.gov

## Atlanta BeltLine, Inc. Board of Directors

Calvin "Cal" Darden  
Chair of the Board, Atlanta BeltLine, Inc.

The Honorable Shirley Franklin  
Vice Chair of the Board, Atlanta BeltLine, Inc.  
Mayor, City of Atlanta

The Honorable Jim Maddox  
Atlanta City Council District 11

Joseph A. Brown  
Director of Equity/Structured Finance,  
Centerline Capital Group,  
Board of Directors, ADA

The Honorable LaChandra Butler Burks  
President, Atlanta Board of Education  
District 5

The Honorable Emma Darnell  
Fulton County Board of  
Commissioners District 5

John Somerhalder  
Chairman, BeltLine Partnership  
President & Chief Executive Officer,  
AGL Resources

Clara Axam  
Director Atlanta Office,  
Enterprise Community Partners  
Board of Directors, MARTA

**Atlanta BeltLine Inc. (ABI)**, formed by the Atlanta Development Authority, is the entity tasked with planning and executing the implementation of the BeltLine in partnership with the BeltLine team including City of Atlanta Departments. Its functions include specifically defining the BeltLine plan; leading efforts to secure federal, state and local funding; continuing the BeltLine community engagement process; and serving as the overall project management office to execute the BeltLine plan, including the coordination of planning and execution activities with other City of Atlanta departments and managing all vendors and suppliers. Atlanta BeltLine Inc. is also responsible for tracking and reporting progress on the BeltLine to the Atlanta City Council, Atlanta Public Schools and Fulton County, the three taxing authorities that authorized the BeltLine TAD legislation in 2005.

## About the BeltLine

The BeltLine has the extraordinary potential to transform the City of Atlanta. The BeltLine will combine parks and greenspace, transit and trails, transportation and pedestrian access, affordable workforce housing and public art along 22 miles of historic rail segments that encircle the urban core. The BeltLine will ultimately connect 45 neighborhoods. As one of the most comprehensive economic development efforts ever undertaken in the City of Atlanta and the largest, most wide-ranging urban redevelopment currently underway in the U.S., the BeltLine will serve as a model of environmental sustainability, effective land use and historic preservation.



Atlanta, GA 30303  
Suite 200  
86 Pryor Street SW

AtlantaConnected  
BeltLine



Visit us  
online

[www.BeltLine.org](http://www.BeltLine.org)

ATLANTA  
BELTLINE  
INC.



BeltLine  
Atlanta Connected

August 2009 Volume Two - Issue Three



BeltLine  
Atlanta Connected

### From the desk of the President and CEO:

This summer has been bursting with activity for the BeltLine. In July, Atlanta BeltLine, Inc. (ABI) reached an agreement with the Georgia Department of Transportation (GDOT), preserving another 3.5 miles of the corridor in the southwest and southeast for the BeltLine. Nearly 50% of the corridor is now secure through ownership, lease or option for the BeltLine –exceeding the Five Year Work Plan goal by over 10%. Earlier this summer, the City of Atlanta received a \$1 million grant from the U.S. Environmental Protection Agency for the purpose of cleaning brownfields, and areas on the BeltLine are eligible for this funding.

Construction has begun on Historic Fourth Ward Park, and by the end of 2010, the initial phases of five parks will be complete and seven miles of trail will be completed or under construction. In total, 300 acres of land have been acquired for greenspace along the BeltLine.

The land use planning to ensure livable communities along the BeltLine has reached the halfway mark, with five of the ten subarea master plans completed. The Subarea 6 master plan for the Piedmont-Monroe area in Northeast Atlanta is expected to be complete by the end of the year, and the remaining four subarea master plans will launch during the fall and winter of 2009, with the goal of completing all of the master plans by the end of 2010.

The BeltLine Affordable Housing Trust Fund, which launched at the beginning of 2009, is funded at \$8.8 million and is accepting applications for downpayment assistance. This initial funding is expected to create 300 affordable homes. Fifty eight private development projects are complete or under construction in the BeltLine Planning Area (within a half-mile of the BeltLine corridor) since 2005, with 50 in the BeltLine Tax Allocation District (TAD). In addition, the ABI Board of Directors adopted the BeltLine Equitable Development Plan and the Community Benefits Jobs Policy Framework in June 2009.

Finally, September 1 will be my last day as ABI's President and CEO. I commend to you a great Project vision, and an incredible team and cadre of committed partners whom I am confident will carry forward BeltLine implementation momentum under new leadership. Soon enough, Atlantans will be using the BeltLine in their everyday lives.

To follow the BeltLine's progress and find ways to get involved, visit us online at [www.BeltLine.org](http://www.BeltLine.org).

Terri Y. Montague



## Major Milestone: Almost Half of BeltLine Corridor Now Secured

### Atlanta BeltLine, Inc. and Georgia Department of Transportation Reach Agreement on 3.5 Miles of Transit and Trail Right-of-Way in the Southwest and Southeast

The BeltLine is one major step closer to reality with last month's agreement to acquire 3.5 additional miles of the corridor in which transit and trails will encircle Atlanta, connecting 45 neighborhoods. The July 9 agreement between Atlanta BeltLine, Inc. (ABI) and the Georgia

Department of Transportation (GDOT) is for a lease and an exclusive option to purchase the Southwest and a portion of the Southeast Right of Way. Over the coming months ABI and its partners will start clean up in the corridor to preserve it for transit and work towards opening it

to the public as quickly as possible. These sections of the BeltLine, from Allene Avenue to Lena Street in the Southwest and from Wylie Street to Memorial Drive in the Southeast, run through and connect the neighborhoods of:

- Murphy Crossing
- Adair Park
- West End
- Westview
- Mozely Park

- Hunter Hills
- Reynoldstown
- Cabbagetown
- North Ormewood Park

#### Landmarks along the route include:

- Rose Circle Park
- Washington Park
- Kroger Citi Center
- Ralph David Abernathy Corridor
- Martin Luther King Corridor
- Memorial Drive Corridor
- Glenwood Green
- Atlanta University Center

With this agreement, nearly half (48%) of the planned BeltLine corridor has now been secured through purchase, lease or option—exceeding expectations for the

project's first five years of development, despite early setbacks and the most challenging economic environment in decades. To learn more about the BeltLine,

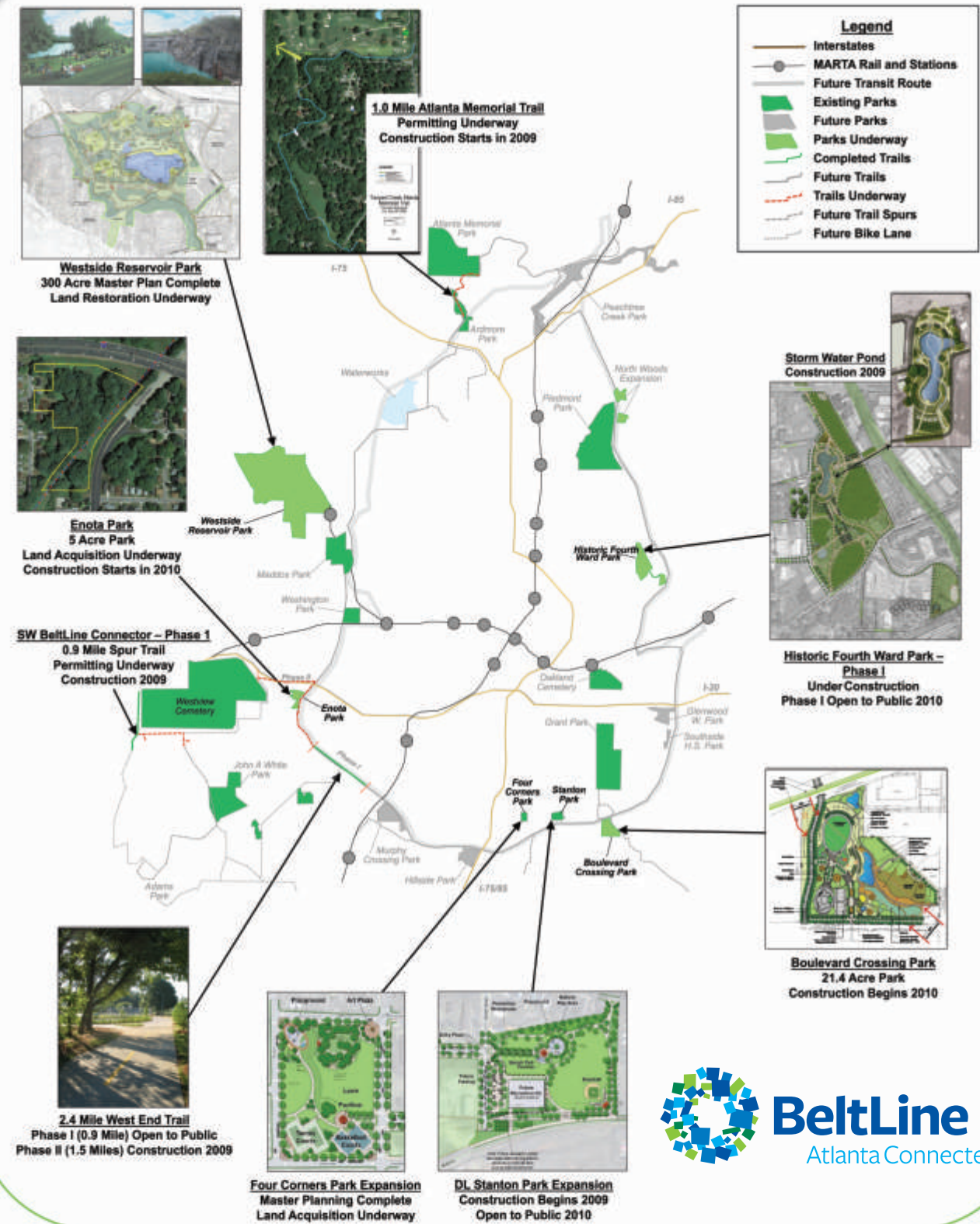
sign up for a tour of the corridor (including these newly-acquired sections), and participate in the planning of the BeltLine, please visit [www.BeltLine.org](http://www.BeltLine.org).



Washington Park, one of the landmarks along the Southwest BeltLine corridor. ABI recently secured an option and lease on this corridor from the Georgia Department of Transportation. (Credit: Christopher T. Martin)



# BeltLine Projects Underway August 2009



## UPCOMING EVENTS August-October 2009

Date	Time	Meeting/Event	Location
08/29/09 08/30/09	10:00 AM-7:00 PM	Grant Park Summer Shade Festival – Volunteer Opportunity	Visit <a href="http://www.gpconservancy.org">www.gpconservancy.org</a> for more information
09/01/09	8:30-10:30 AM	ABI Board of Directors Meeting	86 Pryor Street SW, Atlanta, 30303
09/03/09	6:00-7:00 PM	Northeast BeltLine 101	City Hall East, 675 Ponce de Leon Ave, Ponce Park Office, 1st Fl, Atlanta 30310
09/08/09	6:00-7:00 PM	Westside BeltLine 101	Atlanta Contemporary Arts Center, 535 Means Street, NW, Atlanta, 30318
09/09/09	6:00-7:00 PM	Northside BeltLine 101	Piedmont Hospital, 1968 Peachtree Rd, 77 Building, Classroom 4, Atlanta, 30309
09/12/09 09/13/09	10:00 AM-7:00 PM	Atlanta Arts Festival – Volunteer Opportunity	Piedmont Park
09/12/09	12:00-1:00 PM	Southwest BeltLine 101	West Hunter Street Baptist Church, 1040 Ralph D. Abernathy Blvd, Atlanta 30310
09/15/09	6:00-7:00 PM	Southeast BeltLine 101	Zoo Atlanta, 800 Cherokee Ave, SE, Atlanta 30315 - Ford Room
09/26/09	12:00 -7:00 PM	Fall in the 4th Festival	North Avenue and North Angier directly south of City Hall East
10/03/09	11:00 AM-7:00 PM	HOTober Fest	Visit <a href="http://www.hotoberfest.net">www.hotoberfest.net</a> for more information.

For more information on volunteer opportunities, visit [www.BeltLine.org](http://www.BeltLine.org)

## BeltLine is Heading Back to the Bond Market

Atlanta BeltLine, Inc. is preparing to return to the bond market later this year to secure more funding for the BeltLine. On August 17, the City Council approved issuing up to \$165 million in bonds to refinance existing debt and support approved projects in the BeltLine TAD. The final amount of bonds to be issued will be determined over the next several months, and City Council will need to approve the final amount and allocation before the issuance. The bonds are supported in part by the 50 private development projects that have been completed or are under construction in the BeltLine TAD, a clear indication of the success of the project in attracting new investment to the city.



The BeltLine bridge over Fulton Street in Reynoldstown, one of the recently secured sections of the BeltLine. In July, ABI entered an option agreement and secured a lease on this corridor from the Georgia Department of Transportation. Local residents and artists recently put art and signs along the BeltLine Corridor, shown here, where the route will run. (Credit: Christopher T. Martin)



On June 2, U.S. Environmental Protection Administrator Lisa Jackson presented the City of Atlanta with a \$1 million grant for the purpose of cleaning brownfields. Areas on the BeltLine are eligible for this funding.

In this photo from left to right: City of Atlanta Commissioner of Planning and Community Development James Shelby, ABI President & CEO Terri Montague, Councilmember Kwanza Hall, Mayor Shirley Franklin, EPA Administrator Lisa Jackson, EPA Regional Administrator Stan Meiburg. (Credit: U.S. Environmental Protection Agency)