

BeltLine Quarterly Briefing

April 17, 2008



KEY ELEMENTS OF THE BELTLINE



Parks
~ 1300 new acres



Trails
33 miles



Transit
22 mile loop



**Jobs and Econ.
Development**
20 areas, 30k jobs



Workforce Housing
\$240M ~5,600 units



**Historic
Preservation**



**Streetscapes and
Transportation
Infrastructure**



**Environmental
Clean-up**

OVERVIEW



BELTLINE UPDATE

BELTLINE PARTNERSHIP UPDATE

MASTER PLANNING UPDATE

GENERAL Q & A

ABI's focus over the next 60 days:

- Understand the implications of the Supreme Court ruling on the Work Plan budget and priorities, and engage stakeholders regarding next steps
- Assure funding through FY08-09 and pursue bond issuance using the City and County tax increments already committed to the BeltLine
- Continue master planning via community-wide conversations on themes that have emerged across the master planning efforts
- Re-focus and align FY2008-09 Work Plan priorities with public and private partners.

BELTLINE UPDATE



- Complete recruitment for priority positions—e.g., Director of Design, Government Affairs Director, PMO Manager, Sr. Project Manager – NE
- Refine the BeltLine Implementation operating model
- Refinance NE Corridor land acquisition loan
- Aggressively pursue federal and state funding opportunities
- Engage new private and public partners.

OVERVIEW



BELTLINE UPDATE

BELTLINE PARTNERSHIP UPDATE

MASTER PLANNING UPDATE

GENERAL Q & A

BELTLINE PARTNERSHIP UPDATE

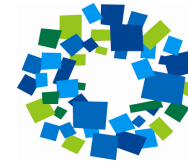


BeltLine
Atlanta Connected

Education & Awareness

- Distributed nearly 9,000 packets of information to residents and businesses in 23 neighborhoods along the southern half of the BeltLine
- Speakers Bureau will start making presentations at the end of April
- Inviting over 800 residents to “BeltLine 101” sessions in April and May
- Working with Governors Council on Developmental Disabilities and disABILITY LINK to make information about the BeltLine more accessible to people with disabilities

BELTLINE PARTNERSHIP UPDATE

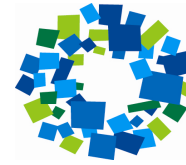


BeltLine
Atlanta Connected

Education & Awareness

- Nearly 2,500 people have taken tours since we started last year.
 - Tours leave on Friday & Saturday mornings from the Inman Park MARTA station
 - Sign up at www.beltline.org or call 404-446-4400
- BeltLine merchandise will soon be available
- BeltLine billboards are being designed now and will soon be on display

BELTLINE PARTNERSHIP UPDATE



BeltLine
Atlanta Connected

Capital Campaign

- \$28.9 million raised to date toward \$60 million goal
- Private sector support remains strong

Upcoming Events

- BeltLine Bike Ride: Sunday, April 20th (www.atlantabike.org)
- Earth Day Celebration: Saturday, April 19th at Zoo Atlanta & Saturday, April 26th at Glenwood Park (www.KeepAtlantaBeautiful.org)

BELTLINE PARTNERSHIP UPDATE



BeltLine
Atlanta Connected

Mitigating Economic Displacement

- Chief concern for residents along the BeltLine
- Engaging partners in exploring Community Land Trusts as a tool for creating ***permanently*** affordable housing around the BeltLine
- Over 100 housing, community, corporate, philanthropic, and university representatives attended student presentations at Emory University
- Partnering with the National Community Land Trust Network to host a CLT training session May 19th-21st at Morehouse College (www.cltnetwork.org)

You can reach the BeltLine Partnership at 404-446-4404 or info@beltlinepartnership.org for more information.

OVERVIEW



BELTLINE UPDATE

BELTLINE PARTNERSHIP UPDATE

MASTER PLANNING UPDATE

GENERAL Q & A

- **Intensified Community Engagement & Citizen Participation**
 - **Established Standardized Meeting Schedule**
 - **Integrated “BeltLine Teams”**
 - **Updated online BeltLine Calendar**
 - **Planned Master Planning Office Hours**
 - **Scheduled Citywide Conversation**
 - **Scheduled Citywide Open House (Park Master Plans)**

MASTER PLANNING UPDATE

Emerging Themes



- **Directly Addressed by Master Planning**
 - **Transit-Supportive Development**
 - **Protection of Single Family Neighborhoods**
 - **Trail Alignment**
 - **Design/Timing of Street Improvements**

MASTER PLANNING UPDATE

Emerging Themes



- **Indirectly Addressed by Master Planning; Addressed Directly by City-Wide Conversations, Strategy Teams, BAHAB, etc.**
 - **Design Policies & Standards**
 - **Community Benefits**
 - **Historic Preservation Targets**
 - **Affordable Housing**
 - **Public Art / Aesthetic Design**

MASTER PLANNING UPDATE



STATUS REPORT

03/11/08

Phase 1: Issues and Opportunities

Phase 2: Goals and Concepts

Phase 3: Draft Master Plan

Phase 4: Final Master Plan

Phase 5: Adoption



STATUS REPORT

- Phase 1: Issues & Opportunities
- Phase 2: Goals & Concepts
- Phase 3: Draft Master Plan
- Phase 4: Final Master Plan
- Phase 5: Adoption

MASTER PLANNING UPDATE

Subarea 3

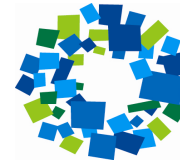


Major Recommendations

- Future East/West Connection
- Future Extension of Cherokee Avenue & Grant Street
- Employment/Cultural Center at Hill & Englewood
- 300 + acres of proposed greenspace

MASTER PLANNING UPDATE

Subarea 3

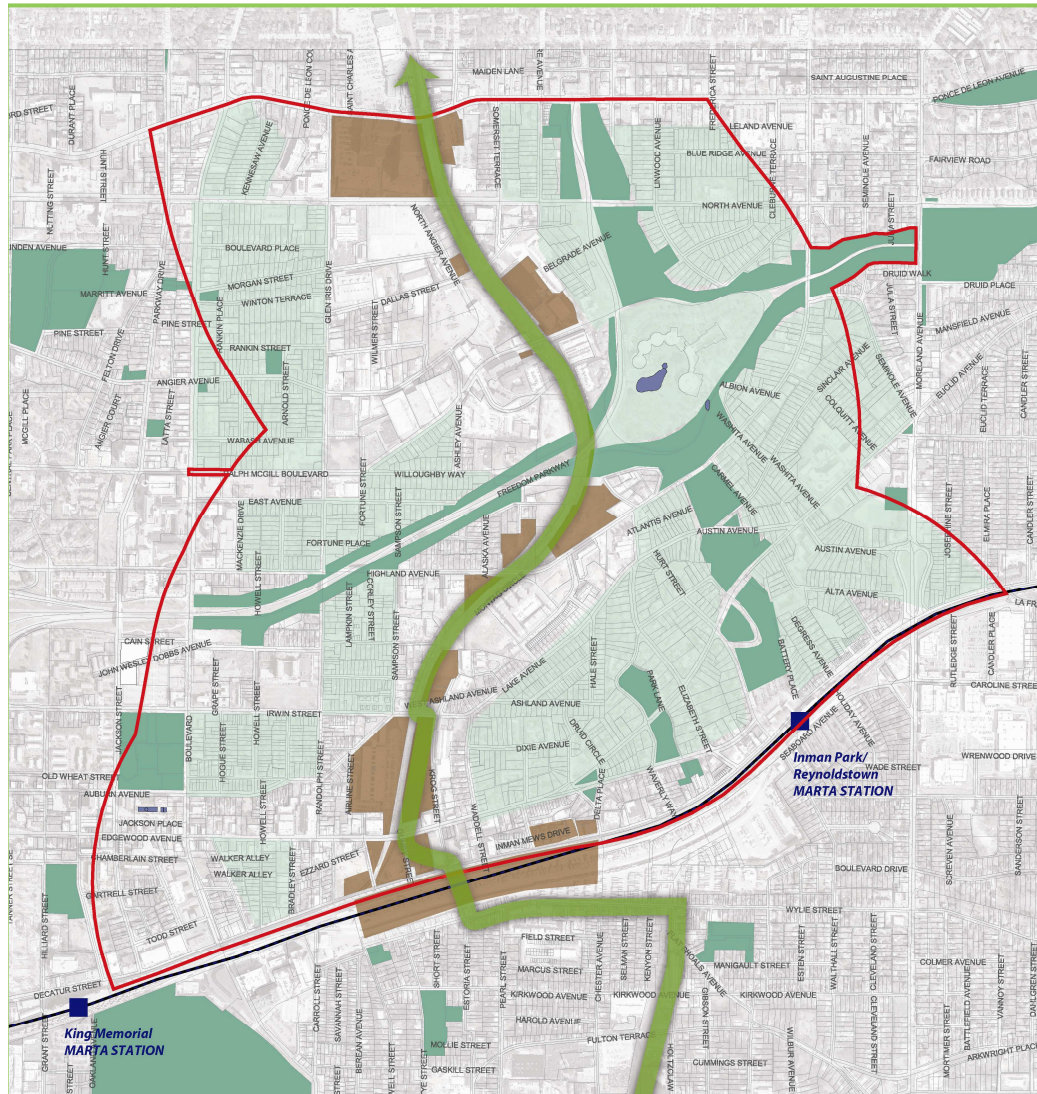


BeltLine
Atlanta Connected



MASTER PLANNING UPDATE

Subarea 5

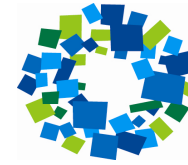


Subarea Highlights

- **New Park on North Ave Master Plan**
- **Park Area Redevelopment**
- **Trail Connections from BeltLine to Freedom Trail and Park**
- **New street Connections under Freedom Parkway & around the New Park on North Ave**

MASTER PLANNING UPDATE

Subarea 5

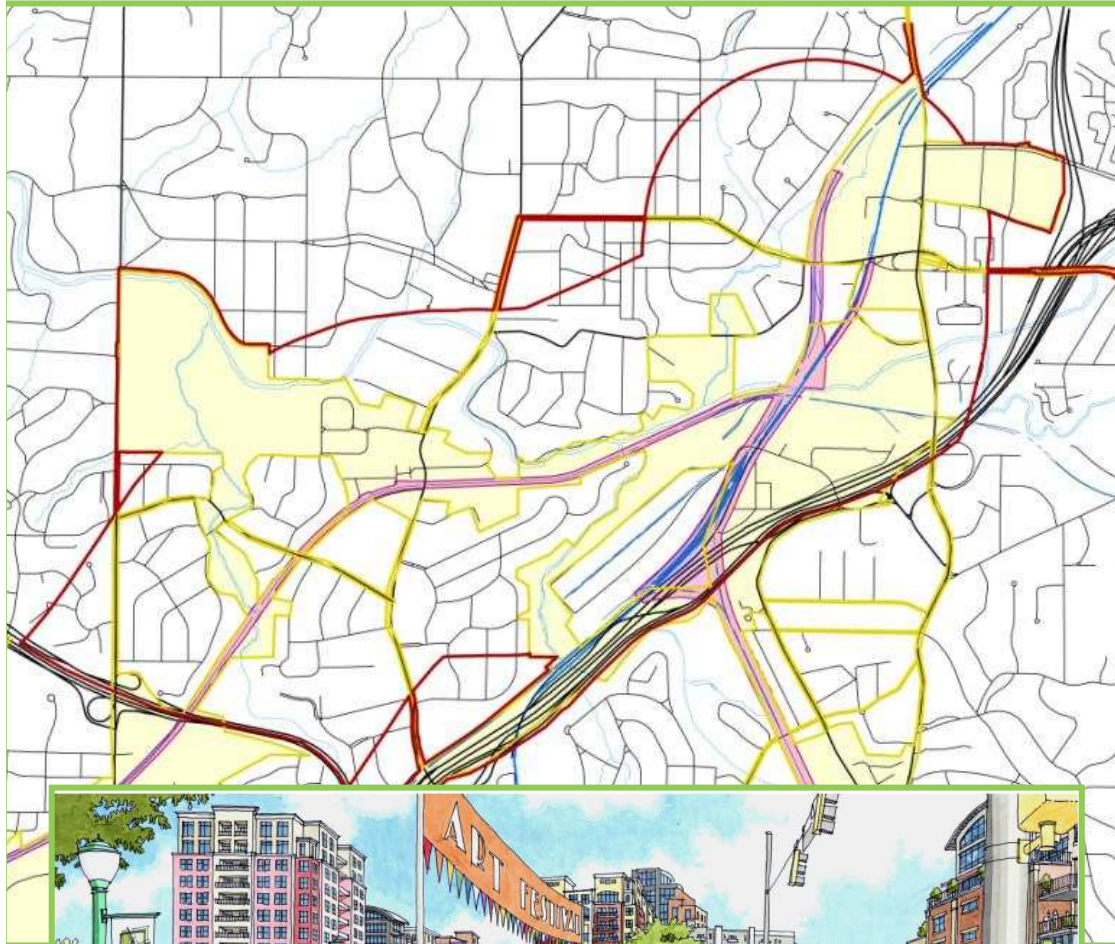


BeltLine
Atlanta Connected



MASTER PLANNING UPDATE

Subarea 7

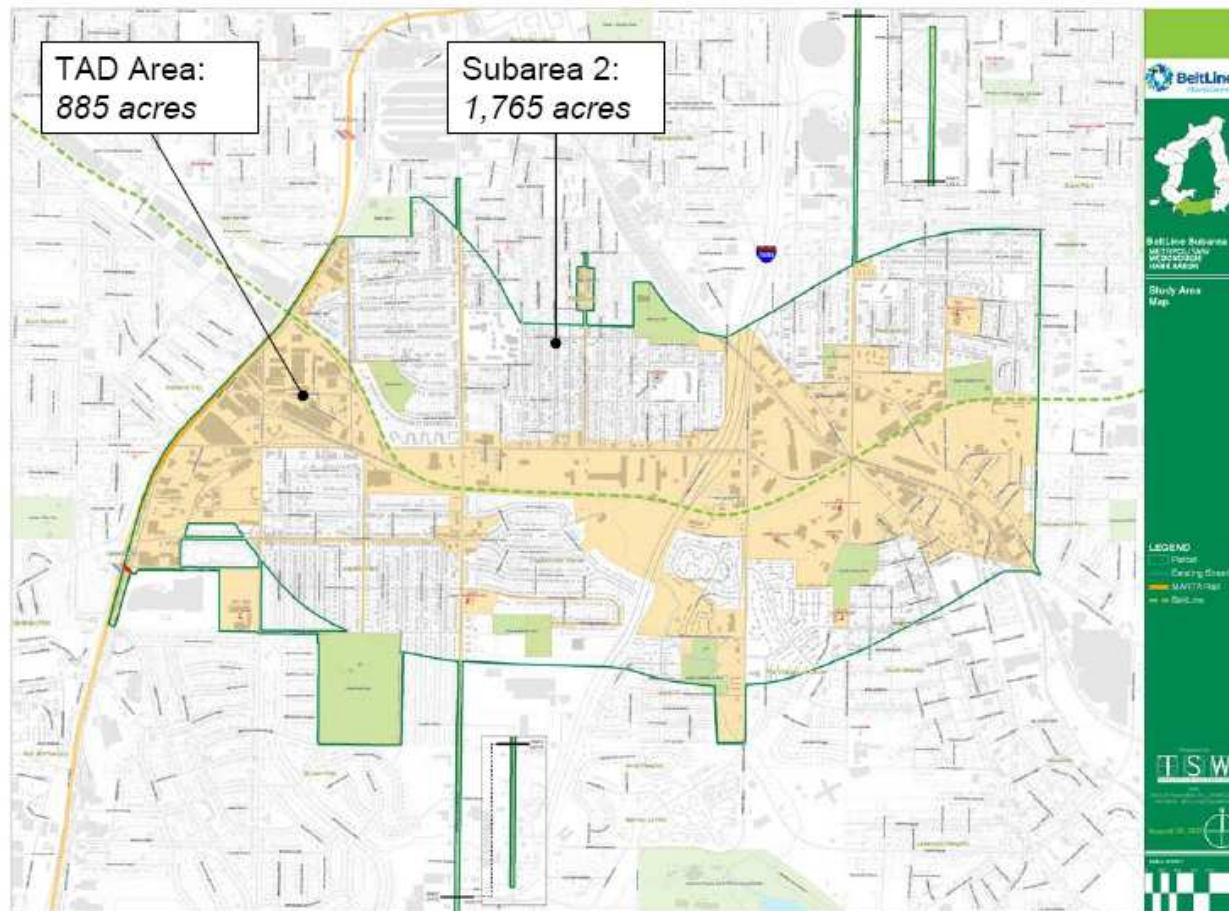


Subarea Highlights & Concerns

- Trail and Transit Connections to Piedmont Hospital
- Transit Plaza on Peachtree Road
- Colonial Homes Redevelopment
- Peachtree Creek Parkway Idea
- I-85 and Buford Highway interchanges

MASTER PLANNING UPDATE

Subarea 2

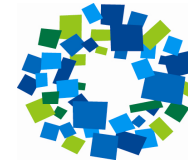


Subarea Highlights and Concerns

- Economic Development
- Job Creating Land Uses
- Diverse Job Opportunities
- Mix of Land Uses

MASTER PLANNING UPDATE

Subarea 2



BeltLine
Atlanta Connected

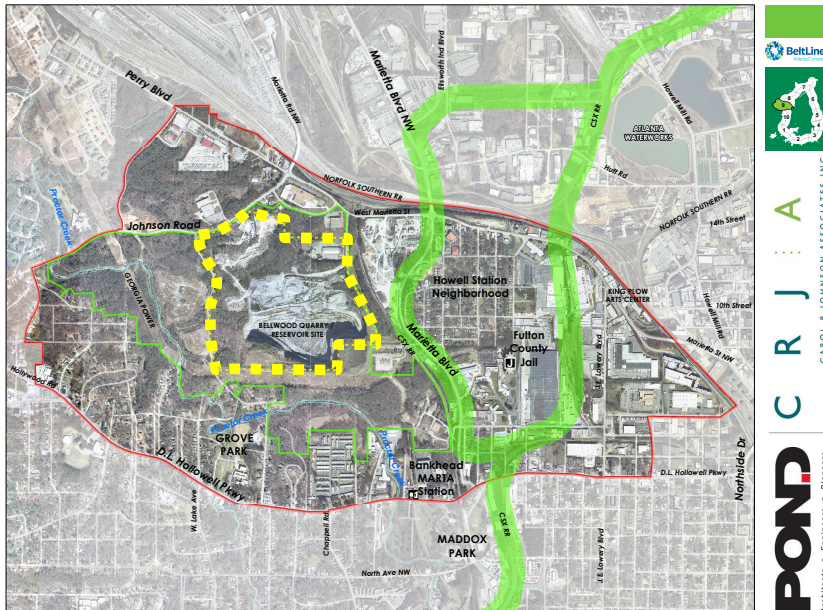


MASTER PLANNING UPDATE

Subarea 9



Subarea Highlights & Concerns



- Provide moderate to high density redevelopment at transit stations and existing major roads
- Safely connect neighborhoods to each other, parks and MARTA
- Support the development of affordable housing units near transit

MASTER PLANNING UPDATE

Subarea 9



Subarea Highlights & Concerns



- **Westside Reservoir Park; a citywide resource with passive and active recreation areas**
- **Frame new park with new compact residential and mixed use development**
- **Incorporate Proctor Creek into new park**
- **Plan for multimodal access to park**

MASTER PLANNING UPDATE

Next Steps



- **Complete Draft Master Plans**
- **Review Plans with Study Groups & Resource Teams**
- **Conduct Office Hours**
- **Finalize Master Plans**
- **Transmit to DPCD/City Council for Adoption**
- **Launch Remaining Subarea Master Plans**

ABI/MARTA to conduct an environmental study to finalize transit & trail routes:

- **Addresses environmental & community impacts of implementation**
- **Begins conceptual engineering of corridor**
- **Determines specific routes/rights-of-way to protect**
- **Preserves eligibility for state and/or federal funds**
- **Builds upon the MARTA recommendations**
- **Public involvement through citizen engagement framework**

OVERVIEW

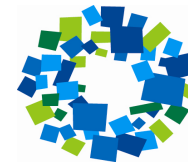


BELTLINE UPDATE

BELTLINE PARTNERSHIP UPDATE

MASTER PLANNING UPDATE

GENERAL Q & A



BeltLine
Atlanta Connected

Questions and Answers





Quarterly Briefing

April 17, 2008